

BAY AREA COMMUTER BENEFITS PROGRAM

David Burch, Principal Planner

Jackie Winkel, Environmental Planner

Bay Area Air Quality Management District

Christine Maley-Grubl, Project Manager

Metropolitan Transportation Commission



METROPOLITAN
TRANSPORTATION
COMMISSION



BAY AREA
AIR QUALITY
MANAGEMENT
DISTRICT

WEBCAST PARTICIPANTS

Email questions and comments to:

commuterbenefits@baaqmd.gov

BAY AREA COMMUTER BENEFIT PROGRAM

Program can **save \$\$** for:

- **your business**
- **your employees**

and

- Improve air quality
- Reduce GHG emissions
- Reduce traffic congestion

Employers: up to **\$225**/year per
employee

Employees: **\$1,176** or more per
year



BAY AREA COMMUTER BENEFITS PROGRAM

Who: Employers with 50+ full-time employees in Bay Area

Where: Throughout the nine-county SF Bay Area

What: Choose a commuter benefit option to offer employees

Why: To reduce air pollution
To reduce traffic congestion

How: Expand availability of federal commuter tax benefits

When: Spring of 2014

FOUR COMMUTER BENEFIT OPTIONS

- **Option 1:** Pre-tax payroll deduction for transit or vanpool
- **Option 2:** Direct subsidy for transit or vanpool
- **Option 3:** Employer-provided transportation
- **Option 4:** Alternative commuter benefit



PURPOSE OF WORKSHOPS

Explain the Commuter Benefits Program

Receive questions & comments

Solicit written comments on two documents:

- **Bay Area Commuter Benefits Program (Draft Regulation 14, Rule 1)**
- **Workshop Report**

Docs are posted:

www.baaqmd.gov/Divisions/Planning-and-Research/Commuter-Benefits-Program.aspx

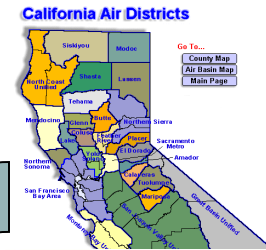
Written comments are due **November 7**

THE AIR DISTRICT & MTC

Bay Area Air Quality Management District (Air District):
Regional air quality agency



Metropolitan Transportation Commission (MTC):
Regional transportation planning agency

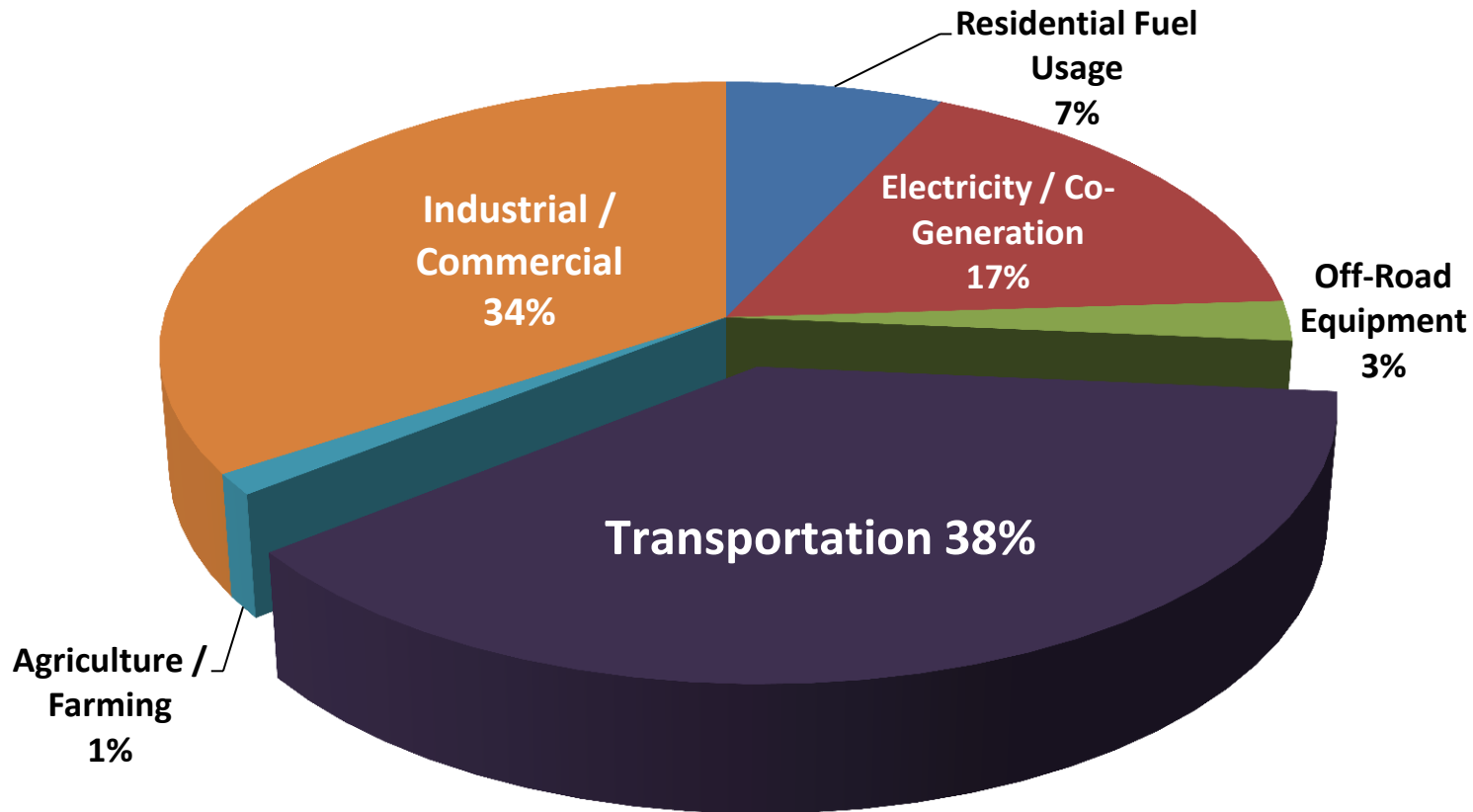


BACKGROUND & OVERVIEW

- Senate Bill 1339 signed by Governor in fall 2012
- Authorizes Air District & MTC to jointly adopt a regional commuter benefits ordinance
- Modeled on local ordinances in several Bay Area cities
- Program must be approved by Air District Board of Directors & MTC in order to take effect
- Pilot program: 2014-2016
- Report to Legislature due by July 2016

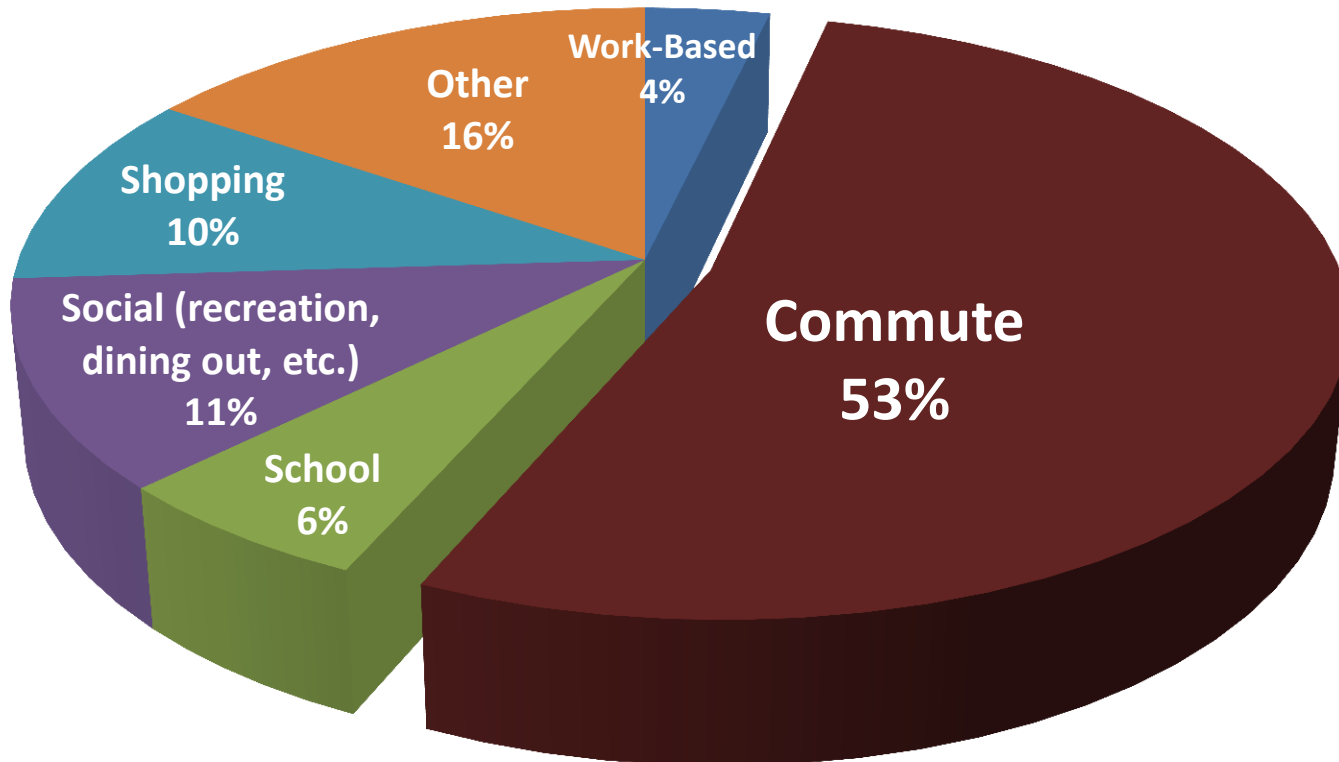
AIR POLLUTION FROM TRANSPORTATION SECTOR

Transportation is the largest source of greenhouse gas emissions in the Bay Area (2012)



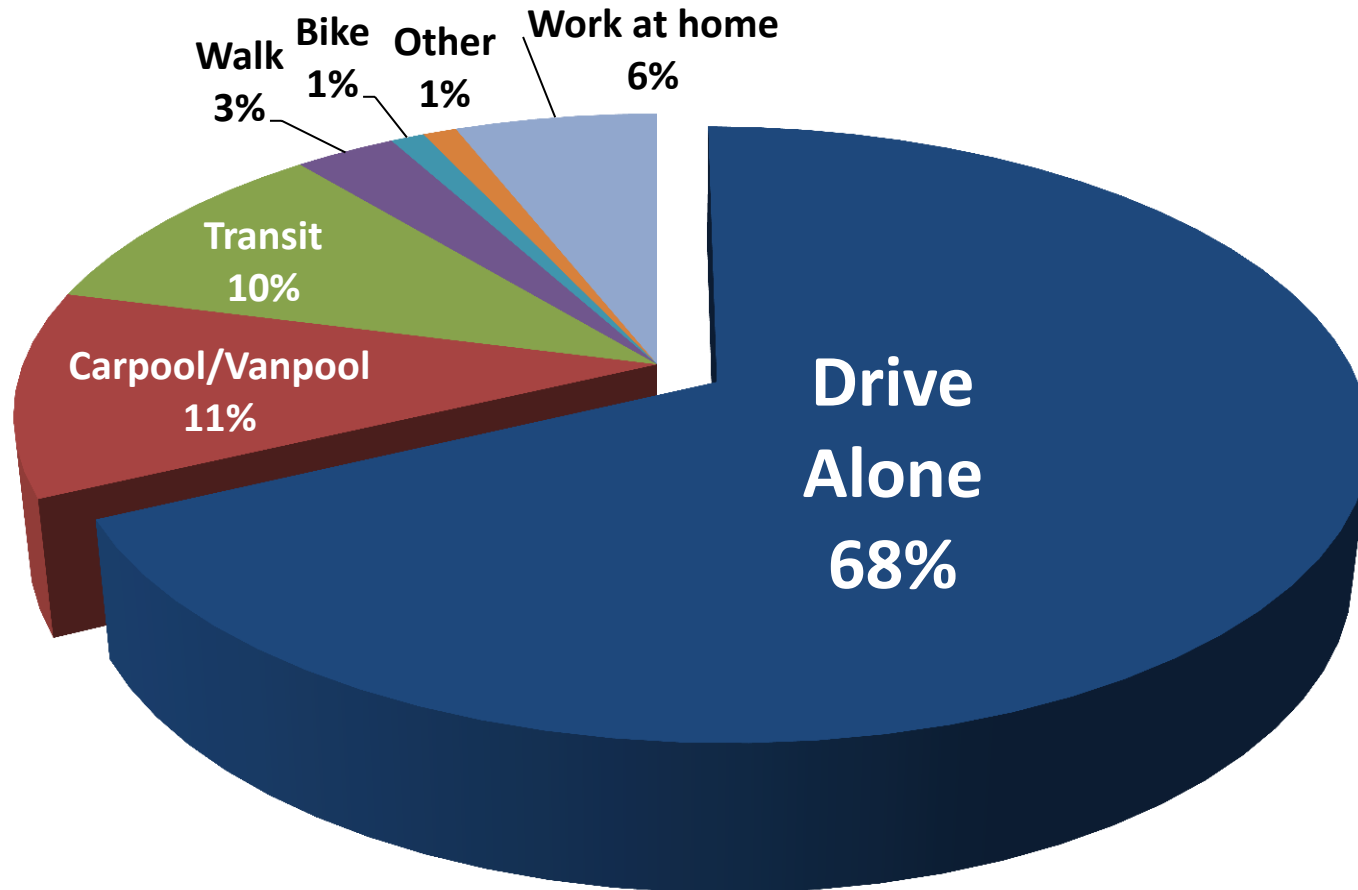
THE ROLE OF COMMUTE TRIPS

Weekday commute trips account for a major share of personal motor vehicle travel (2010)



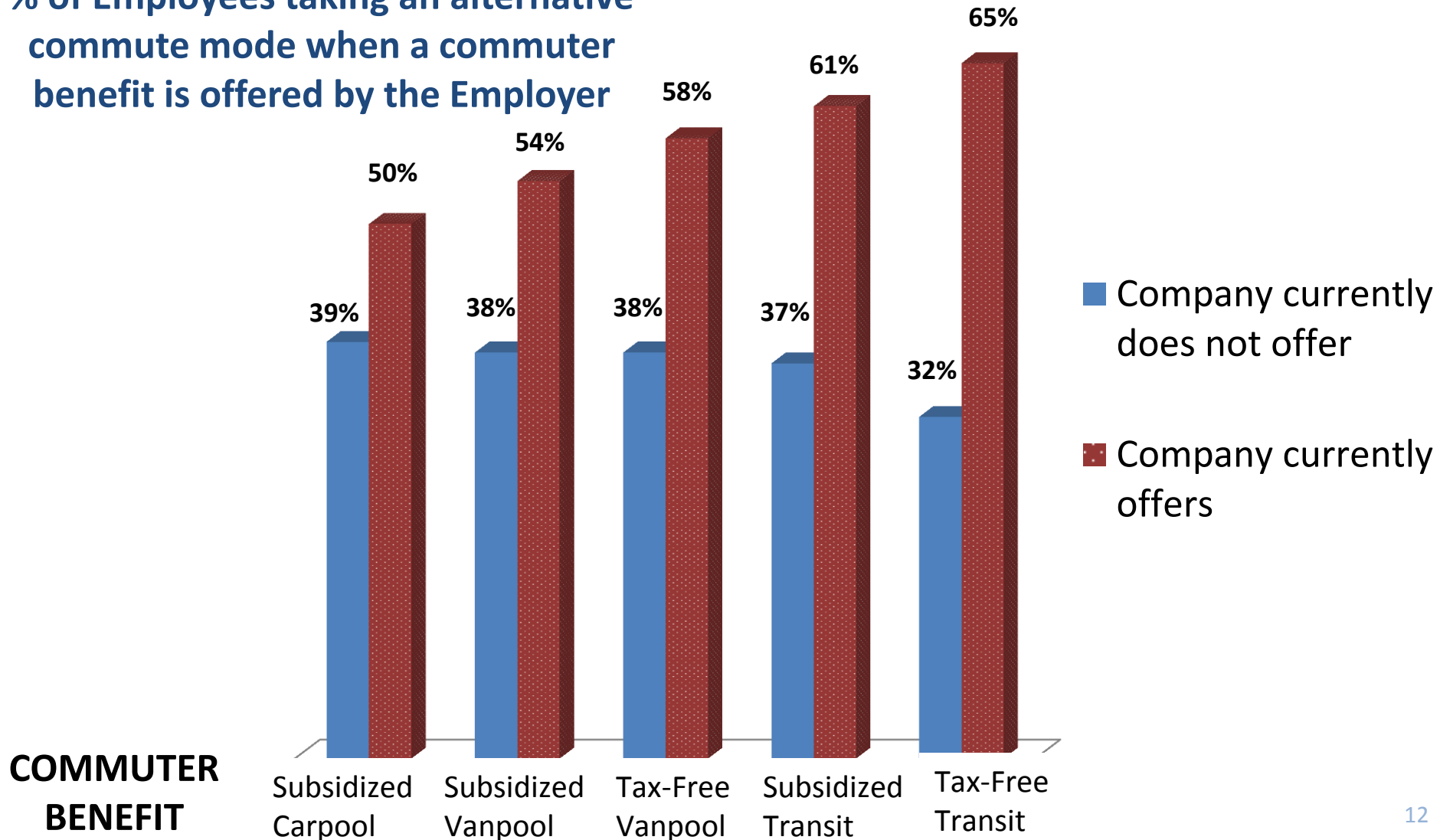
BAY AREA COMMUTE MODE SPLIT

Two-thirds of Bay Area commuters drive to work alone



EMPLOYERS CAN INFLUENCE MODE CHOICE

% of Employees taking an alternative commute mode when a commuter benefit is offered by the Employer



**COMMUTER
BENEFIT**

ROLE OF EMPLOYER

Offer commuter benefits to encourage employees to use alternative commute modes

Program will **not**:

- require employer to attain any target or standard
- require any employee to change commute mode

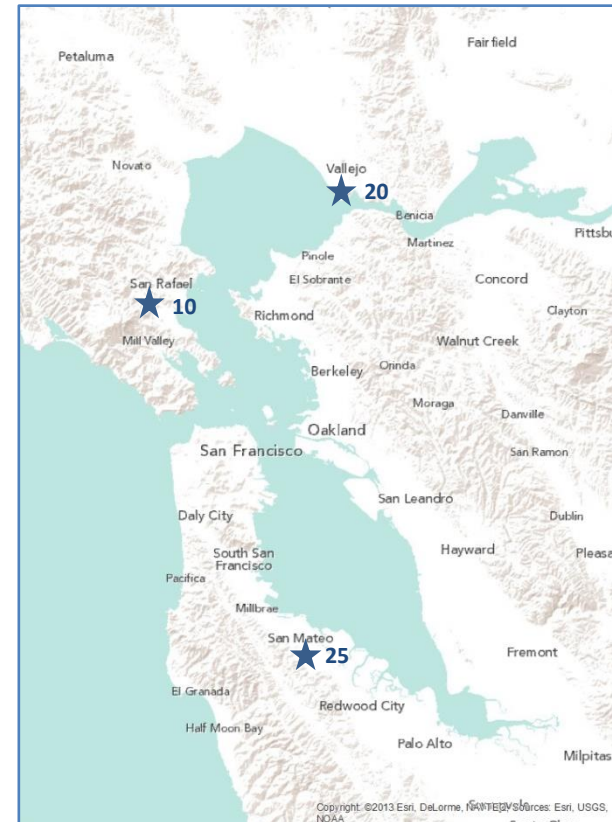
APPLICABILITY

Employers with 50+ full-time employees in Bay Area:

- Private business
- Public agency
- Non-profit organization

Employee count based on all Bay Area worksites combined

- Including branch locations with less than 50 employees



DEFINITION OF “EMPLOYEE”

Employee: Anyone who receives W-2 form for tax purposes

Full-time employee: works 30 hours or more per week

Seasonal/temporary employees are not included
(120 days per year or less)

Who is eligible to receive the commuter benefit?

- **Covered employees:** 20 hours or more per week

PROPOSED PROGRAM REQUIREMENTS

- Designate a commuter benefits coordinator
- Select one of the commute benefit options
- Register with the Program
- Notify employees
- Provide information needed for Program evaluation
- **Transportation Management Association** (TMA) can represent employer to comply with Program requirements

FOUR COMMUTER BENEFIT OPTIONS

- **Option 1:** Employer offers employees a pre-tax payroll deduction for transit or vanpool costs. Up to \$245/month per IRS code
- **Option 2:** Employer subsidizes transit or vanpool cost (up to \$75/employee/month max)
- **Option 3:** Employer provides free or low-cost bus, shuttle, or vanpool service for employees
- **Option 4:** Alternative commuter benefit

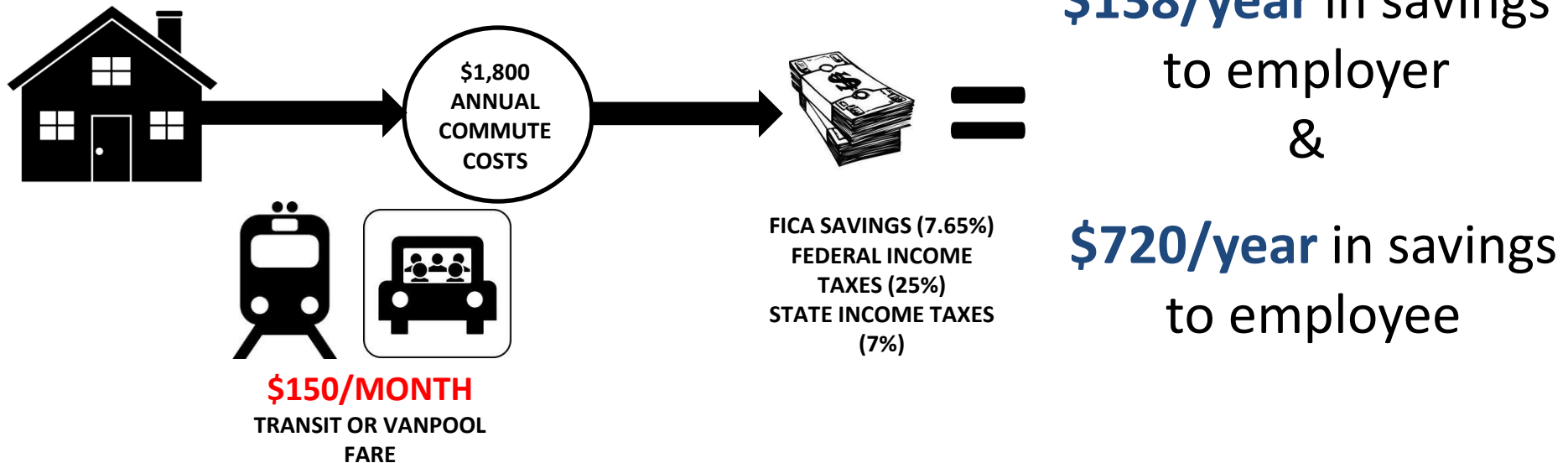


SAVINGS TO EMPLOYERS & EMPLOYEES

Option 1: By allowing use of pre-tax \$\$ for transit & vanpool

-Employers: can save **~8%** (or more) in payroll tax savings

-Employees: can save on average **40%** (or more) on their (after-tax) commute costs

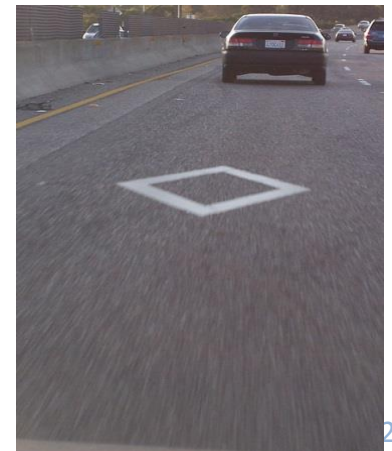


SAVINGS TO EMPLOYERS & EMPLOYEES

Option 1 (pre-tax \$\$)	Monthly Employee Cost of Transit / Vanpool Fare (in Pre-tax Dollars)		
	\$75	\$150	\$245
Savings to Employers (per Employee)	\$6 / month	\$ 12 / month	\$ 19 / month
FICA Tax (Social Security + Medicare) 7.65%	\$70 / year	\$140 / year	\$ 225 / year
Employee Savings	\$30 / month	\$60 / month	\$98 / month
Assumes 25% federal income tax, 7.35% State/local income tax, plus 7.65% employee share of FICA	\$360 / year	\$720 / year	\$1,176/ year

OPTION 4: ALTERNATIVE BENEFIT

- Employer may propose an alternative commuter benefit
- Must be as effective as Options 1, 2 & 3 in reducing drive-alone commute trips (or vehicle emissions)
- Promote alternative modes such as carpool, bike, walk
- Program will define “pre-approved” alternatives
- Employer can also propose its own alt commuter benefit
- Air District/MTC will evaluate and approve alternative commuter benefit proposals



POSITIVE OUTCOMES: ALL BAY AREA RESIDENTS

- Better air quality
- Reduced greenhouse gases
- Less traffic congestion
- Improved benefits help to recruit & retain employees
- Savings to employers & employees
- More \$\$ stay in the Bay Area: helps the local economy



Q & A

Questions & Comments

COMMUTER BENEFITS PROGRAM ELEMENTS

Program will be based on a new rule: Regulation 14, Rule 1

- Guidelines to explain Program options & requirements
- Employer assistance via MTC 511.org program
- On-line registration system



Objectives:

- Make it easy for employers to comply
- Minimize administrative requirements

EMPLOYER REGISTRATION PROCESS

The screenshot displays the 511 SF Bay website interface. At the top, there are navigation links for 511.ORG, TRANSIT, TRAFFIC, RIDE SHARE, BICYCLING, and PARKING. A 'MY 511' section includes 'Login' and 'Register' buttons. Below the navigation, there are several content blocks: a '511 RideMatch Service' section with a video player and 'New Users: Register' and 'Registered Users: Login' buttons; a 'Carpool to work and win tickets to a museum!' announcement; a 'Keep moving with FasTrak!' section; a '511 Parking' section with links for 'Get SF real-time info' and 'Find Bay Area info & savings'; and a 'Carpool Calculator' form with fields for 'Daily round-trip commute', 'Work days per month', 'Your car's MPG', 'Price you pay for gas', 'Daily bridge toll', 'Daily parking cost', and 'Maintenance cost / mile', along with a 'Calculate' button. A map of the Bay Area is visible on the left side of the page, showing various transit routes and toll bridges.

What?

- Easy access to secure, automated, online registration process

When?

- Employers have six months to complete process/implement program

How?

- Register online
- Offer your employees the benefit
- Report on benefit offered

ONLINE EMPLOYER ASSISTANCE

Online materials on 511.org will include:

- Guidance document
- Self-guided Tutorial
- Frequently Asked Questions
- Examples of Employer Commuter Benefit Programs
- Registration Form
- List of Commuter Benefit Providers



PERSONALIZED EMPLOYER ASSISTANCE



Local employer outreach staff are available to provide free assistance:

- **Alameda, Marin, Santa Clara, and Sonoma Counties** - 511 Regional Rideshare Program
- **Contra Costa County** – 511 Contra Costa
- **San Mateo County** - Peninsula Traffic Congestion Relief Alliance
- **San Francisco County** - San Francisco Department of the Environment
- **Solano and Napa County** - Solano/Napa Commuter Information

Contact information for all of the above available at:

<http://rideshare.511.org/employers/contact.aspx>

PART 3: PROCESS & TIMELINE

Task / Milestone	Draft Time Frame
Seek initial input from employers & stakeholders	March → July 2013
Conduct workshops on draft proposal	October 2013
Consider comments. Prepare proposed Program: <ul style="list-style-type: none">- Proposed rule & staff report- CEQA analysis- Socio-Economic Analysis	November – December 2013
Public Hearing to approve Program <ul style="list-style-type: none">- Adoption by Air District Board- Concurrence by MTC Commission	February 2014
Employers will have 6 months to implement program	March – August 2014

FOR MORE INFORMATION

- www.BAAQMD.gov/commuterbenefits
- www.sparetheair.org
- www.511.org
- **To submit comments via email:**
commuterbenefits@BAAQMD.gov
- **To submit comments via US mail by November 7:**
David Burch
BAAQMD
939 Ellis St.
San Francisco, CA 94109



End of Presentation

Questions & Comments