

Clean Air Strategies: Working Together for Public Health, Environmental Protection, and Smart Growth



Laurel Prevetti, Assistant Planning Director

September 23, 2009

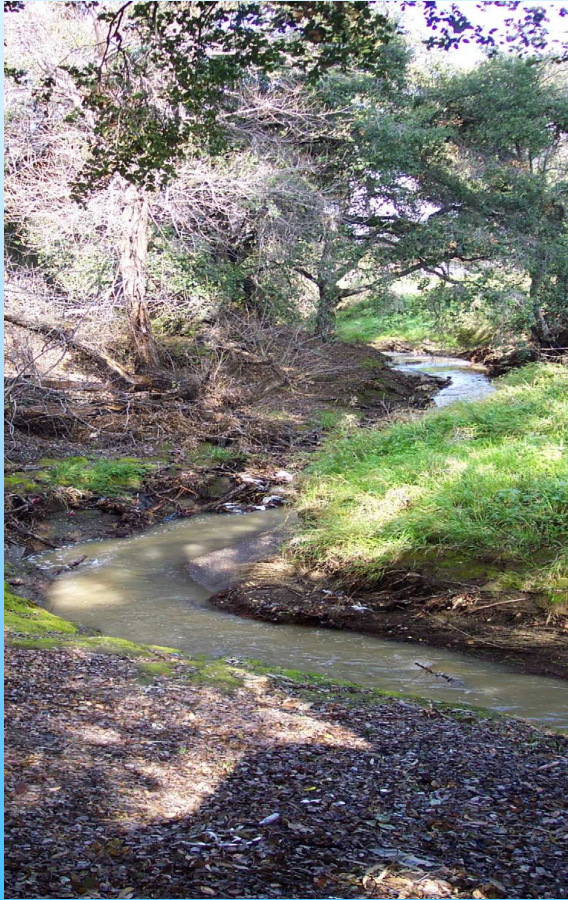
City Building Context



San Jose is creating its **Blueprint for the Future** to become a great city to live, work, play, learn, and visit



Protecting Natural Assets

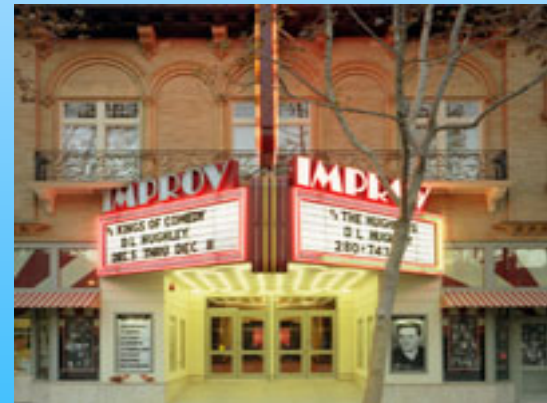


Fostering Economic Development



While Santa Clara County has more jobs than housing; **San Jose** is working to change its role from a bedroom community to a **balanced community**.

Revitalizing Downtown



Preserving the City's Heritage



Facilitating a Choice of Housing



Leading in Environmental Sustainability



Green Vision Goals

1. Create 25,000 Clean Tech jobs
2. Reduce per capita energy use by 50%
3. Receive 100% of our electrical power from clean renewable sources
4. Build/retrofit 50 million sf of green buildings
5. Divert 100% of the waste from our landfill & convert waste to energy
6. Recycle/reuse 100% of wastewater
7. Adopt a General Plan with measurable standards for sustainable development
8. Ensure that 100% of public fleet vehicles run on alternative fuels
9. Plant 100,000 new trees & replace 100% of streetlights with smart, zero-emission lighting
10. Create 100 miles of interconnected trails



Population vs. Land Area (2020)

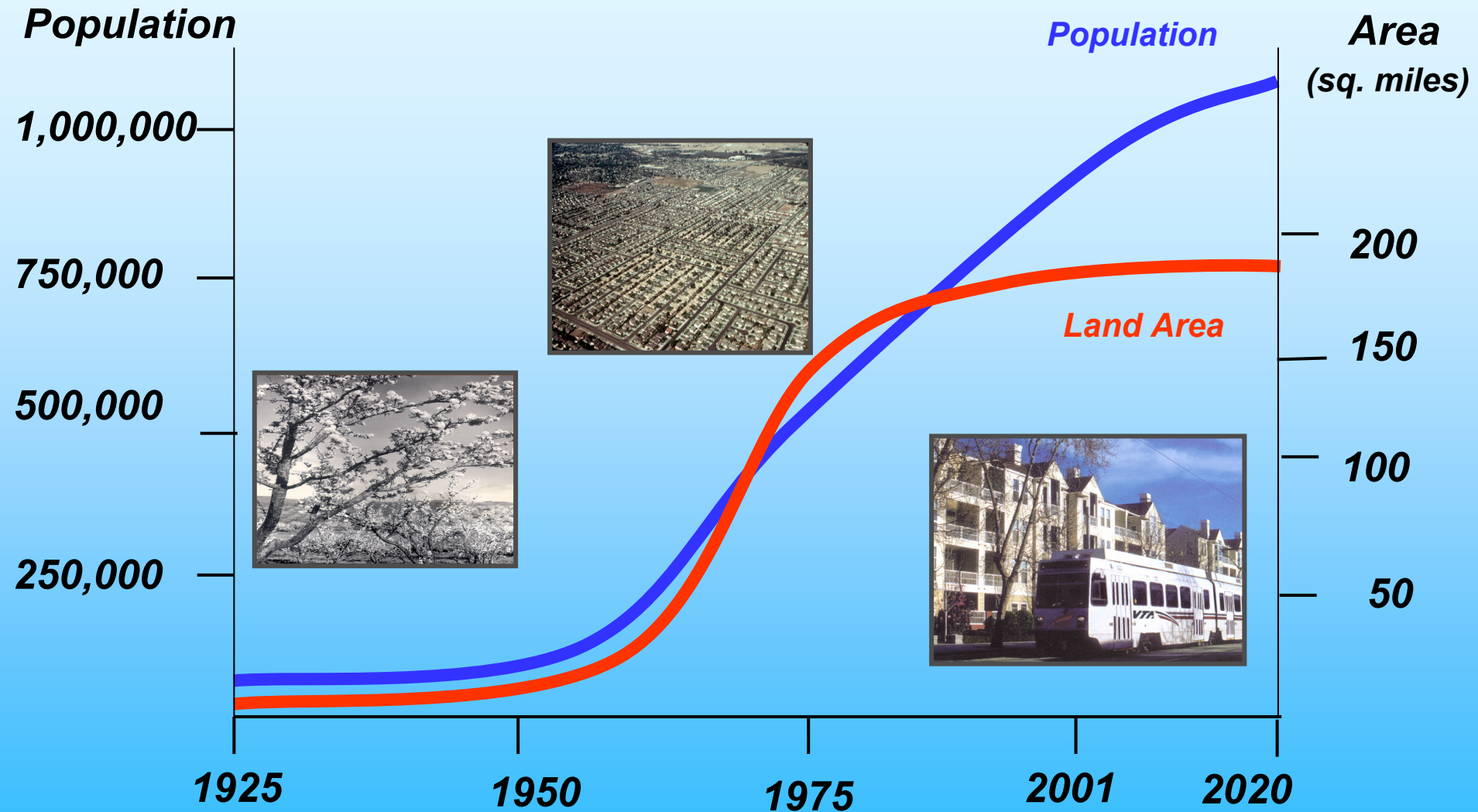
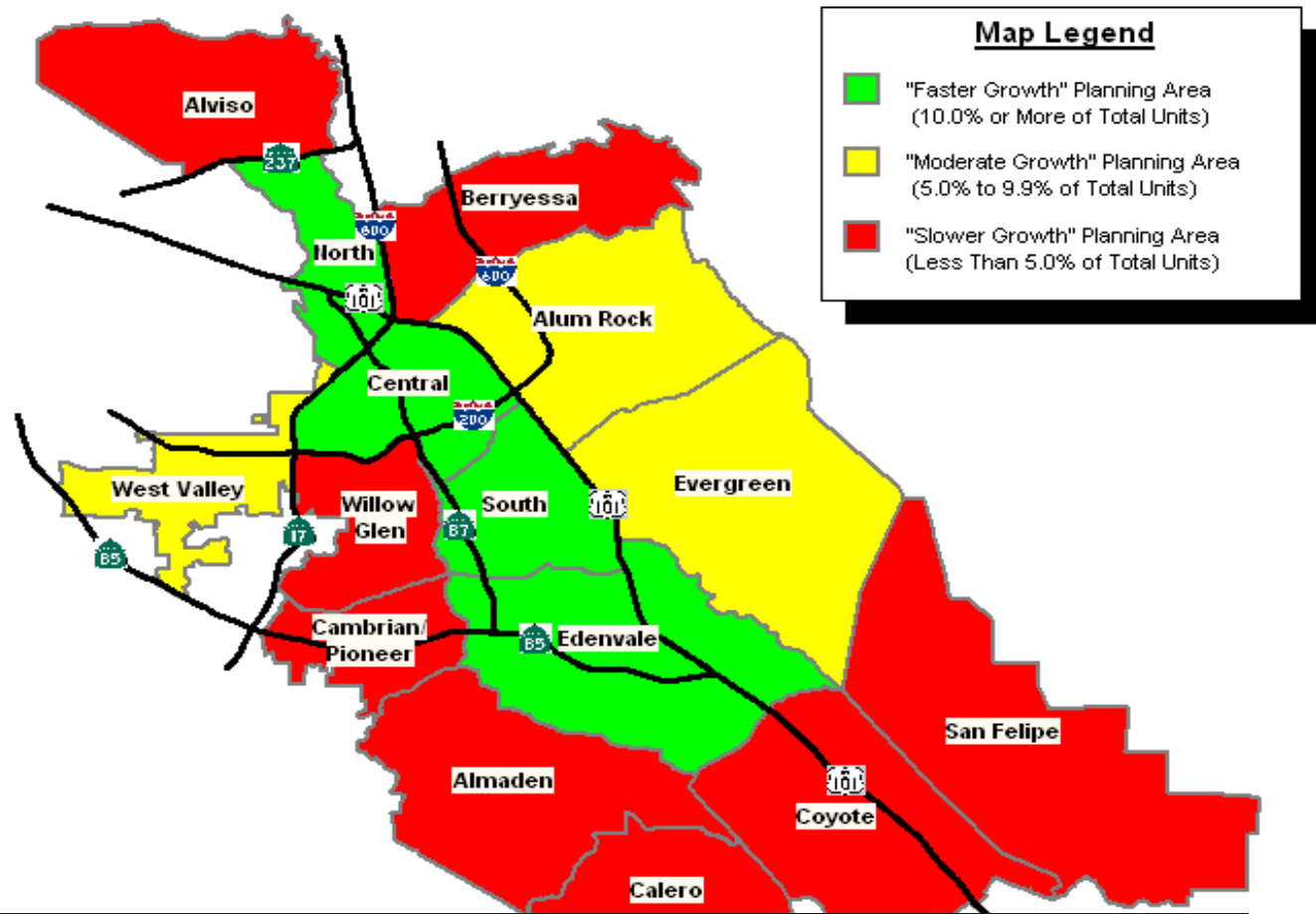


Figure 1.
New Housing Units by Planning Area, Since Census 2000

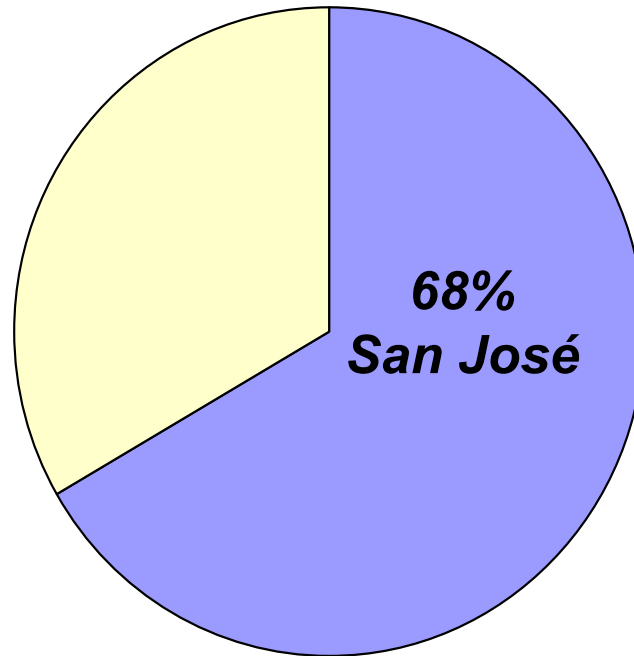


San Jose has a certified Housing Element, planning for its Regional Housing Needs of 35,000 new housing units.

Projected Population Growth (2040)

693,000 new residents in
Santa Clara County

471,000 in
San José



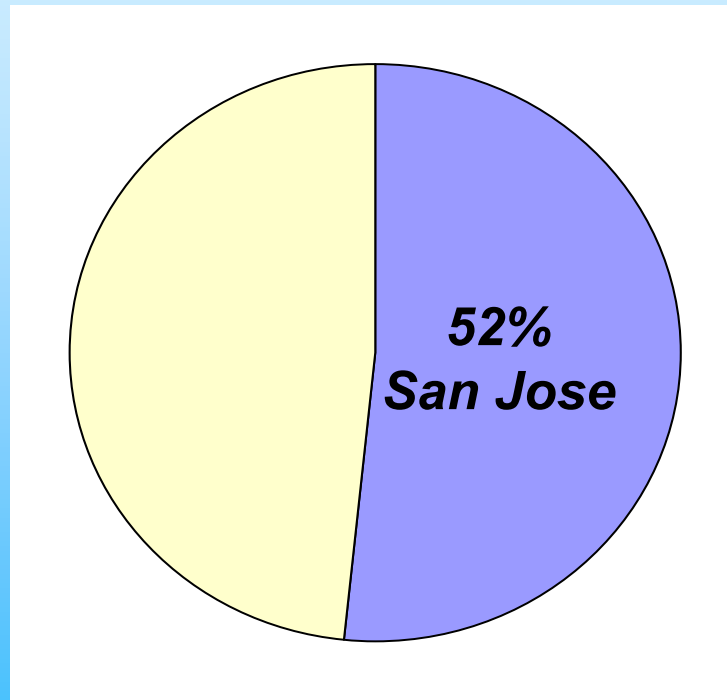
222,000 in rest of
County (32%)



Projected Job Growth (2040)

329,000 new jobs in
Santa Clara County

172,000 in
San José



Diversity and Social Equity

San Jose celebrates, embraces and involves a diverse blend of cultures and achieves social, cultural and economic equity.



Innovative Economy

San Jose's economy thrives on innovation, providing job opportunities for all and ample fiscal resources for a vibrant community.



Environmental Leadership

San Jose is a model of an environmentally sustainable and healthy city, a leader in green technology and a vigilant steward of its resources for present and future generations.



San Jose embodies the energy and vitality of its unique human, natural and economic resources.



Interconnected City

The activities of daily life are in close proximity and easily accessible by walking, bicycling and public transit.

Healthy Neighborhoods

San Jose's neighborhoods are attractive, affordable, and safe places to live with engaged community members.



Quality Education and Services

San Jose residents and businesses receive a broad range of high quality services and enjoy excellent educational opportunities for all.



Vibrant Arts and Culture

San Jose is a vibrant center for multi-faceted arts and cultural programs, celebrating its heritage and inspiring the creative energy of the community and a rich quality of life.



ENVISION SAN JOSE 2040

Transit System

Proposed for Completion by 2020



Regional Policies Should Support a Vital Community



Policy Principles for Consideration

1. Address public health, social equity and environmental justice issues fairly.
2. Ensure a consistent regulatory framework throughout the region (and State for GHG).
3. Create and enforce policy that gets to the root of the problems (e.g., mobile sources).
4. Invest in technologies/companies that are innovating clean fuels for trucks.
5. Promote policies that accommodate the Bay Area's future growth in ways that reduce vehicle miles traveled per capita, increase non-auto mode share for commute travel, and reduce GHG emissions from transportation.
6. Reward cities that are retrofitting auto-oriented suburbs to mixed use villages that foster walking, bicycling, and transit use by locating new jobs and housing within ½ mile of transit.
7. Foster economic development and job creation for all economic segments, including goods movement.

Initial Comments on BAAQMD's Draft Air Quality Guidelines

1. Acknowledge Lead Agencies use of Tiering to address cumulative impacts analyzed in Program Environmental Impact Reports.
2. Use the California Air Resources Board GHG thresholds (to be established in 2010) rather than creating multiple thresholds.
3. Create the ability to refine Special Overlay Zones for roadways to reflect actual conditions and the presence of toxic air contaminants.