



Bay Area Air Quality Management District

Draft Community Risk Reduction Plan Guidelines

CARE Task Force Meeting

May 19, 2010

Phil Martien, Ph.D.
Bay Area Air Quality Management District

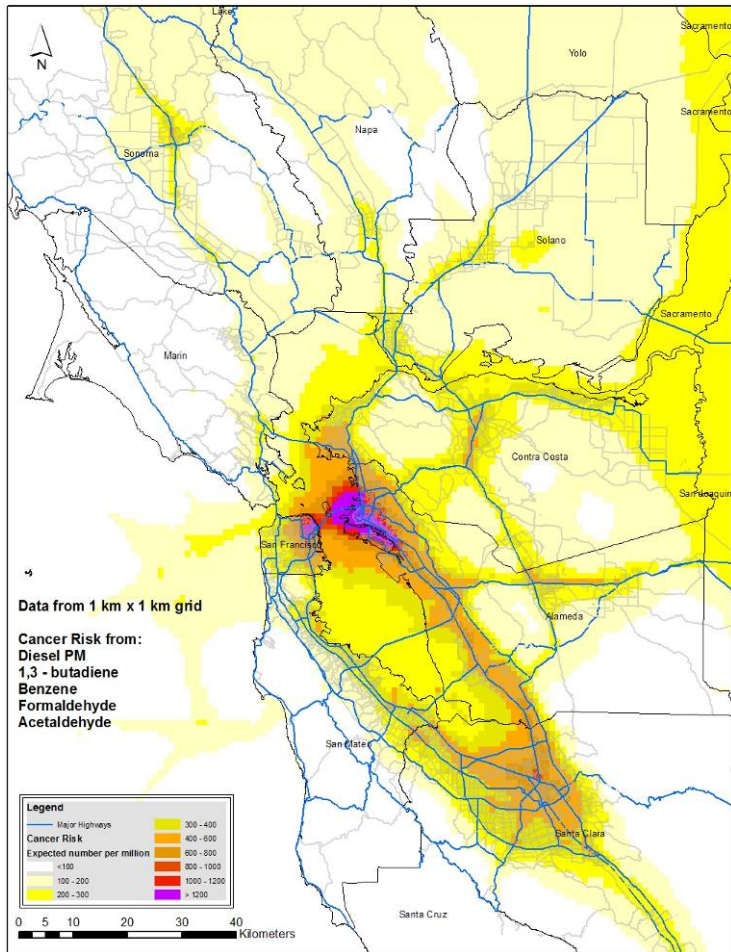


Purpose of Community Risk Reduction Plans

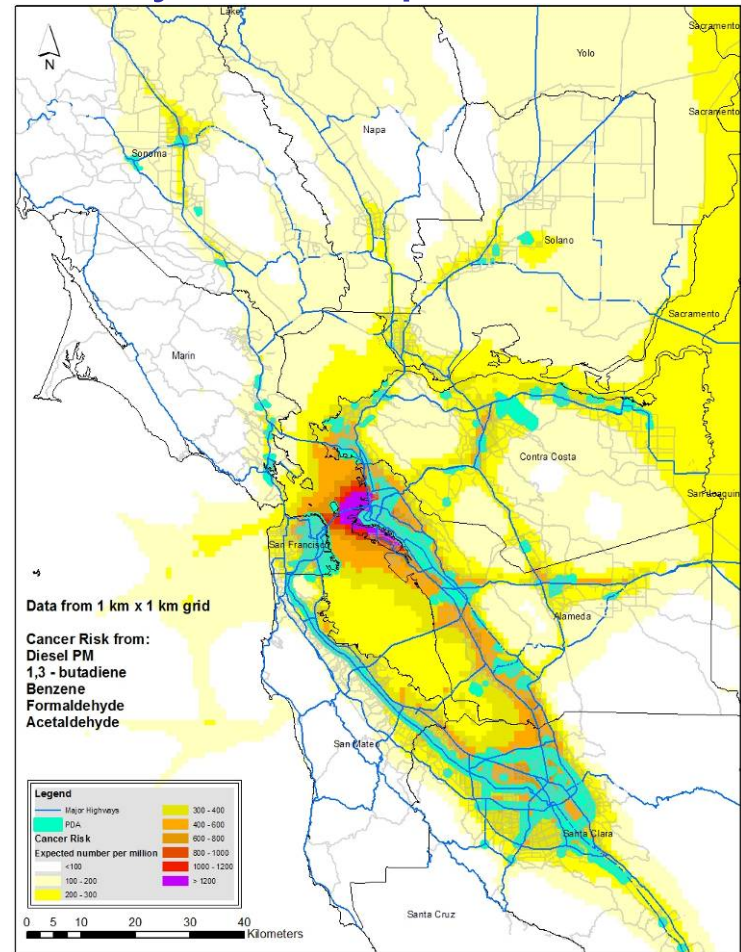
- Promote strategies that support livable communities
 - Support mixed-use, infill, transit-oriented development
- Support community wide planning approach to reduce cumulative impacts
- Streamline CEQA review for projects consistent with plan
- Invite public participation in setting goals for the community
- Collaborative effort between local governments and Air District

Priority Development Areas and Air Toxics

Modeled Air Toxics Risk



Priority Development Areas





Community Risk Reduction Plan Elements

1. Define Planning Area
2. Develop Local-scale Emission Inventory
3. Develop Local-scale Risk/Hazards Modeling
4. Set Goal or Reduction Target
5. Establish Emission Reductions and Other Mitigation Measures
6. Set Monitoring and Updating Mechanism
7. Involve Public and follow CEQA Process

A photograph of the San Francisco skyline at night, with the city lights reflecting on the water. The Golden Gate Bridge is visible on the left, and the city skyline extends to the right. The text "Progress on Community Risk Reduction Plans" is overlaid on the right side of the image.

Progress on Community Risk Reduction Plans

- Report at Air District Board retreat February 2010
- Discuss with CARE Task Force Feb. 11
- Developed draft Guidelines for CRRP elements
 - Posted May 3
 - Review with regional agencies
- Contract for local emission inventories – to Air District Executive Committee May 24
- Initiate pilot projects with San Jose, San Francisco
- Air District has budgeted funds for local government assistance with CRRPs
- Extensive case studies
- Developed technical support tools



Proposed Community Risk Reduction Plan Elements

1. Define Plan Area – Options
 - City boundary or sub-area
 - Initial focus on cities with impacted areas identified through CARE program
2. Develop Local-scale Emissions Inventory
 - Base year: 2010
 - Future year: 2020
 - Sources to consider:
 - Permitted sources
 - Freeways and major roadways
 - Significant non-permitted sources, develop protocol for identifying
 - Major contract pending to help develop this



Proposed Community Risk Reduction Plan Elements

3. Develop Local-scale Risk/Hazards Modeling

- Model each source within the plan area individually
- Add individual risks/concentrations to find cumulative effects

4. Set Goal or Reduction Target – Options

- Set target based on cumulative risk – all sources in planning area
 - a) No net increase/net reduction
 - b) Percent reduction from baseline conditions
 - c) Equivalent to regional average risk
 - How to relate to CEQA thresholds?
- Set target based on incremental risk – sources within 1,000 feet of a development-sized sub-area
 - Consider many such sub-areas
 - Targets could be related to CEQA thresholds
 - For example, current/future residential areas meet CEQA thresholds



Proposed Community Risk Reduction Plan Elements

5. Identify and Implement Emission Reductions and Other Mitigation Measures

- What emission reductions are needed to achieve goals?
- What other kinds of mitigations are recommended?
 - Land use zoning
 - Buffer zones and setbacks
 - Alternative vehicle routing and compliance with idling regulation
 - Grant incentives to reduce emissions from specific sources
 - Local requirements to exceed state, federal requirements
 - Alternative fuels
 - Project phasing
 - Filter indoor air



Proposed Community Risk Reduction Plan Elements

6. Set Monitoring and Updating Mechanism
 - Local jurisdictions responsible for the enforcement of the plan
 - District will monitor implementation of plan
 - Periodic updates to the inventory
 - Revisions to the sub-areas considered
 - Updated modeling

7. Involve Public and follow CEQA Process
 - Facilitated by the local jurisdiction
 - District to assist/partner with local jurisdiction
 - CEQA review of plan needed to allow tiering