

# *Community Risk Reduction Plan Protecting Community Health*

---

Thomas Rivard  
Health Hazard Analysis Group  
SFDPH





# Status San Francisco CRRP

---

- Cumulative Concentration Models for PM 2.5, TOG, and DPM complete
- Point Source model for DPM and Benzene complete. New database expected by summer.
- Citywide Mortality associated with PM 2.5 will be determined by July 2011.
- Exposure inequities based upon income will be evaluated by July 2011.

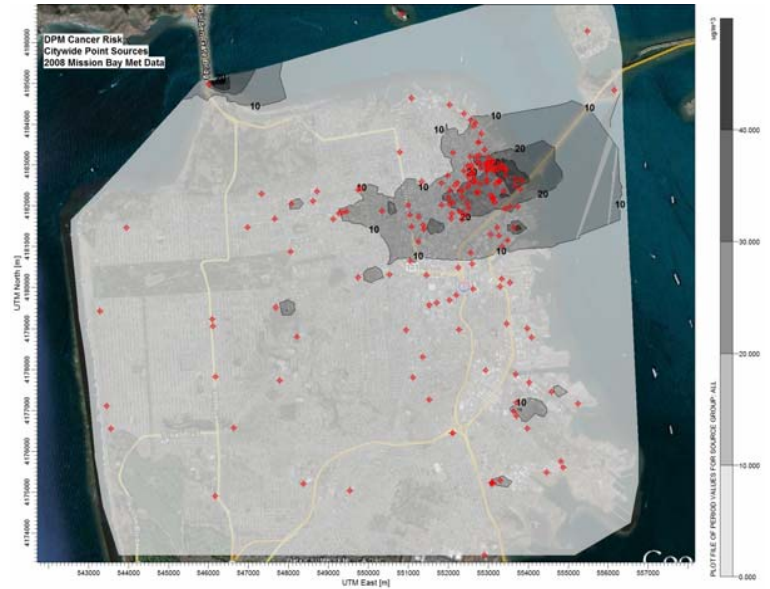
# Roadway Cumulative PM 2.5

(plus 6.97 ug/m<sup>3</sup> background) State Standard: 12 ug/m<sup>3</sup>

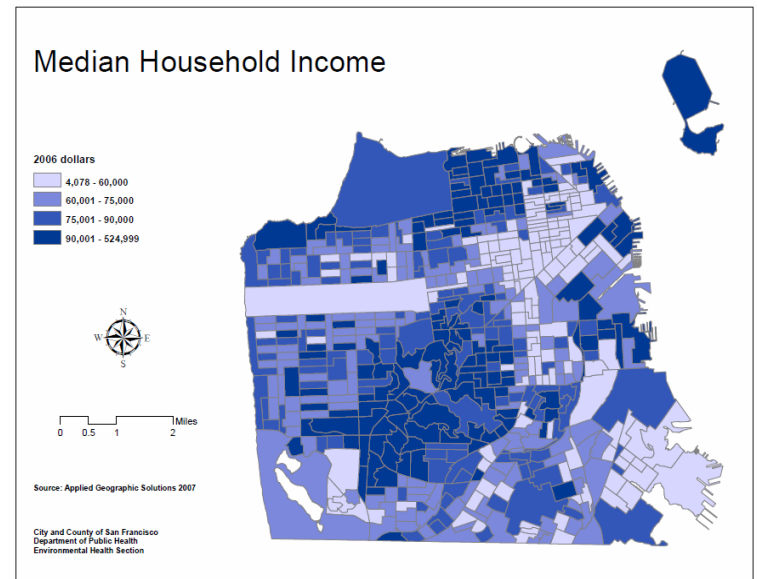


# Roadway and Point Source DPM Cancer Risk

per million population



# Exposures and Health Impacts to be related to economic vulnerability





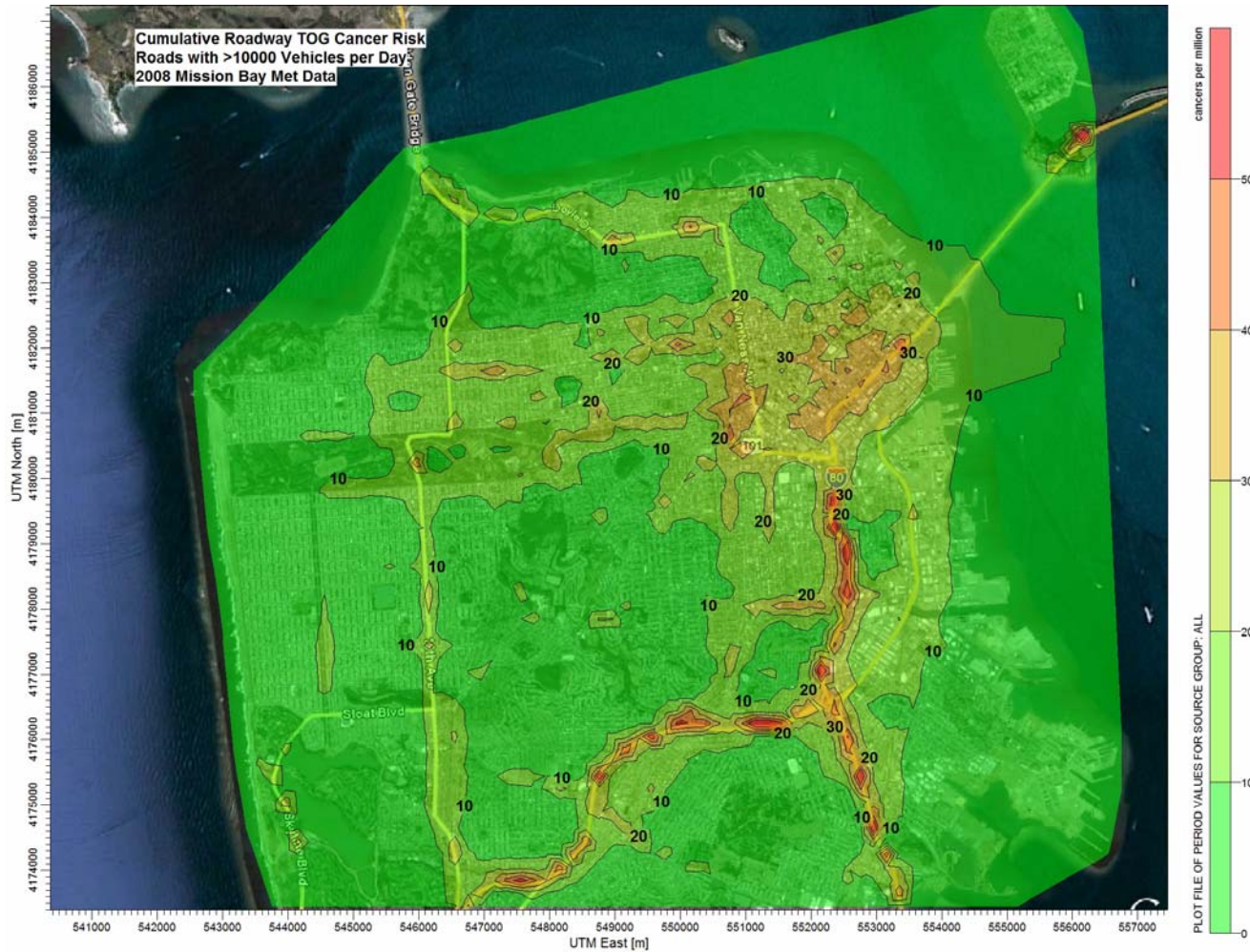
# CRRP Strategies

---

- Cumulative PM 2.5 to be evaluated relative to State 12 ug/m<sup>3</sup> standard
- Cumulative Cancer risk to be evaluated relative to background risk plus 100 per million.
- Filtration to be considered a mitigation for new and existing receptor mitigation.
- All new development funds mitigations for existing residents because it adds traffic sources.
- Stakeholders to prioritize mitigation methods.

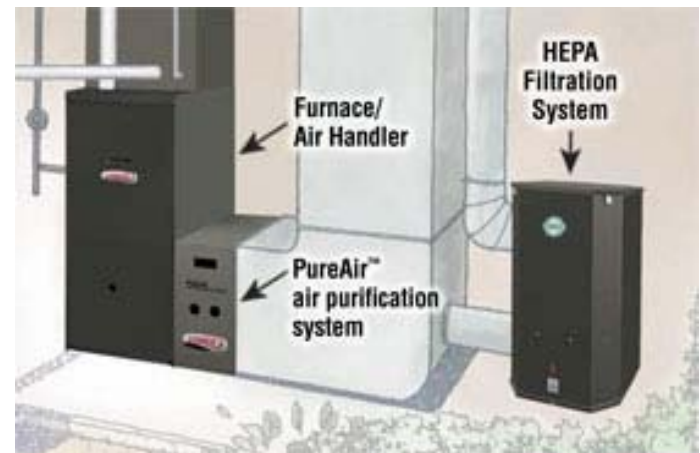
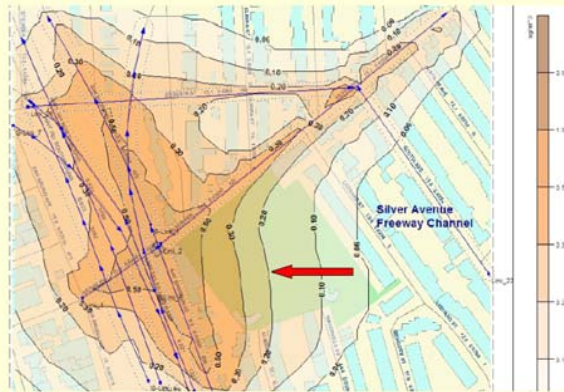
# Roadway Cancer TOG Risk

per million population



# Mitigation: Focused Analysis to Identify High Risk Existing Residences for Filtration

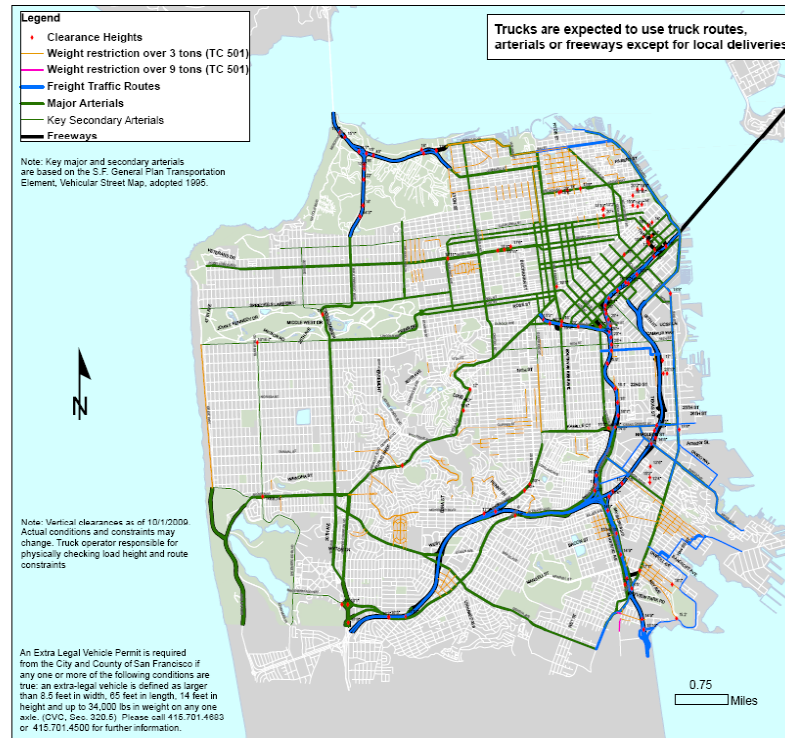
Traffic-related Air Pollution (PM 2.5) - Silver Ave.





# Mitigation: Truck Route Identification, Education, and Enforcement

## San Francisco Truck Traffic Routes

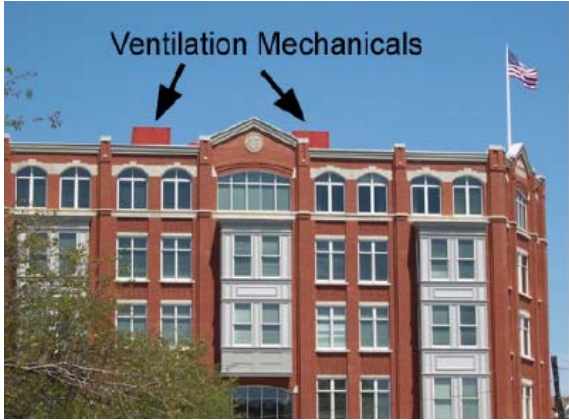
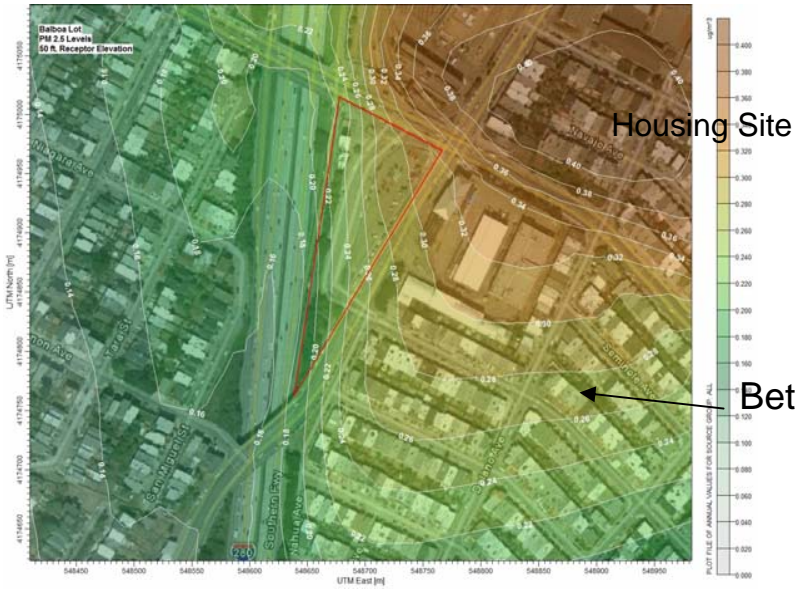


**SFMTA** | Municipal Transportation Agency

The City and County of San Francisco does not guarantee the accuracy or completeness of any information in this map. Call 415.701.4500 for comments, questions or suggestions.

San Francisco  
Jan. 28, 2010

# Mitigation: Elevating Air Intakes for New Construction

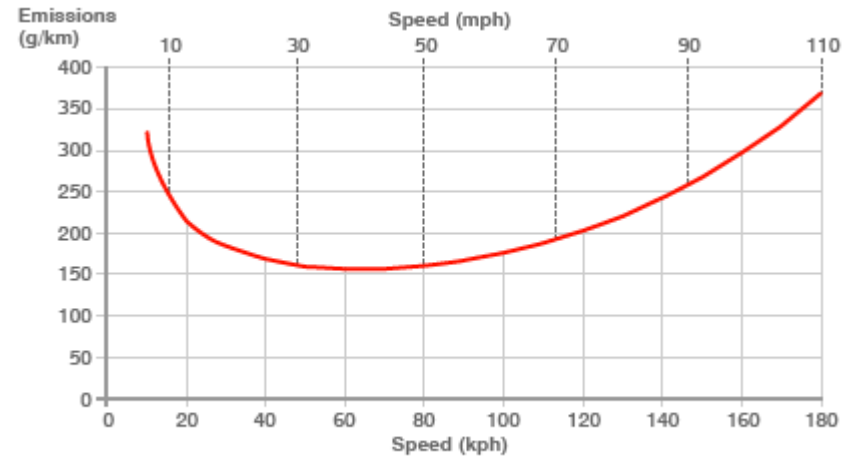


Better Air Quality @ 50 feet

# Mitigation: 50 mph Speed Limit Enforcement on Hi.101



**HOW CARBON EMISSIONS VARY WITH SPEED**



Figures based on 1.4-2.0 litre sized engine  
Some newer engines may be more efficient

SOURCE: NAEI

# Mitigation: Sound Walls and Highway Greening

---

