

December 30, 2022
File No. 01202092.00, Task 8

Mr. Jeffrey Gove
Director of Compliance and Enforcement
Bay Area Air Quality Management District
375 Beale Street, Suite 600
San Francisco, California 94105

TV Tracking #: 623

1. RECEIVED IN ENFORCEMENT: 12/30/2022

**Subject: SEMI-ANNUAL BAAQMD RULE 8-34/NSPS/NESHAP AND TITLE V REPORTS
SHORELINE AMPHITHEATRE, MOUNTAIN VIEW, CA (FACILITY NO. A2561)**

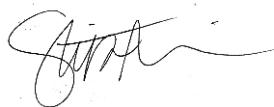
Dear Mr. Gove:

On behalf of the Shoreline Amphitheatre, SCS Engineers (SCS) is submitting the Bay Area Air Quality Management District (BAAQMD) Rule 8-34/New Source Performance Standards (NSPS) Semi-Annual and Title V Semi-Annual Reports for the Shoreline Amphitheatre (Shoreline), Mountain View, California.

The enclosed documents satisfy the reporting requirements of Title 40 of the Code of Federal Regulations (CFR), Part 63, Subpart AAAA (National Emissions Standards for Hazardous Air Pollutants [NESHAPs] for Landfills) and 40 CFR Part 60, Subpart WWW (New Source Performance Standards [NSPS]), including sections 40 CFR 60.757(f) and 40 CFR 62.16724(f), which describe the items to be submitted in semi-annual reports for landfills seeking to comply with NSPS using an active collection system. The reports also satisfy BAAQMD requirements under Rule 8-34 and the facility's Title V permit. The semi-annual reports cover the period of June 1, 2022 through November 30, 2022.

Please contact Melissa St. John at (916) 406-5476 or mstjohn@scsengineers.com if you have any questions or require any additional information.

Sincerely,



Stipe Markotic
Associate Professional
SCS ENGINEERS



Melissa St John
Project Manager
SCS ENGINEERS

cc: Jessica Hill, Shoreline Amphitheatre
Administrator, Air Division U.S. EPA Region IX
Pat Sullivan, SCS Engineers
Art Jones, SCS Field Services

Enclosures: NSPS/NESHAP/BAAQMD Rule 8-34 Semi-Annual Report
Semi-Annual Title V Report of Required Monitoring (with Certification)



NSPS/NESHAP/BAAQMD Rule 8-34 Semi-Annual Report

June 1, 2022 through November 30, 2022

Shoreline Amphitheatre

Mountain View, California (Facility No. A2561)

Prepared for:

Shoreline Amphitheatre
1 Amphitheatre Parkway
Mountain View, CA 94043

For Submittal to:

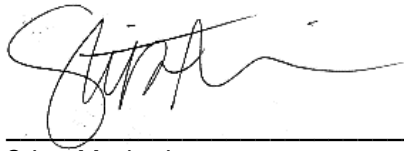
Bay Area Air Quality Management District
375 Beale Street, Suite 600
San Francisco, CA 94105

SCS ENGINEERS

01202092.00, Task 8 | December 30, 2022

3900 Kilroy Airport Way, Suite 100
Long Beach, CA 90806
562-426-9544


This New Source Performance Standards (NSPS)/National Emission Standard for Hazardous Air Pollutants (NESHAP)/Bay Area Air Quality Management District (BAAQMD) Rule 8-34 Semi-Annual Report for the Shoreline Amphitheatre in Mountain View, California, dated December 2022, was prepared and reviewed by the following:



Stipe Markotic
Associate Professional
SCS ENGINEERS



Melissa St. John
Project Manager
SCS ENGINEERS



Patrick S. Sullivan, REPA, CPP, BCES
Senior Vice President
SCS ENGINEERS

Table of Contents

Section	Page
1.0 Introduction	1
2.0 Site Background Information.....	2
2.1 Existing Landfill Gas Control System.....	2
3.0 Monitoring and Records	2
3.1 Continuously Monitored Parameters	2
3.1.1 Gas Extraction System Downtime	3
3.1.2 Emission Control System Downtime	3
3.1.3 Individual Well Downtime.....	3
3.1.4 Minimum Flare Temperature	3
3.2 Component Leak Quarterly Monitoring.....	3
3.2.1 Third Quarter 2022 Monitoring	3
3.2.2 Fourth Quarter 2022 Monitoring.....	3
3.3 Control Efficiency.....	4
3.4 Landfill Surface Monitoring.....	4
3.4.1 Annual 2022 Monitoring.....	4
3.5 Gas Collection System Installations and Upgrades.....	4
3.6 Well Field Monthly Monitoring	4
3.6.1 Pressure.....	5
3.6.2 Oxygen.....	5
3.6.3 Temperature	5
3.6.4 Monthly Methane and Flow Readings (Test Port)	5
3.7 Cover Integrity Monitoring.....	6
3.8 Gas Generation Estimate.....	6
3.9 Annual Waste Acceptance Rate and Refuse in Place	6
3.9.1 Non-Degradable Waste Areas.....	6
3.10 GCCS Downtime	6

Tables

Table 1 – Monthly CH₄ and Flow Readings (Test Port)

Appendices

Appendix A – Drawing of LFG Collection and Control System

Appendix B – Quarterly Component Leak Monitoring Results

Appendix C – Annual Surface Emissions Monitoring Results

Appendix D – Well Monitoring Data

Appendix E – Projected LFG and NMOC Generation Rate – Mountain View (Vista)

1.0 INTRODUCTION

On behalf of Live Nation and the Shoreline Amphitheatre (Shoreline or Landfill), SCS Engineers (SCS) submits this New Source Performance Standards (NSPS), National Emission Standards for Hazardous Air Pollutants (NESHAP), and Bay Area Air Quality Management District (BAAQMD) Rule 8-34 Semi-Annual Report to the BAAQMD. This Semi-Annual Report pertains to the landfill gas (LFG) collection and control system (GCCS) operated at Shoreline and covers the period of June 1, 2022 through November 30, 2022.

Please note that as of June 21, 2021, the facility became subject to and complied with the new Emission Guidelines (EG) requirements in California. The approved state plan for the EG includes compliance with Title 17 California Code of Regulations (CCR) Sections 95460 to 95476, known as AB 32 Landfill Methane Rule (LMR) and specific portions of 40 CFR Part 62 Subpart 000. This Semi-Annual report also meets the requirements of the revised federal National Emissions Standards for Hazardous Air Pollutants (NESHAP) 40 CFR Part 63, Subpart AAAA rule for MSW landfills, 40 CFR 63, Subpart AAAA, including provisions which went into effect on September 27, 2021, and complies with the requirements specified in Shoreline's Title V permit and BAAQMD Rule 8-34 which contains some NSPS Subpart WWW requirements. As of September 27, 2021, Shoreline has chosen to comply with the revised NESHAP rule for the equivalent compliance provisions of the Subpart 000 provisions in the California EG Rule. Shoreline will continue to report on outdated NSPS/NESHAP requirements as long as they remain in the Title V permit.

This report includes the following information, as required by BAAQMD Rule 8-34-411 and 40 CFR 63, Subpart AAAA:

- Continuous temperature monitoring and dates of any excesses (8-34-501.3, 507 and 63.1958(e)(f))
- Testing performed to satisfy of the requirements of this Rule (8-34-501.4)
- Monthly LFG flow rates and excesses (8-34-501.5 and 63.1958(e)(f))
- Collection and emission control system leak testing and any excesses, action taken to correct excesses, and re-monitored concentrations (8-34-501.6, 503 and 63.1958(d)(2))
- Landfill surface monitoring, location of excesses, excess concentration, date discovered, actions taken to repair the excess, and re-monitored concentrations (8-34-501.6, 506 and 63.1961(f))
- Annual refuse acceptance rates, amount of refuse in place, and the nature, location, and amount of non-degradable waste (8-34-501.7 and 501.8).
- Well head monitoring including gauge pressure, LFG temperature, and LFG oxygen concentration (8-34-501.9, 505 and 63.1961(a))
- Continuous flow monitoring (8-34-501.10 and 63.1958(e)(f))
- Key emission control system operating parameters (8-34-509)
- Date and time for each startup and shutdown event for the GCCS (8-34-501)

2.0 SITE BACKGROUND INFORMATION

Shoreline Amphitheatre is sited on a small portion of a much larger landfill site owned and operated by the City of Mountain View. The portion that includes Shoreline is referred to as the Vista site and was operated as a municipal landfill from 1980 to 1993. Bill Graham Presents, Inc. (BGP) began leasing the land on the northeast edge of the Vista site from the City of Mountain View in 1986 and developed it as the Shoreline Amphitheatre entertainment complex. The portion of the landfill operated as Shoreline Amphitheatre has not accepted waste since BGP began leasing the property. BGP installed a GCCS shortly after developing the site as an amphitheatre and Live Nation had maintained it separately from the larger City of Mountain View Landfill.

A Compliance and Enforcement Agreement, dated September 29, 2019, between Live Nation Worldwide, Inc. (Live Nation) as the owner/operator of Shoreline, the BAAQMD, and the City of Mountain View required the GCCS to be reconfigured to transport LFG from the Shoreline Amphitheatre collection system directly to the City of Mountain View's flare station instead of directing the LFG to the CAS. As required by the September 2019 Compliance and Enforcement Agreement, SCS submitted a proposed plan for implementing the project on November 27, 2019. BAAQMD provided notification of District approval of the Plan via email from Brenda Cabral on March 24, 2020. On May 5, 2020, SCS submitted an application on behalf of Live Nation to the BAAQMD to obtain the necessary permits to reconfigure the GCCS to convey LFG the City of Mountain View's flare station. The Authority to Construct (ATC) permit was issued by the BAAQMD on February 1, 2021. The City of Mountain View required Live Nation to obtain a building permit prior to commencing construction. The building permit was received on June 17, 2021. GCCS construction activities began August 2021 and concluded in November 2021. As of November 30, 2021, All LFG collected from Shoreline is now routed to the City of Mountain View's flare station and the A-2 flare and CAS are no longer in operation.

2.1 EXISTING LANDFILL GAS CONTROL SYSTEM

The GCCS at Shoreline currently consists of 9 vertical extraction wells, which route all LFG to the City of Mountain View's flare station for destruction. A site plan of the existing GCCS is provided in **Appendix A**. Maintenance and monitoring of the GCCS is contracted to SCS Field Services (SCSFS).

3.0 MONITORING AND RECORDS

3.1 CONTINUOUSLY MONITORED PARAMETERS

Under BAAQMD Rule 8-34-301.1, the GCCS must be operated continuously. As of November 30, 2021, LFG from Shoreline is routed to the City of Mountain View's flare station and the A-2 flare and CAS are no longer in operation. Therefore, there are no longer any parameters that are continuously monitored. However, extraction wells are maintained under negative pressure (i.e., vacuum) continuously as required.

3.1.1 Gas Extraction System Downtime

As of November 30, 2021, LFG is routed to the City of Mountain View's flare station. There was no downtime for the gas extraction system during this reporting period.

3.1.2 Emission Control System Downtime

On November 30, 2021, the CAS system was permanently shutdown per the Compliance and Enforcement Agreement dated September 2019 and the ATC that was issued by the BAAQMD on February 1, 2021 to reconfigure the GCCS to the City of Mountain View's flare station.

During this reporting period, there were no instances when LFG flow passed through the flare or CAS uncontrolled (i.e., free venting), and the collected LFG stream was never diverted from the control devices. In compliance with the NESHAP rule, the work practice standard was met during each downtime event, and emissions were minimized as required. The City of Mountain View will report on SSM events for the control devices.

3.1.3 Individual Well Downtime

Beginning August 2021 and through November 2021, all of the wells at the Landfill that were connected to the GCCS were either reconfigured to convey LFG offsite or permanently decommissioned per the ATC issued by BAAQMD on February 1, 2021. There was no downtime for individual wells during this reporting period.

3.1.4 Minimum Flare Temperature

Flare A-2 did not operate during the reporting period. Compliance information for the control devices will be submitted by the City of Mountain View.

3.2 COMPONENT LEAK QUARTERLY MONITORING

3.2.1 Third Quarter 2022 Monitoring

The third quarter 2022 component leak monitoring, required by BAAQMD Rule 8-34-503, was conducted on August 23, 2022. Testing was performed by SCSFS using an organic vapor analyzer (OVA), which was calibrated on the day the testing occurred. Results of the monitoring event are provided in **Appendix B**.

No concentrations of methane gas over 500 parts per million by volume (ppmv) were detected during the third quarter 2022 monitoring event. The highest reading detected during the third quarter 2022 leak testing was 18 ppmv.

3.2.2 Fourth Quarter 2022 Monitoring

The fourth quarter 2022 component leak monitoring, required by BAAQMD Rule 8-34-503, is scheduled to take place in December 2022. Testing will be performed by SCSFS using an OVA, which was calibrated on the day of the testing. Results of the monitoring event will be provided in the next NSPS/NESHAP/BAAQMD Rule 8-34 Semi-Annual Report.

3.3 CONTROL EFFICIENCY

As of November 30, 2021, LFG from Shoreline is routed to the City of Mountain View's flare station and the A-2 flare and CAS are no longer in operation. Therefore, source testing is no longer performed on either the flare A-2 or the CAS.

3.4 LANDFILL SURFACE MONITORING

Surface emissions monitoring (SEM) at Shoreline is conducted in accordance with BAAQMD 8-34, NSPS, and NESHAP rules and as required by the City of Mountain View Fire Department for health and safety purposes. Shoreline uses an alternative to the standard back and forth sweep monitoring pattern typically used for landfill SEM. A reading is taken over 134 pre-determined points and along 17 continuous paths including sweeps across the wellfield surface, all buildings on the landfill property, and all areas accessible to concert patrons. The surface is monitored before every event that takes place at Shoreline, resulting in almost weekly monitoring during the spring, summer, and fall months. Winter monitoring is less frequent; however, rarely is there a time period greater than one month between surface monitoring events. As Shoreline is a closed landfill, the facility is eligible to conduct SEM annually rather than quarterly, per 8-34-506 as well as under the federal rules. As such, only the results from the annual SEM conducted by SCSFS during the first quarter of 2022 are included in this report.

3.4.1 Annual 2022 Monitoring

Annual surface emissions testing for any leaks with a methane concentration of greater than 500 ppmv, as required by BAAQMD Rule 8-34-506, was conducted on March 16, 2022. SCSFS performed the quarterly testing using an OVA, which was calibrated on the testing date.

No methane gas concentrations in excess of 500 ppmv were detected during the annual 2022 monitoring event. A figure of the monitored locations and the concentrations of methane detected are provided in **Appendix C**. The highest reading detected during the 2022 annual SEM was 8 ppmv. The next required annual SEM event is due by the end of 2023.

3.5 GAS COLLECTION SYSTEM INSTALLATIONS AND UPGRADES

From August 2021 through November 2021, the GCCS at Shoreline was reconfigured to route all LFG to the City of Mountain View - Shoreline Landfill's (Plant #2740) flare station. Nine wells remain connected to the GCCS and convey the LFG offsite allowing for permanent decommissioning of the CAS during construction.

3.6 WELL FIELD MONTHLY MONITORING

During the reporting period, the extraction wells were monitored for pressure, oxygen, and temperature as required by BAAQMD 8-34, NSPS, and NESHAP rules. Condition 876, Part 3 of the Landfill's permit allows for wells to be temporarily disconnected if the methane concentration at the wellhead is less than 20% by volume. In operational wells, the oxygen concentration is not permitted to exceed 15% by volume, unless the well contains less than 20% methane by volume, if the well is being operated in order to minimize exposure to LFG during an event (Condition 876, Part 3(i)).

Per the ATC, forty-seven (47) wells that were previously connected to the GCCS were decommissioned from August 1, 2021 through November 20, 2021. The wells at Shoreline are a sub-grade design with limited access, which only allows for operation of the valve. This is a necessity at Shoreline since the wellfield area is also used as a recreational amphitheatre. As such, it is sometimes difficult to get accurate readings of the gas quality at the wellhead since the valve where the sample port is connected is not at the actual wellhead. In addition, because of the use of the closed landfill as an outdoor amphitheatre, there is no margin of error for LFG surface emissions or migration; therefore, the extraction wells are generally kept online throughout the year although they do pull low quality gas with high oxygen. The nine active gas extraction wells were monitored on a monthly basis during this reporting period. Monitoring results are provided in **Appendix D**.

3.6.1 Pressure

All nine of the operational extraction wells were operating under negative pressure during the monitoring events conducted during the reporting period, in accordance with BAAQMD Rule 8-34-305 and 8-34-414. No further monitoring was required.

3.6.2 Oxygen

Efforts were made to operate all extraction wells with an oxygen content of less than 15% in accordance with the Landfill's permit. Because Shoreline cannot afford to allow surface leaks while recreational events are occurring on the premises, the LFG extraction system vacuum is often operated at a higher than optimal extraction rate; as such, oxygen concentrations in the collected LFG can be higher than in typical scenarios. During the reporting period, there were no exceedances of the oxygen limit based on the alternative wellhead limits that have been approved for the Landfill. Note under the EG rule, Subpart 000, and the NESHAP rule, oxygen concentration greater than 5% is no longer an exceedance, but under BAAQMD Rule 8-34-414 it still is. Wellfield monitoring and tuning will continue in an effort to adhere to these requirements as stipulated in the permit.

3.6.3 Temperature

As discussed above, the wells at Shoreline are a sub-grade design with limited access, which only allows for operation of the valve. Therefore, temperature monitoring of the individual wellheads is not always accurate, and any readings would not be representative of actual LFG temperatures at the actual wellhead. However, readings were taken in order to comply with BAAQMD Rule 8-34, and these temperature readings all show ambient temperatures below 131 degrees Fahrenheit (°F) (55 degrees Celsius [°C]). No enhanced monitoring or additional corrective action under the NESHAP's rule was triggered during the reporting period.

3.6.4 Monthly Methane and Flow Readings (Test Port)

Monthly readings were taken at the test port located at the point where the collection system ties into the City of Mountain View's GCCS. Condition #16065 (5)(b) of Shoreline's Title V Permit requires the methane concentration in the landfill gas at the main header is not less than 35% CH₄ by volume (dry basis). The monthly flow data along with the methane concentration is provided in **Table 1**.

3.7 COVER INTEGRITY MONITORING

The integrity of the landfill cover is monitored continuously at Shoreline. The use of the site as a recreational amphitheatre with the patrons actually sitting on the final grade of the landfill requires that the cover be no less than perfect. Shoreline employs a full-time grounds maintenance team that continuously monitors and makes any necessary repairs to the landfill cover to ensure its continuous integrity.

Additionally, a full inspection of the grounds is conducted prior to each event during the concert season and at least monthly during the remainder of the year. This monitoring schedule complies with and far exceeds the BAAQMD Rule 8-34-510, NSPS, and NESHAP schedule requirement of monthly and quarterly monitoring. Monthly cover integrity monitoring for purposes of BAAQMD Rule 8-34 was conducted on June 30, 2022, July 27, 2022, August 31, 2022, September 28, 2022, October 31, 2022, and November 30, 2022. Surface emissions and cover integrity monitoring results indicate that the plastic cover is intact and without leaks.

3.8 GAS GENERATION ESTIMATE

Shoreline is a small portion of the larger City of Mountain View Landfill, specifically the northeast edge of the Vista Site. Shoreline includes approximately 10 acres of the 84-acre Vista Site; however, it only represents one slope of the landfill, so the actual percentage of refuse is expected to be approximately 5% of the entire Vista Site. The LFG generation rate for the Vista portion of the Mountain View Landfill was estimated using the U.S. Environmental Protection Agency (EPA) and is provided in **Appendix E**.

As of November 30, 2021, all LFG collected at Shoreline is routed to the City of Mountain View's flare station.

3.9 ANNUAL WASTE ACCEPTANCE RATE AND REFUSE IN PLACE

As discussed in Section 3.8, Shoreline is a small portion of the City of Mountain View Landfill, specifically the northeast edge of the Vista Site. The Landfill has not accepted waste since 1986. Detailed records for annual acceptance rates and refuse-in-place totals for the Mountain View Landfill are kept by the City of Mountain View. Shoreline currently has approximately 366,000 tons or less of refuse in place.

3.9.1 Non-Degradable Waste Areas

There are no landfill areas that are excluded from the collection system requirements. No areas of non-degradable waste deposition are known to exist.

3.10 GCCS DOWNTIME

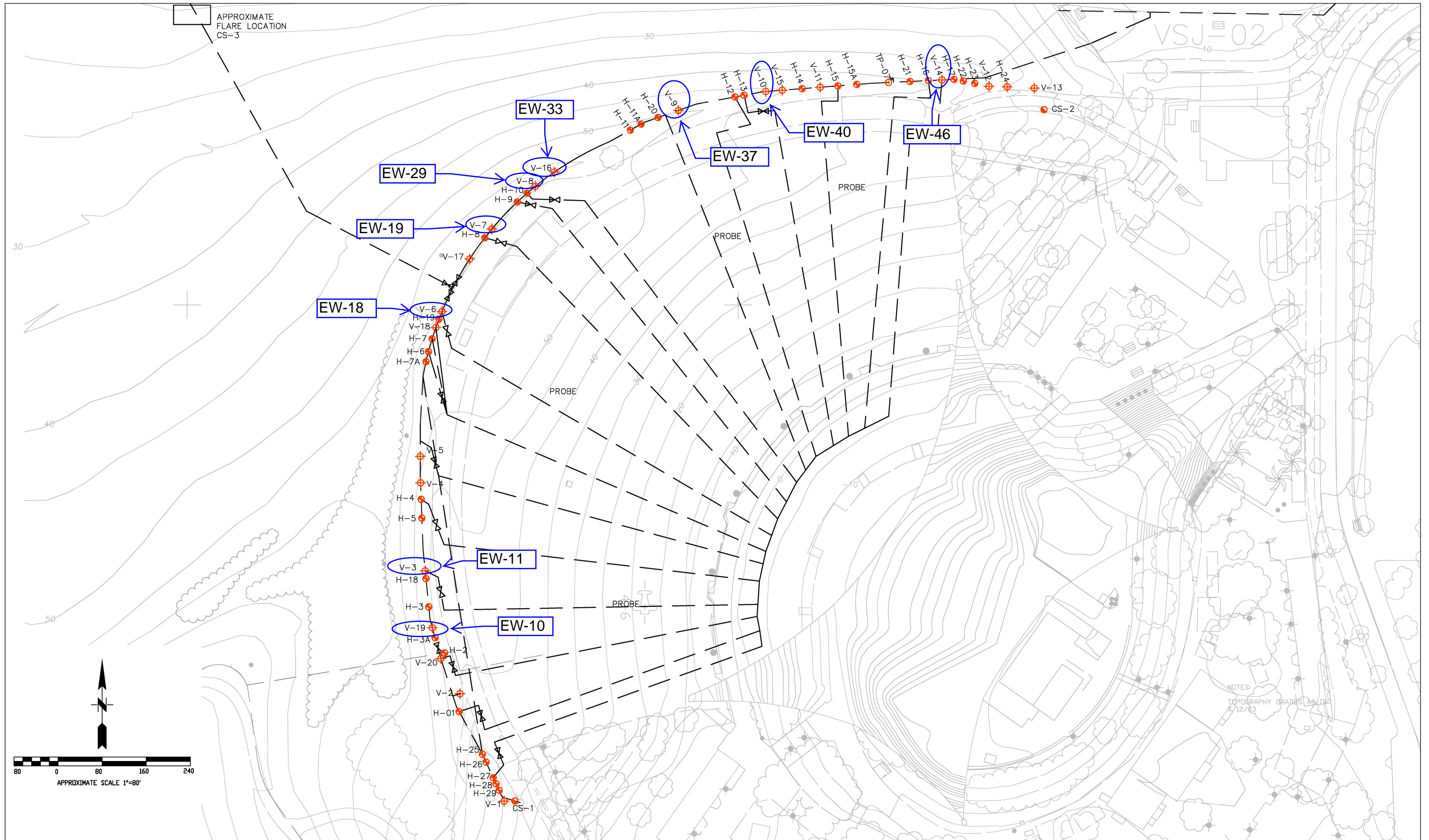
As of November 30, 2021, both the CAS and the A-2 flare were permanently shut down. All LFG is routed to the City of Mountain View's flare station. Any downtime of the control system will be reported by the City of Mountain View.

Tables

**Table 1. Average Monthly Flow Meter Readings
Shoreline Amphitheatre, Mountain View, CA
June 1, 2022 through November 30, 2022**

Month	Methane Content (%)	Average LFG Flow (scfm)	Average LFG Flow at 50% Methane (scfm)
Jun-22	55.6	9.0	10.0
Jul-22	55.2	10.0	11.0
Aug-22	59.9	7.0	8.4
Sep-22	53.2	8.0	8.5
Oct-22	46.3	8.0	7.4
Nov-22	61.0	7.0	8.5
Average During Reporting Period	55.2	8.2	9.0

Appendix A
LFG Collection and Control System Figure



ABBREVIATION
 TC TEST PORT
 CS CONDENSATE SUMP
 H HORIZONTAL COLLECTOR
 V VERTICAL

LEGEND
 ——— EXISTING HEADER AND LATERAL LINES
 ◆ LFG VERTICAL EXTRACTION WELL
 ● LFG HORIZONTAL EXTRACTION WELL
 □ LFG TEST PIT
 ▲ LFG CONDENSATE SUMP

SCS ENGINEERS
 ENVIRONMENTAL CONSULTANTS
 3050 FITE CIRCLE, SUITE 106
 SACRAMENTO, CA 95827-1808
 PH. (916) 361-1297 FAX. (916) 361-1299

PRJ. NO. 01202192.00	DWN. BY: AB	ACAD FILE: SHORELINE.dwg
DSN. BY: ---	CHK. BY: ---	APP. BY: ---

**THE SHORELINE AMPHITHEATRE
 CITY OF MOUNTAIN VIEW**

SHEET TITLE	LFG COLLECTION SYSTEM		
PROJECT TITLE	SHORELINE AMPHITHEATRE LANDFILL		

NO.	REVISION	DATE
▲		
▲		
▲		
▲		

DATE:	12/17/04
SCALE:	1"=80'
DRAWING NO.	

1 of 1

Appendix B

Quarterly Component Leak Monitoring Results

**Component Emissions Monitoring Results
Shoreline Amphitheatre, Mountain View, California**

Field Technician and Weather Conditions				
Technician	Date	Ambient Temp	Barometric Pressure (in - Hg)	General Weather
Don Gibson	08/23/2022	82	30.0	Clear
		Wind Speed	Wind Direction	
		10 to 15	N	
Name		Valve Vault (ppm)	Test Port Vault (ppm)	Re-Testing
EW-10	08/23/2022	3	3	None
EW-11	08/23/2022	18	18	None
EW-18	08/23/2022	14	14	None
EW-19	08/23/2022	18	18	None
EW-29	08/23/2022	2	2	None
EW-33	08/23/2022	1	1	None
EW-37	08/23/2022	3	3	None
EW-40	08/23/2022	13	13	None
EW-46	08/23/2022	2	2	None
Grass Area	Date	Low ppm	High ppm	Above 500 ppm
Surface Scan	08/23/2022	0	2	None



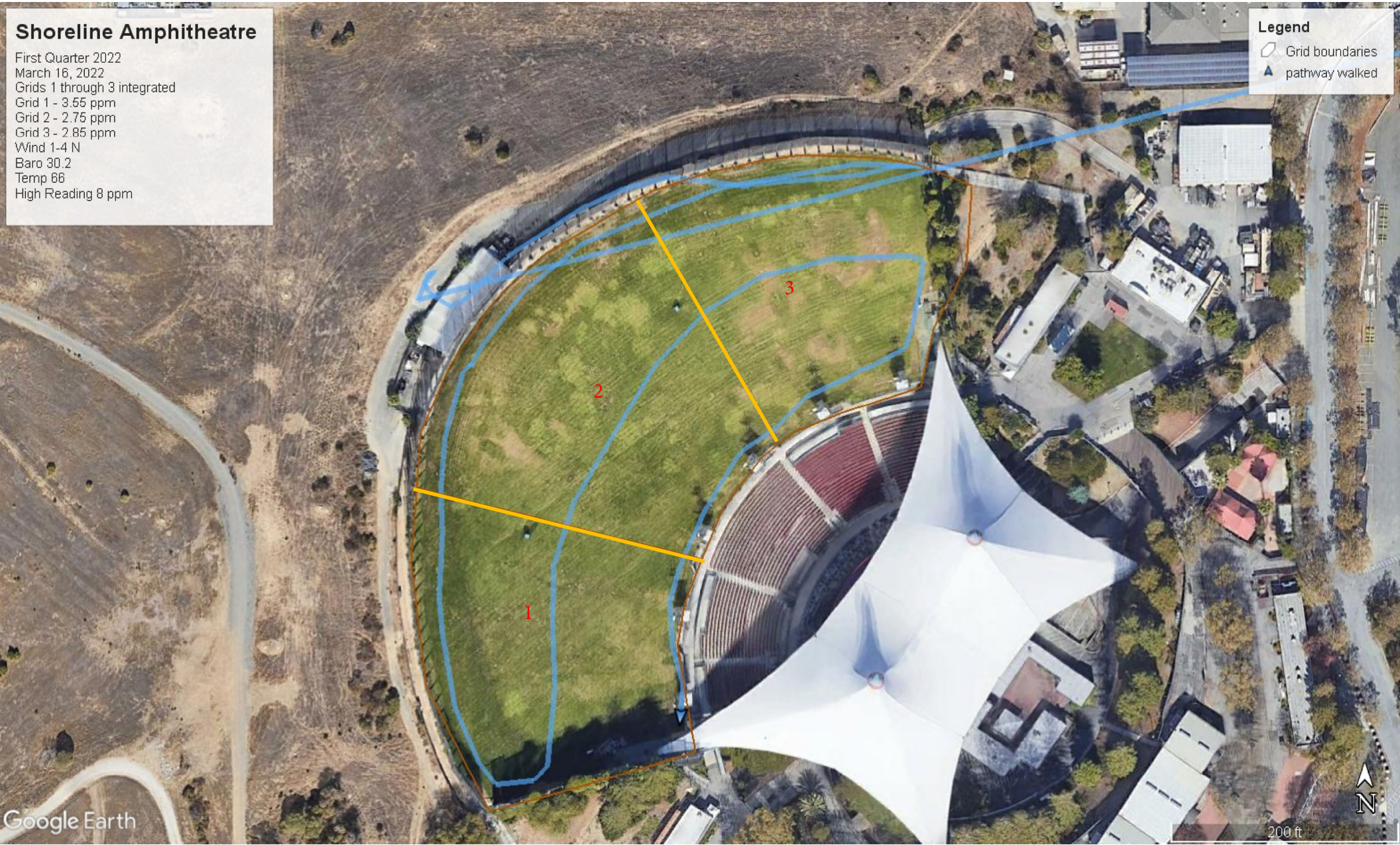
Appendix C
Annual Surface Emissions Monitoring Results

Shoreline Amphitheatre

First Quarter 2022
March 16, 2022
Grids 1 through 3 integrated
Grid 1 - 3.55 ppm
Grid 2 - 2.75 ppm
Grid 3 - 2.85 ppm
Wind 1-4 N
Baro 30.2
Temp 66
High Reading 8 ppm

Legend

- Grid boundaries
- pathway walked



Google Earth

200 ft

Appendix D

Well Monitoring Data

Shoreline Amphitheatre - Well Data - 06/01/2022 to 11/30/2022

Point Name	Record Date	CH4 (% by vol)	CO2 (% by vol)	O2 (% by vol)	Bal Gas (% by vol)	Init Temp (F)	Adj Temp (F)	Init Static Pressure ("H2O)	Adj Static Pressure ("H2O)	Comments
EW-10	6/30/2022 10:08	69.60	30.00	0.00	0.40	71.00	71.30	-0.62	-0.59	Valve Adjustment:No Change
EW-10	7/27/2022 11:42	71.90	27.10	0.00	1.00	82.80	81.20	-0.54	-0.52	
EW-10	8/31/2022 10:31	68.90	31.10	0.00	0.00	76.90	76.90	-0.54	-0.52	
EW-10	9/28/2022 11:14	66.60	32.60	0.00	0.80	74.00	77.00	-0.62	-0.60	
EW-10	10/31/2022 13:08	36.20	24.10	4.30	35.40	73.00	73.00	-0.46	-0.46	
EW-10	11/30/2022 10:37	41.80	27.40	2.20	28.60	56.10	54.80	-0.12	-0.10	
EW-11	6/30/2022 10:13	63.70	33.60	0.10	2.60	71.10	71.20	-0.23	-0.23	
EW-11	7/27/2022 11:45	62.50	34.90	0.00	2.60	92.40	92.30	-0.10	-0.10	
EW-11	8/31/2022 10:35	62.90	36.20	0.00	0.90	76.40	76.00	-0.14	-0.14	
EW-11	9/28/2022 11:18	61.80	34.80	0.00	3.40	74.10	74.20	-0.62	-0.62	
EW-11	10/31/2022 13:11	62.50	34.40	0.00	3.10	72.00	71.80	-0.57	-0.48	
EW-11	11/30/2022 10:40	66.70	33.30	0.00	0.00	60.20	62.20	-0.12	-0.13	
EW-18	6/30/2022 10:20	60.70	38.30	0.00	1.00	68.90	71.10	-0.17	-0.17	Valve Adjustment:No Change
EW-18	7/27/2022 11:52	53.80	33.00	2.40	10.80	80.20	79.00	-0.11	-0.12	
EW-18	8/31/2022 10:42	56.40	35.10	1.40	7.10	74.20	74.10	-0.15	-0.14	
EW-18	9/28/2022 11:25	55.20	31.90	0.50	12.40	72.40	72.50	-0.62	-0.60	
EW-18	10/31/2022 13:24	58.00	29.80	0.00	12.20	64.90	64.70	-0.13	-0.14	
EW-18	11/30/2022 10:47	66.90	32.90	0.00	0.20	67.20	67.20	-0.25	-0.39	
EW-19	6/30/2022 10:22	62.00	31.50	1.70	4.80	69.30	68.70	-0.18	-0.18	
EW-19	7/27/2022 11:54	64.80	32.50	0.40	2.30	78.90	78.80	-0.13	-0.14	
EW-19	8/31/2022 10:45	65.60	34.40	0.00	0.00	74.10	72.60	-0.11	-0.13	
EW-19	9/28/2022 11:22	66.20	33.50	0.00	0.30	74.30	74.10	-0.31	-0.24	
EW-19	10/31/2022 13:23	66.20	33.20	0.00	0.60	65.00	64.90	-0.16	-0.18	
EW-19	11/30/2022 10:48	67.10	32.90	0.00	0.00	67.90	67.10	-0.13	-0.15	
EW-29	6/30/2022 10:35	60.70	36.60	0.10	2.60	76.50	76.20	-0.23	-0.22	
EW-29	7/27/2022 12:05	61.50	36.70	0.00	1.80	78.40	78.10	-0.11	-0.11	
EW-29	8/31/2022 10:54	59.50	36.10	0.60	3.80	83.80	83.40	-0.18	-0.17	
EW-29	9/28/2022 11:37	58.70	34.70	1.10	5.50	75.60	75.70	-0.62	-0.65	
EW-29	10/31/2022 13:33	60.50	37.20	0.00	2.30	63.80	63.70	-0.28	-0.27	
EW-29	11/30/2022 10:59	59.00	36.70	0.80	3.50	61.90	62.20	-0.93	-0.92	
EW-33	6/30/2022 10:39	59.20	38.30	0.00	2.50	66.70	66.60	-0.03	-0.02	
EW-33	7/27/2022 12:11	58.10	37.70	0.00	4.20	71.10	71.20	-0.11	-0.14	



Shoreline Amphitheatre - Well Data - 06/01/2022 to 11/30/2022

Point Name	Record Date	CH4 (% by vol)	CO2 (% by vol)	O2 (% by vol)	Bal Gas (% by vol)	Init Temp (F)	Adj Temp (F)	Init Static Pressure ("H2O)	Adj Static Pressure ("H2O)	Comments
EW-33	8/31/2022 10:58	59.10	39.30	0.00	1.60	67.40	67.90	-0.11	-0.12	
EW-33	9/28/2022 11:42	59.80	38.70	0.00	1.50	66.80	66.70	-0.10	-0.12	
EW-33	10/31/2022 13:37	59.10	40.10	0.00	0.80	63.30	63.30	-0.15	-0.19	
EW-33	11/30/2022 11:03	59.20	40.00	0.00	0.80	53.10	53.00	-0.16	-0.16	
EW-37	6/30/2022 10:43	62.40	37.20	0.00	0.40	68.80	68.50	-0.02	-0.01	
EW-37	7/27/2022 12:14	62.30	36.50	0.00	1.20	70.30	69.90	-0.03	-0.03	
EW-37	8/31/2022 11:01	61.90	38.00	0.00	0.10	68.30	67.80	-0.10	-0.11	
EW-37	9/28/2022 11:46	62.70	34.10	0.00	3.20	66.80	66.60	-0.10	-0.10	
EW-37	10/31/2022 13:41	61.20	38.80	0.00	0.00	62.10	62.00	-0.11	-0.11	
EW-37	11/30/2022 11:10	61.40	38.60	0.00	0.00	66.10	66.50	-0.07	-0.08	
EW-40	6/30/2022 10:48	62.20	35.30	0.00	2.50	69.20	68.10	-0.02	-0.05	
EW-40	7/27/2022 12:18	62.10	35.80	0.00	2.10	68.40	70.10	-0.03	-0.07	
EW-40	8/31/2022 11:04	59.70	35.30	0.40	4.60	69.60	69.50	-0.10	-0.10	
EW-40	9/28/2022 11:51	61.20	34.20	0.20	4.40	70.40	69.10	-0.10	-0.11	
EW-40	10/31/2022 13:44	60.60	37.00	0.00	2.40	62.40	62.20	-0.03	-0.04	
EW-40	11/30/2022 11:13	61.20	37.90	0.00	0.90	62.20	61.70	-0.07	-0.10	
EW-46	6/30/2022 10:51	62.90	32.50	1.10	3.50	76.10	76.10	-0.01	-0.02	
EW-46	7/27/2022 12:22	61.40	32.60	1.00	5.00	87.60	87.10	-0.01	-0.04	
EW-46	8/31/2022 11:09	65.90	34.10	0.00	0.00	68.30	68.00	-0.03	-0.02	
EW-46	9/28/2022 11:55	66.30	33.50	0.00	0.20	69.00	69.40	-0.10	-0.11	
EW-46	10/31/2022 13:45	63.80	33.60	0.00	2.60	62.90	63.20	-0.06	-0.06	
EW-46	11/30/2022 11:17	65.30	34.70	0.00	0.00	53.50	53.30	-0.04	-0.06	



Appendix E

Projected LFG and NMOC Generation Rates – Mountain View (Vista)

**PROJECTED LFG AND NMOC GENERATION RATES
CITY OF MOUNTAINVIEW LANDFILL, MOUNTAIN VIEW, CALIFORNIA**

Year	Disposal Rate (tons/yr)	Refuse In-Place (tons)	Disposal Rate (Mg/yr)	Refuse In-Place (Mg)	Methane Generation Rates (m ³ /yr)	LFG Generation Rates (cfm) (Million ft ³ /yr)	NMOC Generation Rates (tons/yr)	NMOC Generation Rates (Mg/yr)
1968	0	0	0	0	0.000E+00	0	0	0
1969	0	0	0	0	0.000E+00	0	0	0
1970	0	0	0	0	0.000E+00	0	0	0
1971	0	0	0	0	0.000E+00	0	0	0
1972	0	0	0	0	0.000E+00	0	0	0
1973	0	0	0	0	0.000E+00	0	0	0
1974	0	0	0	0	0.000E+00	0	0	0
1975	0	0	0	0	0.000E+00	0	0	0
1976	0	0	0	0	0.000E+00	0	0	0
1977	0	0	0	0	0.000E+00	0	0	0
1978	0	0	0	0	0.000E+00	0	0	0
1979	0	0	0	0	0.000E+00	0	0	0
1980	0	0	0	0	0.000E+00	0	0	0
1981	261,619	0	237,337	0	0.000E+00	0	0	0
1982	266,852	261,619	242,084	237,337	8.065E+05	108	57	25
1983	272,189	528,471	246,926	479,421	1.613E+06	217	114	50
1984	277,632	800,660	251,864	726,347	2.420E+06	325	171	75
1985	283,185	1,078,292	256,901	978,210	3.228E+06	434	228	100
1986	288,849	1,361,477	262,039	1,235,111	4.037E+06	543	285	125
1987	294,626	1,650,326	267,280	1,497,151	4.848E+06	651	342	151
1988	300,518	1,944,952	272,625	1,764,431	5.660E+06	761	400	176
1989	306,529	2,245,470	278,078	2,037,056	6.474E+06	870	457	201
1990	312,659	2,551,999	283,639	2,315,135	7.291E+06	980	515	227
1991	318,912	2,864,658	289,312	2,598,774	8.110E+06	1,090	573	252
1992	325,291	3,183,570	295,099	2,888,086	8.933E+06	1,200	631	278
1993	331,797	3,508,861	301,001	3,183,185	9.759E+06	1,311	689	303
1994	0	3,840,658	0	3,484,186	1.059E+07	1,423	748	329
1995	0	3,840,658	0	3,484,186	1.038E+07	1,395	733	323
1996	0	3,840,658	0	3,484,186	1.017E+07	1,367	719	316
1997	0	3,840,658	0	3,484,186	9.972E+06	1,340	704	310
1998	0	3,840,658	0	3,484,186	9.774E+06	1,313	690	304
1999	0	3,840,658	0	3,484,186	9.581E+06	1,287	677	298
2000	0	3,840,658	0	3,484,186	9.391E+06	1,262	663	292
2001	0	3,840,658	0	3,484,186	9.205E+06	1,237	650	286
2002	0	3,840,658	0	3,484,186	9.023E+06	1,212	637	280
2003	0	3,840,658	0	3,484,186	8.844E+06	1,188	625	275
2004	0	3,840,658	0	3,484,186	8.669E+06	1,165	612	269
2005	0	3,840,658	0	3,484,186	8.497E+06	1,142	600	264
2006	0	3,840,658	0	3,484,186	8.329E+06	1,119	588	259
2007	0	3,840,658	0	3,484,186	8.164E+06	1,097	577	254
2008	0	3,840,658	0	3,484,186	8.002E+06	1,075	565	249
2009	0	3,840,658	0	3,484,186	7.844E+06	1,054	554	244
2010	0	3,840,658	0	3,484,186	7.689E+06	1,033	543	239
2011	0	3,840,658	0	3,484,186	7.536E+06	1,013	532	234
2012	0	3,840,658	0	3,484,186	7.387E+06	993	522	230
2013	0	3,840,658	0	3,484,186	7.241E+06	973	511	225
2014	0	3,840,658	0	3,484,186	7.098E+06	954	501	221
2015	0	3,840,658	0	3,484,186	6.957E+06	935	491	216
2016	0	3,840,658	0	3,484,186	6.819E+06	916	482	212
2017	0	3,840,658	0	3,484,186	6.684E+06	898	472	208
2018	0	3,840,658	0	3,484,186	6.552E+06	880	463	204
2019	0	3,840,658	0	3,484,186	6.422E+06	863	454	200
2020	0	3,840,658	0	3,484,186	6.295E+06	846	445	196
2021	0	3,840,658	0	3,484,186	6.170E+06	829	436	192
2022	0	3,840,658	0	3,484,186	6.048E+06	813	427	188
2023	0	3,840,658	0	3,484,186	5.928E+06	797	419	184
2024	0	3,840,658	0	3,484,186	5.811E+06	781	410	181
2025	0	3,840,658	0	3,484,186	5.696E+06	765	402	177
2026	0	3,840,658	0	3,484,186	5.583E+06	750	394	174
2027	0	3,840,658	0	3,484,186	5.473E+06	735	387	170
2028	0	3,840,658	0	3,484,186	5.364E+06	721	379	167

ESTIMATED NMOC CONCENTRATION IN LFG: 4000 ppmv
 ASSUMED METHANE CONTENT OF LFG: 50%
 SELECTED DECAY RATE CONSTANT: 0.02
 SELECTED ULTIMATE METHANE RECOVERY RATE: 5,443 ft³/ton
 METRIC EQUIVALENT: 169.9 cu m/Mg

**THIS PAGE IS LEFT
INTENTIONALLY BLANK**

SHORELINE AMPHITHEATRE

TITLE V SEMI-ANNUAL MONITORING REPORT

SITE: SHORELINE AMPHITHEATRE	FACILITY ID#: A2561
REPORTING PERIOD: <i>from</i> 06/01/2022 <i>through</i> 11/30/2022	

List of Permitted Sources and Abatement Device

Permit Unit Number	Equipment Description
S-1	Landfill and Gas Collection System
S-3	Diesel Engine for Emergency Standby Generator
A-1	Carbon Adsorption System
A-2	Landfill Gas Flare

A Compliance and Enforcement Agreement, dated September 29, 2019, between Live Nation, the BAAQMD, and the City of Mountain View requires the landfill gas (LFG) collection and control system (GCCS) to be reconfigured to transport LFG from the Shoreline Amphitheatre collection system directly to the City of Mountain View's flare station instead of directing the LFG to the CAS. As required by the September 2019 Compliance and Enforcement Agreement, SCS submitted a proposed plan for implementing the project on November 27, 2019. Brenda Cabral of the BAAQMD provided notification of District approval of the Plan via email on March 24, 2020. On May 5, 2020, SCS submitted a permit application on behalf of Live Nation to the BAAQMD to apply for the necessary permits to reconfigure the GCCS to the City of Mountain View's flare station. The Authority to Construct (ATC) permit was issued by the BAAQMD on February 1, 2021. The City of Mountain View required Live Nation to obtain a building permit prior to commencing construction. The building permit was received on June 17, 2021. GCCS construction activities began August 2021 and concluded in November 2021. As of November 30, 2021, LFG from Shoreline is routed to the City of Mountain View's flare station and the A-2 flare and CAS are no longer in operation.

SHORELINE AMPHITHEATRE

TITLE V SEMI-ANNUAL MONITORING REPORT

Site: Shoreline Amphitheatre	Facility ID#: A2561
Permitted Unit: S-1 – Landfill Gas Collection System	Reporting Period: from 06/01/2022 through 11/30/2022

Type of Limit or Criteria	Monitoring Requirement Citation	Parameters Monitored	Monitoring Frequency	Citation of Limit	Limit	Compliance Summary	Corrective Actions Taken
Collection System Installation Dates	BAAQMD 8-34-501.7 and 501.8	Records	Periodic / Event Basis	BAAQMD 8-34-304.1	For Inactive / Closed Areas: collection system components must be installed and operating by 2 years + 60 days after initial placement	Continuous	N/A
Gas Flow	BAAQMD 8-34-501.10 and 508	Gas Flow Meter and Recorder (every 15 minutes) – <i>N/A control devices were decommissioned as of November 30, 2021</i>	Continuous	BAAQMD 8-34-301.1	Landfill gas collection system shall operate continuously and all collected gases shall be vented to a properly operating control system	Continuous	N/A
Gas Flow	BAAQMD Condition # 876, Parts 10,11, and 18b-e and BAAQMD Regulation 8-34-501.1 and 8-34-501.2	Gas Flow Meter, Flare Alarms, and Records of Landfill Gas Flow Rates, Collection and Control Systems Downtime, and Collection System Components – <i>N/A control devices were decommissioned as of November 30, 2021</i>	Periodic / Daily	BAAQMD Condition # 876, Parts 3 and 4	Landfill gas collection system shall operate continuously and all collected gases shall be vented to a properly operating control system	Continuous	N/A
Collection and Control Systems Shutdown Time	BAAQMD Condition # 876, Parts 18b, 18d, and 18e and BAAQMD 8-34-501.1	Operating Records – <i>N/A control devices were decommissioned as of November 30, 2021</i>	Periodic / Daily	BAAQMD 8-34-113.2	≤240 hours/year and 5 consecutive days	Continuous	N/A

SHORELINE AMPHITHEATRE

TITLE V SEMI-ANNUAL MONITORING REPORT

Site: Shoreline Amphitheatre	Facility ID#: A2561
Permitted Unit: S-1 – Landfill Gas Collection System	Reporting Period: from 06/01/2022 through 11/30/2022

Type of Limit or Criteria	Monitoring Requirement Citation	Parameters Monitored	Monitoring Frequency	Citation of Limit	Limit	Compliance Summary	Corrective Actions Taken
Periods of In-operation for Parametric Monitors	BAAQMD 1-523.4	Operating Records for All Parametric Monitors	Periodic / Daily	BAAQMD 1-523.2	≤15 consecutive days/incident and ≤30 days/12 month period	Continuous	N/A
Continuous monitors	40 CFR 60.7(b)	Operating Records for All Continuous Monitors – <i>N/A control devices were decommissioned as of November 30, 2021</i>	Periodic / Daily	40 CFR 60.13(e)	Requires Continuous Operation except for breakdowns, repairs, calibration, and required span adjustments	Continuous	N/A
Wellhead Pressure	BAAQMD 8-34-414, 501.9 and 505.1 and BAAQMD Condition # 876, Part 18i	Monthly Inspection and Records	Periodic / Monthly	BAAQMD 8-34-305.1 and BAAQMD Condition #876, Part 3b	< 0 psig (applies to each well or collector connected to vacuum)	Continuous	N/A
Temperature of Gas at Wellhead	BAAQMD 8-34-414, 501.9 and 505.2 and BAAQMD Condition # 876, Part 18i	Monthly Inspection and Records	Periodic / Monthly	BAAQMD 8-34-305.2 and BAAQMD Condition #876, Part 3b	<55°C (131°F) (applies to each well or collector connected to vacuum)	Continuous	N/A
Gas Concentrations at Wellhead	BAAQMD Condition # 876, Part 3d –e and 18i	Monthly Inspection and Records	Periodic / Monthly	BAAQMD Condition #876, Part 3c(i)	O ₂ ≤ 15% by volume (applies to all wells and collectors connected to vacuum, except as described in Part 3c (ii-iii))	Continuous	N/A
Collection System Component	BAAQMD Condition # 876, Parts 3d-e and	Monthly Inspection and Records	Periodic / Monthly	BAAQMD 8-34-404 and BAAQMD Condition # 876, Part	≥20 wells and collectors operating continuously at any one time and re-	Continuous	Note: As of November 30, 2021, only nine

SHORELINE AMPHITHEATRE

TITLE V SEMI-ANNUAL MONITORING REPORT

Site: Shoreline Amphitheatre	Facility ID#: A2561
Permitted Unit: S-1 – Landfill Gas Collection System	Reporting Period: from 06/01/2022 through 11/30/2022

Type of Limit or Criteria	Monitoring Requirement Citation	Parameters Monitored	Monitoring Frequency	Citation of Limit	Limit	Compliance Summary	Corrective Actions Taken
Operating Requirements	18i			3a(i & iii)	connect wells and collectors to vacuum when wellhead CH ₄ > 20% by volume		wells remain connected to the GCCS to convey LFG to the City of Mountain View flare station.
Well Shutdown Limits	BAAQMD 8-34-117.6 and 501.1	Records	Periodic / Daily	BAAQMD 8-34-117.4	No more than 5 wells at a time or 10% of total collection system, whichever is less	Continuous	N/A
Well Shutdown Limits	BAAQMD 8-34-117.6 and 501.1	Records	Periodic / Daily	BAAQMD 8-34-117.5	≤24 hours per well	Continuous	N/A
TOC (Total Organic Compounds Plus Methane)	BAAQMD 8-34-501.6 and 503 and BAAQMD Condition # 876, Part 18i	Quarterly Inspection of Collection and Control System Components with Portable Analyzer and Records	Periodic / Quarterly	BAAQMD 8-34-301.2	≤1000 ppmv as methane (component leak limit)	Continuous	N/A
Surface emission monitoring (TOC)	BAAQMD 8-34-415, 416, 501.6, 506 and 510 and BAAQMD Condition # 876, Part 18i	Monthly cover visual inspection of Cover; Quarterly Inspection with Portable Analyzer of Surface, Various Reinspection Times for Leaking Areas and Records	Periodic / Monthly, Quarterly, and Event Basis	BAAQMD 8-34-303	≤500 ppmv as methane at 2 inches above surface (surface leak limit)	Continuous	N/A

SHORELINE AMPHITHEATRE

TITLE V SEMI-ANNUAL MONITORING REPORT

Site: Shoreline Amphitheatre	Facility ID#: A2561
Permitted Unit: S-1 – Landfill Gas Collection System	Reporting Period: from 06/01/2022 through 11/30/2022

Type of Limit or Criteria	Monitoring Requirement Citation	Parameters Monitored	Monitoring Frequency	Citation of Limit	Limit	Compliance Summary	Corrective Actions Taken
H ₂ S	None	N/A	None	BAAQMD 9-2-301	Property Line Ground Level Limits: ≤0.06 ppm, averaged over 3 minutes and ≤0.03 ppm, averaged over 60 minutes.	Continuous	N/A
Amount of Waste Accepted	BAAQMD Regulation 8-34-501.7	Records	Periodic / Annual	BAAQMD Condition # 876, Part 1	0 tons/day and ≤366,000 tons (cumulative amount of all wastes) and ≤542,000 yd ³ (cumulative amount of all wastes and cover materials)	Continuous	N/A
Startup Shutdown or Malfunction Procedures	40 CFR 63.1980(a-b)	Records (all occurrences, duration of each, corrective actions)	Periodic/Event Basis	40 CFR 63.6(e)	Minimize Emissions by Implementing SSM Plan	Continuous	N/A

SHORELINE AMPHITHEATRE

TITLE V SEMI-ANNUAL MONITORING REPORT

Site: Shoreline Amphitheatre	Facility ID#: A2561
Permitted Unit: A-2 – Landfill Gas Flare	Reporting Period: from 06/01/2022 through 11/30/2022

Type of Limit or Criteria	Monitoring Requirement Citation	Parameters Monitored	Monitoring Frequency	Citation of Limit	Limit	Compliance Summary	Corrective Actions Taken
Non-Methane Organic Compounds (NMOC)	BAAQMD 8-34-412 and 501.4 and BAAQMD Condition # 876, Parts 16 and 18i	Source Tests and Records	Periodic / Annual	BAAQMD 8-34-301.3	≥98% removal by weight OR < 30 ppmv, dry basis @ 3% O ₂ , expressed as methane (applies to A-2 Landfill Gas Flare only)	Continuous	Flare A-2 did not operate during the reporting period.
Temperature of Combustion Zone (CT)	BAAQMD 8-34-501.3 and 507 and SIP 8-34-501.3 and BAAQMD Condition # 876, Part 9	Temperature Sensor and Recorder (continuous)	Continuous	BAAQMD Condition # 876, Part 8a	CT ≥1400°F, averaged over any 3-hour period (applies to A-2 Landfill Gas Flare when A-2 is operated alone)	Continuous	Flare A-2 did not operate during the reporting period.
Temperature of Combustion Zone (CT)	BAAQMD 8-34-501.3 and 507 and SIP 8-34-501.3 and BAAQMD Condition # 876, Part 9	Temperature Sensor and Recorder (continuous)	Continuous	BAAQMD Condition # 876, Part 8b	CT ≥1200°F, averaged over any 3-hour period (applies to A-2 Landfill Gas Flare when A-2 is down stream of A-1)	Continuous	Flare A-2 did not operate during the reporting period.
Opacity	None	N/A	None	BAAQMD 6-1-301	Ringlemann No. 1 for <3 minutes/hour (applies to A-1 Carbon Adsorption System and A-2 Landfill Gas Flare)	Continuous	Flare A-2 did not operate during the reporting period.
FP	None	N/A	None	BAAQMD 6-1-310	≤0.15 grains/dscf (applies to A-1 Carbon Adsorption System and A-2 Landfill Gas Flare)	Continuous	Flare A-2 did not operate during the reporting period.

SHORELINE AMPHITHEATRE

TITLE V SEMI-ANNUAL MONITORING REPORT

Site: Shoreline Amphitheatre	Facility ID#: A2561
Permitted Unit: A-2 – Landfill Gas Flare	Reporting Period: from 06/01/2022 through 11/30/2022

Type of Limit or Criteria	Monitoring Requirement Citation	Parameters Monitored	Monitoring Frequency	Citation of Limit	Limit	Compliance Summary	Corrective Actions Taken
SO ₂	None	N/A	None	BAAQMD 9-1-301	Property Line Ground Level Limits: ≤0.5 ppmb for 3 minutes and ≤0.25 ppm for 60 min. and ≤0.05 ppm for 24 hours (applies to A-2 Landfill Gas Flare only)	Continuous	Flare A-2 did not operate during the reporting period.
SO ₂	BAAQMD Condition # 876, Parts 16g, or 17 and 18h-i	Annual TRS Analysis of Landfill Gas, or Annual SO ₂ Test at Flare, and Records	Periodic/ Annual	BAAQMD Regulation 9-1-302	≤ 300 ppm (dry basis) (applies to A-2 Landfill Gas Flare only)	Continuous	Flare A-2 did not operate during the reporting period.
Total Sulfur Content in Landfill Gas	BAAQMD Condition # 876, Parts 17 and 18h-i	Annual TRS Analysis of Landfill Gas and Records	Periodic/ Annual	BAAQMD Condition # 876, Part 15	≤1300 ppmv, express as H ₂ S	Continuous	Flare A-2 did not operate during the reporting period.
Heat Input	BAAQMD Condition # 876, Parts 11, 18c, 18e, and 18f	Gas Flow Meter and Records	Periodic / Continuous, Monthly	BAAQMD Condition # 876, Parts 5	≤86.4 MM BTU per day and ≤31,536 MM BTU per year (applies to A-2 landfill Gas Flare only)	Continuous	Flare A-2 did not operate during the reporting period.
NO _x	BAAQMD Condition # 876, Parts 16d and 18i	Source Tests and Records	Annual	BAAQMD Condition # 876, Parts 6	≤30 ppmv of NO _x , corrected to 15% O ₂ , dry (applies to A-2 Landfill Gas Flare only)	Continuous	Flare A-2 did not operate during the reporting period.
CO	BAAQMD Condition # 876, Parts 16d and 18i	Source Tests and Records	Annual	BAAQMD Condition # 876, Parts 7	≤ 83 ppmv of CO, corrected to 15% O ₂ , dry (applies to A-2 Landfill Gas Flare only)	Continuous	Flare A-2 did not operate during the reporting period.

SHORELINE AMPHITHEATRE

TITLE V SEMI-ANNUAL MONITORING REPORT

Site: Shoreline Amphitheatre	Facility ID#: A2561
Permitted Unit: A-1 – Carbon Adsorption System	Reporting Period: from 06/01/2022 through 11/30/2022

Type of Limit or Criteria	Monitoring Requirement Citation	Parameters Monitored	Monitoring Frequency	Citation of Limit	Limit	Compliance Summary	Corrective Actions Taken
NMOC	BAAQMD 8-34-501.11 and 8-34-509 and BAAQMD Condition # 876, Parts 14 and 18g	Periodic Monitoring of A-1 Exhaust with a Portable Analyzer and Records	Periodic / Event Basis (at least once for every 16 hours of A-1 operation; after conc. Is > 90 ppm, at least once for every 8 hours of A-1 operation)	BAAQMD 8-34-301.4	98% removal by weight OR < 120 ppmv, dry basis @ 3% O ₂ , expressed as methane (applies to A-1 Carbon Adsorption System only)	Continuous	Note: The A-1 Carbon Adsorption system was permanently decommissioned on November 30, 2021 per the ATC that was issued by the BAAQMD on February 1, 2021.
NMOC	BAAQMD Condition # 876, Parts 14 and 18g	Periodic Monitoring of A-1 Exhaust with a Portable Analyzer and Records	Periodic / Event Basis (at least once for every 16 hours of A-1 operation; after conc. Is > 90 ppm, at least once for every 8 hours of A-1 operation)	BAAQMD Condition # 876, Parts 13	Replace carbon when exhaust concentration exceeds 108 ppmv, dry basis @ 3% O ₂ , expressed as methane (applies to A-1 Carbon Adsorption System only)	Continuous	N/A

SHORELINE AMPHITHEATRE

TITLE V SEMI-ANNUAL MONITORING REPORT

Site: Shoreline Amphitheatre	Facility ID#: A2561
Permitted Unit: S-3 – Diesel Engine	Reporting Period: from 06/01/2022 through 11/30/2022

Type of Limit or Criteria	Monitoring Requirement Citation	Parameters Monitored	Monitoring Frequency	Citation of Limit	Limit	Compliance Summary	Corrective Actions Taken
Opacity	None	N/A	No monitoring requirement	BAAQMD 6-1-303	Ringelmann No.2 for <3 minutes/hour	Continuous	N/A
FP	None	N/A	No monitoring requirement	BAAQMD 6-1-310	≤0.15 grains/dscf	Continuous	N/A
SO ²	None	N/A	No monitoring requirement	BAAQMD 9-1-301	Property Line Ground Level Limits: ≤0.5 ppm for 3 minutes and ≤0.25 ppm for 60 minn and ≤0.05 ppm for 24 hours	Continuous	N/A
Liquid Fuel Sulfur Content	BAAQMD Condition # 19912, Part 4f	Vendor certification	Periodic / Event Basis	BAAQMD Regulation 9-1-304	Fuel Sulfur Limit: 0.5% by weight	Continuous	N/A
Liquid Fuel Sulfur Content	BAAMQD Condition # 19912, Part 4f	Vendor certification	Periodic / Event Basis	CCR Title 17, Section 93115.5 9b) and CCR Title 13, Section 2281 (a)(1-5)	Standby Engines must use CARB Diesel Fuel or other CARB Approved Alternative Fuel, which has Fuel Sulfur Limits of: ≤500 ppmw of S (≤0.05% S, by weight) or ≤15 ppmw of S (for fuel sold after 6/1/06)	Continuous	N/A
Operating Hours	BAAQMD Regulation 9-8-502.1 and 9-8-530 and BAAQMD Condition # 19912, Parts 3 and 4a-d and CCR Title 17, Section 93115.10(e)(1) & (g)(1)	Meter to record either operating hours or fuel usage and records	Periodic / Continuous, Monthly	BAAQMD Condition # 19912, Part 1 and CCR Title 17, Section 93115.6(b)(3)(A)(1)(a)	Operating Hours for Reliability-Related Activities: ≤20 hours in a calendar year	Continuous	N/A

SHORELINE AMPHITHEATRE
TITLE V SEMI-ANNUAL MONITORING REPORT

SITE: SHORELINE AMPHITHEATRE	FACILITY ID#: A2561
REPORTING PERIOD: <i>from</i> 06/01/2022 <i>through</i> 11/30/2022	

CERTIFICATION:

I declare, under penalty of perjury under the laws of the State of California, that, based on information and belief formed after reasonable inquiry, all information provided in this reporting package is true, accurate, and addresses all deviations during the reporting period:

Signature of Responsible Official

Date

Jessica Hill
Name of Responsible Official

General Manager, Shoreline Amphitheatre
Title of Responsible Official

Mail to:

*Director of Compliance and Enforcement
BAAQMD
375 Beale Street, Suite 600
San Francisco, CA 94105
Attn: Title V Reports*