

ASBESTOS REGULATION



ASBESTOS REGULATION

The Air District controls asbestos emissions through:

- Regulation 11, Rule 2 (Asbestos Demolition, Renovation and Manufacturing)
- Asbestos Airborne Toxic Control Measure (ATCM) for Construction, Grading, Quarrying, and Surface Mining Operations (California Code of Regulations Title 17, Section 93105)

The Airborne Toxic Control Measure places requirements on the following activities in areas where naturally occurring asbestos (NOA) is likely to be found:

- Road construction and maintenance
- Construction and grading
- Quarrying and surface mining

Regulation 11, Rule 2 requires special procedures and work practices that must be followed during any project involving the removal of asbestos-containing material. Failure to meet these requirements may result in penalties, or civil or criminal prosecution. Regulation 11, Rule 2 requirements can be found at: www.baaqmd.gov.



BAY AREA
AIR QUALITY
MANAGEMENT
DISTRICT



ASBESTOS IN THE HOME

The use of asbestos has declined significantly since the early 1970s, as its health risks have become more widely known. However, homes may still contain asbestos in a variety of forms, from sprayed-on fireproofing or plaster on ceilings, walls, and support beams to thermal insulation on furnaces and duct-work.

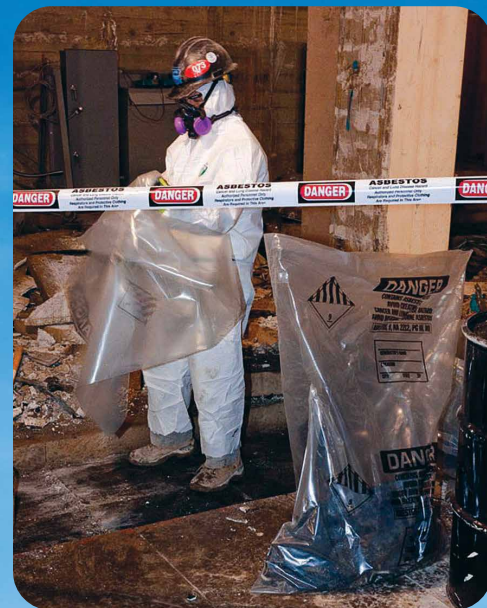
Usually, asbestos-containing materials are dangerous only if they are damaged or disturbed. If you have an acoustic ceiling that contains asbestos, for example, you should not drill holes in it, and you should be careful not to disturb it while changing light bulbs or during any other activities that could disturb the ceiling.

Do not dust, sweep, or vacuum particles suspected of containing asbestos. This could disturb the tiny asbestos fibers and make them airborne. These fibers are so small that they cannot be seen, and will pass through normal vacuum cleaner filters and re-enter the air. Certified asbestos workers use specially designed HEPA air filtering devices and wet method removal practices to control asbestos fibers.

If you think you have an asbestos product in your home, it is best to leave it undisturbed, unless the material is crumbling or needs major repair or removal. If the material is crumbling, or if you plan to remodel or need to install a new furnace or plumbing, then you should hire a contractor to determine if there is any asbestos involved.



MITIGATING EXPOSURE

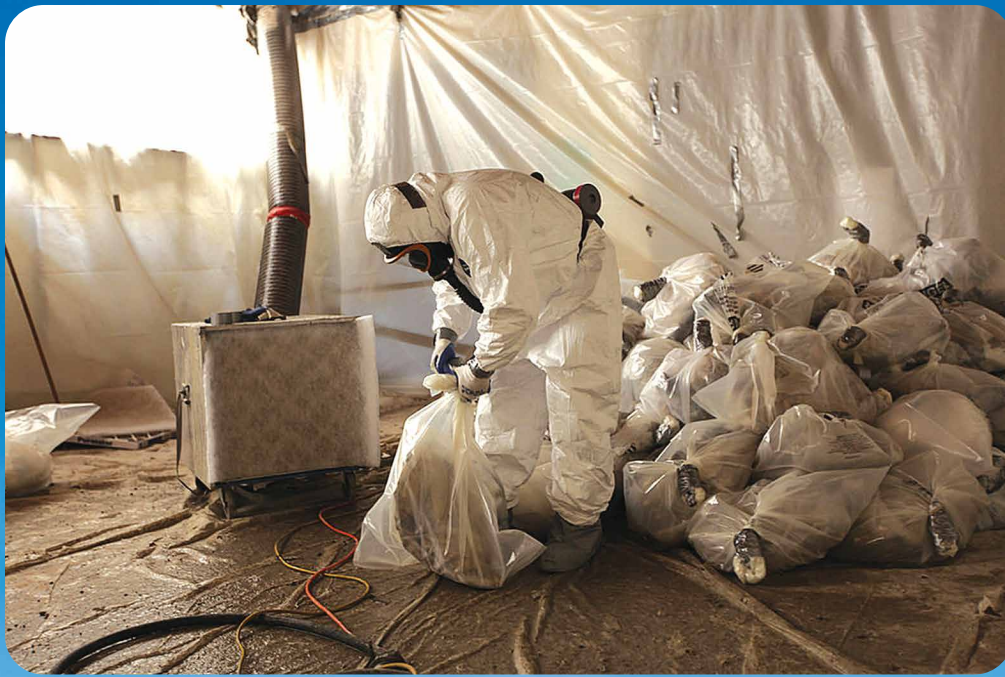


Regulation 11, Rule 2 requires that a survey must be performed to determine the presence of asbestos prior to beginning any demolition or renovation activity. The survey must be performed by a Certified Asbestos Consultant (CAC) who is certified by the California Division of Occupational Safety and Health (Cal/OSHA). Find a Cal/OSHA certified consultant: www.dir.ca.gov/dosh/asbestos.html

Consumer Products Safety Commission brochure, "Asbestos in the Home": www.cpsc.gov/safety-education/safety-guides/home/asbestos-home

You should not remove asbestos yourself due to the risk of exposing yourself or family to the hazardous microscopic fibers. The only safe approach is to hire a certified asbestos contractor to evaluate your home.





The asbestos contractor can advise you whether the asbestos should be encapsulated, removed or left alone. If only minor repairs are needed in a small area, the contractor may seal the damaged sections by spraying with a heat resistant paint or sealant or by encapsulating the asbestos containing material.

You can find a list of Bay Area certified asbestos abatement contractors online. Asbestos contractors are required to be licensed with the California State Contractor Licensing Board and registered with Cal/OSHA.

Confirm that your contractor is licensed by the California State Licensing Board:

www.cslb.ca.gov/OnlineServices/CheckLicenseII/CheckLicense.aspx

Cal/OSHA: www.dir.ca.gov.

Danger
Asbestos dust

Wear approved
respirator

Wear protective
clothing

HEALTH RISKS

If inhaled, asbestos fibers pose a serious health threat, since they can become permanently lodged in body tissues. Exposure to asbestos has been shown to cause various forms of cancer and asbestosis, a type of chronic lung disease similar to emphysema. Since there is no known safe level of exposure, all asbestos exposure should be avoided, which is particularly important during removal of asbestos insulation.

ABOUT THE AIR DISTRICT

The Bay Area Air Quality Management District is the regional agency responsible for protecting air quality in the nine-county Bay Area, including Alameda, Contra Costa, Marin, Napa, San Francisco, San Mateo, Santa Clara, southwestern Solano, and southern Sonoma counties.



CONTACT US:

**Bay Area Air Quality
Management District**
375 Beale Street, Suite 600
San Francisco, CA 94105

Asbestos Information Desk:
(415) 749-4762

Website:
www.baaqmd.gov

Connect with us:



BAY AREA
AIR QUALITY
MANAGEMENT
DISTRICT

