



BAY AREA
AIR QUALITY
MANAGEMENT
DISTRICT

AGENDA: 5

Fugitive Dust Regulatory Analysis and Recommendations

Stationary Source and Climate Impacts Committee
April 12, 2023

Eric Lara
Senior Air Quality Specialist
Rules & Strategic Policy
elara@baaqmd.gov

Presentation Outcome



To inform the committee on the findings of the Fugitive Dust White Paper and provide recommendations for future actions.

Presentation Outline



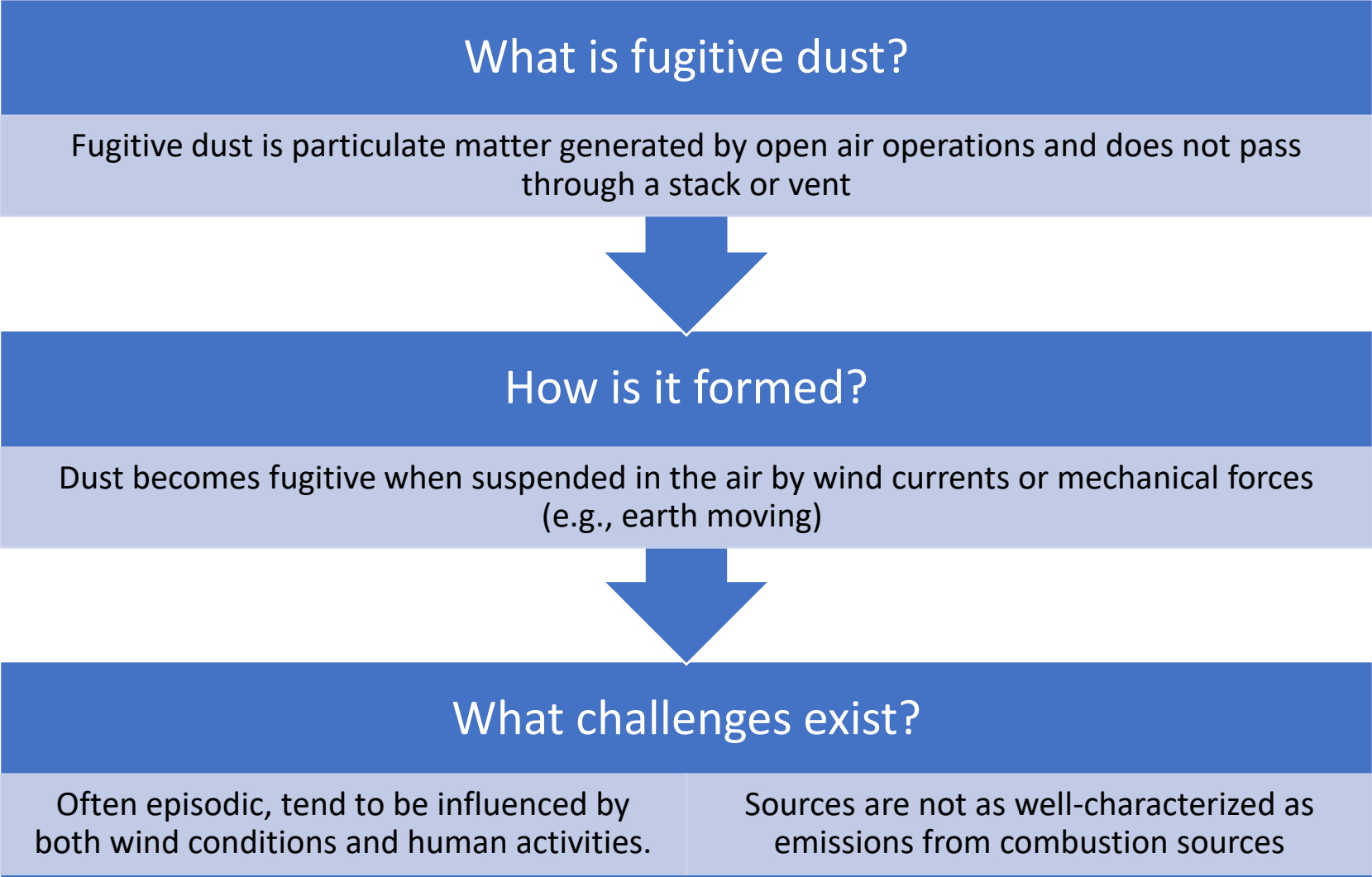
- Background on Fugitive Dust
- Current Rules
- Gap Analysis
- Recommendations
- Next Steps
- Feedback and Questions

Presentation for Information Only



- None; informational item

Background



Sources of Fugitive Dust



Feedback



Community Perspectives

- Community Advisory Council
- Community Stakeholders
- AB 617 Committees



Scientific & Regulatory Perspectives

- Advisory Council
- Clean Air Act



Dust Concerns – Exposures and Health Impacts



- PM is a significant health concern
- Many fugitive dust sources located in impacted communities
- More localized reductions are needed

Overview of Current PM Rules for Fugitive Dust



Regulation 6: Common Definitions and test methods

- General administrative requirements and standard procedures

Rule 6-1: General Requirements

- Emission rates, emission concentrations, and visible emissions limits

Rule 6-6: Prohibition of Trackout

- Requirements for prohibition of trackout

Rule 6-4

- Metal Recycling and Shredding

Rule 12-13

- Foundry and Forging Operations

CARB NOA ATCM

- Naturally Occurring Asbestos

Gap Analysis of Fugitive Dust Rules



Staff reviewed existing regulatory and programming measures used to control PM emissions, at the following jurisdictions due to their experience with dust suppression:

- California Air Resources Board (CARB)
- Clark County (NV) Department of Environment and Sustainability (DES)
- Imperial County Air Pollution Control District (ICAPCD)
- Maricopa County Air Quality Department (MCAQD)
- Sacramento Metropolitan Air Quality Management District (SMAQMD)
- South Coast Air Quality Management District (SCAQMD)

Recommendations



Amend Regulation 6: Particulate Matter

Burden of Proof and Locations

- Define fugitive dust as observable dust crossing the property line
- Improve stabilization, BACM/BMPs, and trackout requirements
- Requirements for large roadway or construction projects
- Dust control plans for specific high-risk projects or sites



Improve
Enforceability

Permitted Facility Restrictions

- Reduce PM emissions limit
- Reduce PM process weight limits
- Permitting and/or registration requirements for large dust-generating operations



Strengthen
Requirements

Monitoring and Data

- Dust control plans with fenceline monitoring
- Wind and vehicle speed monitoring, BACM, and recordkeeping
- Daily self-inspection reports, adequately wetted determinations



Explore Feasibility

Recommendations (cont.)



Fees

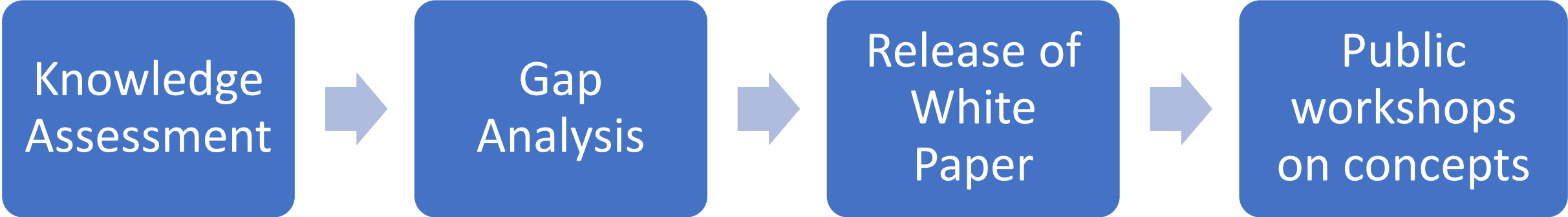
- Pursue regulatory amendments for Rule 3: Fees


PM Methodologies *

- Pursue regulatory amendments for Rule 2-1: General Requirements

* Future regulatory item pending prioritization

Next Steps



 We are here

Feedback Requested



- Questions and Comments



BAY AREA
AIR QUALITY
MANAGEMENT
DISTRICT

AGENDA: 6

Updated 2023 Stationary Source and Climate Impacts Committee Work Plan

Stationary Source and Climate Impacts Committee
April 12, 2023

Greg Nudd
Deputy Air Pollution Control Officer
gnudd@baaqmd.gov

Presentation Outcome



- The Committee will review and discuss the updated work plan for meetings in 2023.
- This is an informational item for discussion.

2023 SSCI Work Plan



- **April - May**
 - Air District Statutory Authorities
 - Fugitive Dust White Paper Recommendations
 - Bay Area Healthy Homes Initiative
 - Submitting Rules into the State Implementation Plan
 - **Discussion on Prescribed Burning in the Bay Area**

2023 SSCI Work Plan (cont'd)



- **June - July**

- Rules mid-year review
- Update on Incident Response Monitoring
- Refinery Community and Fenceline Monitoring
- Sources Causing Particulate Matter Exposure (InMAP Results)
- Overview of How the Air District Conducts Socioeconomic Analyses
- Overview of Permitting Timelines

2023 SSCI Work Plan (cont'd)



- **September - October**

- Rule 8-8: Refinery Wastewater
- Rule 8-18: Refinery Heavy Liquid Leaks
- Metal Recycling and Shredding Operations

- **November - December**

- Priority Control Measures in the Richmond-North Richmond-San Pablo CERP
- Health Impacts of Wood Smoke and Possible Policy Response

2023 SSCI Work Plan (cont'd)



- **Pending**

- Indirect Source Rules (ISR)?
- Rule 11-18: Reduction of Risk from Air Toxic Emissions at Existing Facilities
- Rule Implementation
- Information on Just Transition



Questions?



BAY AREA
AIR QUALITY
MANAGEMENT
DISTRICT

AGENDA: 7

Update on the Bay Area Healthy Homes Initiative

Stationary Sources and Climate Impacts Committee
April 12, 2023

Idania Zamora, PhD
Assistant Manager
Planning and Climate Protection
izamora@baaqmd.gov

Presentation for Information Only

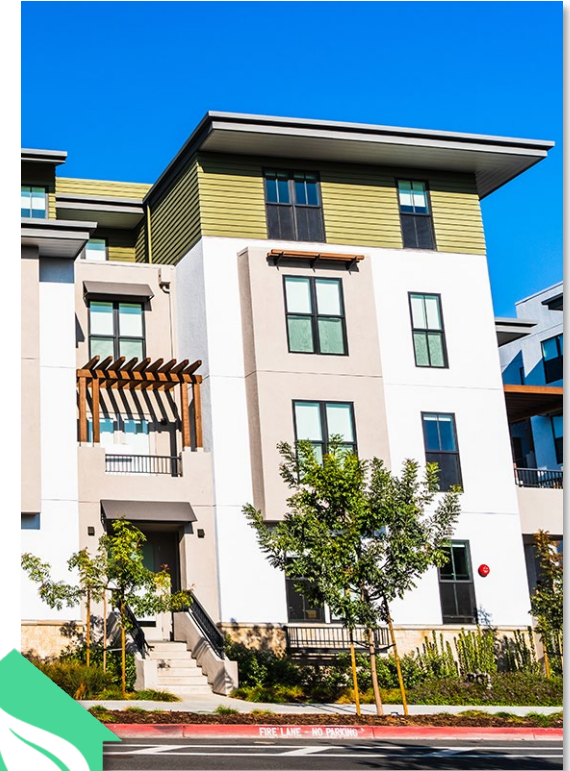


- No action required

Outline



- Motivation
- Bay Area Healthy Homes Initiative
 - Program overview
 - Partners and roles
 - Pathways and services
- Implementation
 - Program infrastructure
 - Recruitment update
 - Case study
 - Tracking progress



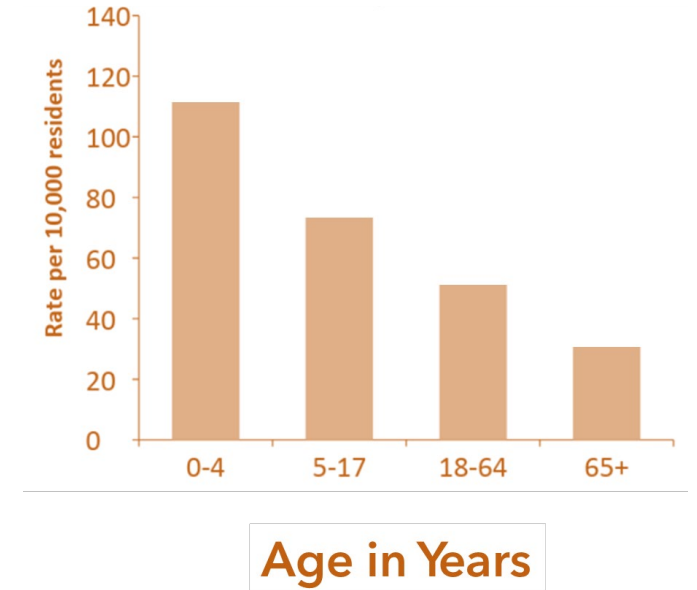
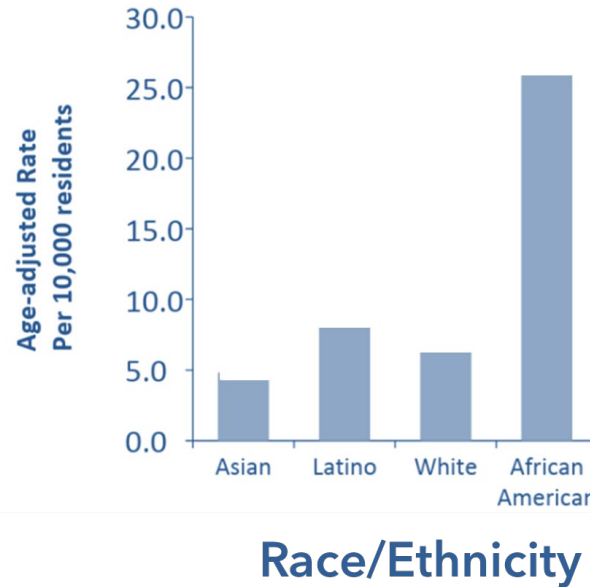
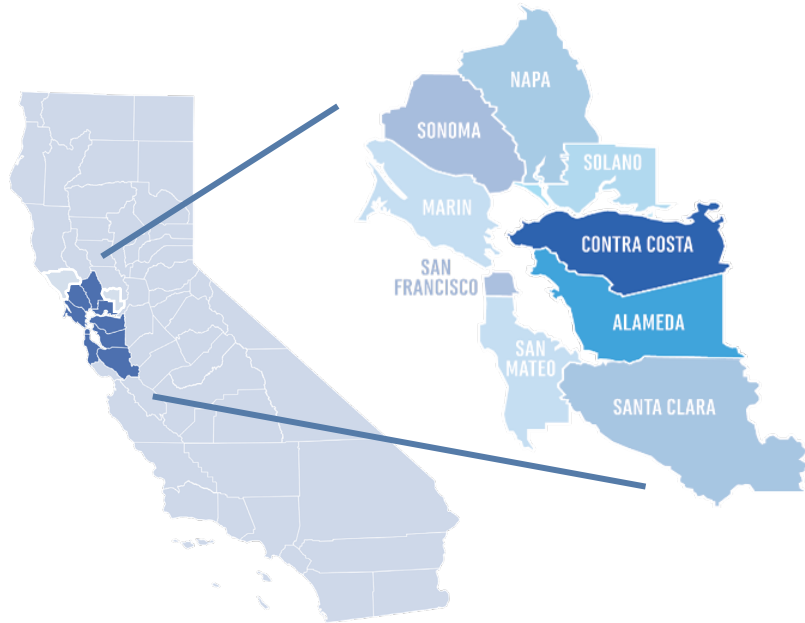


Rising Asthma Rates are a Growing Health and Equity Issue

In the San Francisco Bay Area, asthma rates in communities overburdened by air pollution are **disproportionately high and increasing.**

Asthma is more prevalent among people of color, children, and the poor.

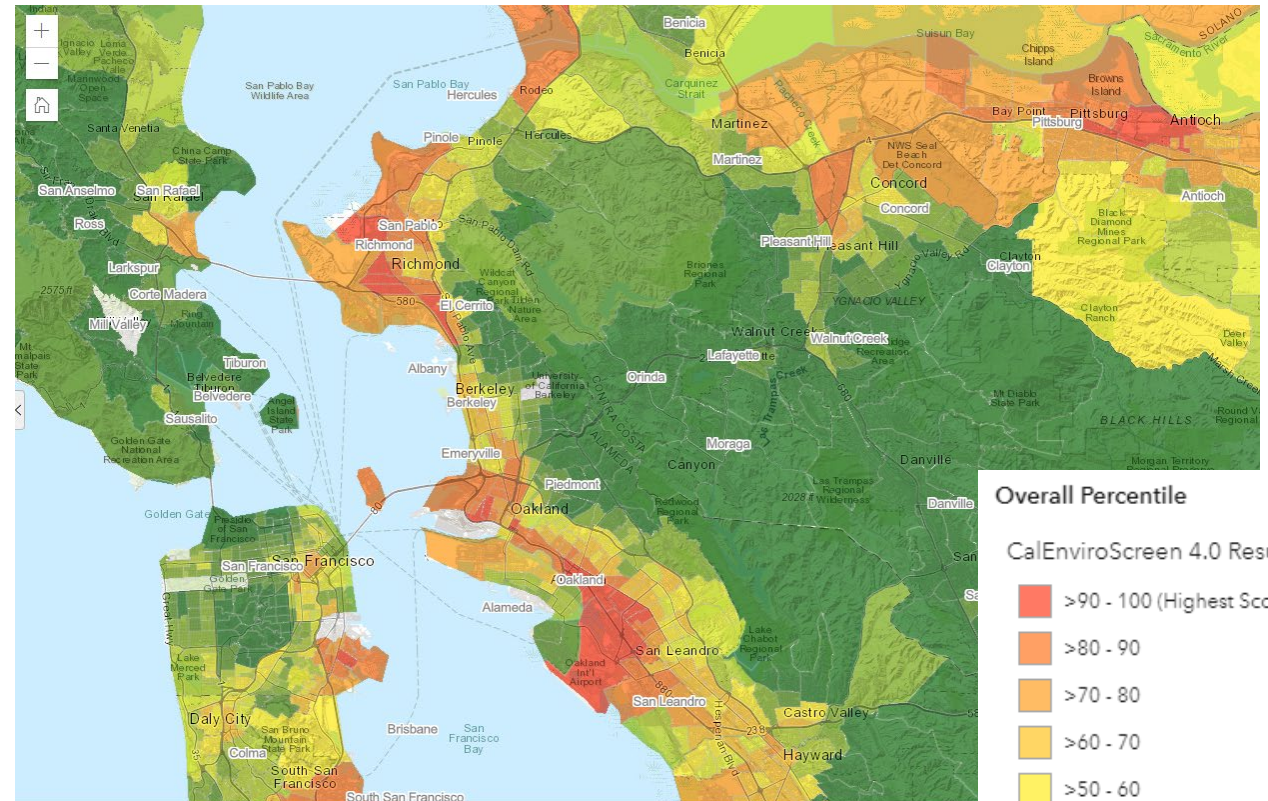
Contra Costa County Asthma Hospitalizations



Source: Contra Costa Health Office



Overburdened communities are also more vulnerable to climate impacts



Cumulative Impacts in California

Source: CalEnviroScreen 4.0

BAY AREA **HEALTHY** **HOMES** INITIATIVE



seeks to improve health outcomes and climate resilience in overburdened communities

Program integrates services through a **partnership to serve clients most impacted by asthma and air pollution**

Contra Costa County Asthma Mitigation Pilot (AMP Pilot) (2018)

- \$722k Total (Air District: 195k)
- asthma patients

Bay Area Healthy Homes Initiative (BAHHI) (2021)

- \$2M grant from VW Settlement
- focus on traffic-related air pollution
- asthma patients and residents

Partners and Roles



REGIONAL
AGENCIES

Bay Area Air Quality Management District (BAAQMD) secured \$2M grant and leads program coordination and oversight

Bay Area Regional Energy Network (BayREN) leverages network to conduct outreach and layer incentives

LOCAL
GOV'T

Contra Costa and Alameda County Health Departments lead the home asthma care, education, and trigger assessments

LOCAL
NGO

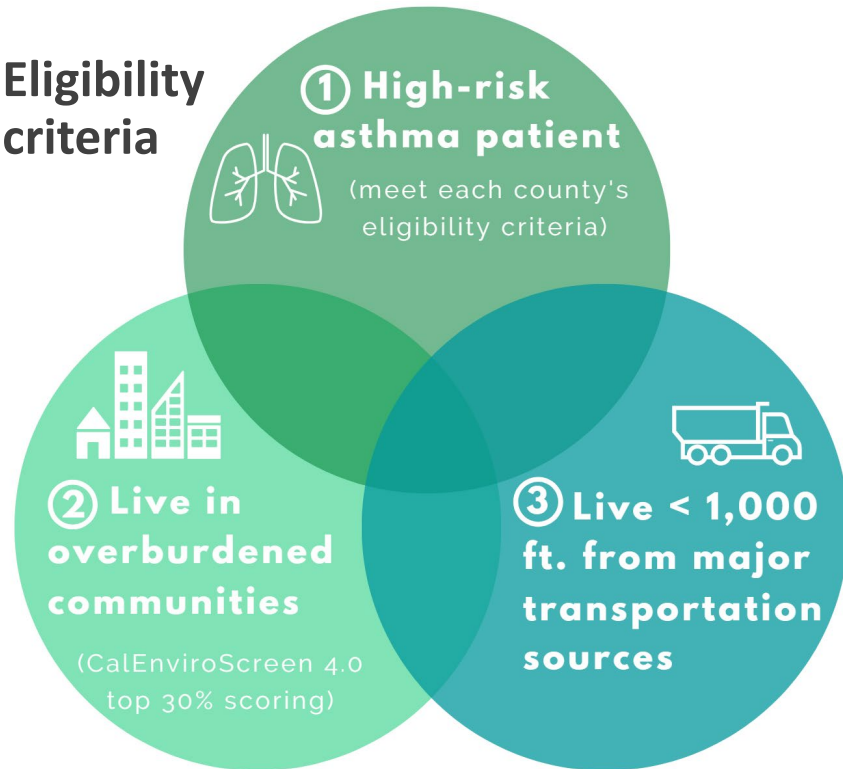
Association for Energy Affordability (AEA) assesses and implements home retrofits for both counties; conducts indoor air quality monitoring



Participant Pathways

Asthma patients

»» Eligibility criteria



Contra Costa County

- Medi-Cal patients with uncontrolled moderate to severe asthma
- ~1,500 adults and children eligible
- *County Health Services* target: 70 patients

Alameda County

- Patients 0 – 18 years old with uncontrolled asthma (Medi-Cal or Alliance)
- ~5,000 children eligible
- *Asthma Start* target: 35 patients

a healthier and more resilient person

- **In-home asthma services are provided for high-risk asthma patients** by a community health worker.
- **Local health departments can provide expanded services** using BAHHI funding.

»» Asthma assessment

- Asthma action plan, in coordination with primary care provider
- Asthma condition evaluation, before and after program

»» Asthma consumer supplies

- Green cleaning supplies
- Non-toxic pest management
- Hypo-allergenic bedding
- Inhaler spacer

»» Education

- Medication usage training
- Asthma trigger understanding
- Air pollution and asthma (e.g., protection against wildfire smoke)

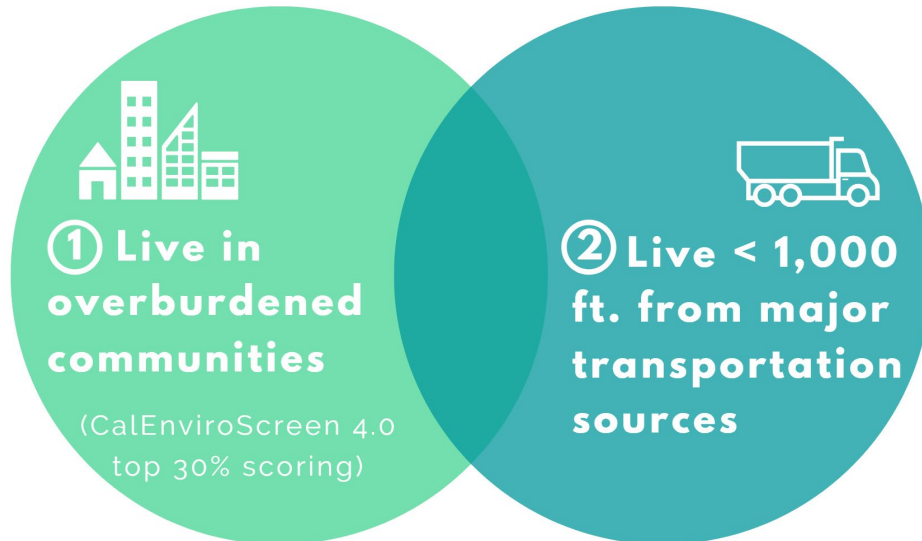


Participant Pathways(cont.)



Residents

»» Eligibility criteria



Contra Costa and Alameda County

- Multi-family buildings
- ~40,000 buildings eligible (~5,000 with 4+ units)
- AEA target:
 - 750 – 1,000 resident units
 - 5 – 15 buildings
- Indoor air quality monitoring at 20% of homes
 - Pollutants: particulate matter (PM), nitrogen oxides (NO_x), carbon monoxide (CO), carbon dioxide (CO₂), ozone (O₃), formaldehyde and total volatile organic compounds (VOCs)

a healthy, efficient and climate resilient home

Home assessment determines **home retrofits needed for patients and residents. Program matches clients' needs with eligible funding sources** and uses BAHHI funds to complement.

»» Remove Health Triggers

Address moisture (e.g., mold removal), allergens, and irritants



»» Mitigate Pollution Exposure

e.g., window replacements, enhanced air filtration, building envelope improvements



»» Increase Energy Efficiency

Home electrification (e.g., heat pump, induction stove) and insulation



Implementation



Program infrastructure

- Program design and coordination
- Technical support
 - Eligibility Criteria Map
 - Staff training
- Education, outreach and resources
 - Educational materials (e.g., wildfires)
 - Clean Air Filtration program filters
 - BAHHI website
 - AB617 Communities

baaqmd.gov/bahhi



Bay Area Healthy Homes Initiative Eligibility Criteria Map

To make it easier to check your eligibility for the Residential Pathway, we have mapped out program-eligible areas. The BAHHI Eligibility Map allows you to enter the home or building's address to see if its location falls within these program-eligible areas.

BAHHI Eligibility Map

BAY AREA HEALTHY HOMES

- BAHHI Program Areas
- BAHHI Program Counties

PIN LOCATIONS

- Eligible Location Pins (0)
- Not Eligible Location Pins (0)

Enter address to pin... **Pin**

-- OR --

Implementation (cont.)



Program infrastructure

- Program staffing
 - Community health workers, technical staff and support staff hired
- Data protocols
- Targeted outreach
 - Eligible asthma patients (Health departments)
 - Building owners (BayREN / StopWaste)
- Challenges



Implementation (cont.)



Recruitment update

Metrics	Asthma Patients	
	AMP Pilot	BAHHI
Enrolled in program <i>(vs. target)</i>	<p>120 enrolled patients <i>(out of 150)</i></p>	<p>34 enrolled patients <i>(out of 105)</i></p>
Invited to participate	850	150
Received one or more asthma visits	120	30
Home assessments (virtual)	66	17
Home assessments (on site)	17	3
Received or in-progress with retrofits	4	0

Implementation (cont.)



Case study

- Adult female, East County
- All asthma visits completed
- Home retrofits (Cost: ~\$13,000)
 - Carpet removal / floor installation
 - Bathroom ventilation
 - Duct replacement and sealing
 - Attic insulation
 - Weatherstripping



Implementation (cont.)



Tracking progress

Program goals	Ongoing metrics
Improve health outcomes for high-risk asthma patients	<ul style="list-style-type: none">• Patients who complete all asthma visits• Initial vs. final Asthma Control Test results
Reduce cumulative air pollution exposure for all program participants	<ul style="list-style-type: none">• Home assessments• Home retrofit measures (<i>health-related</i>)• Pre- and post-retrofit indoor monitoring data
Improve participant homes' energy efficiency and reduce their energy costs	<ul style="list-style-type: none">• Home retrofit measures (<i>energy efficiency</i>)• Energy bills savings
Determine program scalability	<ul style="list-style-type: none">• Cost effectiveness• Challenges and potential solutions

BlocPower & Bay Area Air Quality Management District



April 12th, 2023

MISSION:

GREENER, HEALTHIER,

SMARTER BUILDINGS

FOR ALL

Our Approach

**COMMUNITY CENTERED
APPROACH**

**TECHNOLOGY AND
DATA**

**PROGRAM MANAGEMENT
FOR CITY, STATE OR
UTILITY**

**Building Electrification
Program & Project Concierge**

**INCLUSIVE
FINANCING**

**PROJECT MANAGEMENT
FOR BUILDING OWNERS**



Building electrification programs and projects powered by software and data

Phase 1

DATA-DRIVEN
PROGRAM
DESIGN



Phase 2

DATA-BACKED
PROJECT
INSTALLATION



HOW BLOCPower MAKES IT HAPPEN

BlocMaps [software](#) for data analysis, visualization, monitoring

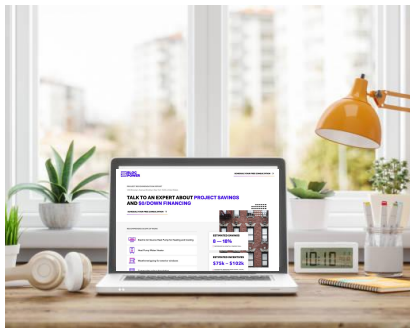
Predictive [machine learning](#) models

Curated building & project [database](#)

Data-based project installation



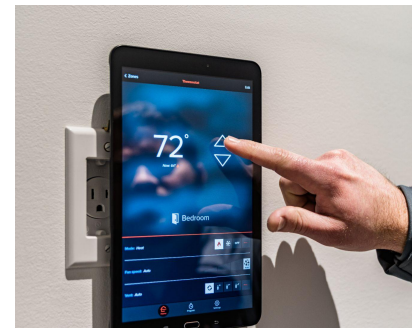
Step One:
**Property Owner
Outreach**



Step Two:
**Individual
Building Analysis**



Step Three:
**Installation &
Construction**



Step Four:
**Monitoring &
Maintenance**

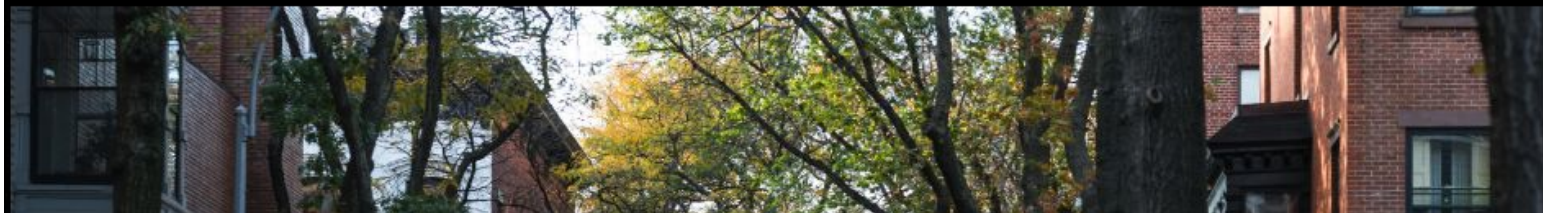
Series B Raise March 1st 2023

Equity Funding: **\$24M**

Debt Financing: **\$130M**



**BLOCPower ANNOUNCES \$150 MILLION FINANCING,
IS HONORED BY VICE PRESIDENT HARRIS, UNVEILS
CORPORATE REBRAND**



Bay Area Partnerships



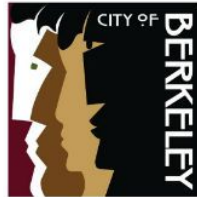
**60 LMI Building
Retrofits in 2023**



**10,000 Building
Retrofits by 2030 +
Workforce Development**



**250 Building Retrofits by
2025 + Workforce
Development**



**2 LMI Home
Retrofits + Community Outreach**



Lawrence Berkeley
National Laboratory

**2 Oakland Church
Retrofits**

National Partnerships



**\$150M Workforce
Development Program:
1,700 individuals
affected**

**City-wide building
electrification by 2030**

**Software + Lead
generation**

**Workforce
Development**



**200 Building Retrofits by
2025 + Health
Measurements**

**CITY OF
CAMBRIDGE**

**Software + 15
building retrofits**

Other Geographies

Atlanta, GA
Augusta, GA
Macon, GA
Chicago, IL
Rural America



Community based approach centers local needs

Community Advisory Board: A group of local community members who are trusted by building owners, decision-makers and property managers and can:

1

Provide feedback on existing outreach strategies

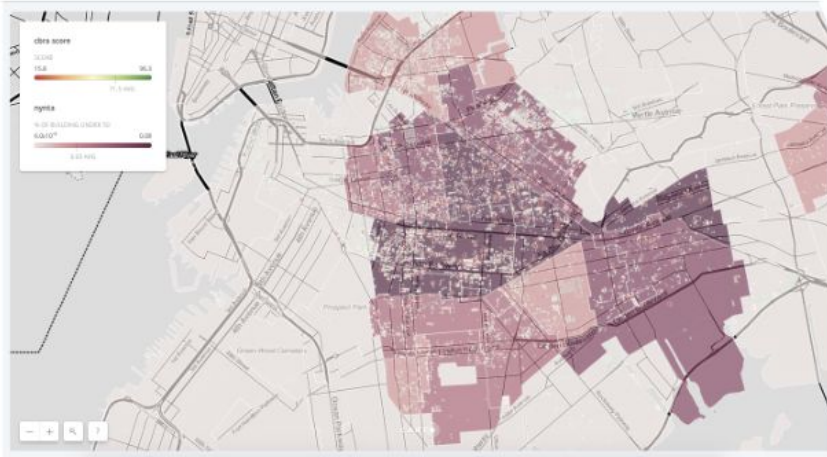
2

Conduct community engagement activities

3

Refer applicable building owners to the program

Case Study: BlocPower “Retrofit NYC” program



#1

Implementer of
retrofits in NYC

631

Projects
completed

126%

Share of projects
completed vs. target

67%

Conversion rate
from CAB “top of
funnel” to retrofit



Thank You