



BAY AREA
AIR QUALITY
MANAGEMENT
DISTRICT

AGENDA: 14A

Air District Equity Program – External and Internal Efforts

**Board of Directors Special Meeting/Retreat
January 20, 2021**

**Veronica Eady
Senior Deputy Executive Officer of Policy & Equity
veady@baaqmd.gov**

Presentation Outcome



Improved understanding of equity issues — both externally-facing, i.e., inequitable exposure to air pollution, and internally-facing, i.e., efforts to improve diversity, equity, and inclusion at the Air District

Presentation Outline



- **External Efforts**

- Historical Context
- Community Exposure
- Health Impacts and Costs
- Assembly Bill (AB) 617

- **Internal Efforts**

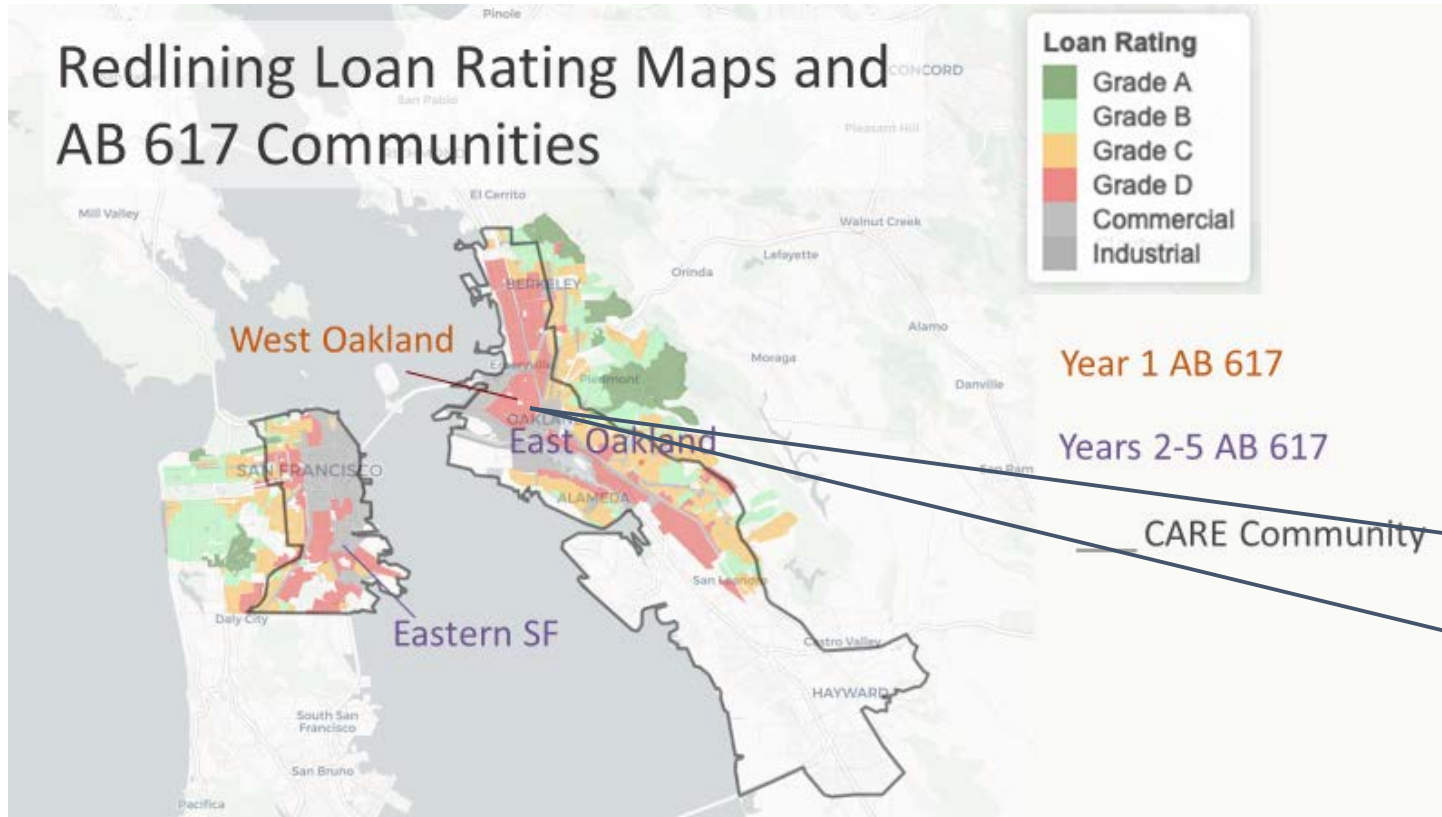
- Demographics
- Diversity, Equity & Inclusion (DE&I)
- Employee Resource Teams
- Employee Engagement Timeline

Presentation Requested Action



None, Informational Only

Historical Context



- History of Redlining
- Overlap with AB 617 and CARE communities

5. INHABITANTS:

a. Type Wage earners, shop-keepers, clerical help

c. Foreign-born Latin, Slavic, 20 %;
(Nationality, etc.)
Oriental and Negro, etc.

e. Infiltration of and Negro, etc.

b. Estimated annual family income \$ 1000-1800

d. Negro Yes ; 40 %;
(Yes or No)

f. Relief families Many ;

Historical Context (cont.)



West Oakland

- History of environmental injustice and exposure

distance for laboring people who live in this area.

4. DETRIMENTAL INFLUENCES. Odors from bay flats; smoke and grime from railroad shops and local industry. Old type houses and cottages, tenement tendencies. Heterogeneous mixture of all races. City taxes too high in proportion to income and value.

5. INHABITANTS:

a. Type <u>Wage earners, shop-keepers, clerical help</u> ;	b. Estimated annual family income \$ <u>1000-1800</u>
c. Foreign-born <u>Latin, Slavic, 20 %</u> ;	d. Negro <u>Yes</u> ; <u>40 %</u> ;
(Nationality etc. <u>Oriental</u>	(Yes or no)
e. Infiltration of <u>and Negro, etc.</u> ;	f. Relief facilities <u>Many</u> ;
g. Population is increasing _____ ;	decreasing _____ ; static. <u>Yes</u>

6. BUILDINGS:

a. Type or types <u>Detached cottages and 2-story homes</u> ;	b. Type of <u>railroad (no) brick foundation</u>
c. Average age <u>35 years</u> ;	d. Repair <u>Poor</u>

7. HISTORY: 5-rm cottages ; SALE VALUES RENTAL VALUES

Historical Context (cont.)

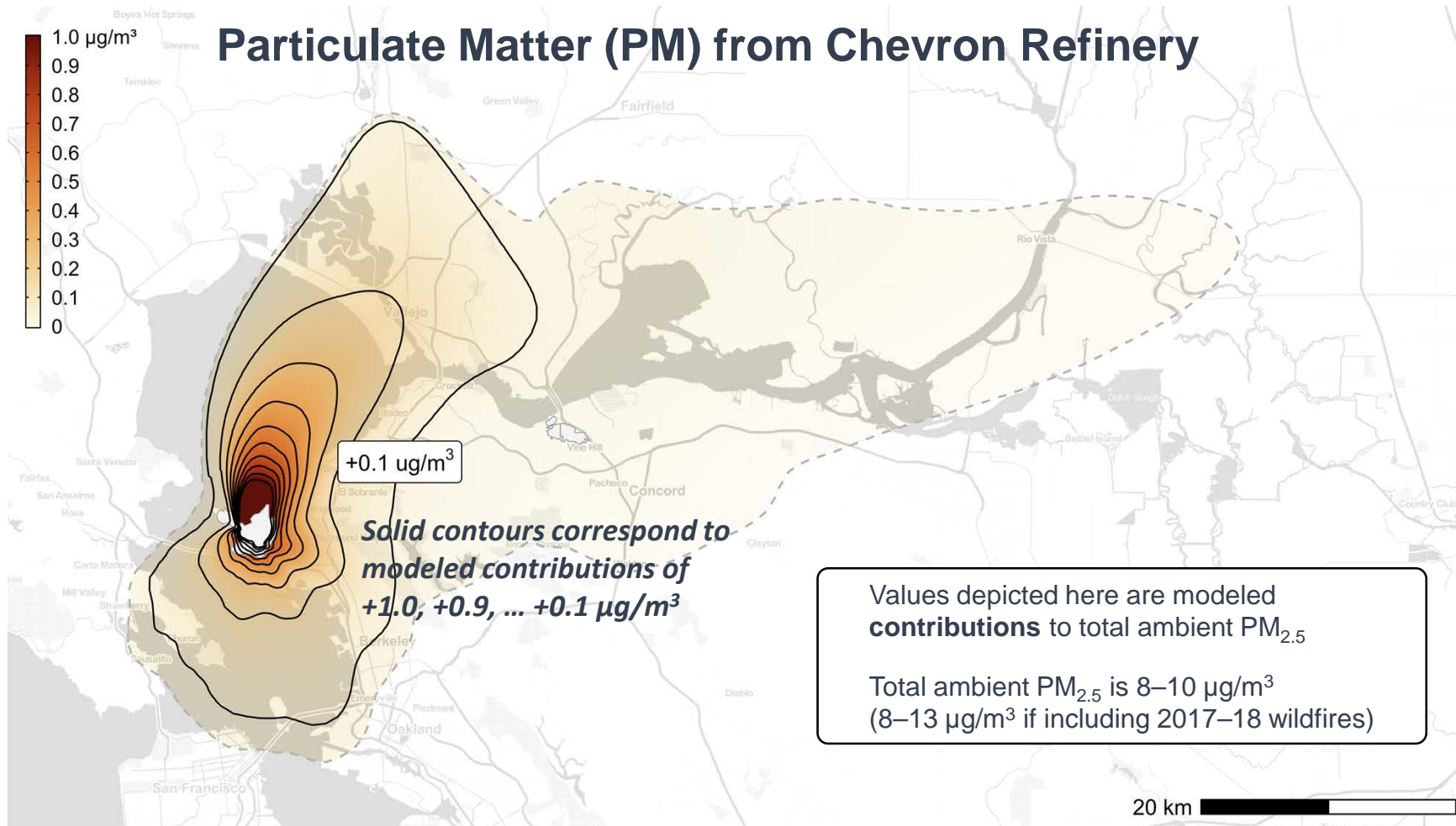


East San Francisco

are provided by the three playfields which adjoin the area. Light and heavy industrial districts completely surround the area, and stockyards and meat packing plants situated nearby are the source of unpleasant odors when the wind is from their direction, which, fortunately, is seldom. A railroad tunnel runs under part of the area. The best climatic conditions in San Francisco are said to exist in this area.

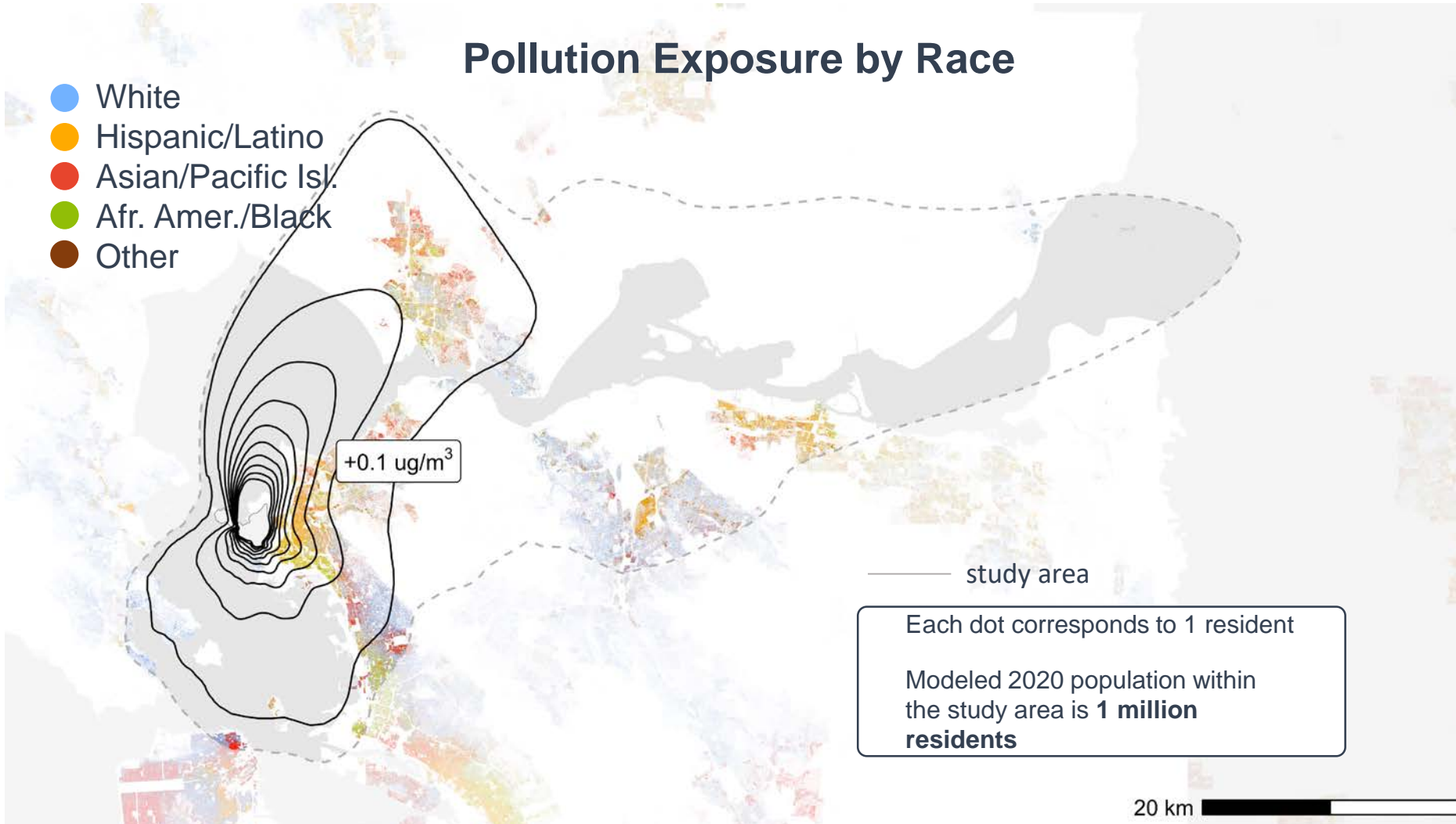
- History of environmental injustice and exposure

External: Community Exposure



- Different communities experience different levels of exposure

External: Community Exposure (cont.)



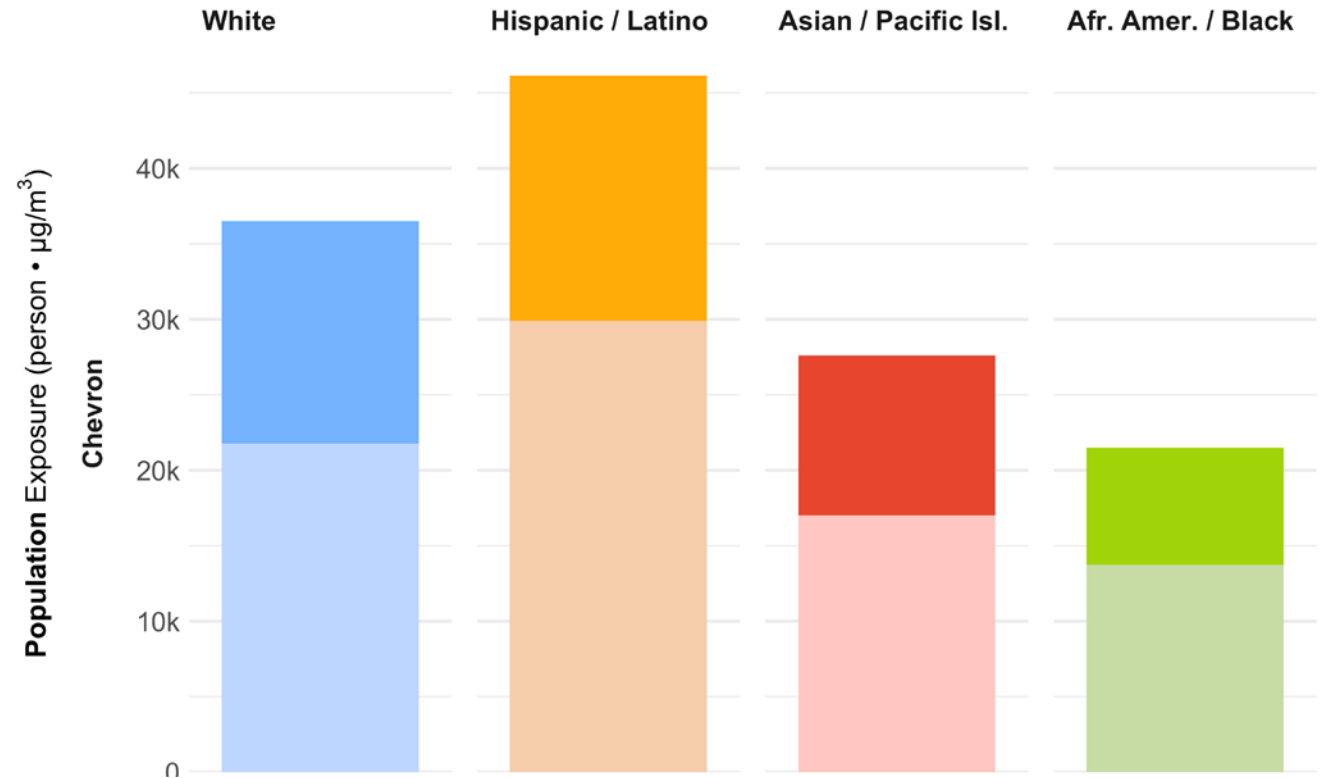
- Different races experience different exposure levels

External: Community Exposure (cont.)



- Hispanic/Latino residents comprise 28% of the population in the study area and 35% of exposure burden
- Afr-Amer/Black: 12% vs 16%
- White: 37% vs 28%
- Asian/Pac. Isl.: 22% vs 21%

Chevron Refinery: Exposure by Race, Total Population

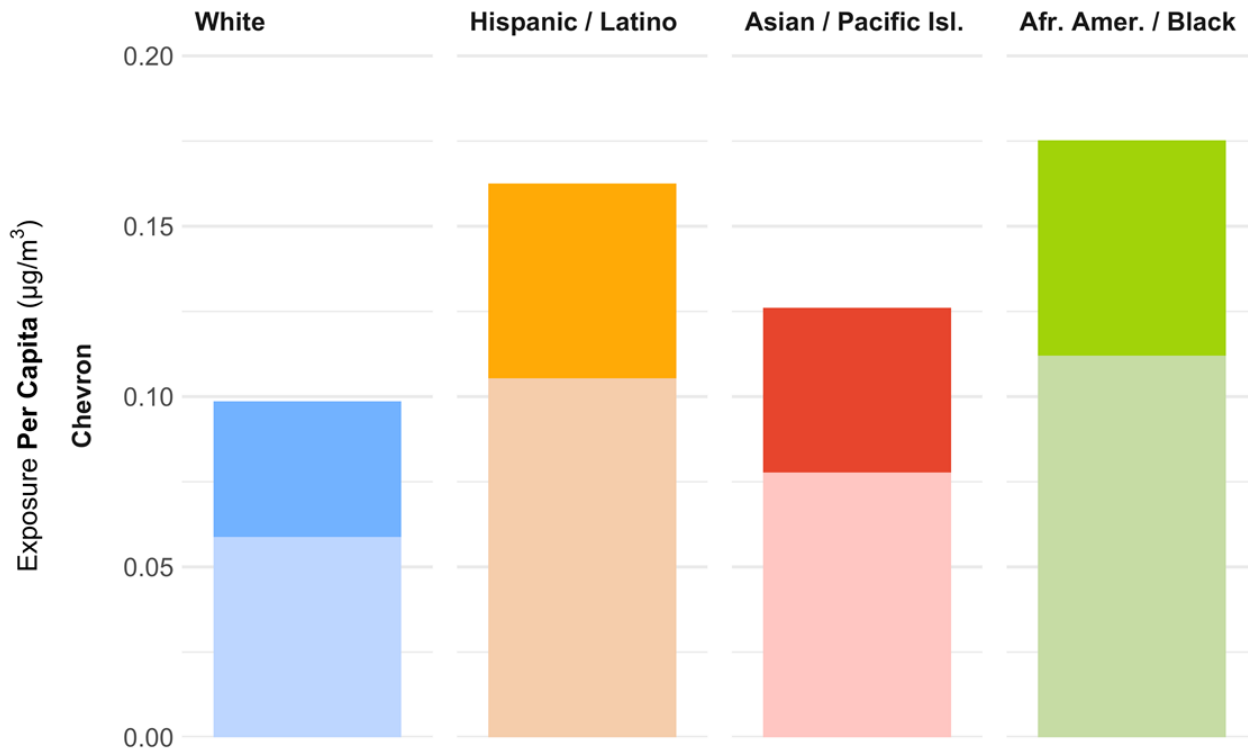


*Fluidized Catalytic Cracking Unit (FCCU) impacts shown in darker colors
Bar heights = total impacts (FCCU + Non-FCCU)*

External: Community Exposure (cont.)



Chevron Refinery: Exposure by Race, Per Capita



FCCU impacts shown in darker colors
Bar heights = total impacts (FCCU + Non-FCCU)

- On average, Hispanic/Latino and African American/Black residents are exposed to more PM_{2.5} from Chevron
- Sources other than the FCCU drive these disparities

External: Health Impacts and Costs



Estimated Baseline Health Impact from Modeled Sources (Annual)		Valuation ¹ (Annual)
Cardiovascular	0.5–4.3 heart attacks 1.0 hospital admissions	\$63k–600k \$47k
Restricted Activity	4,800 days	\$360k
Lost Work	820 days	\$190k
Asthma	200 exacerbations ³ 4 emergency room visits 0.1 hospital admissions	\$12k \$2k \$1k
Respiratory Illness²	140 upper tract ³ 100 lower tract ³ 8 bronchitis ³ 0.2 chronic lung disease	\$5k \$2k \$4k \$5k
Mortality	5.1–11.6 deaths ⁴	\$52.5M–118M



¹ Conventional EPA valuations, in 2015 US dollars

² Other than asthma

³ Subset of pediatric (≤ 18 years)

⁴ Including infant mortality

External: About AB 617



- Requires local districts to work with communities to select all areas in the region that have a “high cumulative exposure burden”
- Areas are then prioritized for community monitoring and/or actions plans



External: About AB 617 (cont.)



- Originated in negotiations of Cap-and-Trade Program
- Responds to ongoing high levels of air pollution in most impacted communities
- Focuses on long-standing environmental justice in communities



External: About AB 617 (cont.)



How Communities Selected

- Community readiness
- High air pollution and high health burdens
- Historical and on-going community and other monitoring/exposure
- Concentration of stationary sources
- Community input
- Socio-economic factors and other public health data available via statewide screening tools



External: Equity in Community



West Oakland

- Center equity in implementation
- Partner with City of Oakland Department of Race and Equity
- Train, support Steering Committee and subcommittees in assessing equity

Richmond-North Richmond-San Pablo

- Move at the speed of trust
- Train staff and Steering Committee on broad equity topics
- Condemn racism and affirm equity, access and inclusion in Charter
- Intentional youth engagement

External: AB 617 Year 2021



Next Community Selection

- Candidate communities: East Oakland, Eastern San Francisco, Vallejo, San Jose
- Develop selection process and criteria; community input throughout

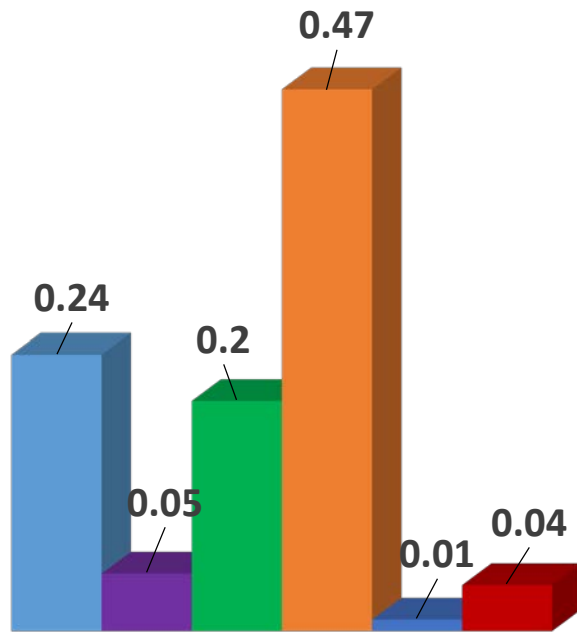
Work in All AB 617 Communities

- Complete hyper-local (Aclima) monitoring
- Build partnerships with community-based organizations and local governments
- Complete early source apportionment and modeling

Internal: Demographics by Race/Ethnicity

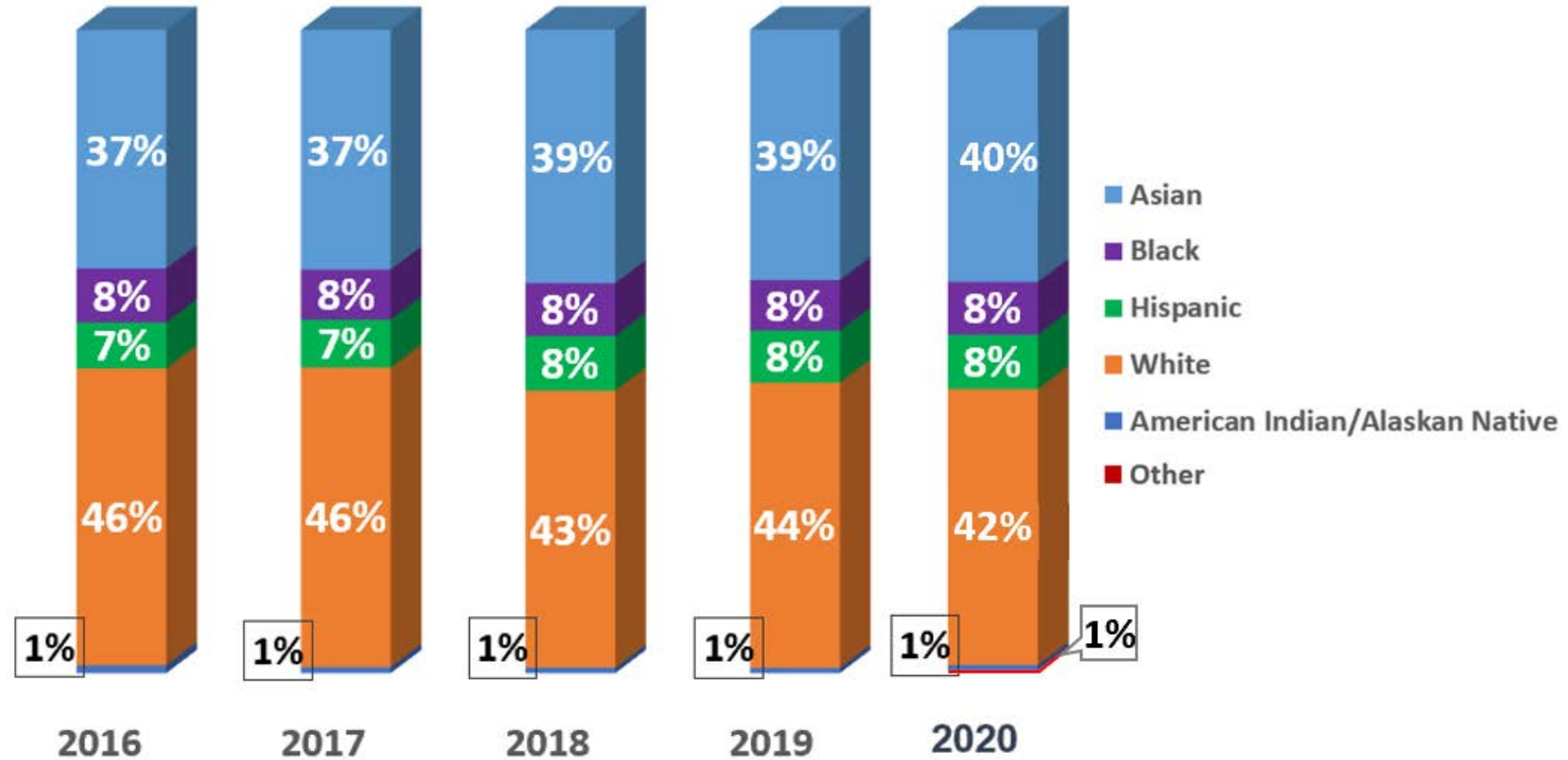


Bay Area



ACS 5 Yr. Ave (Ages 18-64)*

All Employees

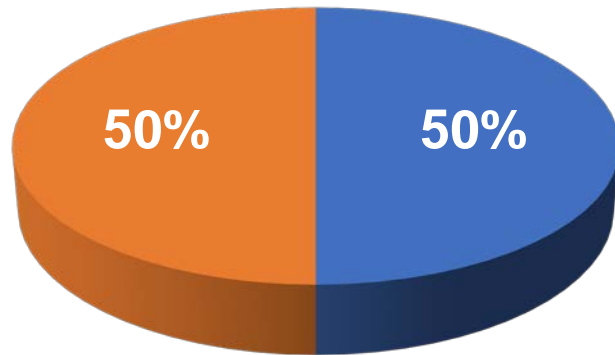


*American Community Survey (ACS) Census Bureau

Internal: Demographics by Gender



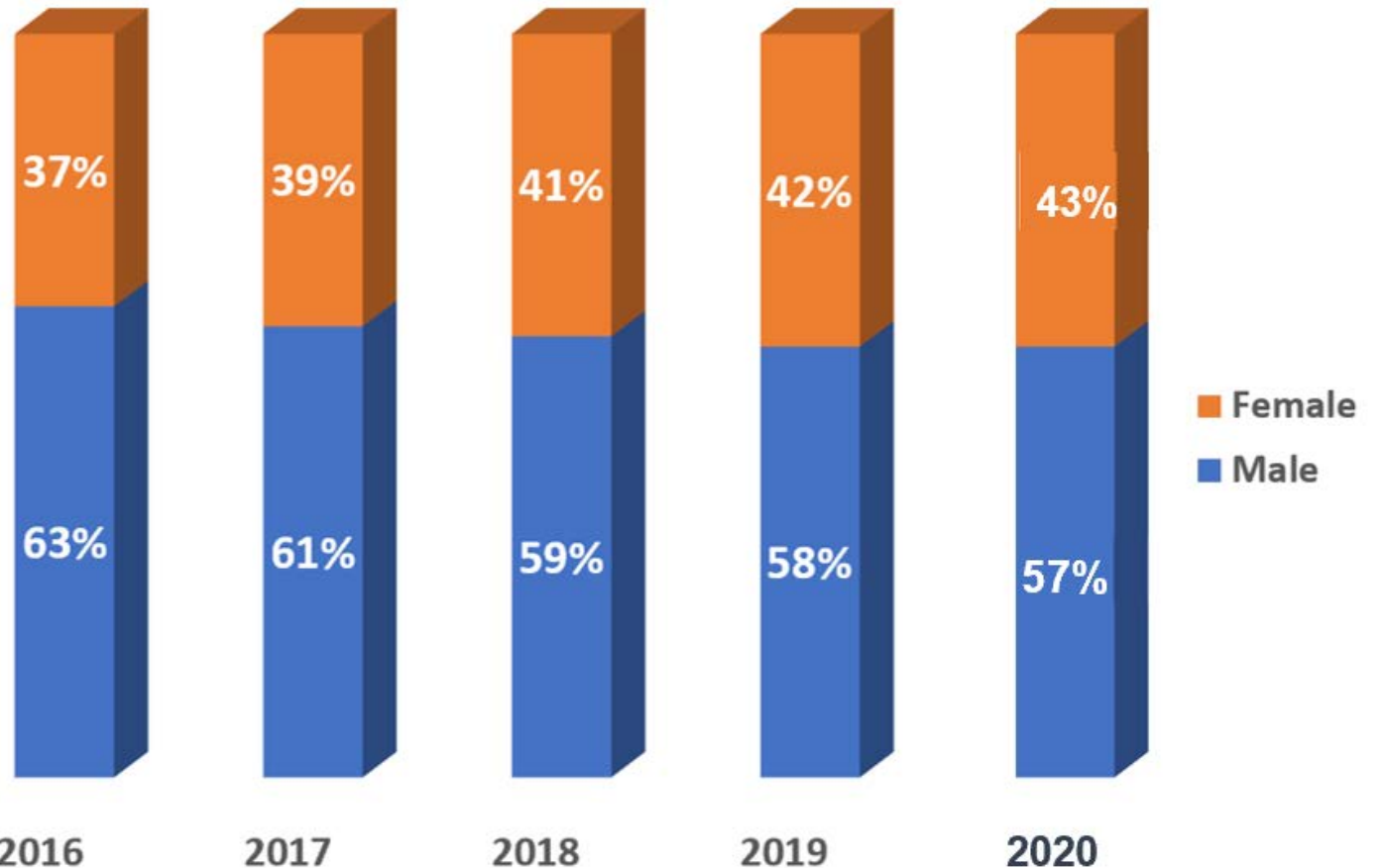
Bay Area



Bay Area Demographics
ACS 5 Yr. Ave (Ages 18-64)*

*American Community Survey (ACS) Census Bureau

All Employees



Internal: Diversity, Equity & Inclusion



Board of Directors' Ad Hoc Committee on Equity, Access, and Inclusion

- Development of Committee Work Plan
- Establish Community Advisory Council
- Continue Regional, State, and National Partnerships



Development of Equity Action Plan

- Alignment of Tools, Direction, and Measure
- Agency-wide Planning



Human Resources Practices and Processes

- Adopting Best Practices in Recruitment and Retention Processes, including Promotional Opportunities
- Co-lead with Human Resources on Employee Engagement and Cultural Assessment



Internal: Diversity, Equity & Inclusion (cont.)



Operationalize Cross Divisional Equity Initiatives

- Launch Equity Resource Team Q1
- Divisional alignment on equity strategies in programs, processes, and initiatives



Continue internal capacity-building of all staff on anti-racism content and advancing equity throughout the agency



District-Wide Implicit Bias and Mitigation Training
January 21, 2021 and February 2, 2021



Internal: Employee Engagement



May 2020



**PROJECT
KICK-OFF**

June/July
2020



**INTERVIEWS and
FOCUS GROUPS**

August
2020



**SURVEY
LAUNCH**

Q3/Q4
2020



**ANALYZE
RESULTS**

Q1-Q3
2021



**PLAN
ACTIONS**

Internal: Employee Resource Teams



- Equity Resource Team
- African American Resource Team (AART)
- Cultural Advisory Team (CAT)
- Remote Work Taskforce
- Innovations Team
- Cultural Heritage Month Teams (Asian American/Pacific Islander, Hispanic/Latinx, Women, and LGBTQ Pride)

Employee Resource Teams are centered on intentionally finding solutions to furthering greater equity and inclusion throughout the agency

Internal: Diversity, Equity & Inclusion



1 Normalize

- Speaker Series
- If Beale St Could Talk Series
- Cultural Events
- Newsletter Content

2 Organize

- Ad Hoc Committee on Equity, Access, and Inclusion
- Employee Resource Teams
- Employee Engagement

3 Operationalize



Normalize

Operationalize

Organize

- Community Equity (AB 617 Work)
- Board of Directors Resolution #2020-8 Condemning Racism and Racial Injustice
- Internal Equity Assessment
- Virtual Diversity Career Fairs
- DE&I Training
- Demographic Analysis



BAY AREA
AIR QUALITY
MANAGEMENT
DISTRICT

AGENDA: 14B

Rulemaking Initiatives

**Board of Directors Special Meeting/Retreat
January 20, 2021**

**Greg Nudd
Deputy Air Pollution Control Officer
gnudd@baaqmd.gov**

Presentation Outcome



Improved understanding of key policy actions expected to be before the Board in 2021

Presentation Outline



- Particulate Matter (PM) policy response
 - Advisory Council recommendations
 - Near-term actions
 - Planning for future action
- Rulemaking
 - 2021 rule actions
 - Other high-priority issues
 - New and modified facilities in impacted communities

Presentation Requested Action



None, Informational Only

PM Strategy – Advisory Council Findings



- PM is most important health risk driver in Bay Area air quality
- Current PM standards not health protective
- More stringent standards urgently needed; could save many lives in U.S. and Bay Area each year
- No known threshold for harmful PM_{2.5} health effects; so, further PM_{2.5} reductions will have public health benefits
- Air District guideline “target” below current PM_{2.5} standards warranted to protect public health

PM Strategy – Advisory Council Recommendations



- Move as quickly as possible to take maximal feasible action
- Prioritize those methods that are most effective in reducing exposure and improving public health and health equity in most impacted areas
- Focus PM reduction in areas with elevated exposures, health vulnerability, increased impacts, and sensitive populations
- Address multiple source categories with wide range of emission reduction measures; no single universal solution

2018 Bay Area Emissions (tons per day)



Sector	NOX	PM2.5
Permitted Stationary Sources	23.0	9.4
<i>Refineries</i>	9.7	4.2
<i>Refineries (FCCUs)</i>	1.7	2.2
<i>Other permitted sources</i>	13.3	5.2
Other Stationary Sources	20.4	13.4
<i>Residential wood combustion</i>	0.3	3.8
<i>Residential natural gas combustion</i>	10.9	1.1
<i>Commercial natural gas combustion</i>	2.5	0.6
<i>Commercial cooking</i>	<0.01	2.8
<i>Construction dust</i>	--	1.3
<i>Other (e.g., agricultural, small industry)</i>	6.7	3.9
Offroad Mobile	69.3	2.8
Onroad Mobile	82.6	8.6
TOTAL	195.4	34.2

Air District Response – PM Actions



Immediate Actions

- Rulemaking for refineries (fluidized catalytic cracking units)
- Rulemaking on residential water heaters and furnaces
- Dust in impacted communities

Near-term, High Priority Issues

- Wood smoke
- Commercial cooking

Future Planning

- What sources are most impactful (regional and community scale)
- Are they feasible to control and within our authority?
- What rules would provide the most equity and health benefits?

Rules for Board Consideration in 2021



Rules to Be Amended:

- Rule 6-5: Particulate Emissions from Petroleum Refinery Fluidized Catalytic Cracking Units (FCCUs)
- Rule 8-5: Storage of Organic Liquids
- Rule 9-4: Oxides of Nitrogen from Residential Furnaces
- Rule 9-6: Oxides of Nitrogen from Residential Water Heaters
- Rule 9-7: Oxides of Nitrogen from Industrial Boilers and Heaters

Priority Sources for 2021



- Diesel Particulate Matter / Data Centers
- Advisory Council Particulate Matter Priorities
 - Expanded community exposure assessments
 - Strengthened implementation and enforcement
 - Cumulative PM impacts in permitting
- Methane from Hydrogen Plants
- Methane and other air pollutants from landfills and composting

Sources in Impacted Communities



- Development and coordination of Community Emission Reduction Plans
- Permitting of new or modified sources
 - Impacted Communities: no increase in pollution sources
 - Air District response: considering having stricter permitting thresholds for air toxics in impacted communities
- Land use decisions and CEQA guideline updates
- Construction and other particulate matter generation in impacted communities



BAY AREA
AIR QUALITY
MANAGEMENT
DISTRICT

AGENDA: 14C

Legislative Initiatives

**Board of Directors Special Meeting/Retreat
January 20, 2021**

**Alan Abbs
Legislative Officer
aabbs@baaqmd.gov**

Presentation Outcome



Overview and Update of Air Quality Legislative Initiatives

Presentation Outline



- State Budget 2021 - 22
- State Legislation
- Federal Legislation

Presentation Requested Action



None, Informational Only

Legislative Overview



State Budget 2021 - 22

Governor's Budget Proposal Released January 8, 2021

- Assembly Bill (AB) 617 Incentives and Implementation
- Clean Transportation Program and Equity Programs (Clean Cars for All)
- Additional Carl Moyer Program Funding
- Proposal to Extend Moyer/AB 923/AB 118 Programs to 2045
- Securitization of up to \$1 Billion in AB 118 Funding to Expedite Electric Vehicle and Hydrogen Infrastructure

Legislative Overview (cont.)



State Legislation

Legislative Session 2021/2022

- Air District-Sponsored Bills
 - Magnet Source and School Siting Bills
- Wildfire Response
- Public Safety Power Shutoff (PSPS) and Emergency Backup Generation
- Moyer Reauthorization
- Climate Change

Legislative Overview (cont.)



Federal Legislation

- Clean Corridors Act (DeSaulnier – CA)
- Smoke Planning and Research Act (Eshoo – CA)
- Energy Resilient Communities Act (Barragan – CA)