



Bay Area Air Quality Management District
Board of Directors

Projects and Contracts with Proposed Grant Awards Over \$100,000

March 6, 2019
Adam Shapiro
Acting Supervising Staff Specialist
Strategic Incentives Division



CMP, MSIF, & CHP Grant Programs (Moyer Funds)

❖ Carl Moyer Program (CMP)

- Voluntary program created in 1998 to reduce emissions from heavy-duty engines

❖ Mobile Source Incentive Fund (MSIF)

- Assembly Bill (AB) 923 allowed for additional \$2 motor vehicle registration fee surcharge (12/04) to provide funding for CMP and Lower Emission School Bus Program (LESBP) projects

❖ Community Health Protection Grant Program (CHP)

- Created by AB 134 appropriation of \$250 Million (M) from the Greenhouse Gas Reduction Fund to reduce emissions in AB 617 communities
- Allocated \$50 M in funds for emission reduction projects for CMP and optionally under the Goods Movement Program



Project Recommendations Over \$100k

- ❖ **\$7,200,000 for Vehicle Buy Back (VBB)**
 - Fiscal Year Ending (FYE) 2019 VBB allocation for two vehicle retirement contractors (12 yard locations) and one direct mail service contractor
- ❖ **\$7,400,000 for two locomotive projects**
 - Replace two Caltrans passenger locomotives operating in the capital corridor
 - May include additional pass-through funds from other air districts





Project Recommendations Over \$100k

- ❖ **Six other recommended projects for awards totaling \$1,266,422:**
 - 2 school buses
 - 5 marine engines
 - 1 piece of off-road equipment
 - 1 piece of agricultural equipment

- ❖ **Emission reductions:**
 - Over 23.16 Tons Per Year (TPY) of criteria pollutants



Status of Moyer Incentive Funds for FYE 2018 & 2019

Funds available in FYE 2018 & 2019 \$76.2 M

Funds awarded since 10/12/17 \$63.06 M (82.7%)

**Moyer funds remaining and available for award
by June 2019 \$13.2 M**

Moyer category includes funding from:

Carl Moyer Program Year 19 & 20

Carl Moyer Program Statewide Funds

FARMER - Funding Agricultural Reduction Measures for
Emission Reductions Program (agriculture only)

LCFS - Low Carbon Fuel Standard



Recommendations

Recommend the Board of Directors:

1. Approve recommended projects with proposed grant awards over \$100,000 as shown in Attachment 1; and
2. Authorize the Executive Officer/APCO to enter into all necessary agreements with applicants for the recommended projects.



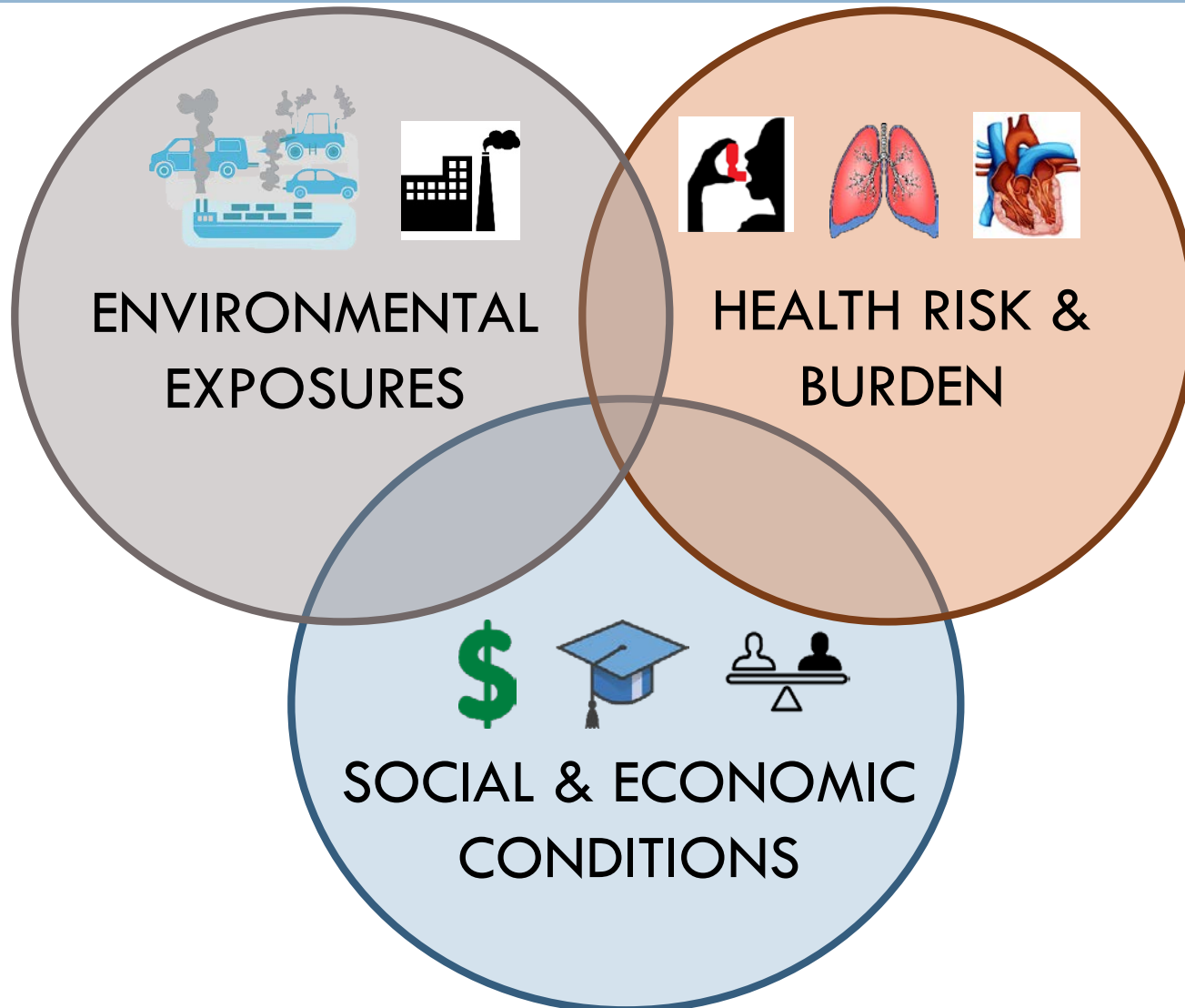
BOARD OF DIRECTORS MEETING MARCH 6, 2019

“HISTORICAL HEALTH INEQUITIES OF AIR POLLUTION”

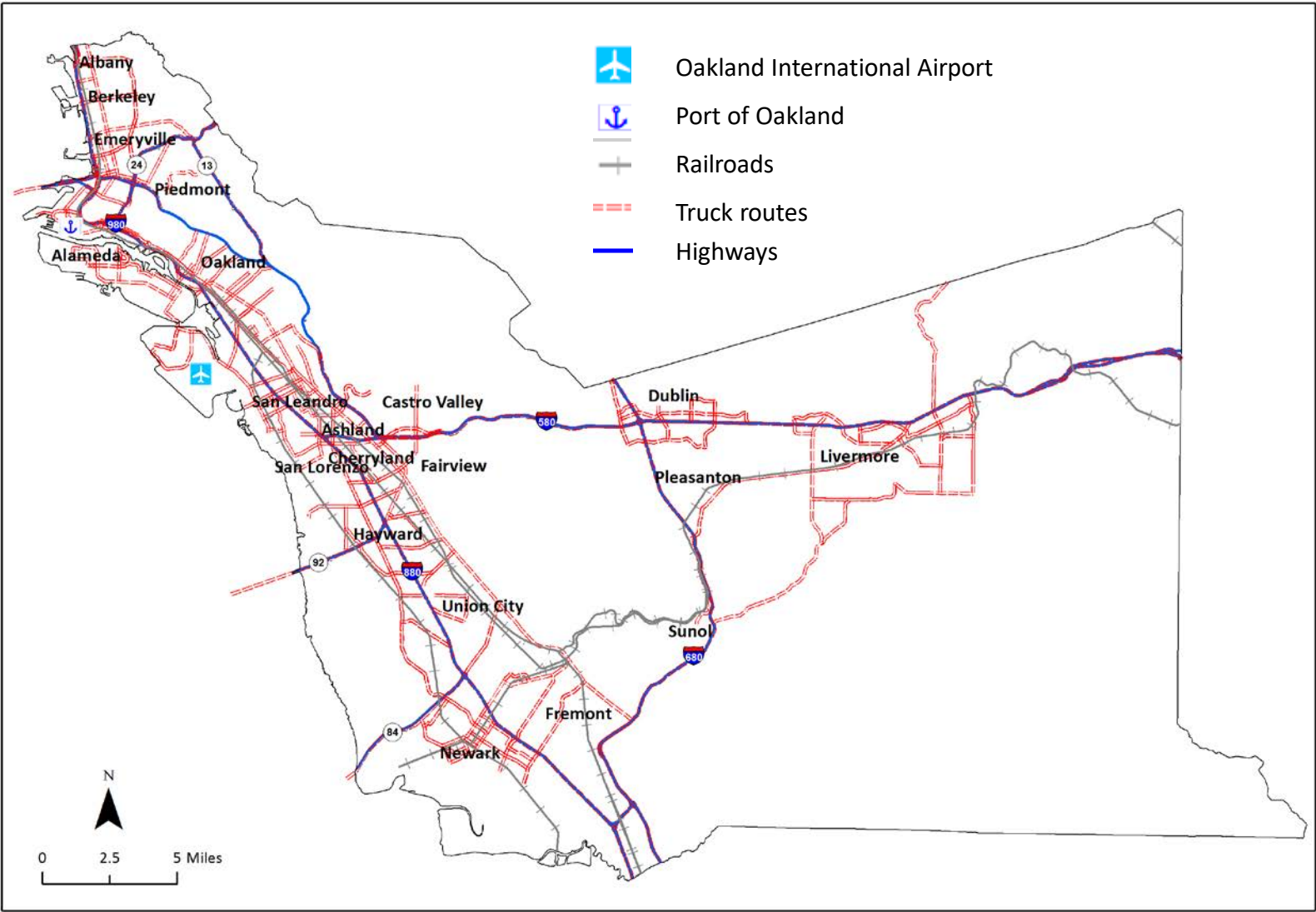


JUDITH CUTINO DO PE
HEALTH OFFICER

What puts people at risk of health impacts from air pollution?



Air quality is influenced by multiple factors, including proximity to highways, railways, truck routes, seaports, and airports.



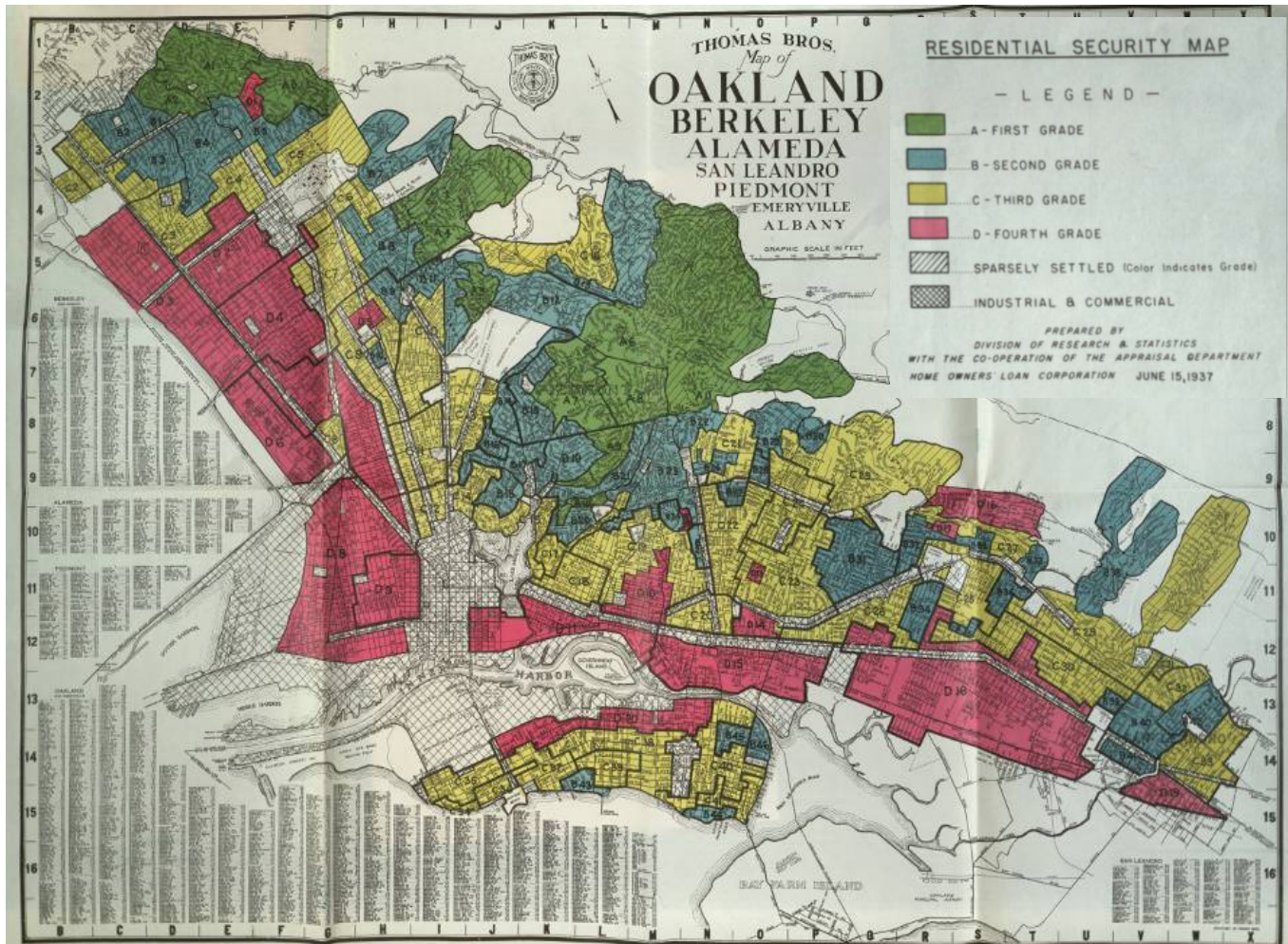
Source: CAPE, 2015

Cancer, heart disease, stroke and chronic lower respiratory disease are top 5 **leading causes of death**.

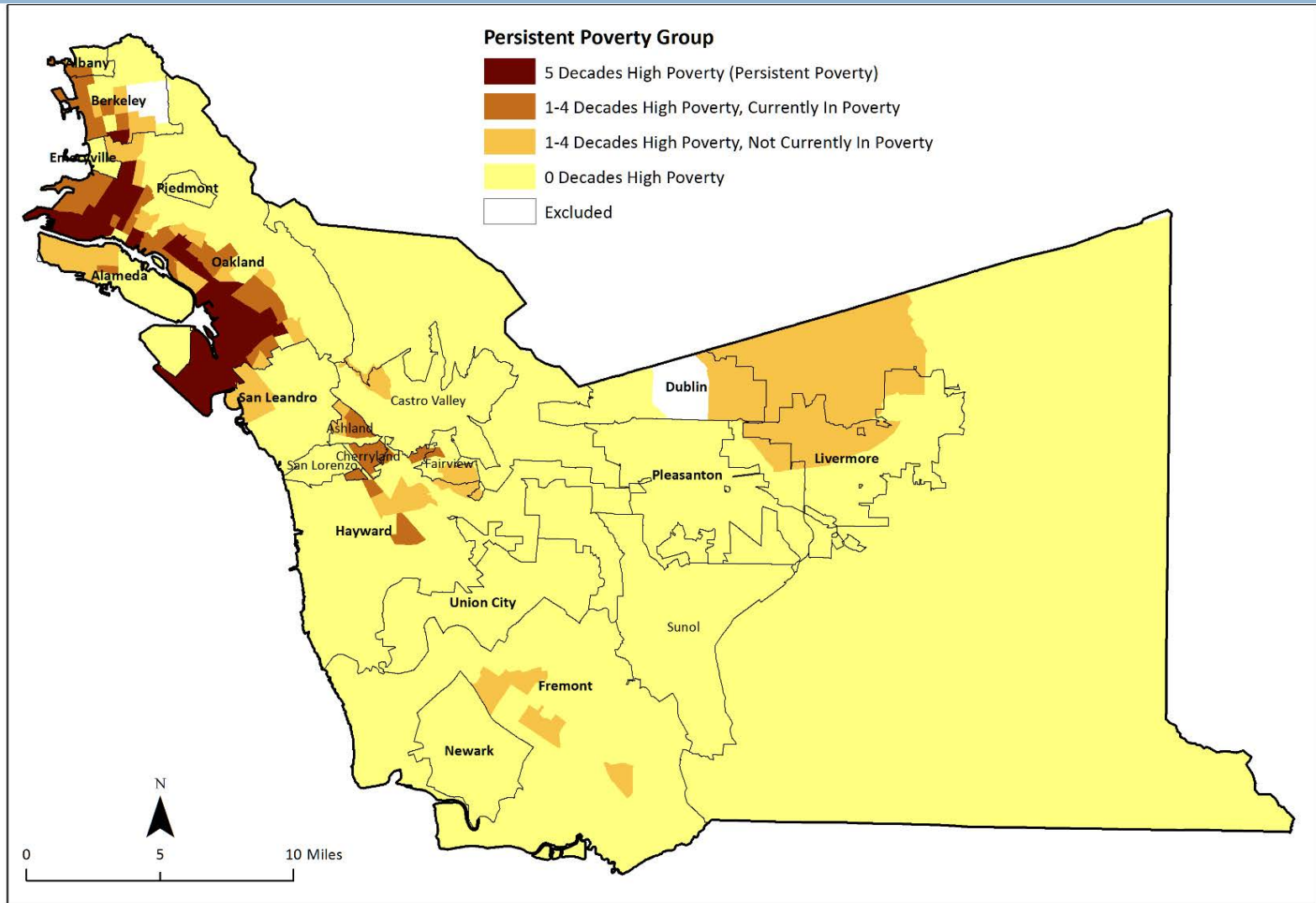
	Leading Causes of Death in Alameda County	Percentage of all deaths
➔	Cancer	24%
➔	Heart Disease	20%
➔	Stroke	7%
➔	Alzheimer's Disease	6%
➔	Chronic Lower Respiratory Disease	5%
	Unintentional Injuries	4%
	Diabetes	3%

Health inequities did not happen overnight. They have deep **historical roots**.

RESIDENTIAL SECURITY MAP, ALAMEDA COUNTY, 1937
(Created by Federal Home Owners Loan Corporation)



Long-standing disinvestment and persistent poverty means fewer resources and weaker infrastructure to support health.



Source: CAPE, with data from Geolytics Neighborhood Change Database, 1970-1990; Census 2000; and American Community Survey 2013 5-year files.

Racism impacts who has to live in high poverty neighborhoods with barriers to good health.

1 in 10 White residents live in **high-poverty neighborhoods**, compared to:



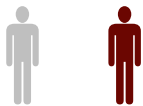
1 in 7 Asians



1 in 3 Latinos



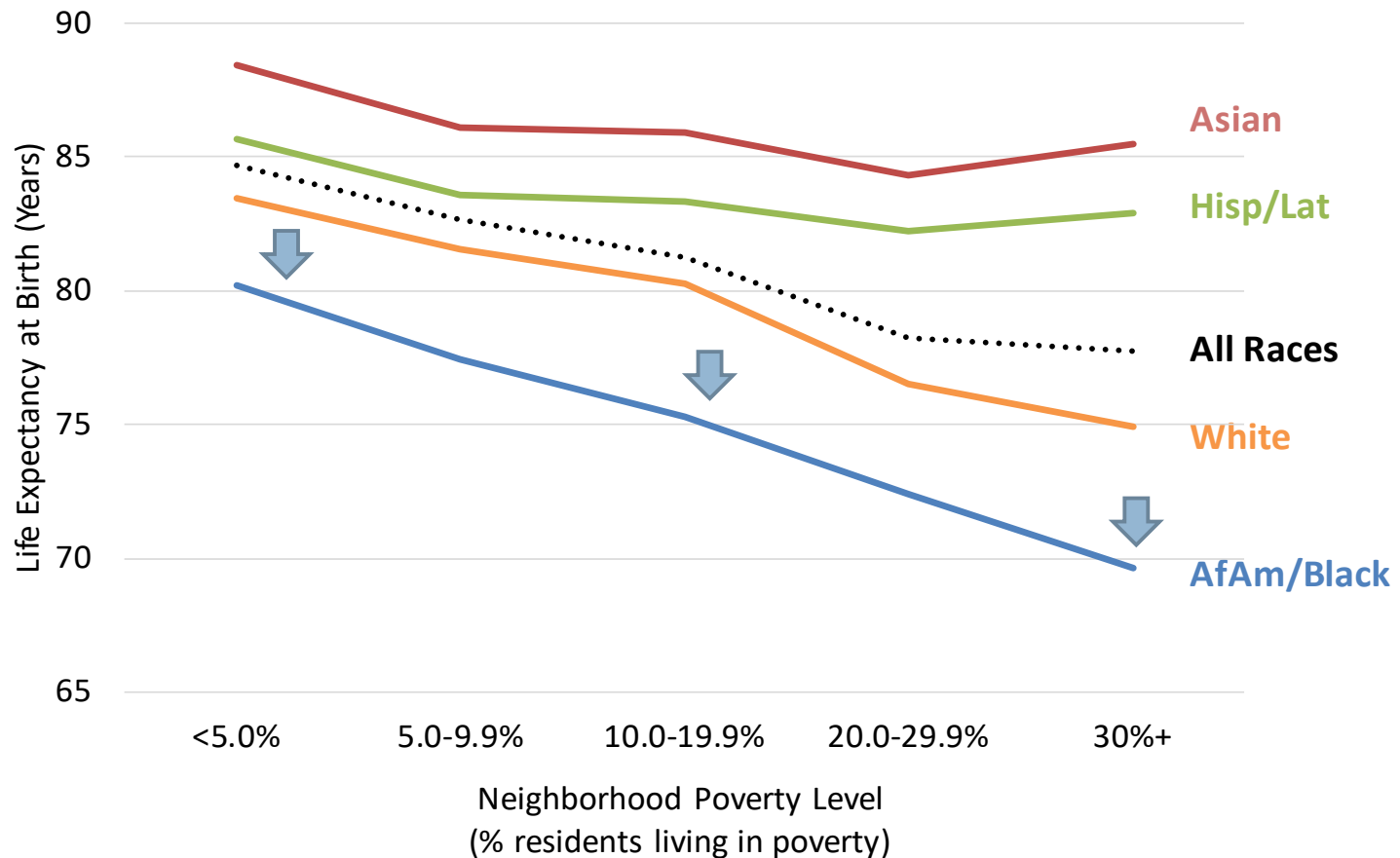
1 in 2 Blacks



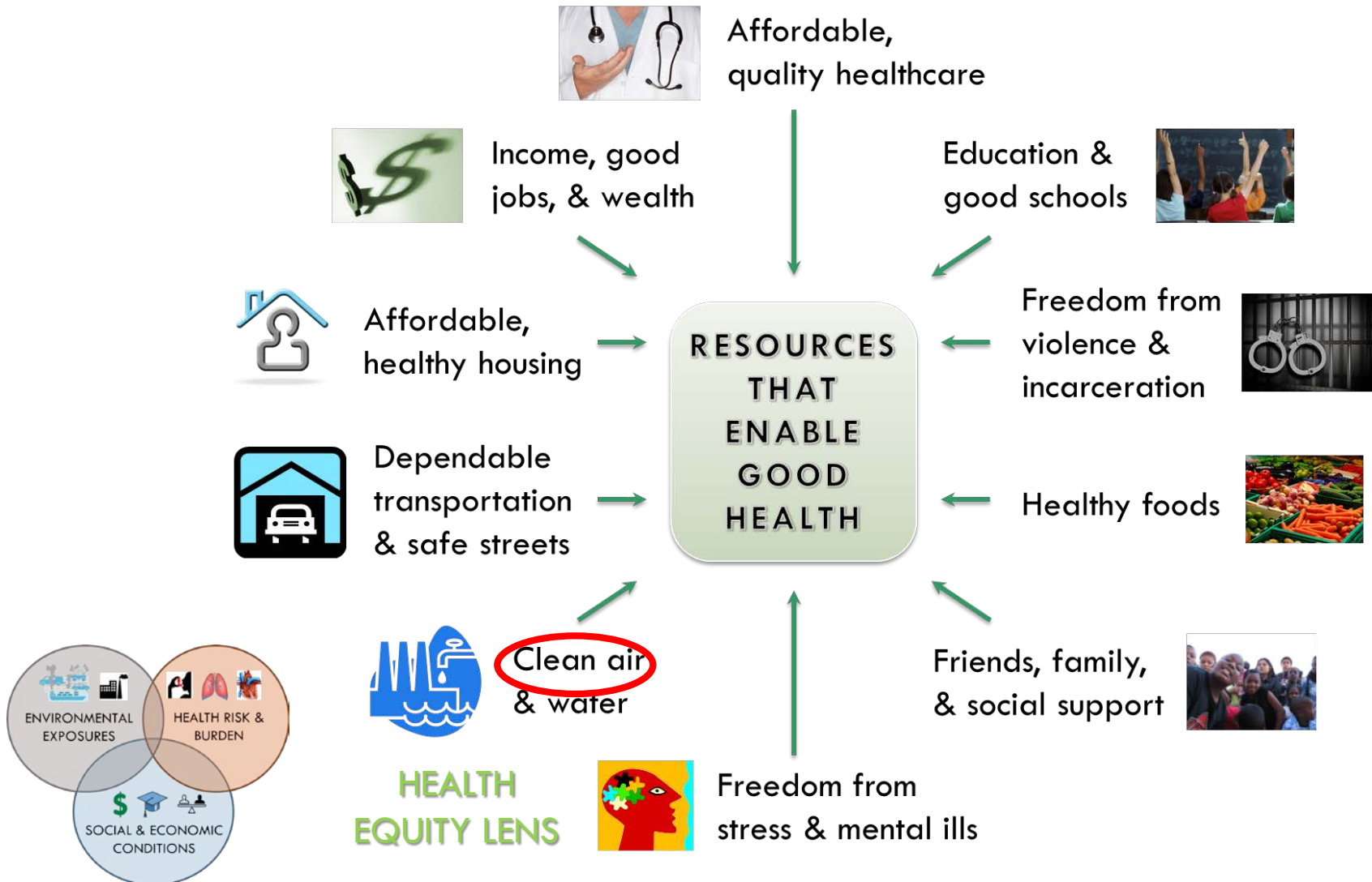
African Americans are especially exposed to and impacted by cumulative health risks.

Life Expectancy by Neighborhood Poverty Level and Race

Alameda County, 2013-2015



To improve air quality and health, we must reduce air pollution exposures and maximize health co-benefits in our most impacted communities.



Summary of Ozone Seasons

Year	National 8-Hour	State 1-Hour	State 8-Hour
2015*	5	4	11
2016	15	5	15
2017	6	6	6
2018	3	2	3
2019	-	-	-

Spare the Air Alerts: 6/22/18, 6/23/18, 6/30/18, 7/26/18, 8/8/18, 8/9/18, 8/18/18, 8/19/18, 8/23/18, 8/24/18, 9/3/18, 9/25/18, 9/26/18

Days > 0.070 ppm 8-hour NAAQS: 8/3/18, 8/9/18, 8/18/18

*Based on NAAQS of 0.075 ppm that was in place during that year

Winter PM_{2.5} Seasons

Year	Days > 35 µg/m ³	Winter Spare the Air Alerts
2015/2016	0	1
2016/2017	0	7
2017/2018	8	19
2018/2019	14	16

- **Spare the Air Alert Called for:** 11/8/18 – 11/21/18, 12/15/18, 1/28/19
- **Days > 35 µg/m³ 24-hr NAAQS:** 11/8/18 – 11/21/18

Calendar Year Summary

Year	National Ozone Exceedances	Days > 35 $\mu\text{g}/\text{m}^3$ due to Wildfires (PM _{2.5})	Total Days > 35 $\mu\text{g}/\text{m}^3$ (PM _{2.5})
2015	5*	3	9
2016	15	0	0
2017	6	14	18
2018	3	16	20
2019	-	0	0

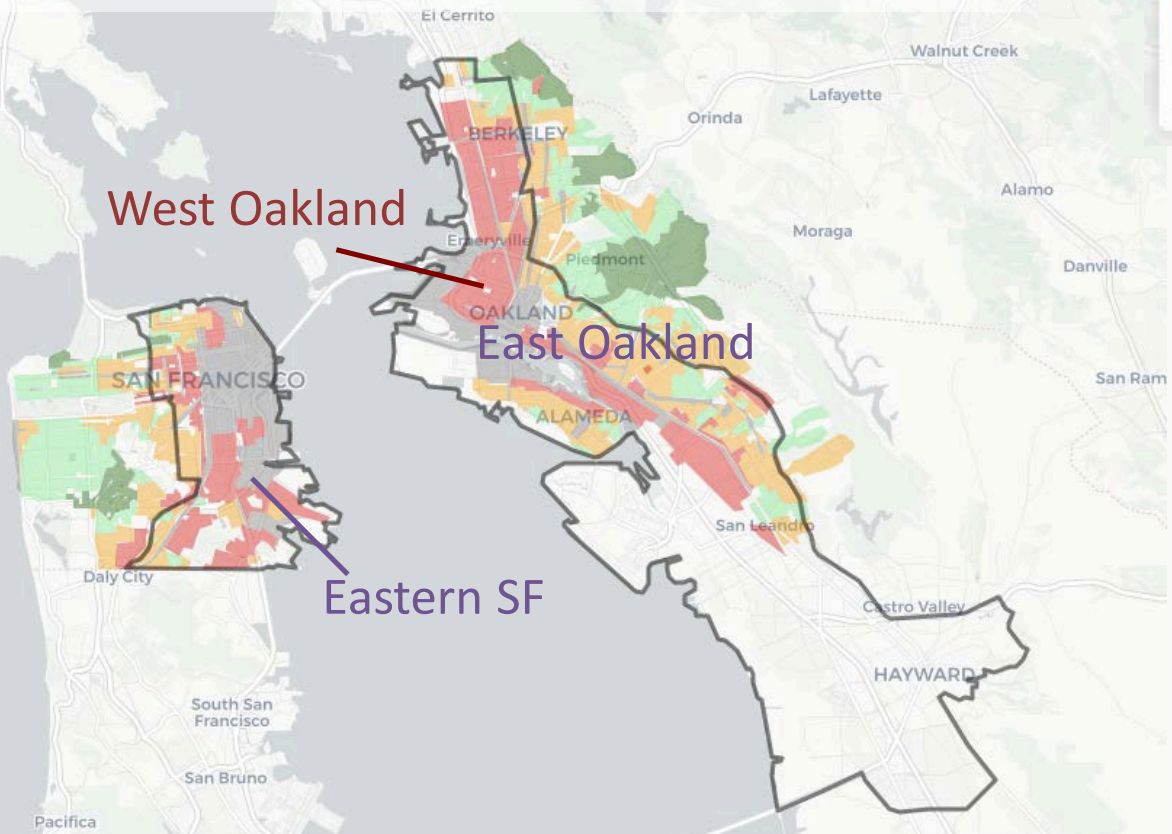
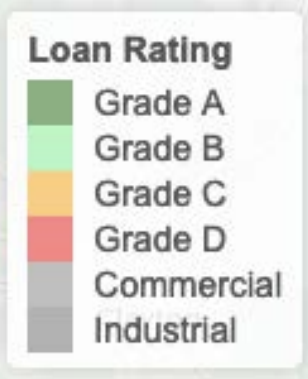
For Ozone - Days > 0.070 ppm 8-hour NAAQS: 08/03/18, 8/9/18, 8/18/18

* Based on NAAQS of 0.075 ppm that was in place during those years

For Wintertime - Days > 35 $\mu\text{g}/\text{m}^3$ 24-hr NAAQS: 12/15/17, 12/24/17, 12/30/17, 12/31/17, 1/1/18, 1/2/18, 1/3/18, 1/4/18, 11/8/18 – 11/21/18

(Other exceedances occurred due to wildfires)

Redlining Loan Rating Maps and AB 617 Communities



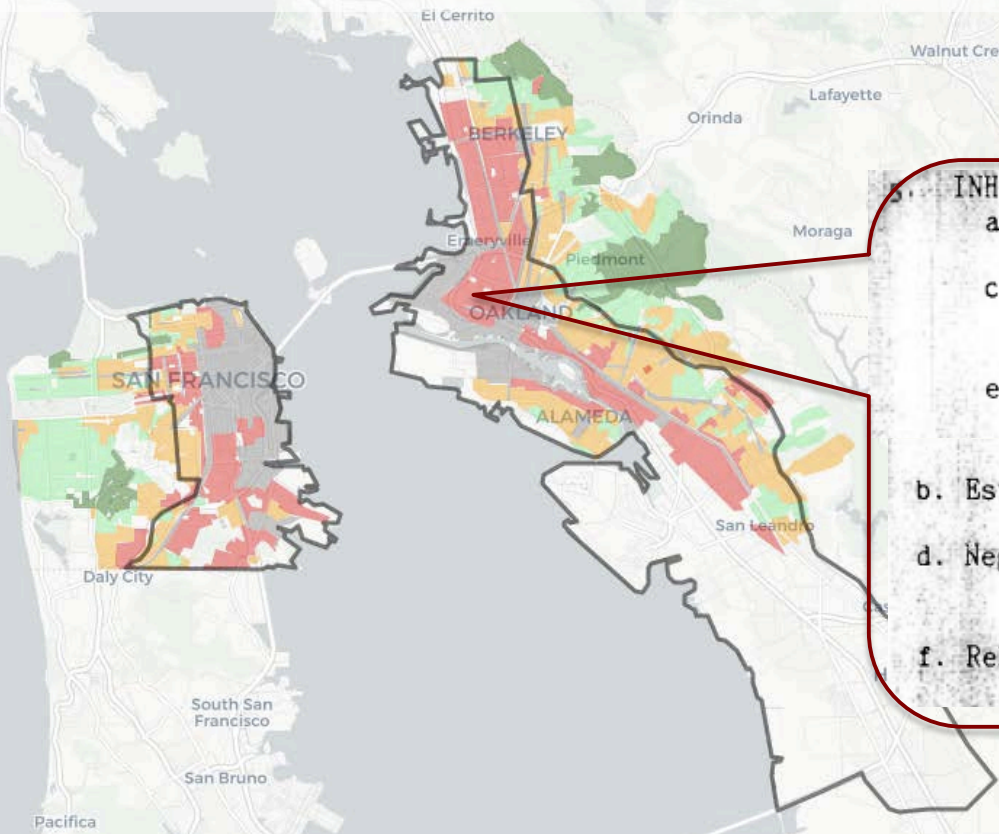
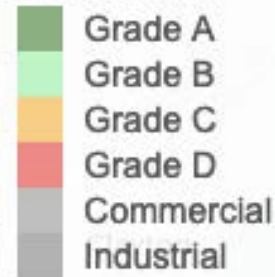
Year 1 AB 617

Years 2-5 AB 617

___ CARE Community

Redlining Loan Rating Maps and AB 617 Communities

Loan Rating



5. INHABITANTS:

a. Type Wage earners, shop-keepers, clerical help

c. Foreign-born Latin, Slavic, 20 %;
(Nationality etc.
Oriental
and Negro, etc. ;

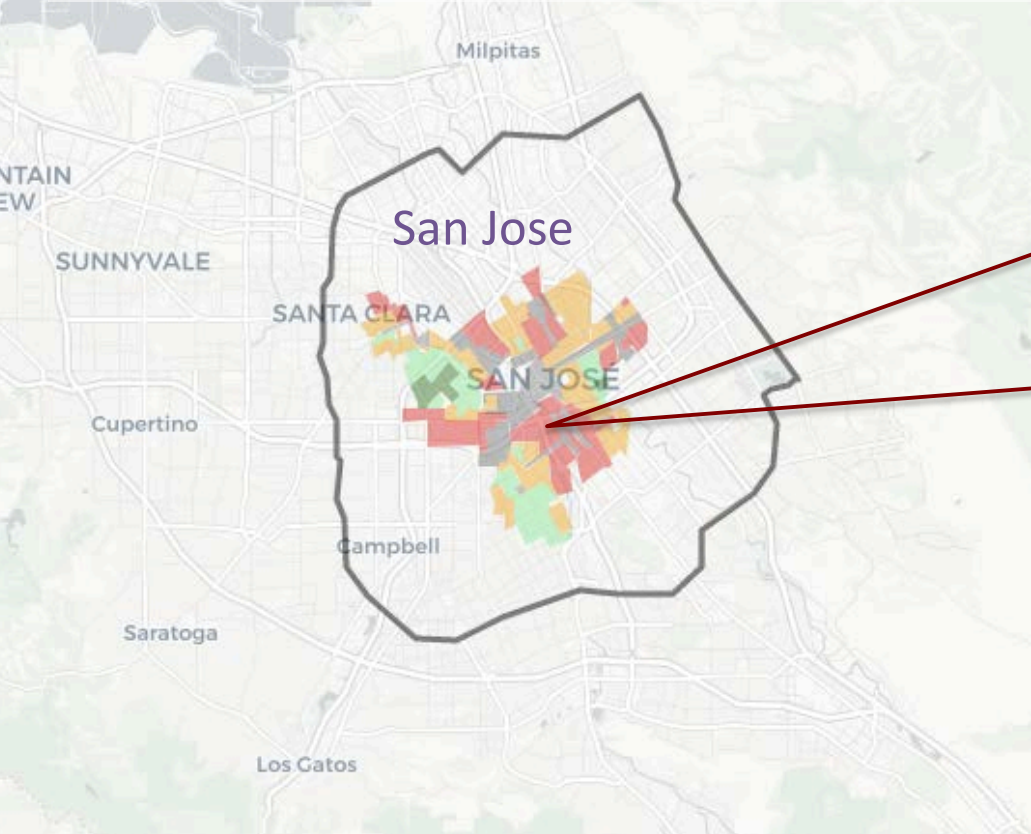
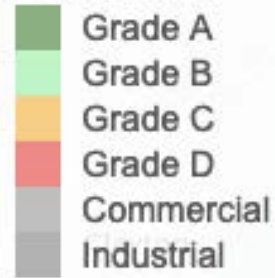
b. Estimated annual family income \$ 1000-1800

d. Negro Yes ; 40 % ;
(Yes or No)

f. Relief families Many ;

Redlining Loan Rating Maps and AB 617 Communities

Loan Rating



5. INHABITANTS: Skilled and unskilled laborers
- Type Mill, cannery & orchard workers, truck drivers, etc.
 - Foreign-born Italians ; 75 % ;
(Nationality)
Slavs, Portuguese
 - Infiltration of Mexican ;
- b. Estimated annual family income \$ 900 to 2700
- d. Negro Yes ; 1 % ;
(Yes or No)
Yes.
- f. Relief families / Many-largely WPA Workers ;
decreasing _____ ; static.