

Plan BayArea

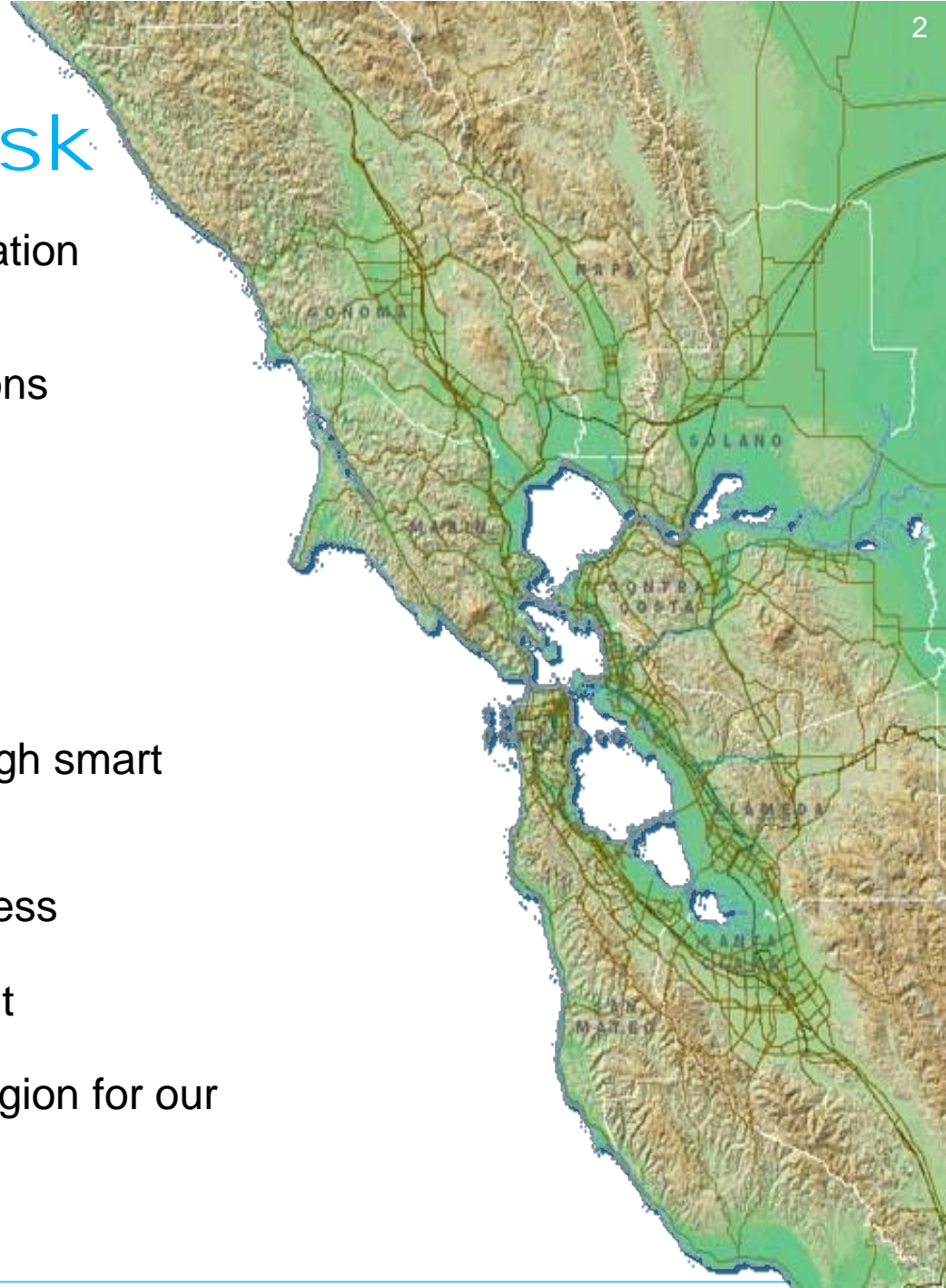
Draft Plan Bay Area Presentation

Bay Area Air Quality Management District

April 17, 2013








The Regional Task

- Integrate land use and transportation planning
- Reduce greenhouse gas emissions 15% by 2035
- House the region's population at all income levels
- Embody local visions
- Stretch available revenues through smart investments
- Increase economic competitiveness
- Preserve our natural environment
- Help ensure a healthy, vibrant region for our children and grandchildren

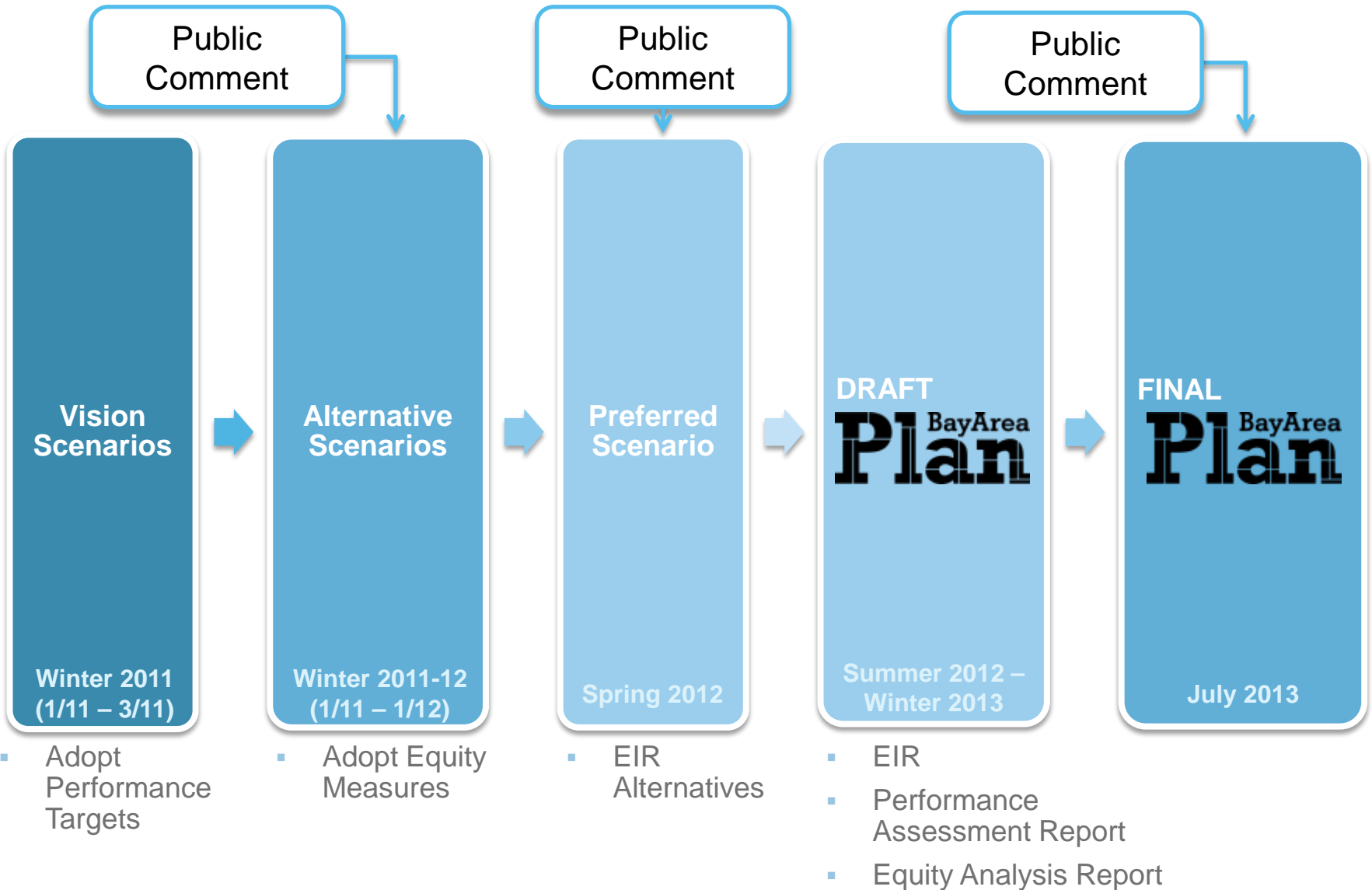


Setting Our Sights: Performance *Matters*

Adopted Plan Bay Area Performance Targets

ECONOMY	 <p>ECONOMIC VITALITY</p> <ul style="list-style-type: none">➤ Increase gross regional product	 <p>TRANSPORTATION SYSTEM EFFECTIVENESS</p> <ul style="list-style-type: none">➤ Increase non-auto mode share➤ Reduce VMT per-capita➤ Maintain the transportation system
	 <p>CLIMATE PROTECTION</p> <ul style="list-style-type: none">➤ Reduce per-capita greenhouse gas emissions from cars and light-duty trucks	 <p>HEALTHY AND SAFE COMMUNITIES</p> <ul style="list-style-type: none">➤ Reduce premature deaths from exposure to particulate emissions➤ Reduce injuries and fatalities from collisions➤ Increase average daily time spent walking or biking
 <p>OPEN SPACE AND AGRICULTURAL PRESERVATION</p> <ul style="list-style-type: none">➤ Direct all non-agricultural development within the urban footprint		
EQUITY	 <p>ADEQUATE HOUSING</p> <ul style="list-style-type: none">➤ House all of the region's projected housing growth	 <p>EQUITABLE ACCESS</p> <ul style="list-style-type: none">➤ Decrease housing and transportation costs as a share of low-income household budgets

Plan Bay Area Development Process



Draft Plan Bay Area = Preferred Scenario approved May 2012

- Jobs-Housing
Connection Strategy
- Transportation
Investment Strategy



Draft Plan Bay Area Growth Trends

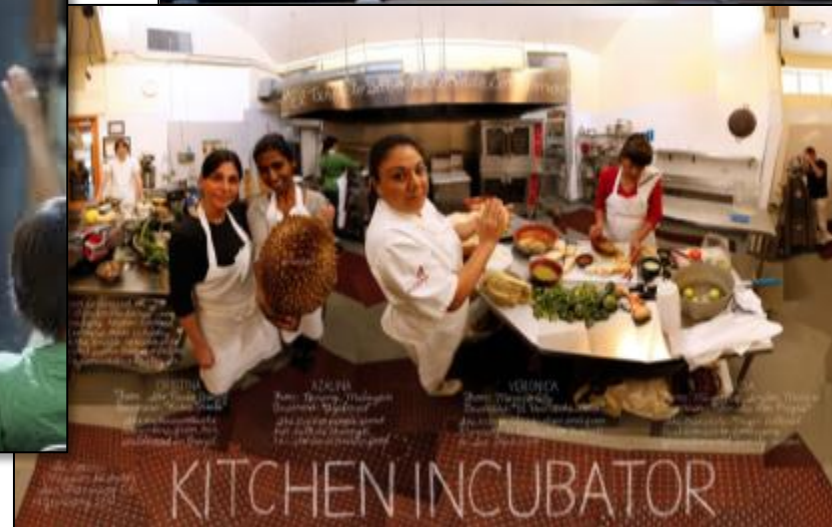
Regional Growth

	2010	2040	Growth 2010-2040
Jobs	3,385,000	4,505,000	1,120,000
Population	7,151,000	9,299,000	2,148,000
Housing Units	2,786,000	3,446,000	660,000

Employment Trends

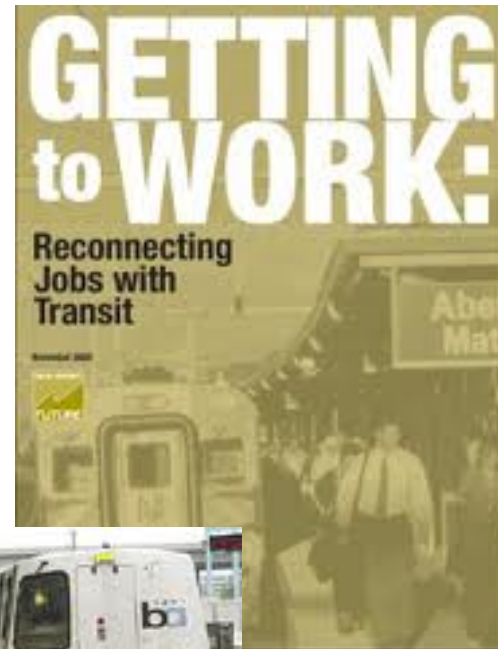
Knowledge-based and Service Industries Lead Job Growth

- Nearly 75% of new jobs in professional services, health and education, and leisure and hospitality



Employment Trends

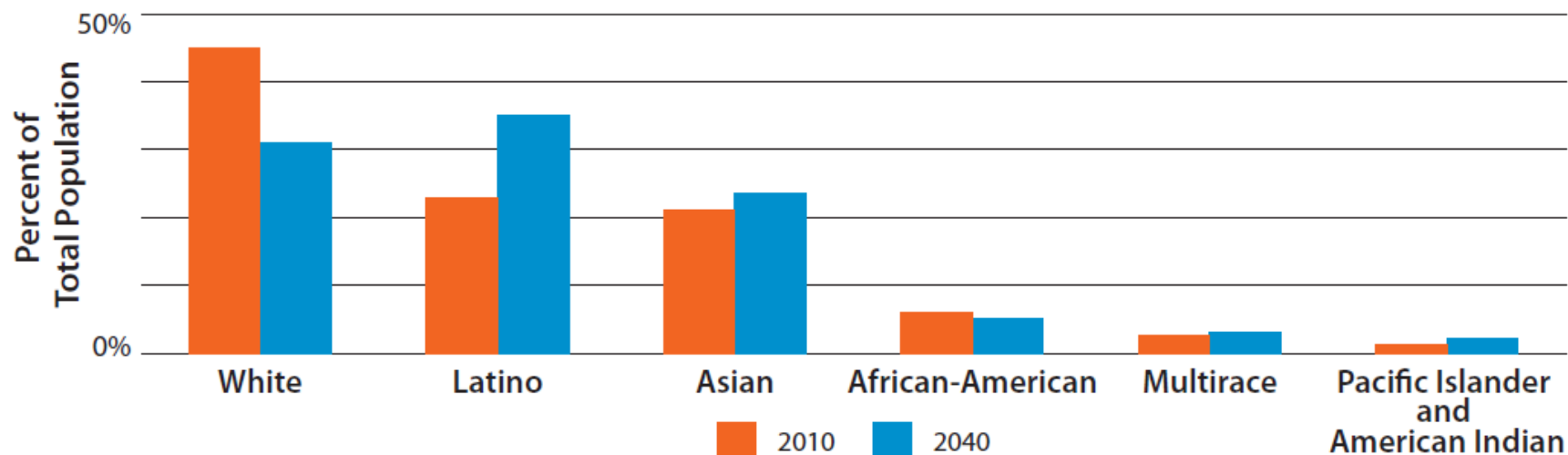
Knowledge sector and service sectors expected to grow have shown a strong preference for locations near transit in urban centers



Population Trends

Region will grow significantly more diverse.

Figure 1 Share of Population by Race and Ethnicity, 2010 and 2040

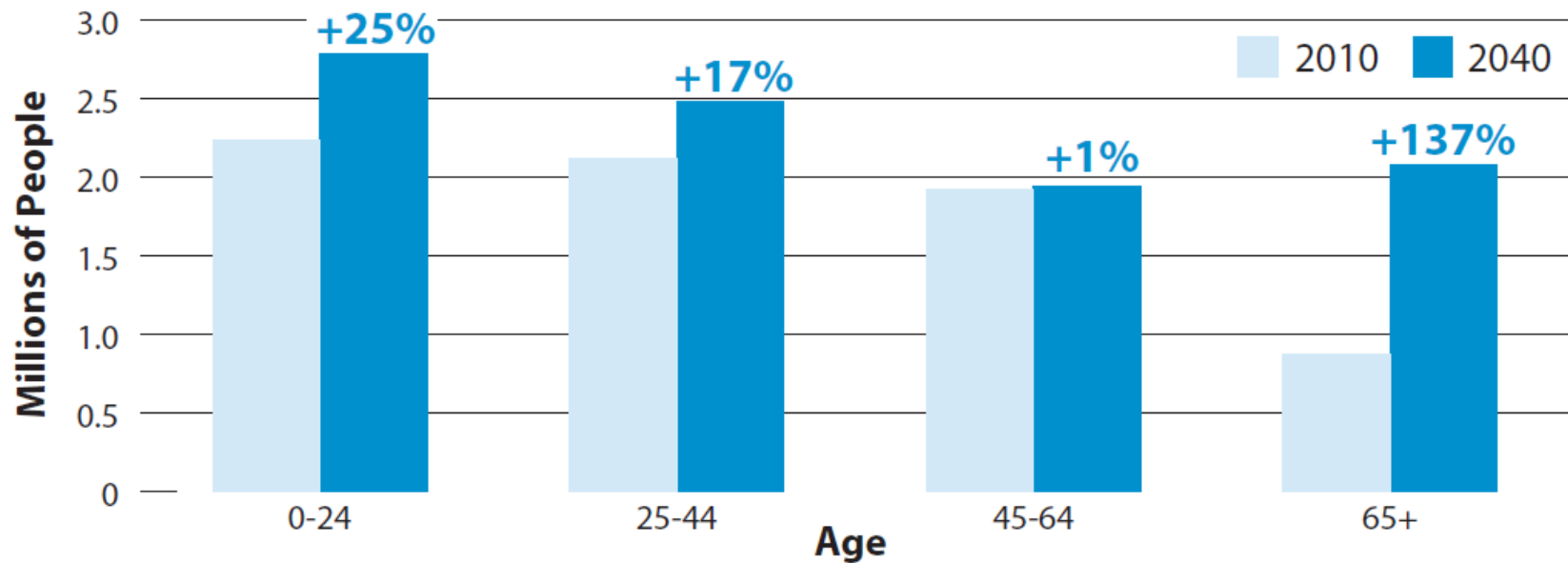


Sources: 2010 Census, California Department of Finance, ABAG

Population Trends

Senior population will grow dramatically.

Figure 2 Bay Area Population by Age, 2010 and 2040

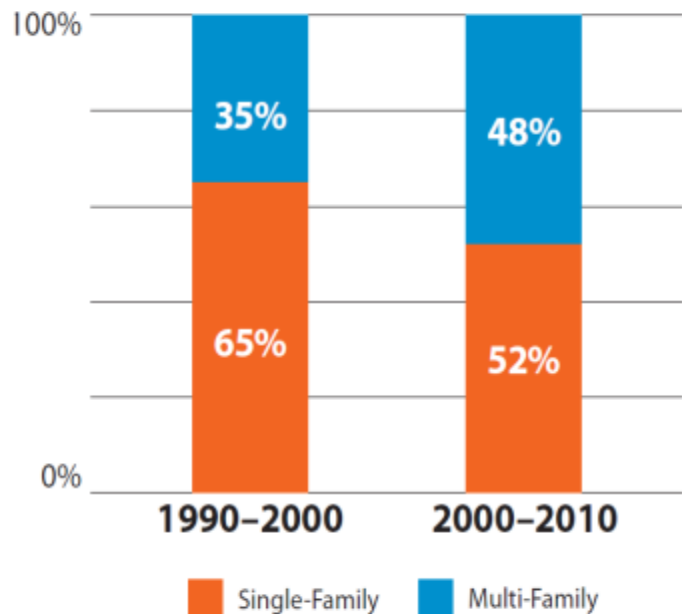


Sources: 2010 Census, California Department of Finance, ABAG

Housing Trends

Aging, more diverse population drives demand for multi-family housing near services and transit.

Figure 6 Bay Area Housing Construction
By Type, 1990–2010



Source: U.S. Census

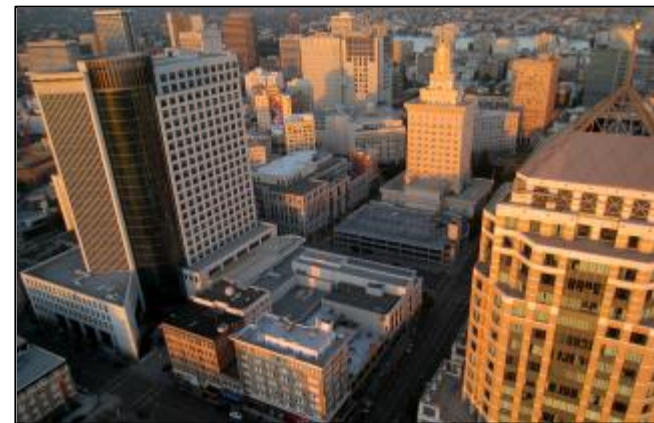


Draft Plan Bay Area Growth Strategy

Regional Growth Strategy

Priority Development Areas

- Nearly 170 city nominated-areas in over 60 cities and counties
 - Within an existing community/Infill development area
 - Near existing/planned transit
 - Providing housing and/or jobs
 - Diversity of densities and community identities



Regional Growth Strategy

Priority Conservation Areas

- Areas to be retained for open space or farmland to maintain quality of life
- More than 100 locally nominated areas





Regional Growth Strategy Focused Growth


 **Non-urbanized land**

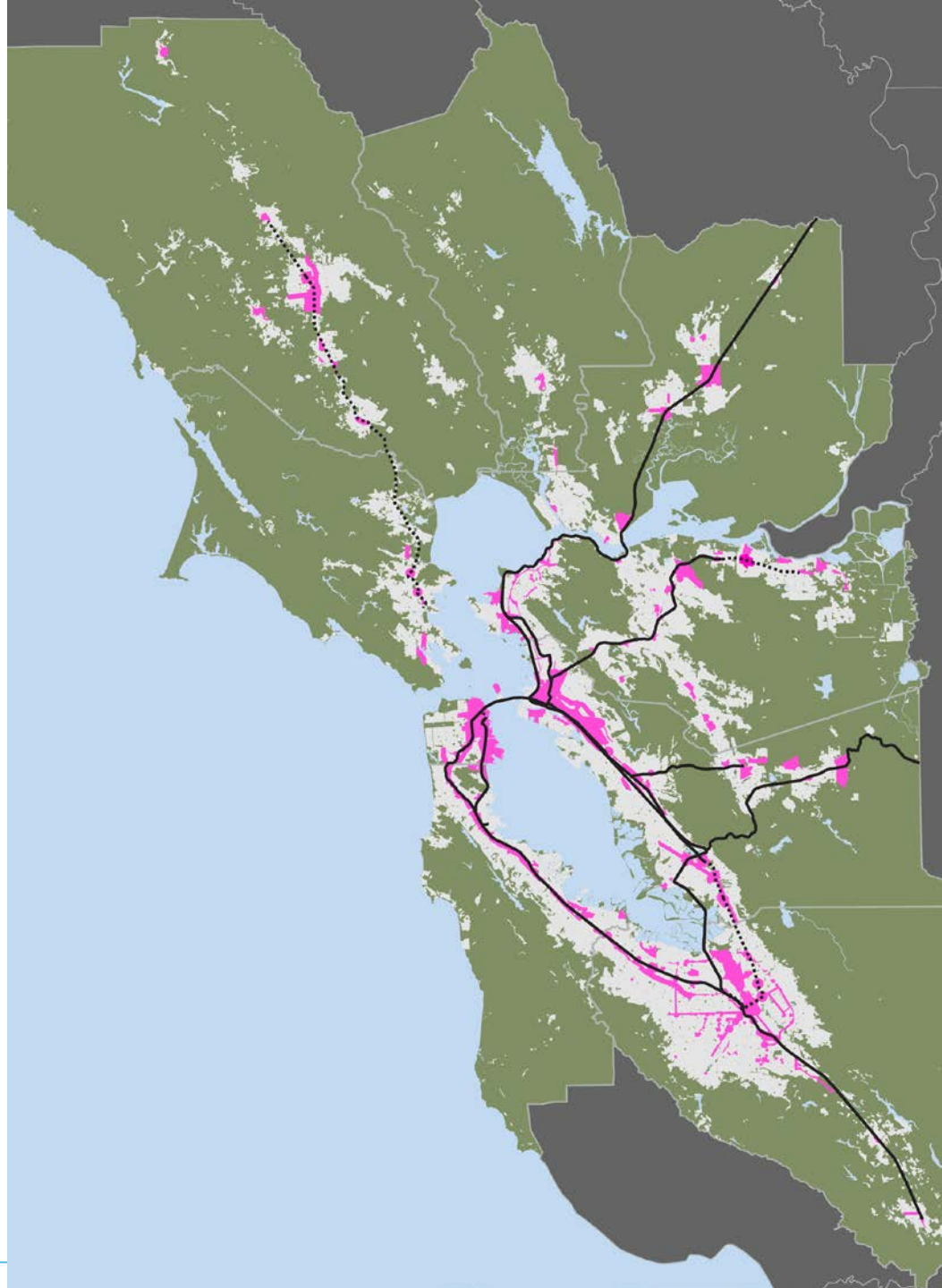
 **Urbanized land**

 **PDA**

 Less than 5% of region's land

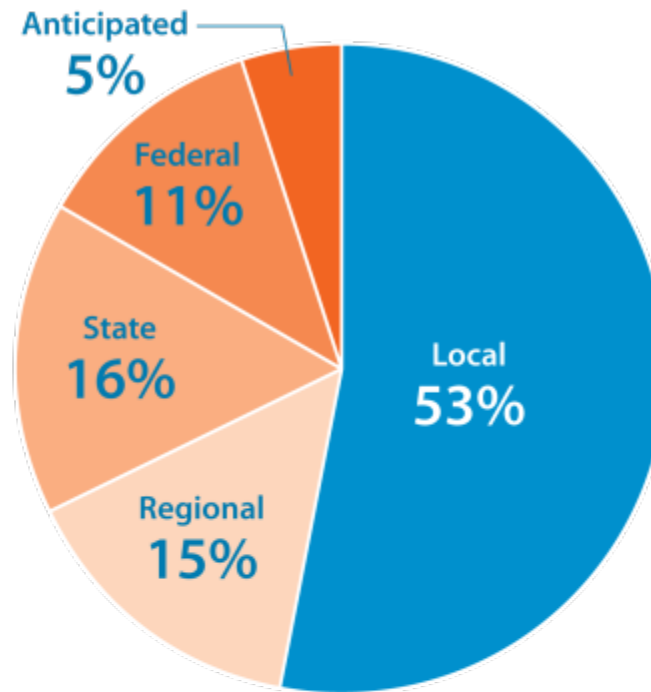
 Nearly 80% of new homes

 Over 60% of new jobs



Draft Plan Bay Area Investments

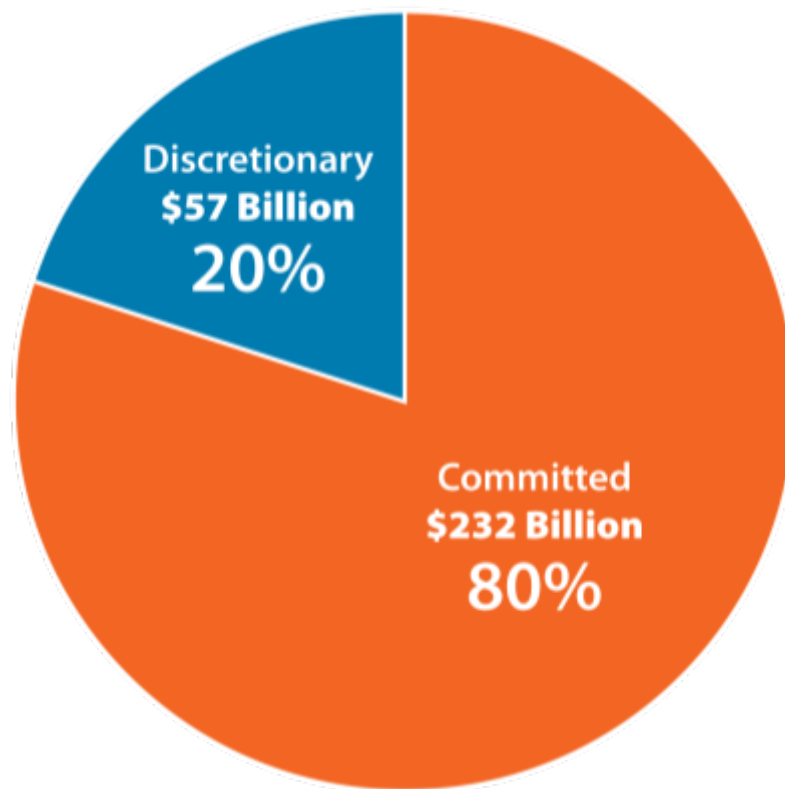
Revenue Forecast to 2040



Source	YOES billions	% of Total
Local	\$154	53%
Regional	\$43	15%
State	\$45	16%
Federal	\$33	11%
Anticipated	\$14	5%
Total	\$289	100%

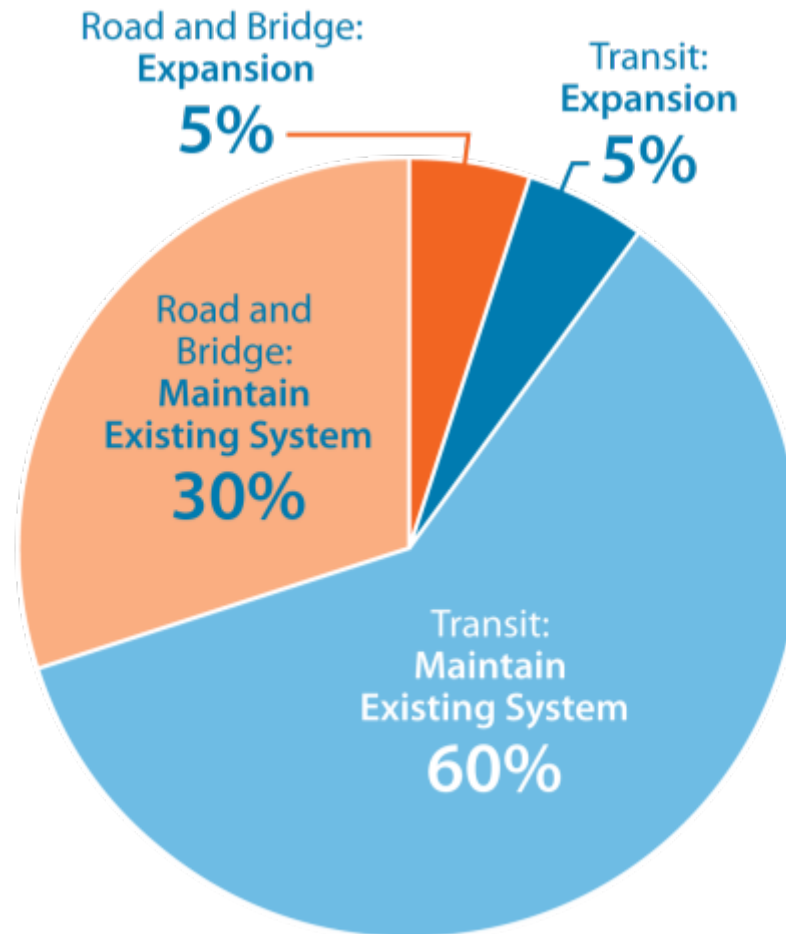
Committed and Discretionary Revenues

Total Revenue — \$289 Billion



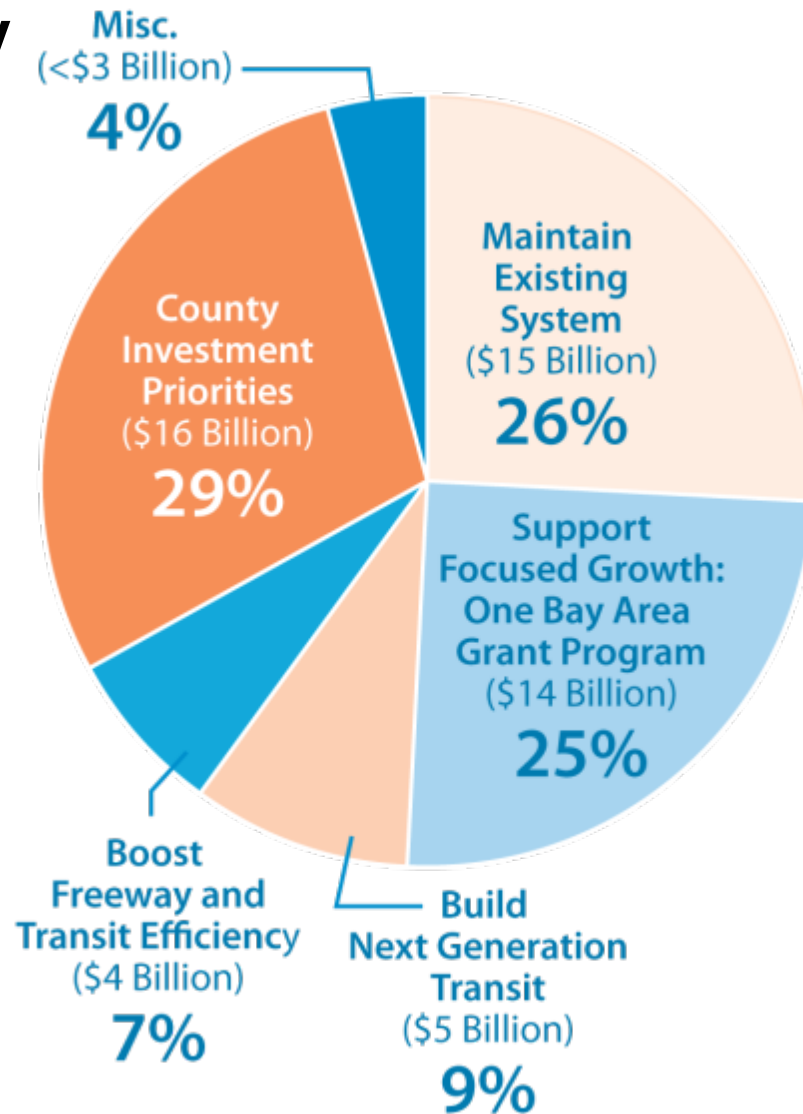
Committed Investments

Committed Revenue — \$232 Billion



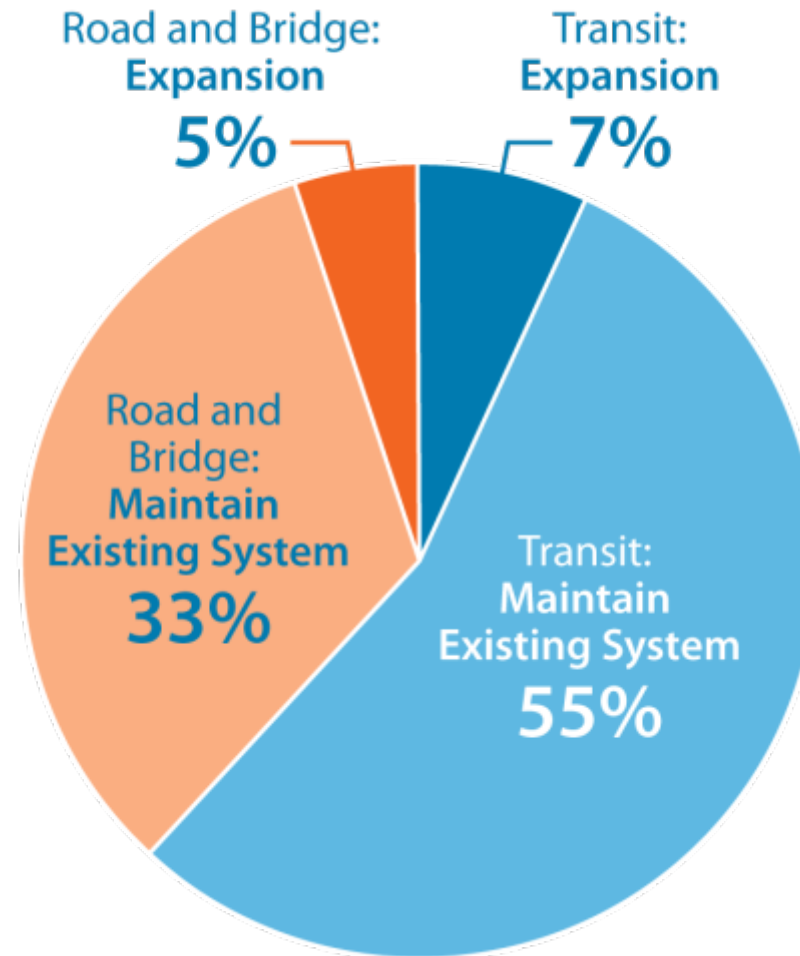
Discretionary Investments

**Discretionary
Revenue –
\$57 Billion**



Total Transportation Investments

Total Revenue — \$289 Billion



Highest Performing Transportation Projects

1	BART Metro Program (including Bay Fair Connection & Civic Center Turnback)
2	Treasure Island Congestion Pricing
3	Congestion Pricing Pilot
4	AC Transit Grand-MacArthur Bus Rapid Transit (BRT)
5	Freeway Performance Initiative
6	Intelligent Transportation System (ITS) Improvements in San Mateo Co.
7	ITS Improvements in Santa Clara Co.
8	Irvington BART Station
9	SFMTA Transit Effectiveness Project
10	Caltrain Service Frequency Improvements (6-train Service during Peak Hours) + Electrification (SF to Tamien)
11	BART to San Jose/Santa Clara (Phase 2: Berryessa to Santa Clara)
12	Van Ness Avenue BRT
13	Better Market Street

Performance Results

Plan Meets or Exceeds Six Targets

Climate Protection	Reduce per-capita emissions from cars and light duty trucks by 15%	Reduces by 18% by 2040
Adequate Housing	House 100% of the region's projected growth	Houses 100% of projected growth
Healthy and Safe Communities	Reduce premature deaths from exposure to fine particulate matter by 10%	Reduces exposure by 71%
	Achieve greater reductions in highly impacted areas	Achieves greater reductions
Open Space and Agricultural Land	Direct all non-agricultural development within existing urban development and urban growth boundaries	Achieves target
Economic Vitality	Increase gross regional product (GRP) by 110%	Increases GRP by 119% to 2040

Performance Results

Plan Makes Progress toward Five Targets

Healthy and Safe Communities	Reduce coarse particulate emissions by 30%	Reduces coarse particulate emissions by 17%
Active Transport	Increase average daily walking or biking per person by 70%	Plan boosts per-person active transport by 17%
Transportation System Effectiveness	Increase non-auto trips to 26% of all trips	Plan boosts non-auto trips to 20% of all trips
	Decrease auto vehicle miles traveled (VMT) per person by 10%	Plan reduces VMT per person by 9%
	Increase local road pavement condition to rating of 75 or better	Plan improves condition to rating of 68

Performance Results

Plan Moves in Opposite Direction from Four Targets

Reduce Injuries and Fatalities from Collisions

Reduce by collisions by 50%, including bike and pedestrian

Collisions increase by 18% during plan period

Equitable Access

Decrease share of household income needed to cover transportation and housing costs from 66% to 56%

Share of household income projected to rise to 69% for low-income and lower-income households

Transportation System Effectiveness

Decrease number of poor quality highway lane miles to less than 10% of total highway system

Percentage projected to rise to 44% of total highway system

Replace all buses, trains and other transit equipment on schedule

Share of transit assets past their useful life projected to increase to 24%

Draft Plan Bay Area

A Plan To Build On

A Platform for Advocacy

Land Use

- **Support PDA Development With Locally Controlled Funding**
- **Modernize CEQA**
- **Stabilize Federal Funding Levels**
- **“Defiscalize” Land Use Decision-making**

Transportation

- **Support Local Self-Help**
- **Seek Reliable Transportation Funding Levels and Flexibility**
- **Grow State Transportation Funding**

A Work in Progress

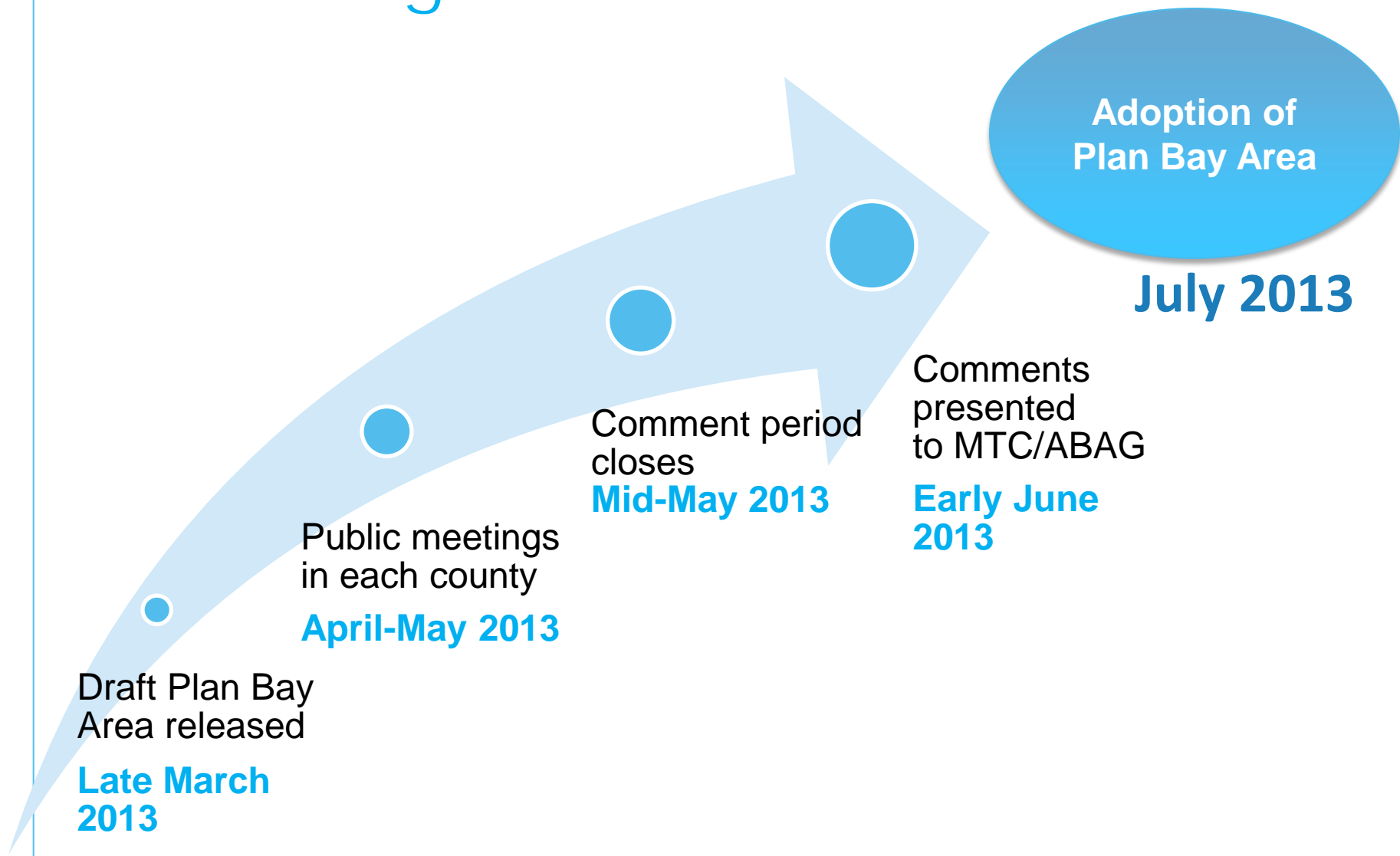
A Vibrant Economy

- Improve Permitting Process
- Implement the Plan Bay Area Prosperity Plan
- Link Housing, Transportation and Economic Development

Planning for Resilience

- Promote Healthy Infill Development
- Curb Greenhouse Gases
- Climate Adaptation and Sea Level Rise
- Earthquake Mitigation and Recovery

Remaining Plan Milestones



Discussion