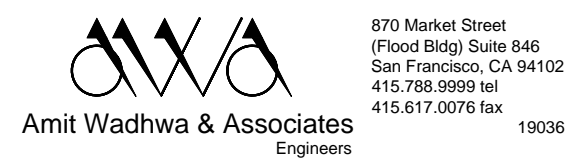




Stamp



Consultant



Issue/Revision:

No.	Rev.	Date	Description
1			32243.01 ISSUE FOR REVIEW 24MAR19
2			32243.01 ISSUE FOR PERMIT 22APR19

Copyright Statement:
All drawings and written material appearing herein constitute original and unadulterated original work of the architect and may not be duplicated, used, or disclosed without prior written consent of the architect.
Approval Signature:

Co./ Title: Date:

1ST FLOOR - PLUMBING RISER, DIAGRAMS, DETAIL, AND SCHEDULES

CODE	MFR	MODEL	LOCATION ROOM NO.	ELECTRIC INPUT V/KW/PH	GPH	TEMP. RISE	WORKING PRESS. (MIN.)	WEIGHT WITH WATER (LBS.)	REMARKS
IWH-1-1	CHORNOMITE	E-46LLP	PANTRY 105	277V/4.6KW/1PH	-	42°F AT 0.75 GPM	42 PSI	8	TANKLESS TYPE
IWH-1-2	CHORNOMITE	E-70LLP	MEN'S ROOM 108	277V/7.0KW/1PH	-	64°F AT 0.75 GPM	42 PSI	8	TANKLESS TYPE

NOTE:
1. WATER HEATER SHALL MEET ALL EFFICIENCY REQUIREMENTS OF TITLE 24 AND AS LISTED IN THE APPLIANCE EFFICIENCY REGULATIONS.
2. PROVIDE DRIP PAN UNDER WATER HEATER WITH LDS-1 SENSOR AT PANTRY ROOM
3. PROVIDE SENSOR AT THE DRIP PAN

CODE	DESCRIPTION	SOIL/WASTE	TRAP	VENT	CW	HW	REMARKS
WC-1	WATER CLOSET	4"	-	2"	1 1/2"	-	①
WC-2	WATER CLOSET (ADA)	4"	-	2"	1 1/2"	-	①
UR-1	URINAL (ADA)	2"	-	2"	3/4"	-	②
LV-1	LAVATORY (ADA)	2	1 1/4"x1 1/2"	1 1/2"	1/2"	1/2"	③
SK-1	KITCHEN SINK	2	1 1/4"x1 1/2"	1 1/2"	1/2"	1/2"	④
CM-1	COFFEE MAKER	-	-	-	3/8"	-	⑤
DW-1	DISHWASHER	-	-	-	1/2"	-	⑥
REF-1	REFRIGERATOR	-	-	-	1/4"	-	⑦
WB-1	WATER BOX	-	-	-	1/2"	-	⑧
WF-1	WATER FILTER	-	-	-	3/4"	-	⑨

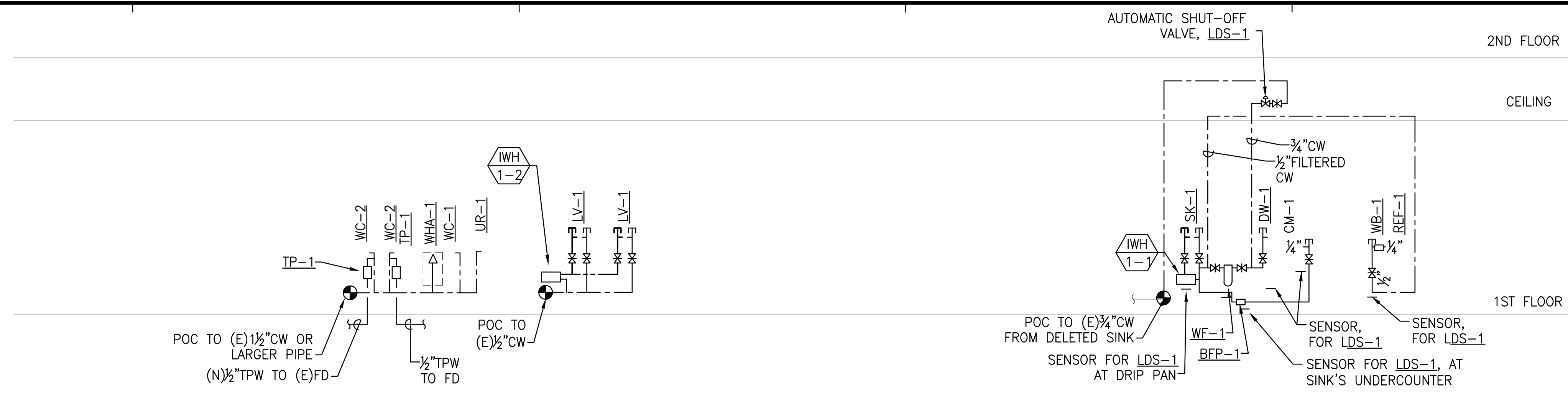
- NOTE:
① SAD FOR SPECIFICATION TO FIXTURE COMPLETE WITH SENSOR FLUSH VALVE AND TOTO SC534 OPEN FRONTLESS SEAT, FLOW RATE TO CONFORM TO CAL-GREEN REQUIREMENT OF 1.28 GPF OR LESS, SEAT TO BE FRONT LESS. SAD FOR MOUNTING HEIGHT OF ADA COMPLIANT WATER CLOSET.
② SAD FOR SPECIFICATION TO FIXTURE AND FLUSH VALVE, FLOW RATE TO CONFORM TO CAL-GREEN REQUIREMENT OF 0.125 GPF OR LESS. PROVIDE AERATOR IF REQUIRED TO MINIMIZE FLOW RATE.
③ SAD FOR SPECIFICATION OF FIXTURE AND FAUCET, FLOW RATE TO CONFORM TO CAL-GREEN REQUIREMENT OF 0.5 GPM OR LESS. PROVIDE AERATOR IF REQUIRED TO MINIMIZE FLOW RATE.
④ SAD FOR SINK AND FAUCET SPECIFICATION. FAUCET SPECIFIED FLOW RATE IS 1.8 GPM, PASS CAL-GREEN REQUIREMENT FOR KITCHEN FAUCET.
⑤ SAD FOR SPECIFICATION, PROVIDED BY OTHERS. CONTRACTOR TO PROVIDE 3/8" FILTERED CW CONNECTION WITH VALVE AND BFP-1.
⑥ SAD FOR SPECIFICATION OF DISHWASHER. DISHWASHER TO BE THE TYPE THAT CAN RUN ON COLD WATER AND HAS AN INTERNAL HEATER. PROVIDE COLD WATER SUPPLY AND TERMINATE DRAIN TO SINK'S TAILPIECE WITH APPROVE AIR GAP.
⑦ SAD FOR SPECIFICATION. PROVIDE 1/4" FILTERED COLD WATER FROM WB-1.
⑧ PROVIDE GUY GRAY MODEL BIM 875
⑨ SEE WATER FILTER SCHEDULE

CODE	MFR	PART NUMBER	MODEL NUMBER	WORKING PRESS. (PSI)	MAX FLOW (GPM)	CONNECTIONS	LOCATION ROOM NO.	NOTES
WF-1	3M	AQUAPURE	55920-01	SST1HA	300	8	3/4" HORIZONTAL	UNDER COUNTER PANTRY 105

DIAGRAM (NOT TO SCALE)

- NOTE:
1. PROVIDE SUPPLEMENTAL SUPPORTS AS REQUIRED TO INSTALL IN UNDER COUNTER CABINET.
2. INSTALL IN VERTICAL POSITION.
3. INSTALL AND FLUSH CARTRIDGES PER MANUFACTURER'S RECOMMENDATIONS.
4. AREA UNDER FILTER ASSEMBLY SHALL BE FREE OF ELECTRICAL DEVICES/ EQUIPMENT.
5. 316 STAINLESS STEEL HEAD.
6. 304 STAINLESS HOUSING.

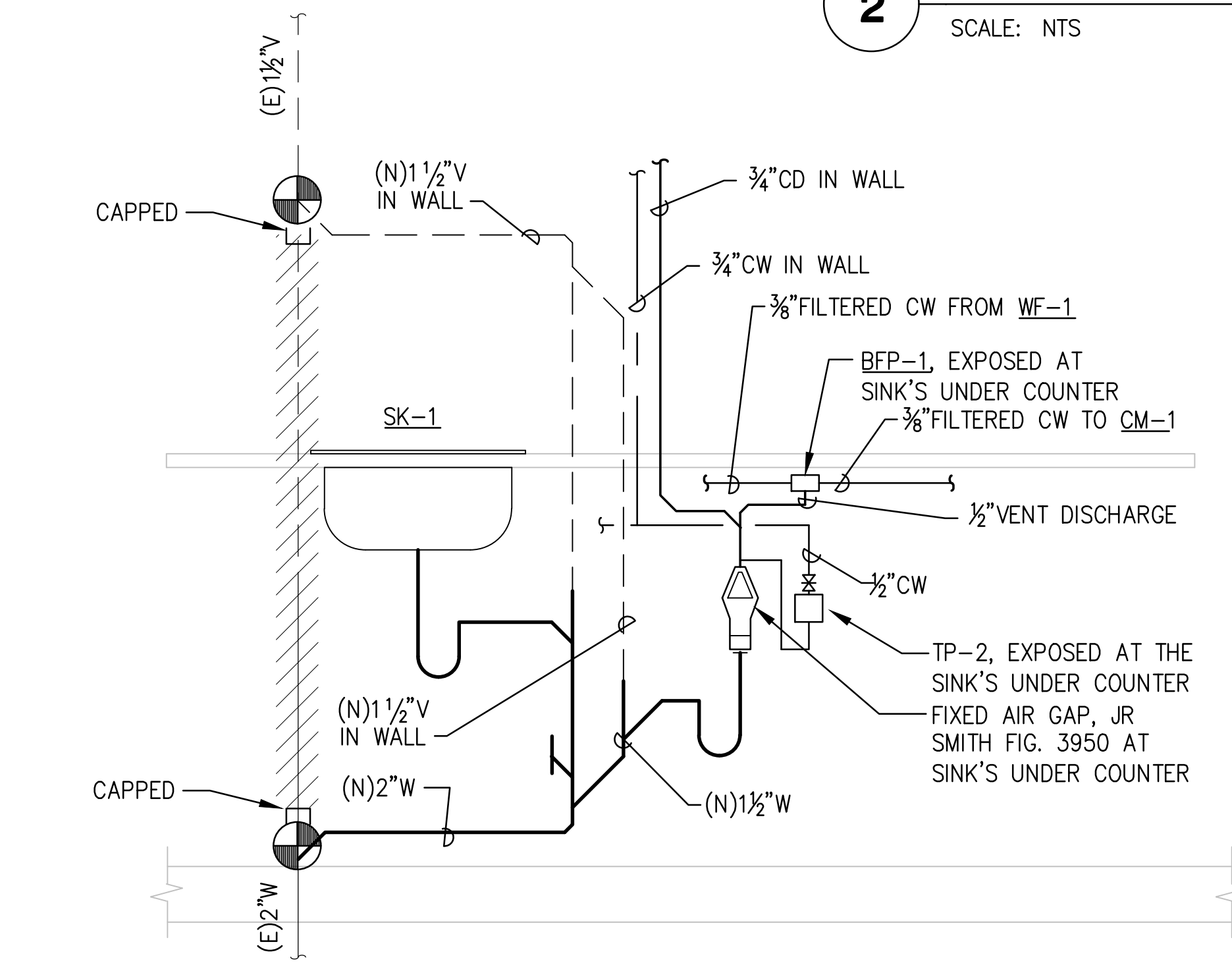
CODE	DESCRIPTION	MANUFACTURER MODEL NUMBER	CONN.	TOP GRATE MATERIAL	GRATE SIZE	REMARKS
WCO-1	WALL CLEANOUT	JR SMITH 4452C	2"-4"	-	-	W/ S/S COVER
FD-1	FLOOR DRAIN	MIFAB F1000-7	2"	-	-	WITH 1/2" TRAP PRIMER CONNECTION
TP-1	TRAP PRIMER	SLOAN VBF-72-A OR APPROVED EQUAL	1/2"	-	-	ATTACHED TO FLUSH VALVE, CONTRACTOR TO PROVIDE SAME MANUFACTURER WITH FLUSH VALVE
TP-2	TRAP PRIMER	MIFAB MR-500	1/2"	-	-	3 PSI ACTIVATION
FCO-1	FLOOR CLEANOUT	JR SMITH 4023S	2"-4"	-	-	ROUND NICKEL, ADJUSTABLE TOP



1 DOMESTIC COLD/HOT WATER RISER DIAGRAM
SCALE: NOT TO SCALE



2 SANITARY WASTE/VENT RISER DIAGRAM
SCALE: NTS



3 INDIRECT DRAIN TERMINATION DETAIL
SCALE: NONE

CODE	DESCRIPTION - FLOOR FINISH	MANUFACTURER	CONN.	REMARKS
BFP-1	BACKFLOW PREVENTER	WATTS MODEL SD-3	1/4"	PROVIDE WITH STRAINER
LDS-1	LEAK DETECTION SYSTEM	FIRST SMART SENSOR INC.; OR APPROVED EQUAL	3/4"	FULLY AUTOMATED WATER LEAK DETECTION AND CONTROL SYSTEM, CONSISTING OF AUTOMATIC SHUT OFF VALVE (SOLENOID), SENSORS AND CONTROL WITH ALARM. SYSTEM SHALL MEET CA AND SF PLUMBING CODES. ENTIRE SYSTEM SHALL BE LEAD FREE. PROVIDE ADAPTER FOR 120V SOURCE
WHA-1	WATER HAMMER ARRESTOR	J.R. SMITH 5010	1	PROVIDE WITH 8"x8" ACCESS PANEL



Stamp



Consultant



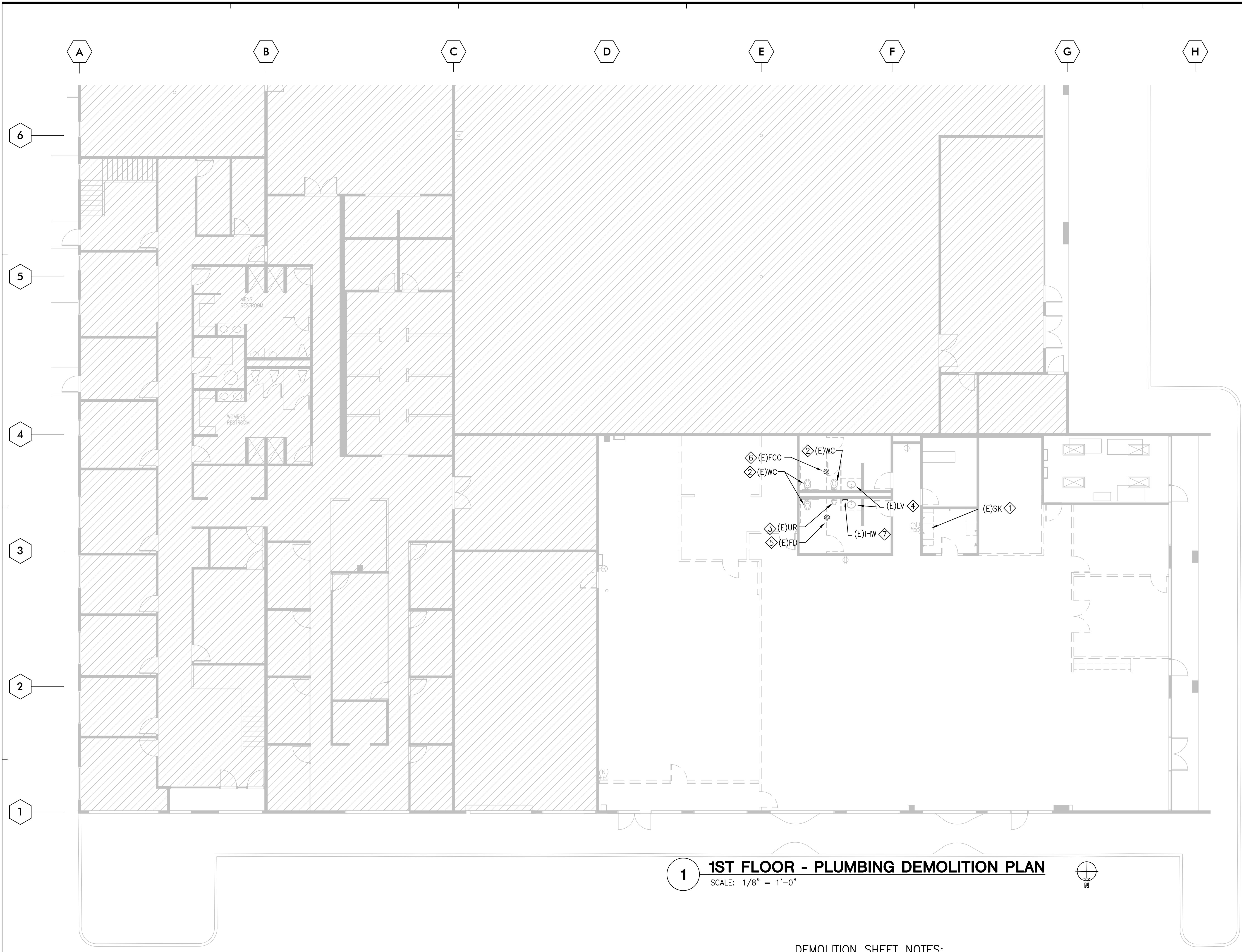
Issue/Revision:

No.	Rev.	Description
1	32243.01	ISSUE FOR REVIEW 24MAR19
2	32243.01	ISSUE FOR PERMIT 22APR19

Copyright Statement:
All drawings and written material appearing herein constitute original and unpublished original work of the architect and may not be duplicated, used, or disclosed without prior written consent of the architect.
Approval Signature:

Co./ Title: Date:

**1ST FLOOR -
PLUMBING
DEMOLITION PLAN**



1 1ST FLOOR - PLUMBING DEMOLITION PLAN
SCALE: 1/8" = 1'-0"

GENERAL NOTES:

- SAD FOR OTHER DEMOLITION NOTES.

DEMOLITION SHEET NOTES:

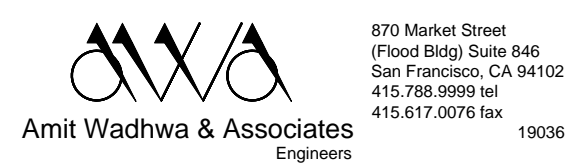
- ① THIS FIXTURE TO BE DEMOLISHED/REMOVED, INCLUDING ALL THE PIPING CONNECTED TO THIS FIXTURE. COORDINATE WITH BUILDING ENGINEER FOR PROPER DISPOSAL OF (E)FIXTURE AND EQUIPMENT. CAP EXISTING VENT, COLD WATER AND WASTE PIPING INSIDE THE WALL FOR FUTURE USE.
- ② (E)WATER CLOSET TO BE REMOVED, PIPING CONNECTED TO THIS FIXTURE SHALL BE CAPPED INSIDE THE CAVITY/WALL, CARRIER/SUPPORT TO BE REMOVED.
- ③ (E)URINAL TO BE REMOVED, INCLUDING BACKING SUPPORT, ETC.; PIPING CONNECTED TO THIS FIXTURE SHALL BE CAPPED INSIDE THE CAVITY/WALL.
- ④ (E)LAVATORY TO BE REMOVED. HOT AND COLD WATER PIPING; WASTE AND VENT CONNECTED TO THIS FIXTURE SHALL BE CAPPED INSIDE THE CAVITY/WALL.
- ⑤ (E)FIXTURE TO REMAIN, INCLUDING ALL THE PIPING, VENT AND TRAP PRIMER, CONNECTED TO THIS FIXTURE. CONTRACTOR TO TEST IF TRAP PRIMER IS WORKING PROPERLY, REPLACE TRAP PRIMER AS REQUIRED.
- ⑥ (E)FCO TO REMAIN.
- ⑦ (E)IWH, INSTANTANEOUS WATER HEATER, TO BE REMOVED, INCLUDING ALL THE PIPING CONNECTED TO THIS EQUIPMENT. COORDINATE WITH BUILDING ENGINEER FOR PROPER DISPOSAL OF THIS EQUIPMENT.



Stamp



Consultant



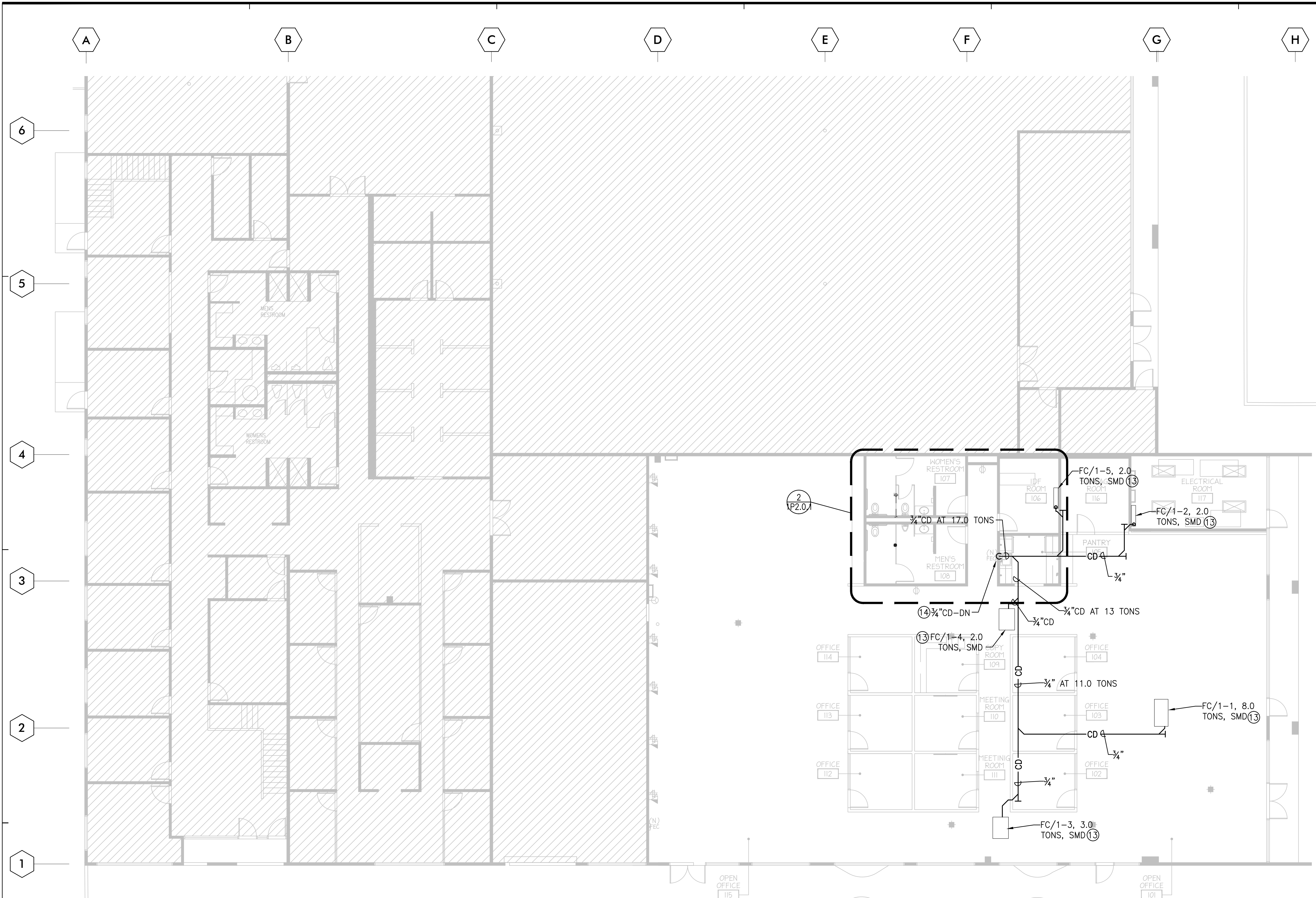
Issue/Revision:

No.	Rev. No.	Description
1	32243.01	ISSUE FOR REVIEW 24MAR19
2	32243.01	ISSUE FOR PERMIT 22APR19

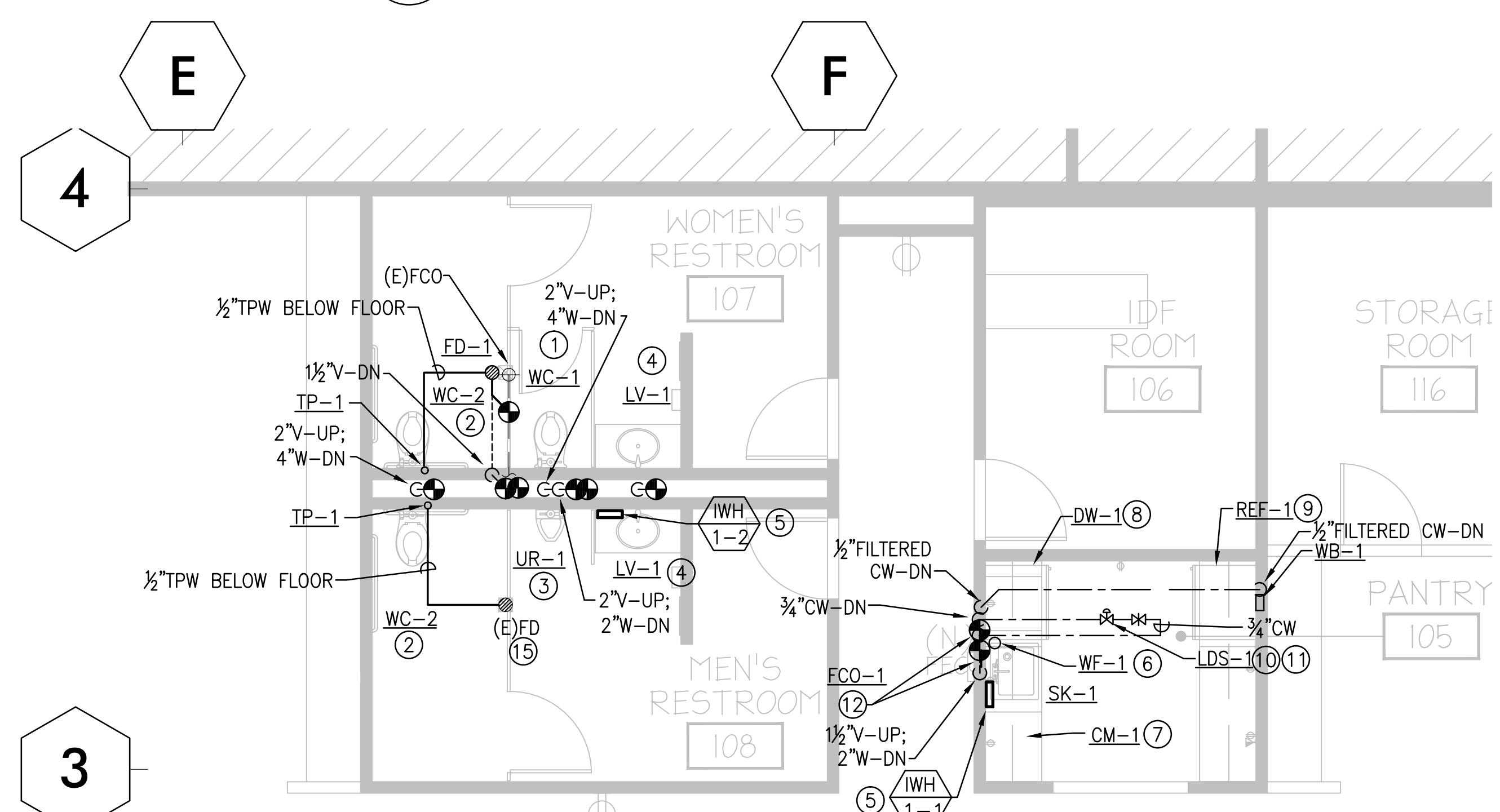
Copyright Statement:
All drawings and written material appearing herein constitute original and unadulterated original work of the architect and may not be duplicated, used, or disclosed without prior written consent of the architect.
Approval Signature:

Cv/ Title: Date:

**1ST FLOOR -
PLUMBING
FLOOR PLAN**



1 1ST FLOOR - PLUMBING FLOOR PLAN
SCALE: 1/8" = 1'-0"



2 ENLARGED PLUMBING PLAN
SCALE: 1/4" = 1'-0"

PLUMBING GENERAL NOTES:

1. FIELD VERIFY ALL POINTS OF CONNECTION.
2. SEE PLUMBING DIAGRAMS FOR PIPE SIZES.
3. SEE ARCHITECTURAL DRAWINGS FOR EXACT LOCATION OF PLUMBING FIXTURES.
4. ALL NEW COLD WATER SUPPLY LINE SHALL BE COPPER.
5. PROVIDE CODE REQUIRED SLOPE FOR ALL NEW WASTE LINES.
6. COORDINATE WITH ARCHITECT ALL ACCESS PANEL THAT IS REQUIRED.

PLUMBING SHEET NOTES:

- 1 (N)WATER CLOSET, PROVIDE 1/2" CW, 2" V & 4" W CONNECTION FROM (E) UTILITIES IN THE WALL, PROVIDE WHA-1 BEFORE CONNECTING TO THE LAST WATER CLOSET. PROVIDE (N)CARRIER/SUPPORT.
- 2 SAD FOR ADA WATER CLOSET AND MOUNTING HEIGHT. PROVIDE (N)CARRIER/SUPPORT.
- 3 (N)URINAL, PROVIDE 3/4" CW, 2" V & 2" W CONNECTION FROM (E)UTILITIES IN THE WALL, SAD FOR ADA URINAL AND MOUNTING HEIGHT. PROVIDE (N)BACKING SUPPORT.
- 4 (N)LAVATORY, PROVIDE 1/2" HW, 1/2" CW, 1 1/2" V & 2" W FROM (E) UTILITIES IN THE WALL, LIMIT HW OUTLET TO ADA LAVATORY AT 110", PROVIDE THERMOSTATIC MIXING VALVE AS REQUIRED.
- 5 PROVIDE INSTANTANEOUS TYPE WATER HEATER UNDER THE COUNTER. PROVIDE VALVED COPPER LINE 1/2" CW CONNECTION TO THE HEATER. PROVIDE SHEETMETAL DRIP PAN WITH 2" LIP UNDER THE WATER HEATER.
- 6 PROVIDE UNDER THE COUNTER, SEE RISER DIAGRAM AND SCHEDULE FOR DETAIL. PROVIDE 3/4" CW CONNECTION WITH VALVE.
- 7 COFFEE MAKER, COORDINATE EXACT LOCATION WITH ARCHITECT, CONTRACTOR TO PROVIDE 1/2" FILTERED WATER COPPER CONNECTION WITH VALVE AND BFP-1
- 8 DISHWASHER, SAD FOR SPECIFICATION. PLUMBING CONTRACTOR TO PROVIDE 1/2" CW CONNECTION AND PROVIDE APPROVE DIRECT CONNECTION TO THE WASTE PER REQUIREMENT OF THE PLUMBING CODE. DISHWASHER TYPE, CAN RUN ON COLD WATER SUPPLY ONLY WITH INTERNAL HEATER.
- 9 REFRIGERATOR, PROVIDE 1/4" FILTERED CW FROM WB-1.
- 10 AUTOMATIC SHUT OFF VALVE OR SOLENOID VALVE FROM LDS-1, PROVIDE COMPLETE OPERATING FLOOD STOPPER SYSTEM, HARD WIRED. SYSTEM SHALL BE A FULLY AUTOMATED WATER LEAK DETECTION AND CONTROL SYSTEM. SYSTEM SHALL MEET CA AND SF PLUMBING CODES. ENTIRE SYSTEM SHALL BE LEAD FREE. PROVIDE AUDIBLE ALARM. SOLENOID VALVE SHALL INCORPORATE AUTOMATIC RESET. ALL COMPONENTS SHALL BE HARD-WIRED AND NOT BATTERY OPERATED.
- 11 PLACE SENSORS ON THE FLOOR UNDER THE SINK CABINET, DISHWASHER, ETC. (UNDER ALL APPLIANCES) AND DRAIN PAN OF WATER HEATER. UPON WATER LEAK DETECTION, THE CONTROL PANEL SHALL SHUT OFF THE WATER SUPPLY TO ALL WET AREAS VIA AN AUTOMATIC SOLENOID VALVE.
- 12 FIELD VERIFY LOCATION OF (E)VENT AND WASTE FROM DELETED SINK; PROVIDE CONNECTION AS SHOWN.
- 13 MECHANICAL UNITS WITH CD PUMP, SMD FOR SPECIFICATION.
- 14 TERMINATE WITH AIR GAP FITTINGS, SEE P1.0.
- 15 PROVIDE (N)1/2" TRAP PRIMER AT EXISTING FLOOR DRAIN, IF NONE EXISTS AT PRESENT. TRENCHING WILL BE REQUIRED.