

Diving into air pollution data with ArcGIS online tool

West Oakland AB617 Steering Committee Meeting
October 3rd, 2018



Content

1. What's in the mapping tool
2. How to use the tool
3. Where did the data come from
4. What information or insights can you get from the tool

Click link to go to online map

<https://arcg.is/1Cf50L>

1. What's in the mapping tool

What's in the mapping tool

- Data layers include (so far)
 - Google/EDF air pollution collected during mid-2015 to mid-2016
 - Kaiser/EDF health risk analysis results
 - Sensitive receptor locations such as schools, childcare centers, senior housing and care facilities
 - Locations of truck related businesses and truck routes
- Developed with input from WOEIP
- Use publicly available data
- More data can be added
- Access on browser, no account or login needed

2. How to use the tool

- Layers**
- Child Care Centers (licensed by California Dept of Social Services)
 - Oakland Schools (OUSD)
 - Senior Housing and Centers
 - Residential Care Facilities for Elderly (licensed by California Dept of Social Services)
 - Estimated pollution(NO2)-related cardiovascular risk for the elderly (65+)
 - Residential Parcels
 - Truck magnets (shipping, trucking and transport)
 - Prohibited Truck Routes
 - Designated Truck Routes
 - BC (micrograms per m3)
 - BC 50th percentile
 - BC 75th percentile
 - BC 90th percentile
 - NO2 (ppb)
 - NO2, 50th percentile

Click on Layers to see the list of all Data Layers available

Check box to make layer appear. You can check multiple boxes. For example, here the Black Carbon and Truck Magnets layers are checked.



Legend

Truck magnets (shipping, trucking and transportation businesses)



BC (micrograms per m3)

BC_Value

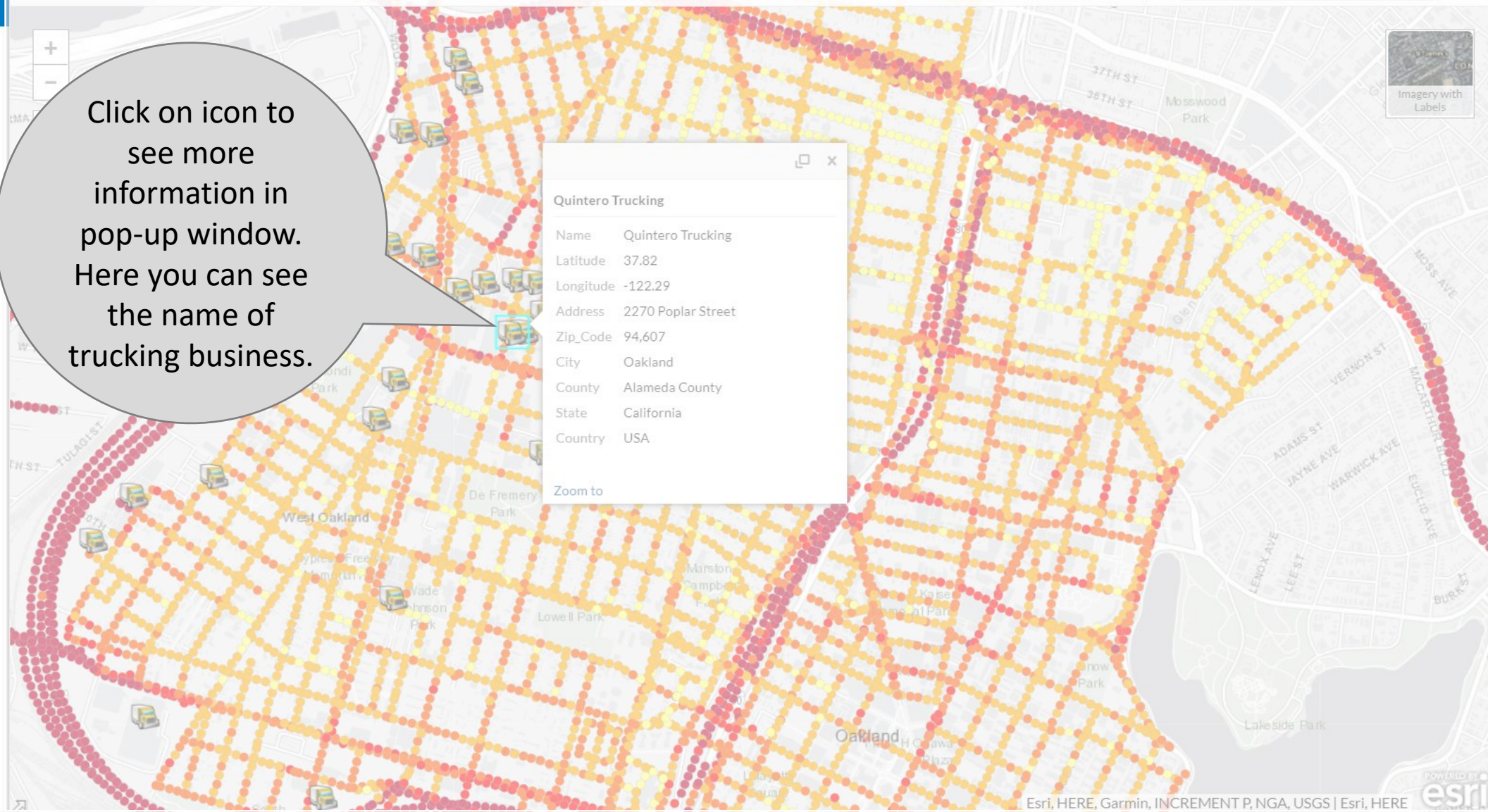
- > 1 - 8
- > 0.75 - 1
- > 0.5 - 0.75
- > 0.25 - 0.5
- 0 - 0.25



Quintero Trucking

Name	Quintero Trucking
Latitude	37.82
Longitude	-122.29
Address	2270 Poplar Street
Zip_Code	94,607
City	Oakland
County	Alameda County
State	California
Country	USA

Zoom to



3. Where did data come from

West Oakland Air Pollution Maps

Last modified 9/26/18, 10:55 AM

211 views.

[More information](#)



Truck-Attracting Businesses

- Overview
- Data
- Visualization



Shipping, Trucking, and Trans
 Feature Layer by [gzayasdelrio](#)
 Created: Sep 24, 2019



Description

Source: West Oakland Works <http://www.westoaklandworks.com/our-directory>
 From the West Oakland Works list we selected businesses categorized as "shipping, trucking, and transportation" to include in this data layer. Data may be incomplete and/or not fully updated.

Layers

Truck_Businesses

Terms of Use

No special restrictions or limitations on using the item's content have been provided.

[Open in Map Viewer](#)

Details

Source: [Feature Collection](#)
 Size: 33 KB
 ★★★★★



Owner

[gzayasdelrio_edfmaps](#)

Tags

[Oakland](#), [trucks](#), [magnets](#)

Credits (Attribution)

No acknowledgements.

Several data layers came from results of studies conducted by EDF and partners

← → ↻ 🏠 🔒 https://e

- Child Care Centers (licensed by California Dept of Social Services)
- Oakland Schools (OUSD)
- Senior Housing and Centers
- Residential Care Facilities for Elderly (licensed by California Dept of Social Services)
- Estimated pollution(NO2)-related cardiovascular risk for the elderly (65+)**
- Residential Parcels
- Truck magnets (shipping, trucking and transportation businesses)
- Prohibited Truck Routes
- Designated Truck Routes
- BC (micrograms per m3)
- BC 50th percentile
- BC 75th percentile
- BC 90th percentile
- NO2 (ppb)
- NO2, 50th percentile
- NO2, 75th percentile
- NO (ppb)

Background on West Oakland Air Pollution Studies

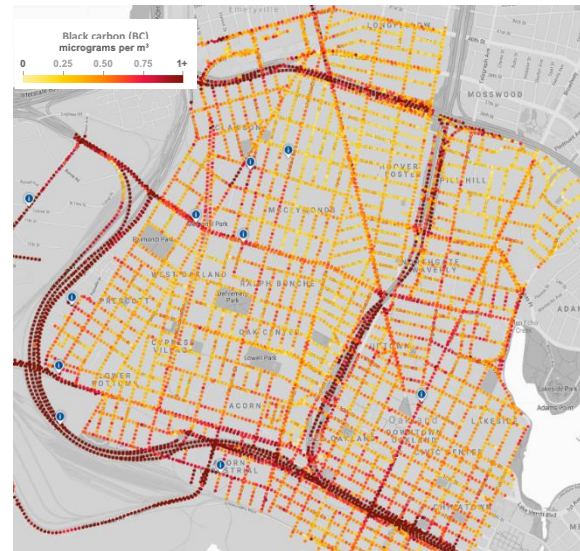
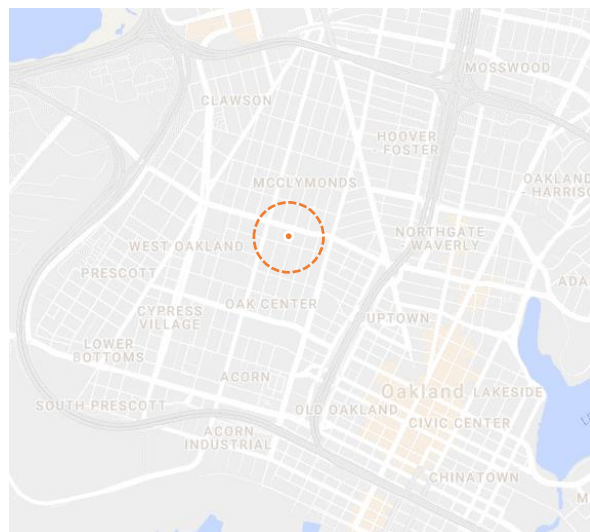
Regulatory air pollution monitoring for West Oakland, CA: 1 stationary site



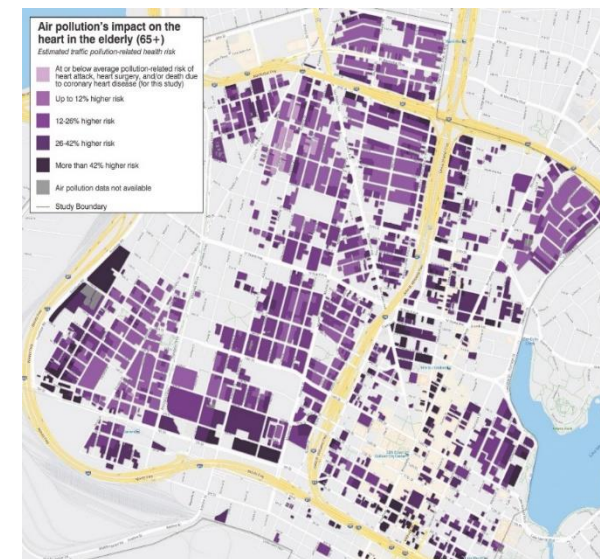
Data: 1 year of air pollution measurements (BC, NO, NO₂) using fast response sensors on Google Street View cars.



Data: Electronic medical records of 41K people insured by Kaiser Permanente health care, linked with air pollution at residential address.



Finding: Within West Oakland, some areas had **5-8 times** higher median pollution levels than others. Many parts of the neighborhood had higher air pollution than levels measured at the central regulatory monitor.



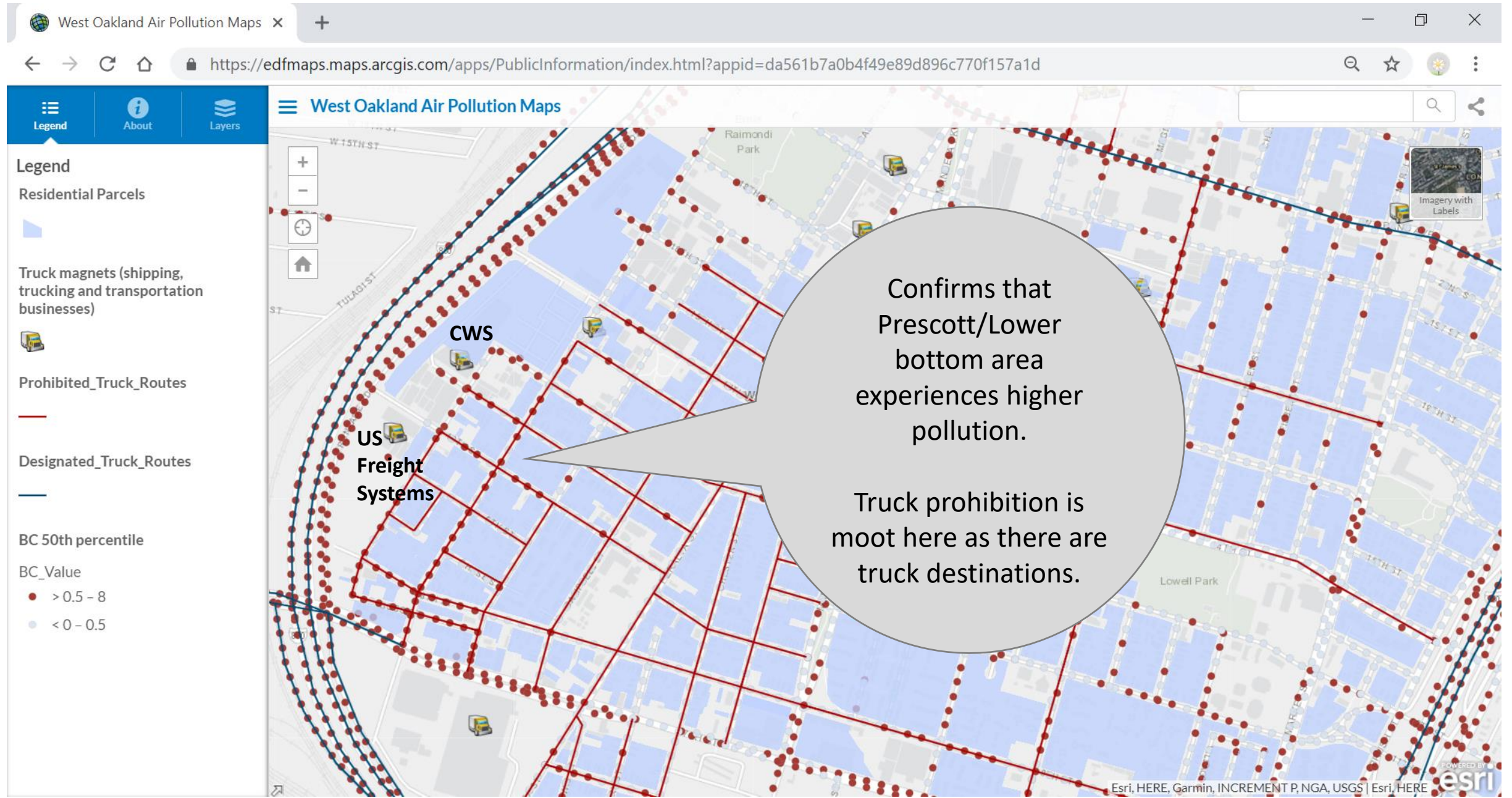
Finding: Elderly residents (age 65+) living in areas of West Oakland with the highest concentrations of NO₂ would have **>40% greater risk** of a cardiovascular disease event than those in less polluted areas of the neighborhood.

4. What information or insights can you get from the tool

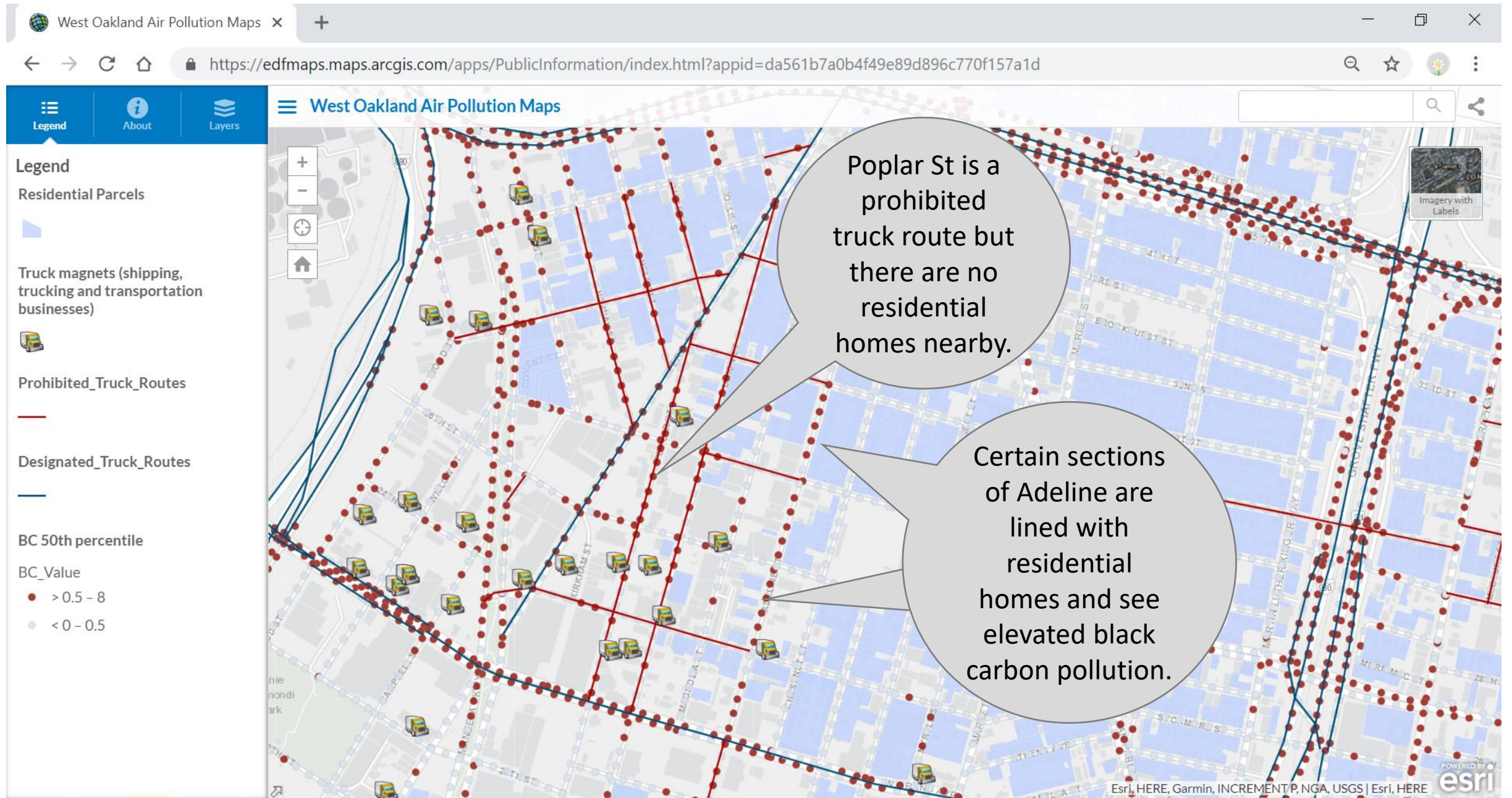
Example 1: Where black carbon levels are higher than area median & schools/child care centers



Example 2: Areas where black carbon levels is above area median, truck routes & truck magnets, and where people live



Example 3: Potential impact on residents who live near industrial zone and where trucks frequent





Contact us

Fern Uennatornwarangoon
Air Quality Project Manager, EDF
T 415 293 6162
FernU@edf.org

Maria Harris, PhD
Environmental Epidemiologist
T 415 293 6164
mharris@edf.org