

RICHMOND - NORTH
RICHMOND - SAN PABLO
COMMUNITY

PATH TO

CLEAN AIR

**Community Emission Reduction Plan (CERP)
Community Steering Committee Meeting #29**

October 23, 2023

Welcome

Karissa White, BAAQMD

RICHMOND - NORTH
RICHMOND - SAN PABLO
COMMUNITY **PATH TO**
CLEAN AIR

Agenda

TIME	TOPIC
5:30 PM	Welcome, Meeting Logistics, Agenda
5:45 PM	Meeting Minutes from September 25, 2023
5:55 PM	Ad Hoc Updates <ul style="list-style-type: none"> ● Problems to Solutions <ul style="list-style-type: none"> ○ Overview of Chapters Reviewed including Chapter 7 (CERP Strategies and Actions) ● Governance Ad Hoc <ul style="list-style-type: none"> ○ New Applications on Hold until CERP is Adopted, Recruiting to Begin for Implementation Phase of CERP ○ CSC Member Stepping Down
6:05 PM	Community Engagement and Outreach Standing Committee <ul style="list-style-type: none"> ● Outreach Strategy: Goals, Timeline and Approach ● Overview of Presentation Materials Available to Members ● Outreach List
6:10 PM	Mock Community Engagement and Outreach Standing Committee CERP Presentation <ul style="list-style-type: none"> ● Breakout Group Discussion
7:05 PM	Public Comment: Need/Purpose and Expected Timeline <ul style="list-style-type: none"> ● Need and Purpose of Public Comment Period ● How Public Comment and Response to Comments Typically Works ● Timeline for PTCA CERP Public Comment
7:20 PM	Environmental Justice Updates
7:25 PM	Next Steps and Meeting Close

Path To Clean Air Meeting Format






Member expectations:

- Be respectful and open to other points of view
- Review all materials prior to the meeting
- Use the raise hand feature in zoom
- Speak only when Co-Chairs and/or facilitator calls on you during discussions and public comment

Meeting procedures:

- Begin each meeting by taking roll call to establish a quorum
- Ask for public comment before taking any action
- Any member can make a motion which then has to be seconded by another member
- Co-chairs adjourn

Where are We Today?

Phase		Work Product		2023						2024			
				Q1	Q2	Jul	Aug	Sept	Oct	Nov	Dec	Q1	Q2
 SCOPE AND ORGANIZE PARTNERSHIP WITH COMMUNITY	Steering Committee (CSC)	»»»											
	Plan Process												
	Vision and Principles												
	Plan Boundary												
 ASSESS THE CHALLENGES	Community Description												
	Technical Assessment												
 PLAN OUR SOLUTIONS	Key Issues												
	Strategies								☑				
	Goals & Target			🚩			☑						
 COMMUNITY OUTREACH	Community Education						🚩		☑				
	Community Engagement						🚩		☑				
	Community Feedback									🚩	☑		
 PLAN REVIEW & ADOPT	Draft Plan Complete							☑					
	Draft Plan Translated									☑			
	Plan Adoption - CSC											☑	
	Plan Adoption - BAAQMD												☑
	Plan Adoption - CARB												

 INTRODUCTION TO THE STEERING COMMITTEE
  DECISION MADE

Approval of September 25, 2023 Meeting Minutes

Alfredo Angulo, CSC Co-Chair



Public Comment

Alfredo Angulo, CSC Co-Chair



Problems to Solutions Ad Hoc Updates

Dr. Omoniyi Omotoso, CSC Member

RICHMOND - NORTH
RICHMOND - SAN PABLO
COMMUNITY **PATH TO**
CLEAN AIR

Overview of Chapters Reviewed including Chapter 7 (Path to Clean Air (PTCA) Plan Strategies and Actions)

Chapter 5 - Air Pollution Overview

- Review complete

Chapter 6 - Air District Enforcement Overview & Findings

- Review complete

Chapter 7 - Key Issues and Strategies

- Review complete. Executive Management is socializing strategies with the CEHJ Co-chairs.

Chapter 9 - Implementation and Reporting

- P2S Ad Hoc Review complete

Governance Ad Hoc Updates

Nancy Aguirre, CSC Member



CSC Applications and Recruiting

Status of New Applications until CERP is Adopted

- Any new applications will be placed on hold.

Timeline for Next Recruiting Process

- Next recruiting stage/application review will begin after PTCA Plan Implementation stage (early Spring 2024).

CSC Member Stepping Down

- Roberta Feliciano stepped down from the CSC as of October 6th.
- Interest in joining the CSC as a resident.

Steering Committee Management Structure

Next Steps: Future Charter Amendments / Additions

- Leadership model (In process)
 - Term limits
 - Roles and Responsibilities
 - Election of Leadership i.e., includes vacancies
- Onboarding process for new members (Incorporate in the Charter)
- Annual commitments of all steering committee members
- Attendance and participation of all steering committee members

Steering Committee Questions and Discussions

Alfredo Angulo, CSC Co-Chair



Public Comment

Alfredo Angulo, CSC Co-Chair



Community Engagement and Outreach Standing Committee

Dave Severy, CSC Member

RICHMOND - NORTH
RICHMOND - SAN PABLO
COMMUNITY **PATH TO**
CLEAN AIR

Outreach Strategy: Goals, Timeline and Approach

Goals

1. To educate people living and working in the Plan area about the Community Steering Committee (CSC), the Path To Clean Air (PTCA) Plan that was co-written by the CSC and why this work matters
2. To inspire people to take action to support the draft Plan during the comment period
3. To understand and document how the community feels about the draft Plan, and whether it is aligned with their needs

Approach → CSC Members Use their Networks to Build Support for the PTCA Plan

Outreach Strategy: Goals, Timeline and Approach (Cont.)

Priority Communities

- Neighborhood groups such as the Iron Triangle, Santa Fe, North Richmond
- Youth
- Staff from local public agencies
- Local elected officials from the public agencies named in the plan

Timeline - Now Through Close of Comment Period

Overview of Presentation Materials and Outreach List

Resources

- [Email template](#), [phone script](#) and [elevator pitch](#)
- [Flyer/ Fact sheet](#) both in English and Spanish
- [FAQ](#) (Internal use only. Not a public document)
- [Powerpoint deck](#) (short and long version)

Outreach tracking

- Please don't forget to use the [tracking sheet](#) to capture: who you plan on talking to you, meeting secured, dates, and outcomes of meeting/conversation.

Review Community Engagement and Outreach Standing Committee Presentation

Suzanne Coffee, CSC Member



Presentation Slide

- Background
- Why was the Path to Clean Air area selected for a community emissions reduction plan?
- Plan Process
- Community Concerns
- Air Pollution Health Impacts
- Air Pollution Overview
- Example Actions from the Draft Path to Clean Air Plan
- How to get Involved?

Background

Community Air Protection Program (AB-617)

- State-mandated community air protection program
- Community-based approach to improve community health by reducing exposure to air pollution in the most impacted neighborhoods through the development of Community Emission Reduction Plans

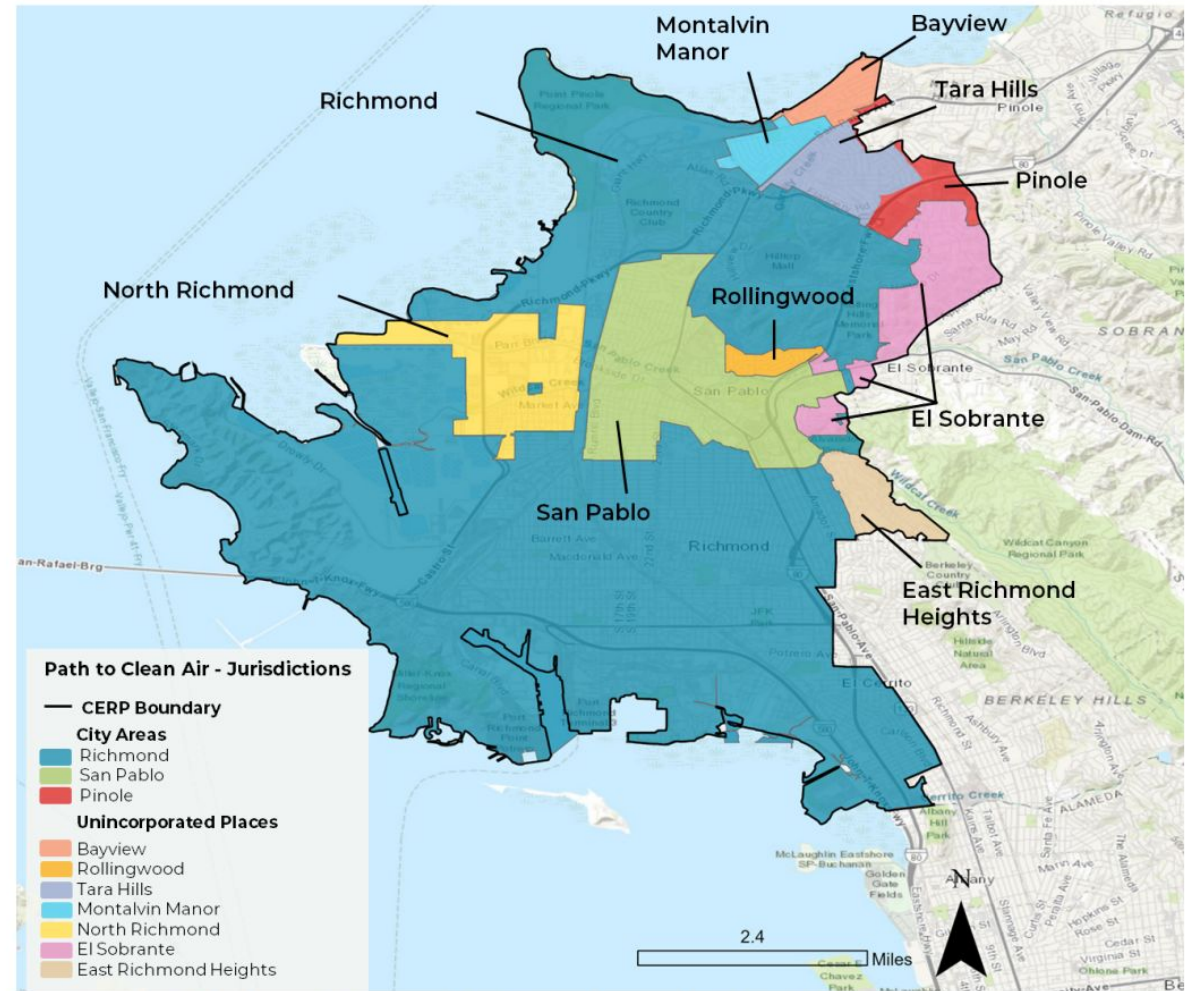
Community Emission Reduction Plan

- Plan, co-developed with community, that contains new actions (e.g., regulations, enforcement, incentives, enforceable agreements) that go beyond existing efforts to further reduce air pollution disparities
- Adopted by the Air District Board of Directors

Why was the Path to Clean Air area selected for a community emissions reduction plan?

The cities of Richmond and San Pablo, and several unincorporated areas in Contra Costa County are **severely impacted by air pollution from:**

- Ports
- Ships
- Marine terminals
- Railroads and railyards
- 18-wheeler heavy-duty trucks
- Congested freeways
- Chevron Refinery
- West Contra Costa County Landfill
- Chemtrade
- Sims Metal
- other industrial and commercial operations



Community Emission Reduction Plan Boundary and Jurisdictions

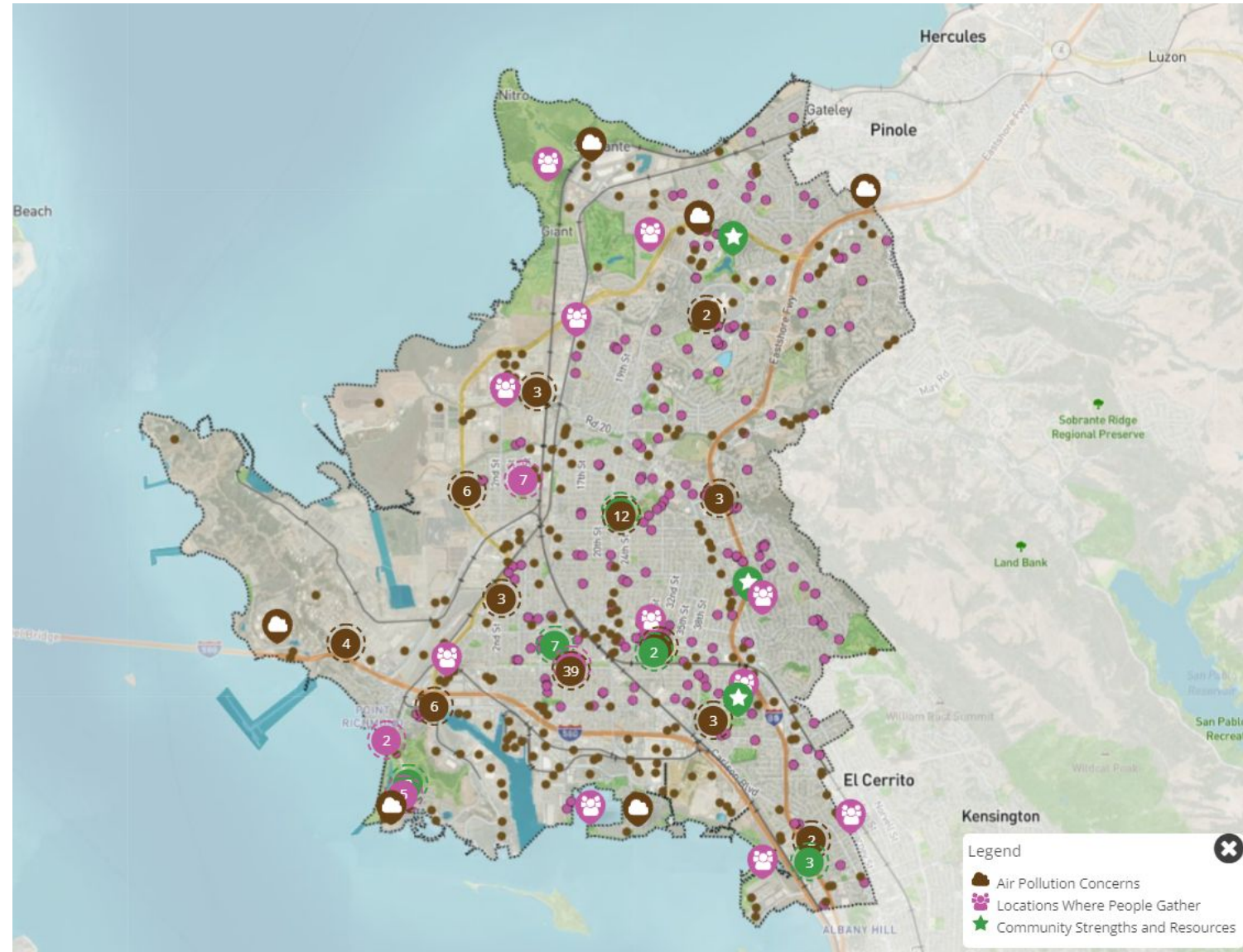
Plan Process



Community Mapping to Identify Issues & Assets

- Led by six nonprofit organizations from across the focus area
- Over 500 comments
- Health-related words and physical reactions to air pollution were the most commonly recurring themes throughout the Community Assets and Air Pollution Mapping Project.

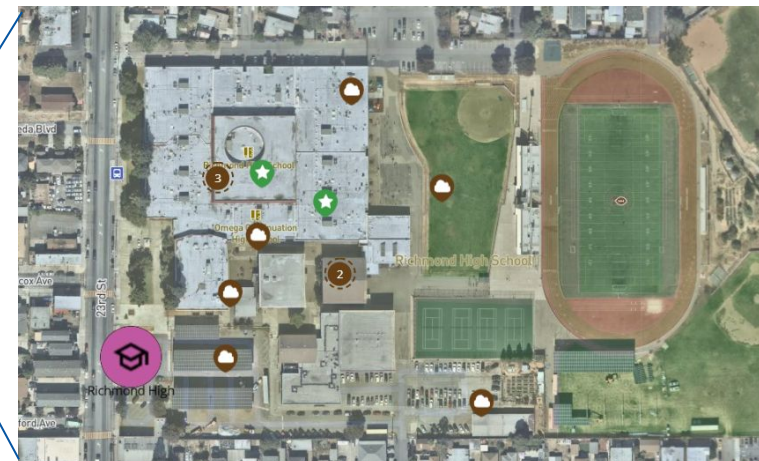
'Health' was mentioned 70 times
'Asthma' was mentioned 69 times
'Can't breathe' was mentioned 52 times
'Lungs' were mentioned 31 times
'Sick' was mentioned 16 times
'Respiratory' was mentioned 12 times
'Cough' was mentioned 10 times
'wildfire' was mentioned 10 times
'Allergy' was mentioned 9 times
'Woodsmoke' was mentioned 8 times
'Inhaler' was mentioned 7 times...



Community Voices

“Most nights I can smell nasty stuff in the air, I live right across from Chevron”

“There was a gas leak in our community which caused our school to shut down and prevent us from learning. It was on Monday morning and today, Thursday October 28.”



“Richmond Youthworks gives teenagers jobs/internships, and allows them to grow.”

“it smells like rubber and plastic”

“Asthma makes it hard to breathe when there are fires.”

“Unity Park is an important legacy of environmental justice advocates in Richmond.”

“I like the Richmond Public Library because I can take my kids here to read books or do other activities”

“A lot of dark smoke and a strong smog smell coming from the trains that pass here all day everyday. Trains are coming by at least twice every hour at all hours of the day.”

“Heavy trucks and construction vehicles plow through, usually on their way to infrastructure and construction projects or deliveries -- EBMUD, PGE, ATT, Amazon, UPS, FedEx etc etc.”

Community-Identified Pollution Concerns



Emissions from the refinery



Trucks can be a major source of diesel pollution



Tugboats operating offshore may have older engines and be a significant source of diesel pollution



Construction and demolition can be a major source of particulate matter emissions



Wildfire exposure is dangerous, especially for families without proper preparation and resources

Slide adapted from:
PTCA Community
Steering Committee #11
(February 2022)

Air Pollution is Known to Contribute to:

- ☁ Impaired lung growth in children
- ☁ Increased asthma, coughs and bronchitis
- ☁ Impairment of brain development in babies and small children
- ☁ Low birth weight and adverse birth outcomes
- ☁ Heart attack and stroke
- ☁ Upper respiratory track irritation and infection
- ☁ Worsening of existing health problems in people with chronic disease

People most susceptible



Children



Pregnant women
and unborn children



Elderly people



People with
chronic disease

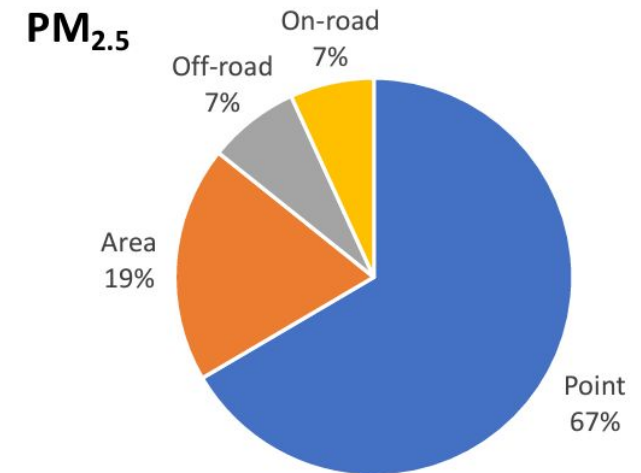


Communities of
color

Source:
PTCA Community Steering Committee #13 (April 2022)
*Slide adapted with permission from Dr. Radhakrishna
(CCHS)*

Air Pollution Overview

- The technical assessment, or emissions inventory, estimates how much pollution is being produced by different sources in the community
- Fine particulate matter (**PM_{2.5}**) is a focus of the plan because of its health impacts; it is so small that it can **travel deep into the lungs and bloodstream** and **contributes to cancer, heart attack, stroke, and other respiratory diseases**
- The pie chart shows two-thirds of fine particulate matter comes from *permitted* sources
- Chevron is contributing the lion's share of PM_{2.5} in the plan area
- There are many other sources of pollution in the area (ships, marine terminals, industrial activities, vehicle traffic, etc.) that contribute a variety of air toxins in addition to PM_{2.5}



Permitted (point) sources contributions to total emissions range from 19% to 83% for the pollutants shown

Source:
PTCA Community Steering Committee #12 (March 2022)

Turning Problems into Solutions

Path to Clean Air Plan Draft Goals

The **Path to Clean Air Plan** is directed by a community steering committee, made up of people who work, live or grew up in the area, has met monthly since 2021 to discuss sources of pollution, impacts from pollution, ways to reduce pollution, and community priorities to improve air quality and public health. The result of this effort is the forthcoming draft Plan.

The Plan is focused on five community concerns and includes strategies centered on these priority sources:

- Mobile
- Public Health
- Marine and Rail
- Commercial and Industrial
- Fuel Refining

Other topics the plan addresses:

- Land Use
- Urban Greening
- Compliance and Enforcement

Just Transition: In pursuit of our right to breathe clean air, promote environmental justice, and ensure the well-being of our residents and workers, our community-driven emissions reduction plan is rooted in Just Transition principles. This plan seeks to address the consequences of historical racial disparities by developing more stringent air pollution policies that advance social healing and restoration.

Health: In pursuit of reducing historically high rates of asthma, cancer, and other chronic health conditions, our plan seeks to lower our community's disproportionate exposure to air pollution by reducing toxic emissions from local sources by 30-50% by 2035.

Community Engagement: Through education and engagement, our plan aims to empower our community by providing resources and tools to promote understanding of air pollution and its impact on our health and environment.

Hold Government Accountable: Our goal is to hold our government accountable for implementing our plan, including its strategies and actions, to protect our health and environment and effectively enforce regulations on high-polluting industries and other toxic sources of emissions in our community.

Example Actions

Community Concern	Example Plan Actions
Mobile (freight trucks, cars)	<ul style="list-style-type: none">● Heavy-duty truck management (such as designating truck routes and installing design deterrents to prevent trucks from using residential streets)● Invest in zero emission bus fleets● Street sweeping (to limit road dust)
Public Health and Reducing Exposures	<ul style="list-style-type: none">● Reduce vulnerabilities to air pollution by expanding health care● Reduce exposure in homes by upgrading windows and installing air filtration systems
Marine and Rail	<ul style="list-style-type: none">● Update rules for ocean going vessels (container and bulk cargo ships) to improve control technology● Implement locomotive regulations to regulate emissions from freight rail operations, prioritizing zero emission technology● Advocate for the State to establish more stringent rules to require zero emission cargo handling equipment at ports and railyards

Example Actions

Community Concern	Example Plan Actions
Commercial and Industrial Near Community	<ul style="list-style-type: none"> ● Use best practices to control dust at commercial and industrial businesses ● Require more stringent review of industrial businesses proposed to be located near residential uses ● Address permitted facilities through education and outreach; continued and enhanced collaboration; reviews of emissions; and potential amendments to Permitting Rules
Fuel Refining	<ul style="list-style-type: none"> ● Update rules to reduce emissions and exposure from all fuel refining sources feasible (including via best available control technologies) and thoroughly engage the public and the community steering committee in the process ● Reduce toxics-based risk from major existing facilities including Chevron and Chemtrade. Evaluate risk reduction approaches for particulate matter health impacts as well ● Hold fuel refining industry accountable via enhanced compliance and enforcement, legal approaches and penalties, permitting, monitoring and measurements ● Reduce flaring activity and better respond to and inform the public about major incidents

Example Actions

Community Concern	Example Plan Actions
Land Use and Urban Greening	<ul style="list-style-type: none">● Plant trees in priority neighborhoods (near freeways and within the “fenceline” of industrial facilities)● Update regulations to buffer residents from sources of pollution such as freeways and industrial uses (by requiring developers to install air filtration systems and locate windows, balconies and plazas away from pollution sources)
Compliance & Enforcement	<ul style="list-style-type: none">● Develop an education and outreach campaign to inform the community about the Air District Complaints System● Investigate targeted facilities of concern● Update the community on enforcement activities

How can local residents and interested parties get involved?

The success of the plan depends on continued participation and activism of the Richmond, North Richmond and San Pablo community.

- Register to receive regular electronic email updates by visiting the [project webpage](#) (and scroll to the bottom of the page)
- Attend the public (virtual) Community Steering Committee meetings; visit the [calendar of meetings webpage](#) and look for the “Path to Clean Air Community Emissions Reduction Plan Steering Committee”
- Look out for calls to action

Breakout Room Activity

- Room 1
- Room 2
- Room 3

Steering Committee Questions and Discussions

Alfredo Angulo, CSC Co-Chair



Public Comment

Alfredo Angulo, CSC Co-Chair



Public Comment: Need/Purpose and Expected Timeline

Alicia Parker, BAAQMD

RICHMOND - NORTH
RICHMOND - SAN PABLO
COMMUNITY **PATH TO**
CLEAN AIR

Public Comment on Draft PTCA Plan

The comment period is expected to extend from Dec. 4 to Jan. 15.

During the comment period, the CSC will use their networks to build support for the Draft PTCA Plan by attending meetings and making announcements about the Draft Plan

What types of comments can be submitted?

- Email (body of email and/or attachments)
- Typed summaries from community meetings

What will happen with public comments?

- Air District staff will compile comments and organize by themes
- Air District staff will review comments with CSC
- Air District staff will publish all comments and make them available to decision makers

Steering Committee Questions and Discussions

Alfredo Angulo, CSC Co-Chair



Public Comment

Alfredo Angulo, CSC Co-Chair



Standing Environmental Justice Updates

Alfredo Angulo, CSC Co-Chair

RICHMOND - NORTH
RICHMOND - SAN PABLO
COMMUNITY **PATH TO**
CLEAN AIR

Next Meeting Details

- Our next Steering Committee meeting will be Monday, December 4th, from 5:30PM to 8:00PM.

Public Comment on Non-Agenda Matters

Alfredo Angulo, CSC Co-Chair

