



GROUNDWORK

Richmond

Richmond Air Rangers

Monitoring, Modeling
& Job Training

California Air Resources Board

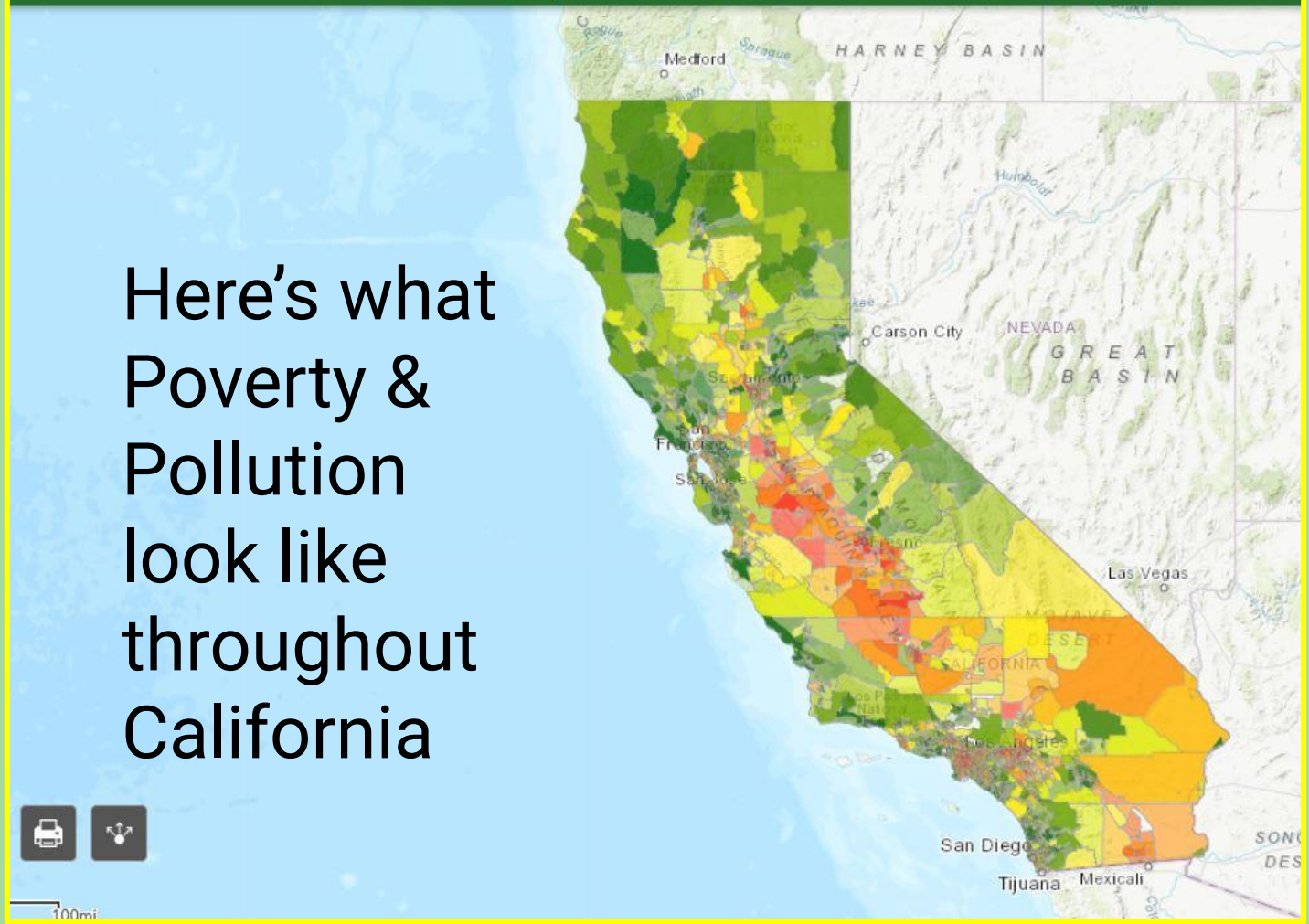
Community Air Grant Program



Shair

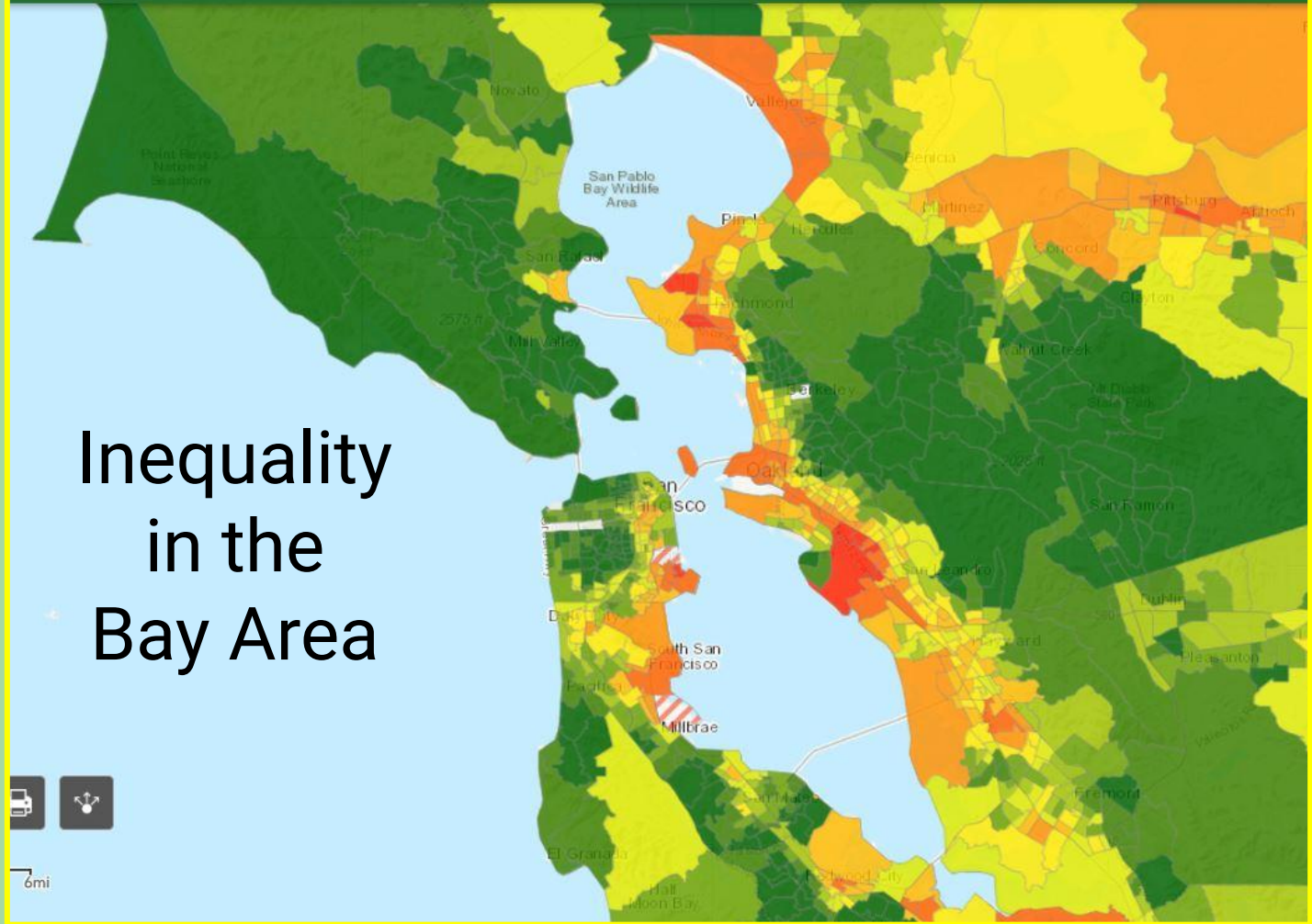


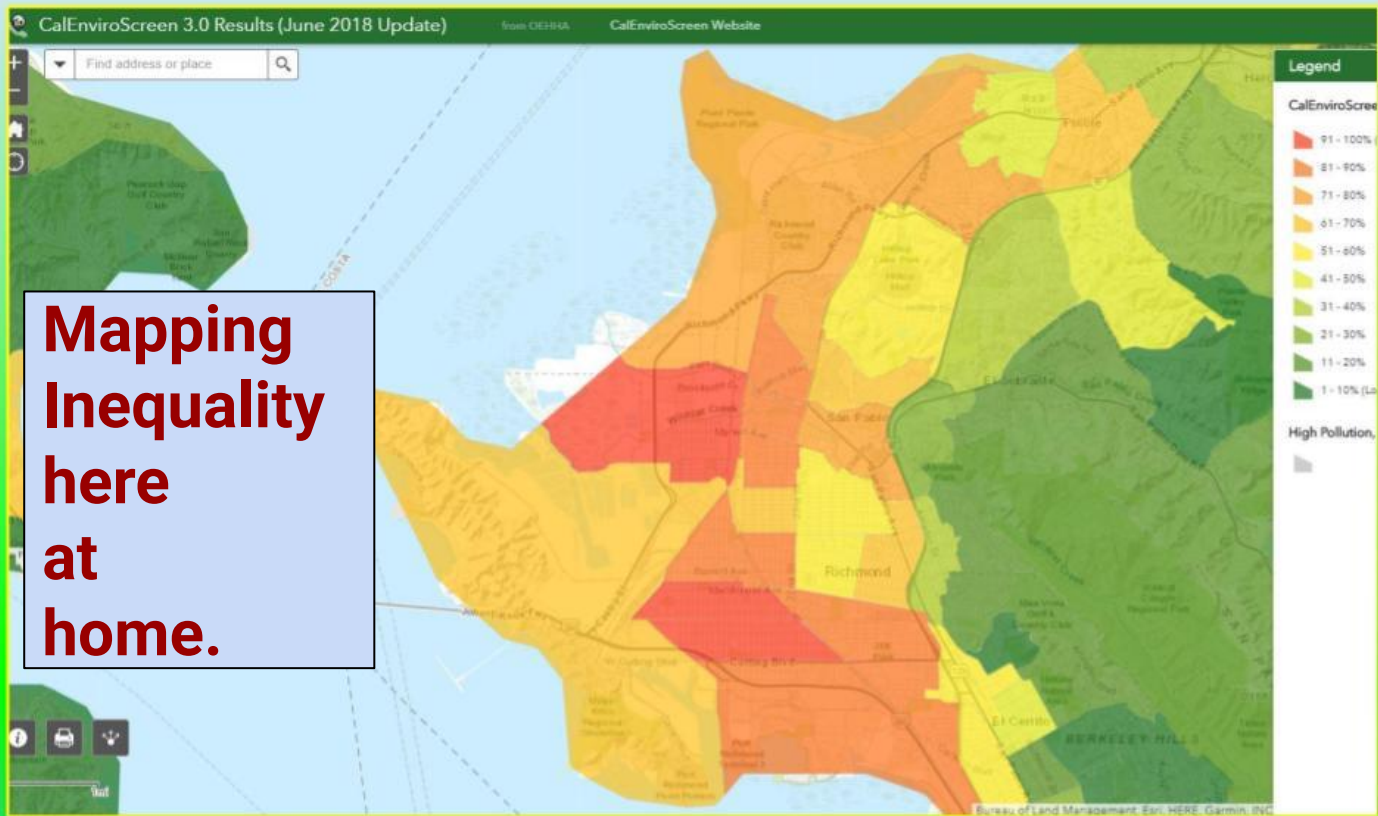
Here's what Poverty & Pollution look like throughout California





Inequality in the Bay Area

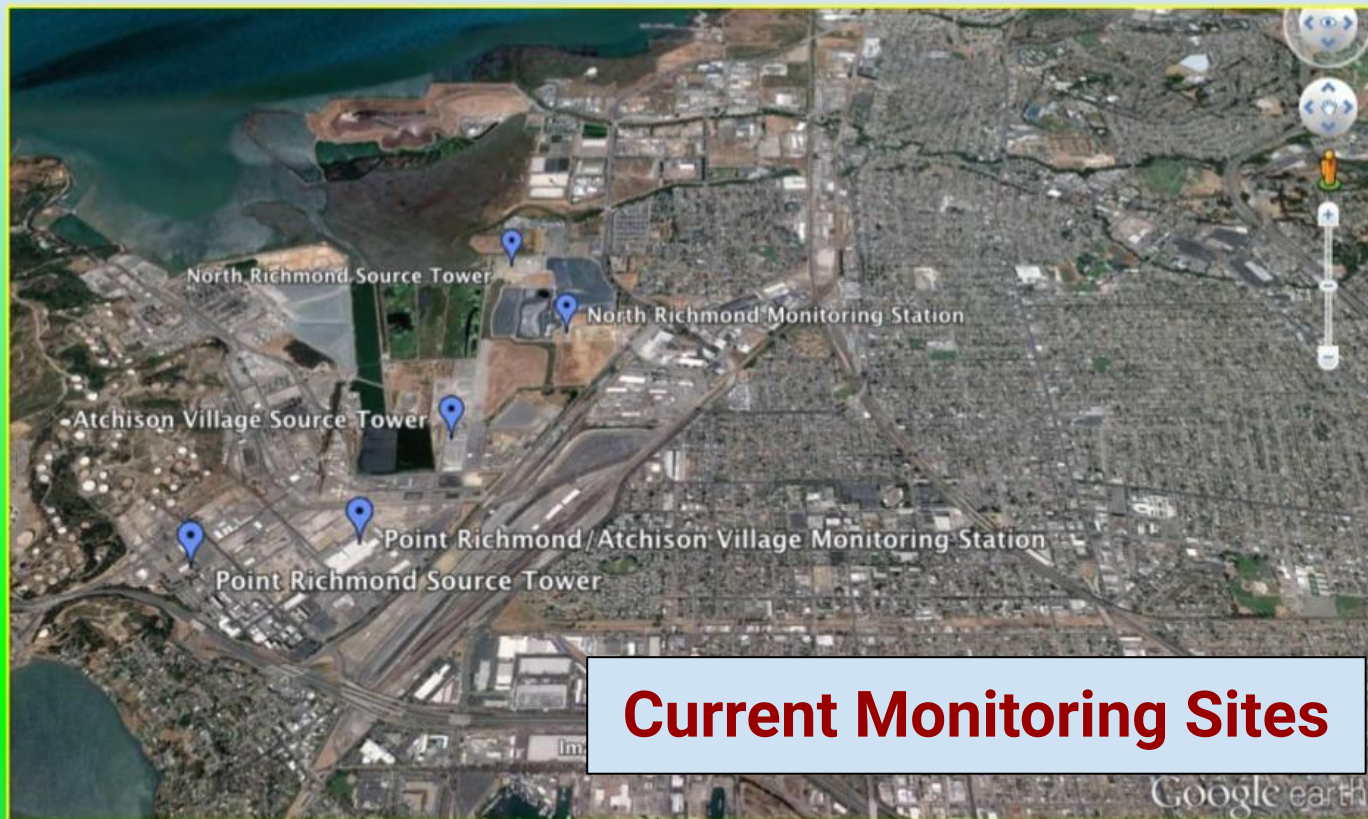




Groundwork
Richmond



*Changing Places.
Changing Lives.*



Current Monitoring Sites



Groundwork
Richmond

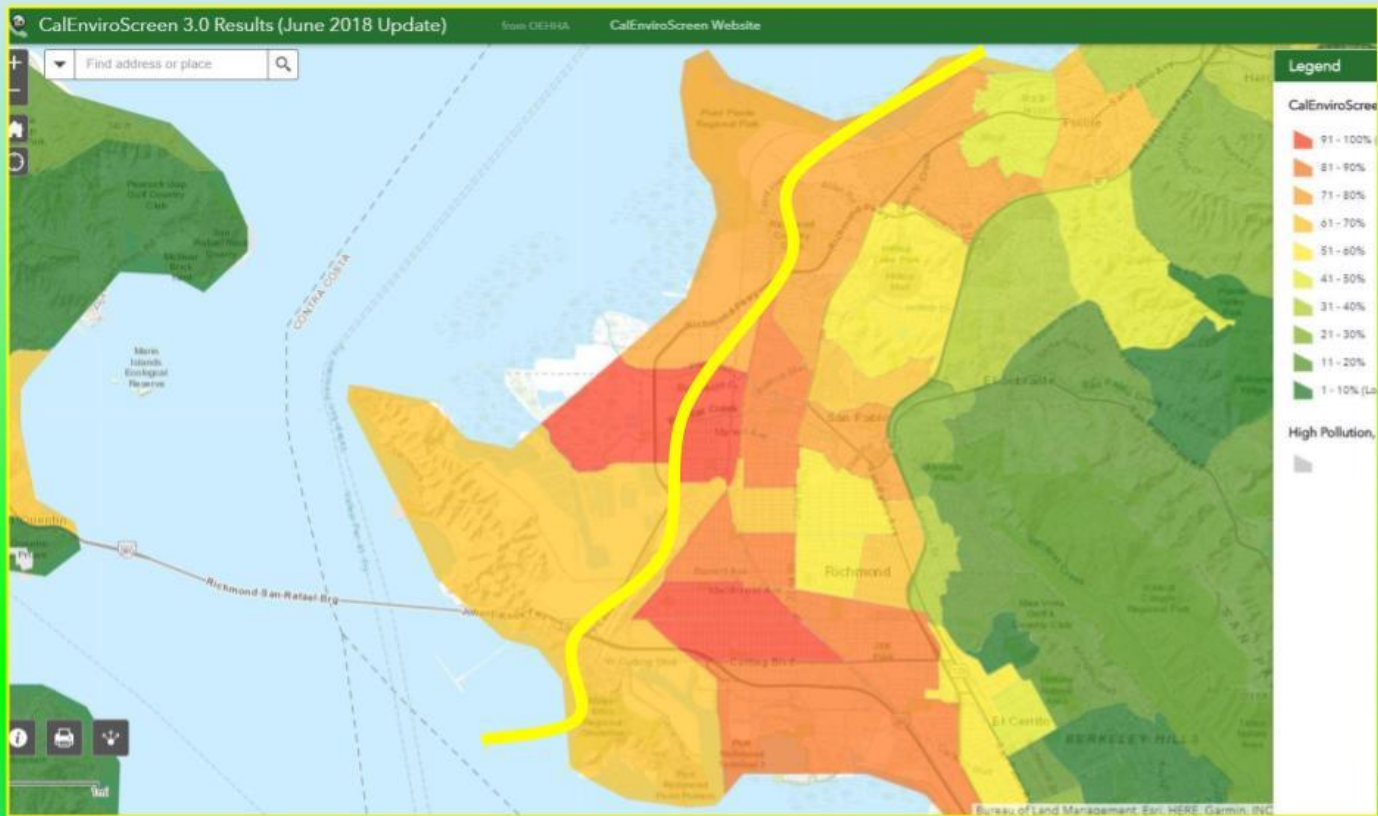


*Changing Places.
Changing Lives.*

Mobile Source Pollution

Routine Pollution that remains un-monitored throughout much of California

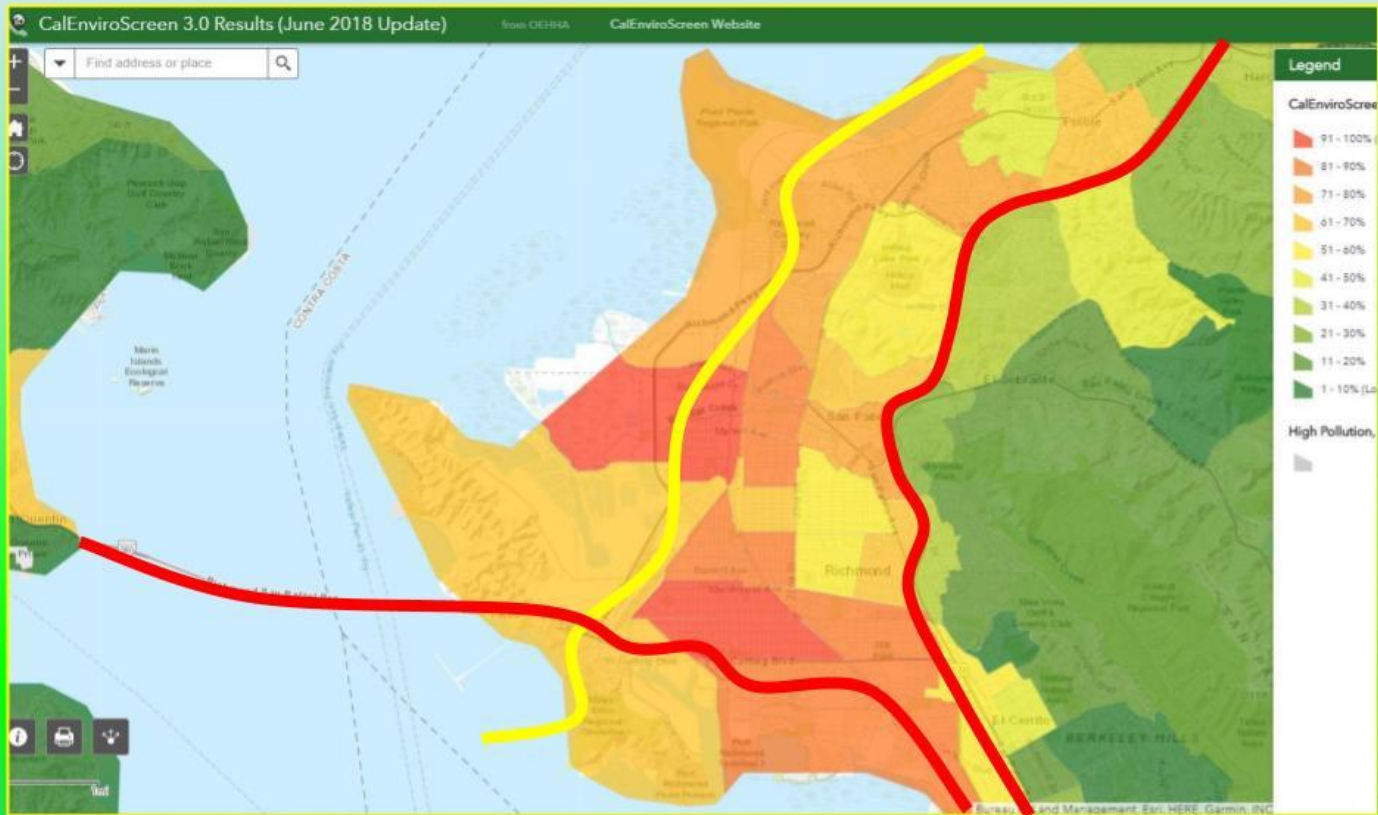




Groundwork
Richmond



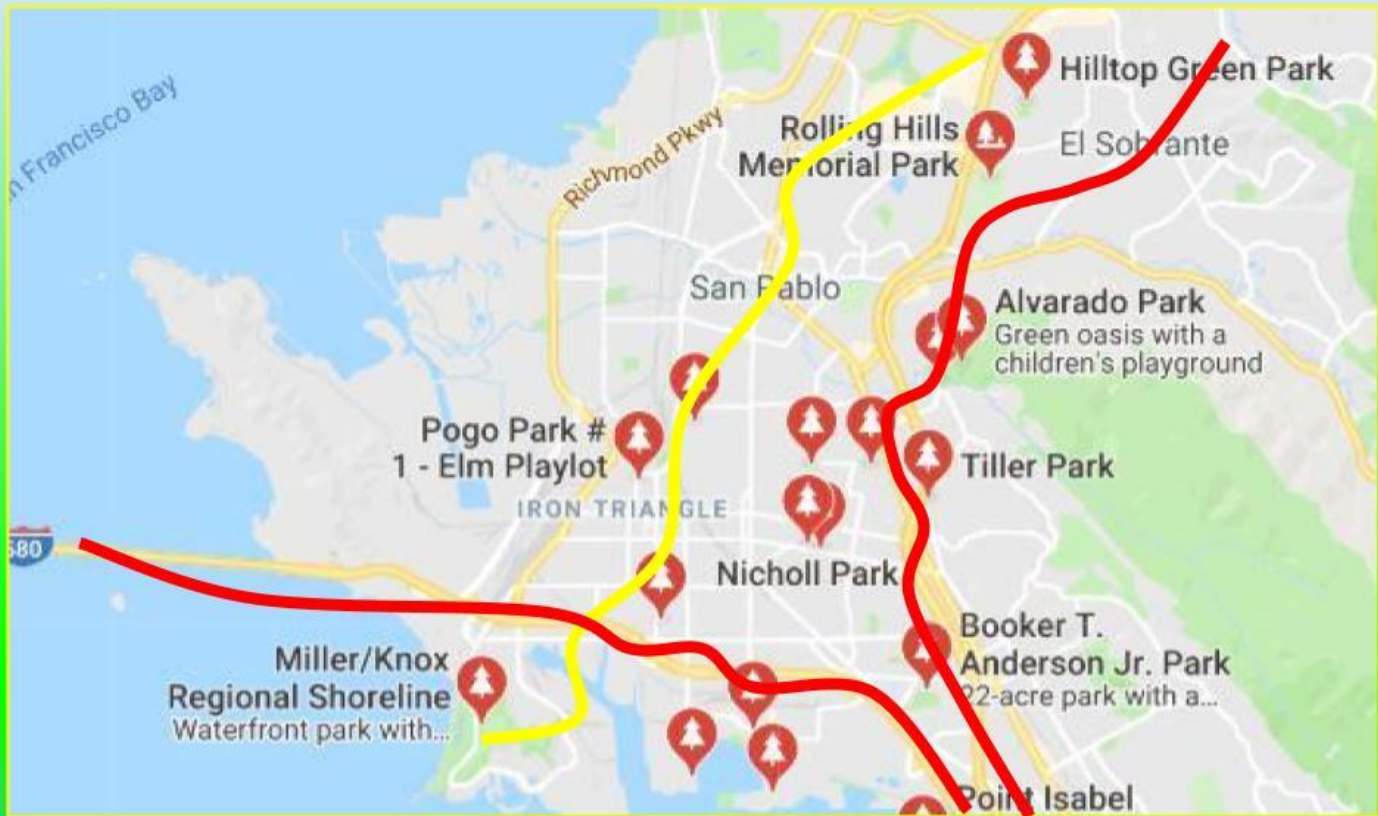
Changing Places.
Changing Lives.



Groundwork
Richmond



*Changing Places.
Changing Lives.*



Groundwork
Richmond



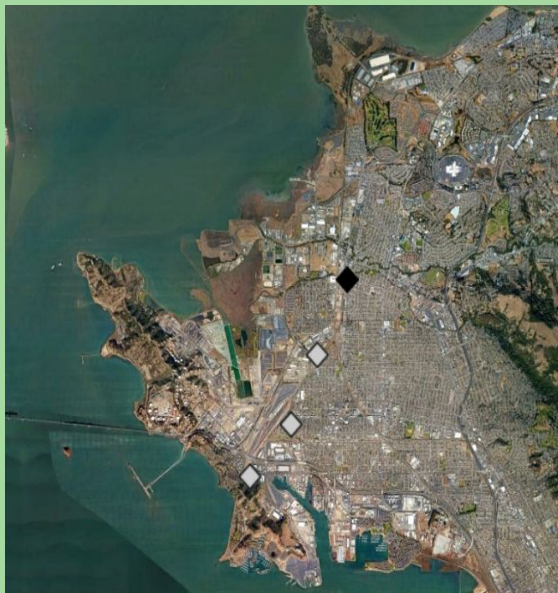
*Changing Places.
Changing Lives.*

Stationary Sources the represent a unique challenge within our study area.

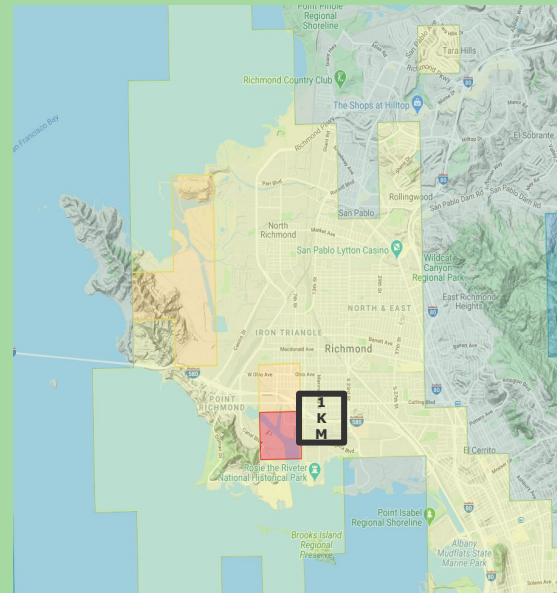


EXISTING AIR QUALITY TOOLS

AIR QUALITY MONITORING STATIONS FOR RICHMOND
GOOGLE EARTH, 2019, [BAAQMD PM2.5 AIR MONITORING MAPVIEW](#)



AIR QUALITY MONITORING STATIONS FOR RICHMOND
GOOGLE EARTH, 2019, [BAAQMD PM2.5 AIR MONITORING MAPVIEW](#)



REGIONAL MODEL WITH A 1 KM RESOLUTION
RICHMOND STEERING COMMITTEE, 2019, [PM2.5 FILTER MAPVIEW](#)





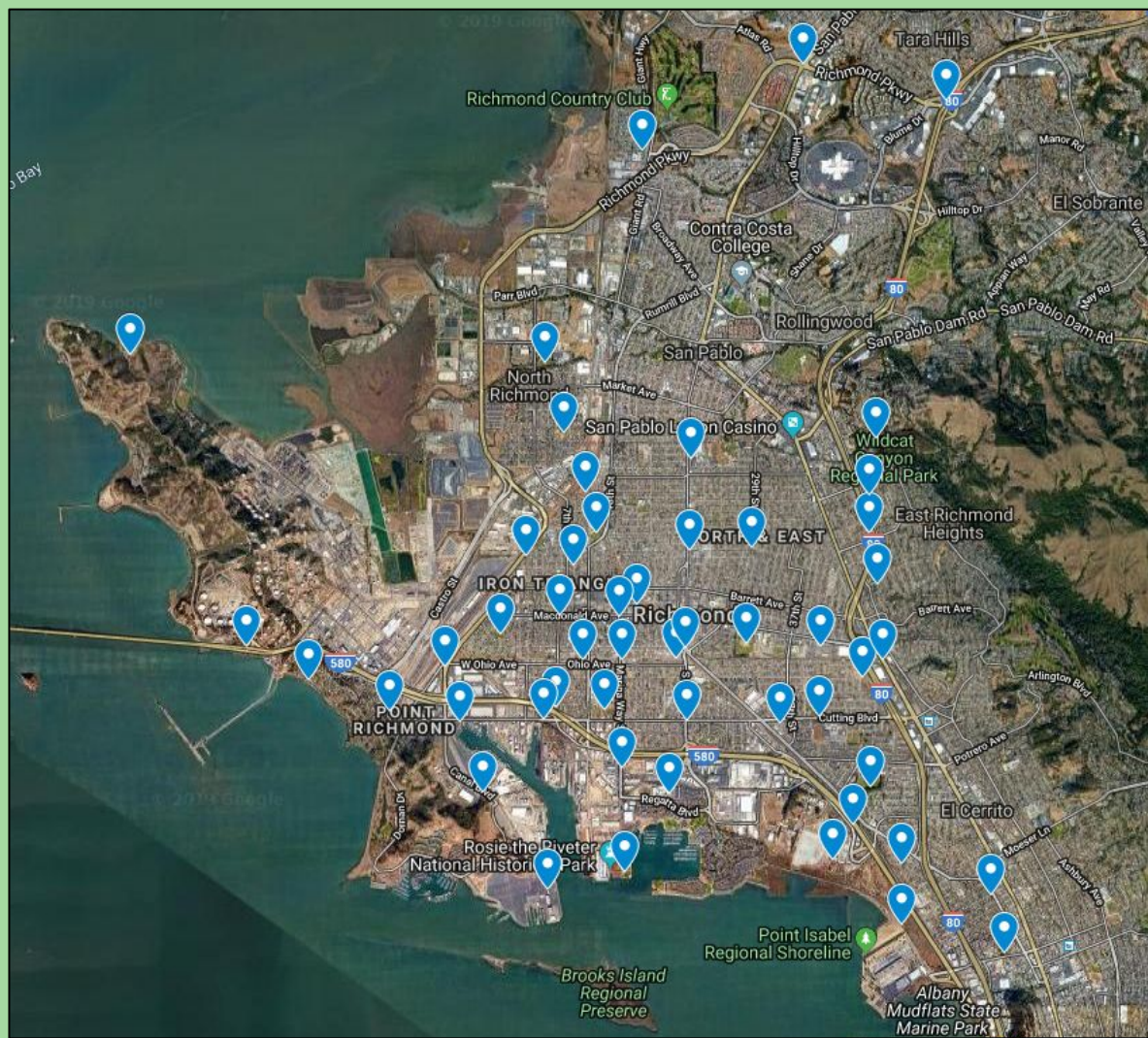
New Technology
Means New
Possibilities.

Our network was
designed by the
community to look
at the places that
matter to them.

Residents placed
the network where
they live, work &
play instead.

Monitoring the
people who are
impacted most.

We can go beyond
litigation and
property ownership.



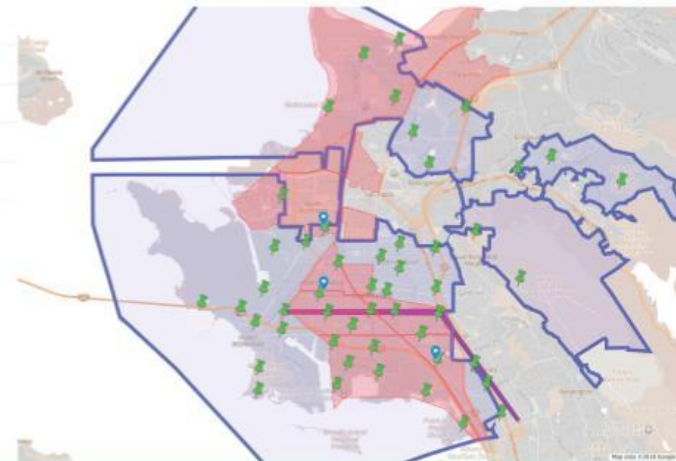


Built
For
Us,
By
Us.



Richmond Network

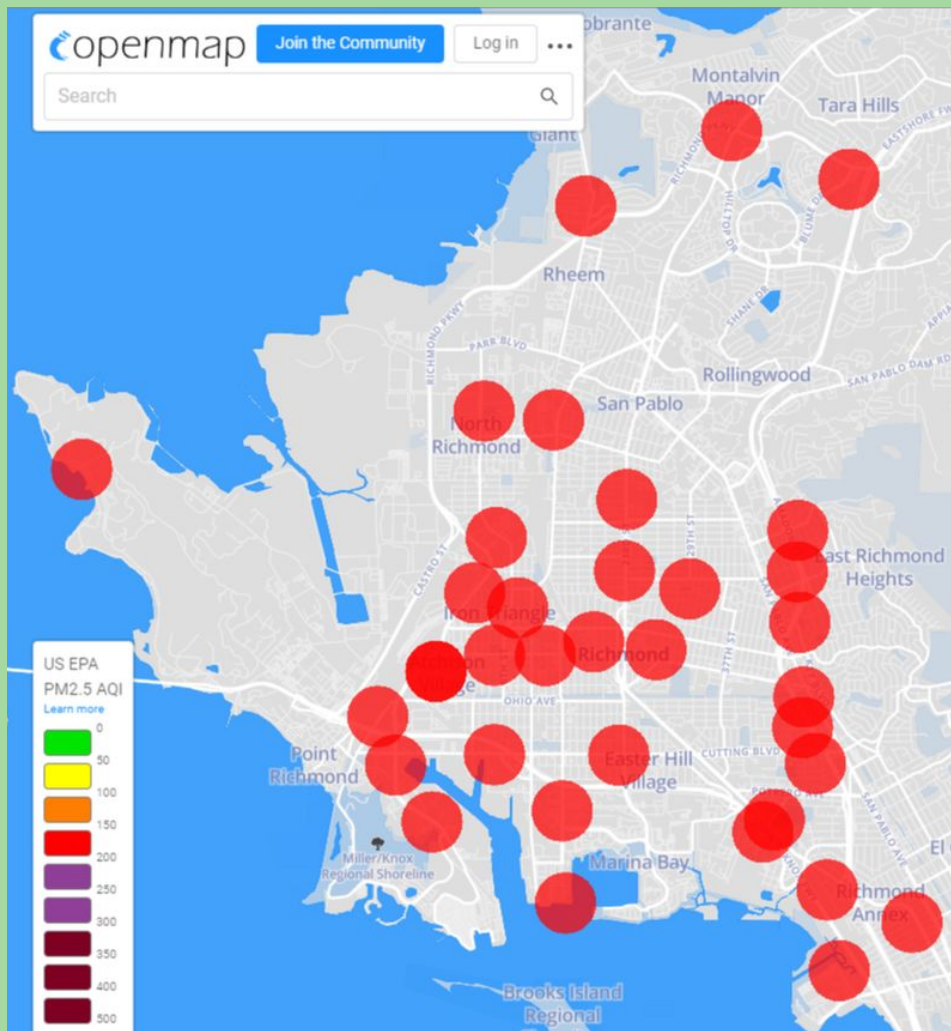
- Community Centers
- Richmond Cleanway
- Halls in Richmond
- Richmond City Recreary
- Disenfranchised Communities



Groundwork
Richmond



Changing Places.
Changing Lives.

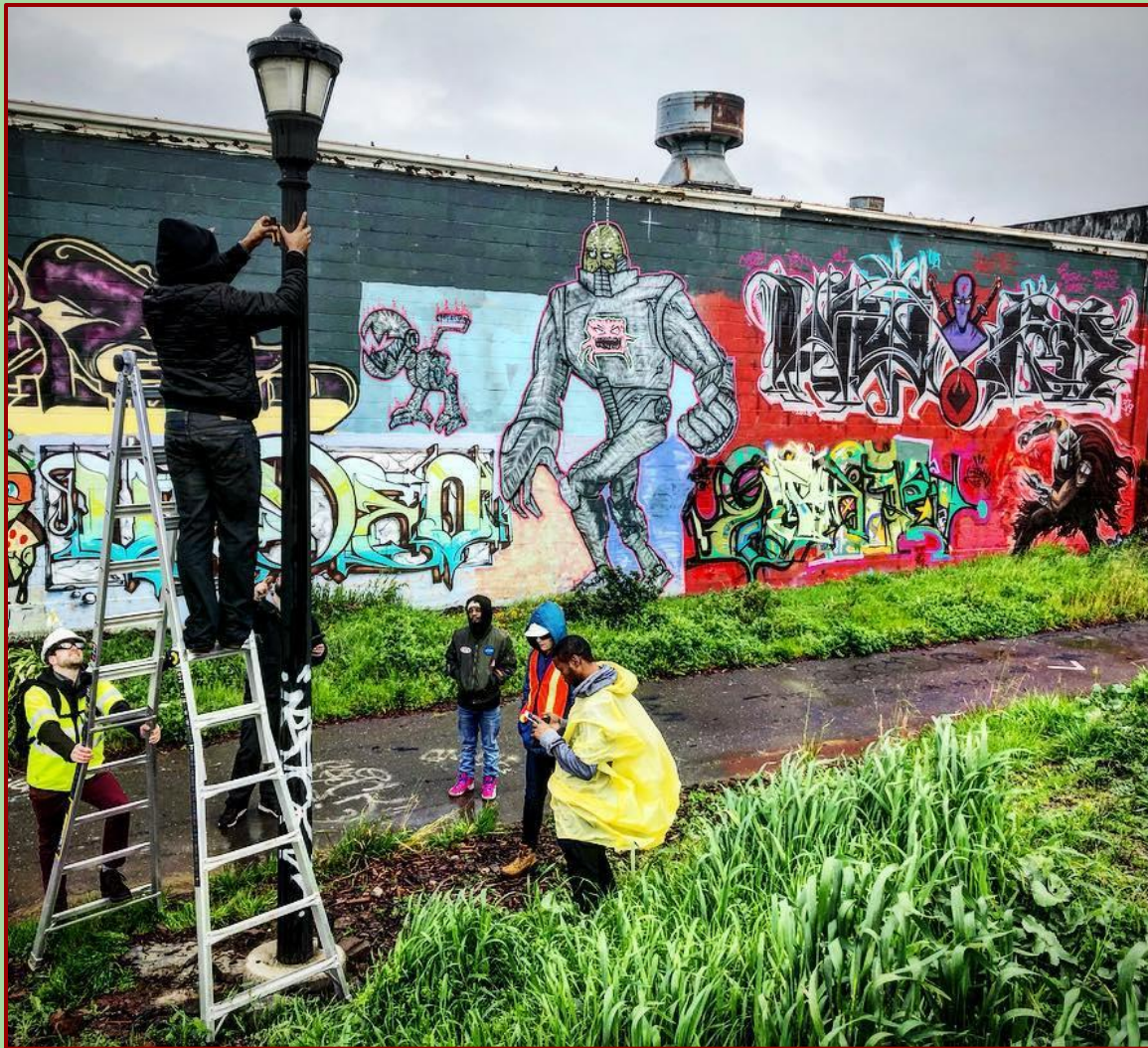


The Clarity Open Map has been hugely useful for identifying bad air days like this one During last Fall's wildfire episode.

This was the day the school district closed and sent our kids outside to walk home in the smoke.



Air Rangers Installing Sensors, Learning Technical Skills and following the Scientific Method.



TRANSPARENT RICHMOND

Richmond

Home Page Browse Developers Support | Q | sign in

Transparent Richmond

Welcome to Transparent Richmond! The City of Richmond, California's open data and performance reporting system aims to increase efficiency of City programs and services and allow the community to explore Richmond's data and strategic goals.

Search for Data

- Governance and Leadership**
Human Capital and Open Data Program
- Open Finance, Budget, & Expenditures**
Financial transparency data
- Economic Development & Education**
Library and Community Services
- Infrastructure Improvement Projects**
Capital Projects Explorer
- Residential & Built Environment**
Planning, Building, Housing, Bikeways, and Street Improvements
- Sustainability & Health Equity**
Climate Action Goals and Initiatives
- Full Service & Safe Communities**
Code Enforcement, Illegal Dumping, Richmond Police Department
- Community Profile**
Demographics of Richmond Residents

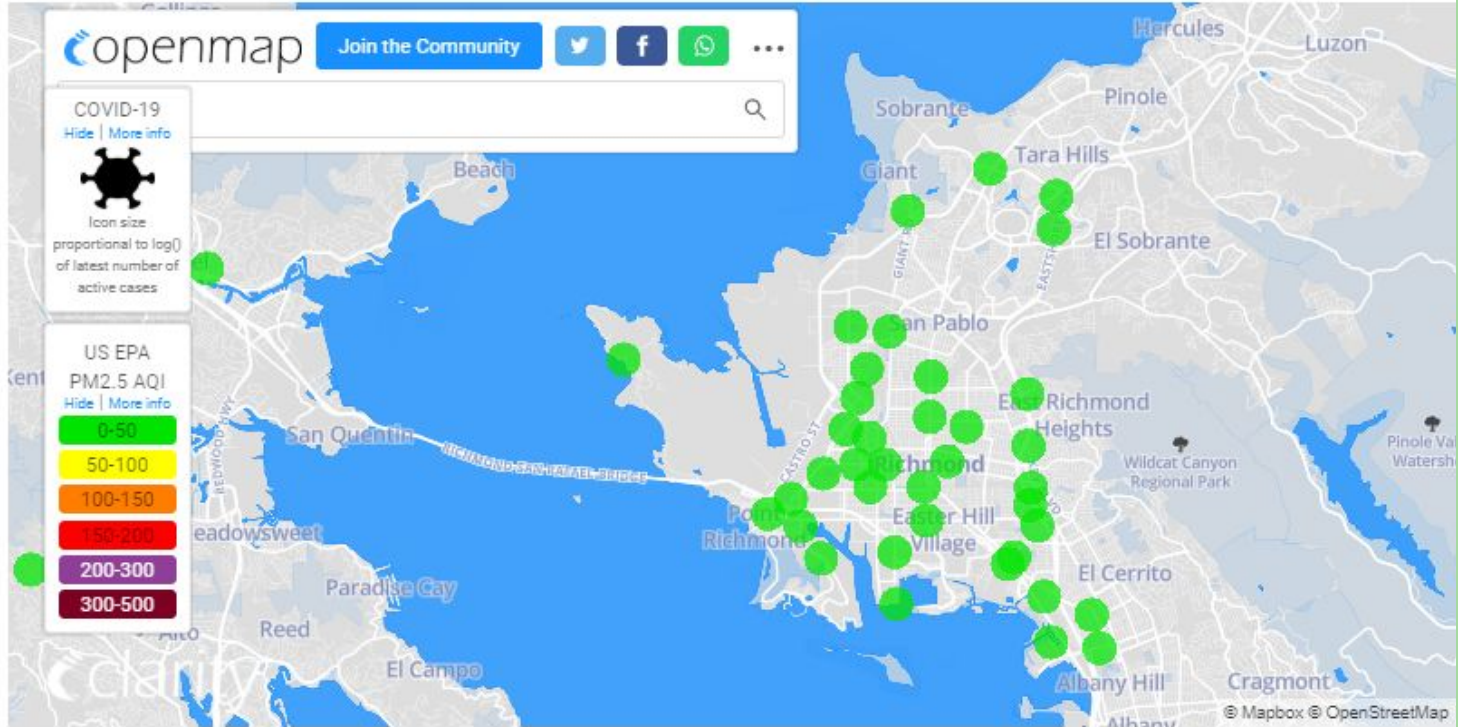
- Community Air Monitoring**
View Real Time Information >
- Major Developments**
See major developments in Richmond >
- Data Requests**
Suggest data to add to Transparent Richmond >
- API's with Richmond's Data**
Access Richmond's Data through APIs >



City of Richmond, 2020,

<https://www.transparentrichmond.org/>

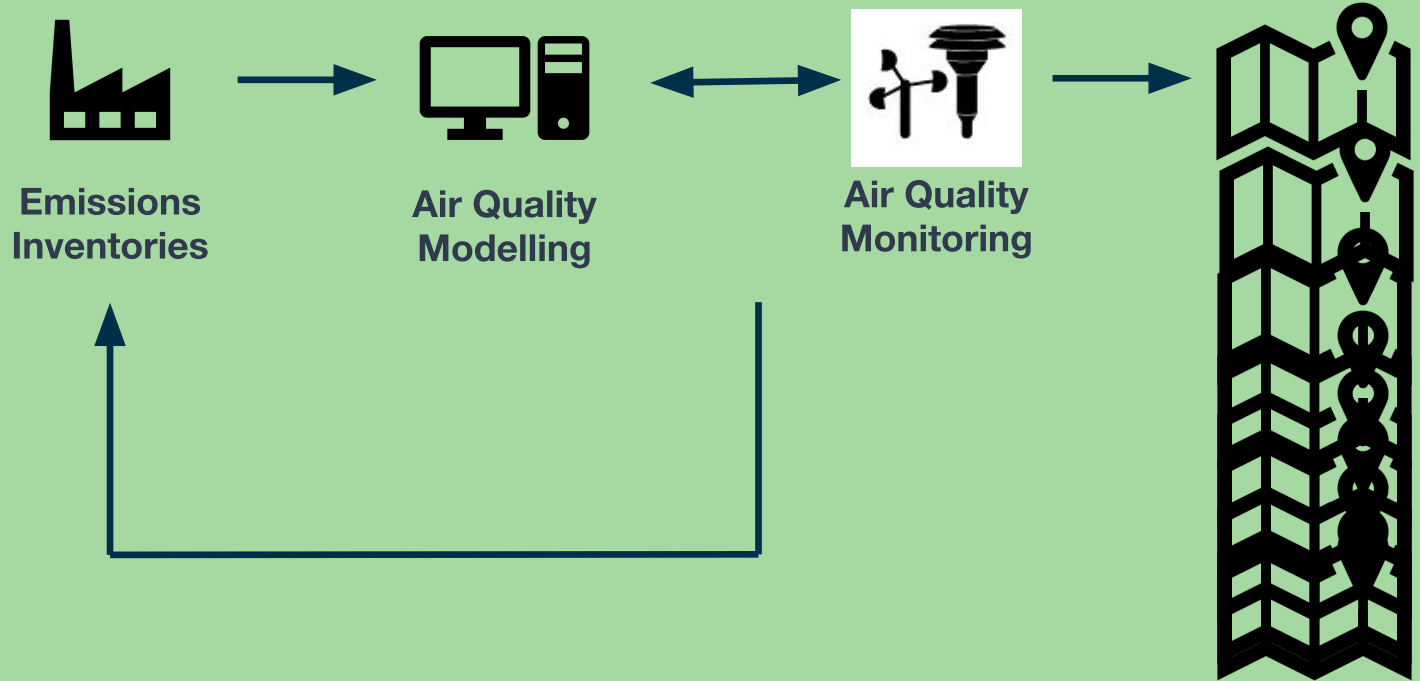
Richmond-San Pablo Community Air Monitoring

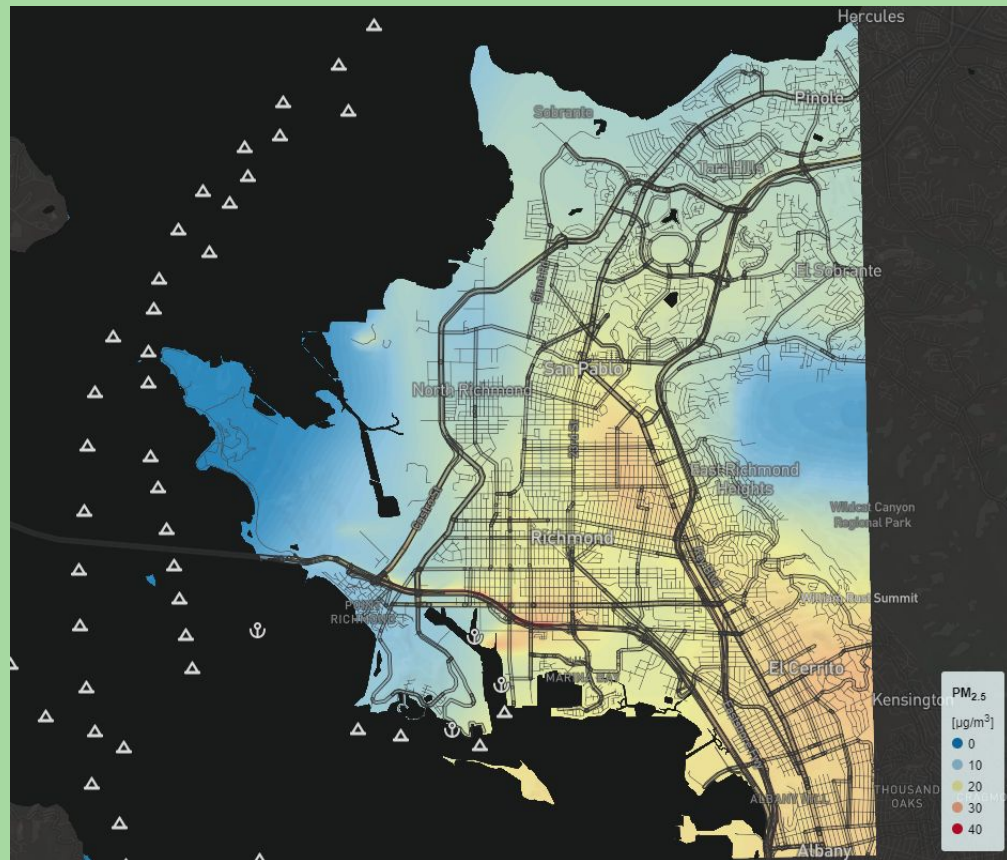
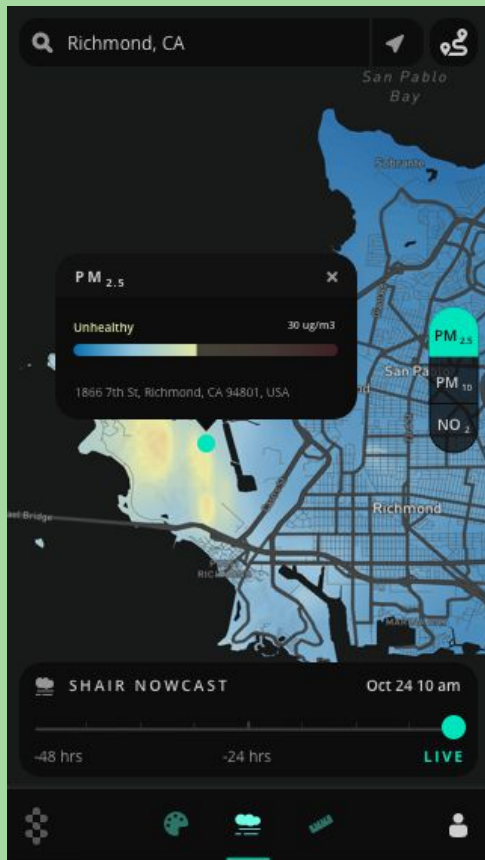


Discrete PM 2.5 Data Currently Available on Transparent Richmond



Discrete points are challenging to understand Shair gives a full picture

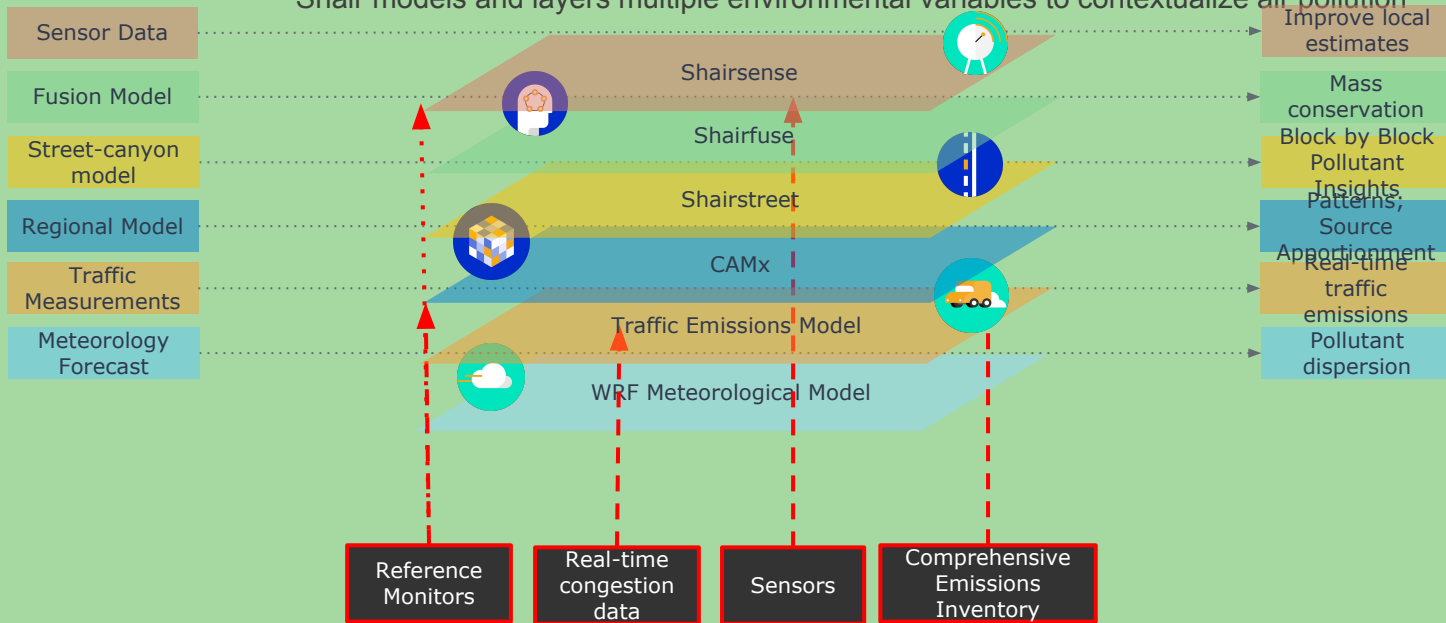




SHAIR INTERFACE slated to replace *Clarity Map* on Transparent Richmond (app.ramboll-shair.com)



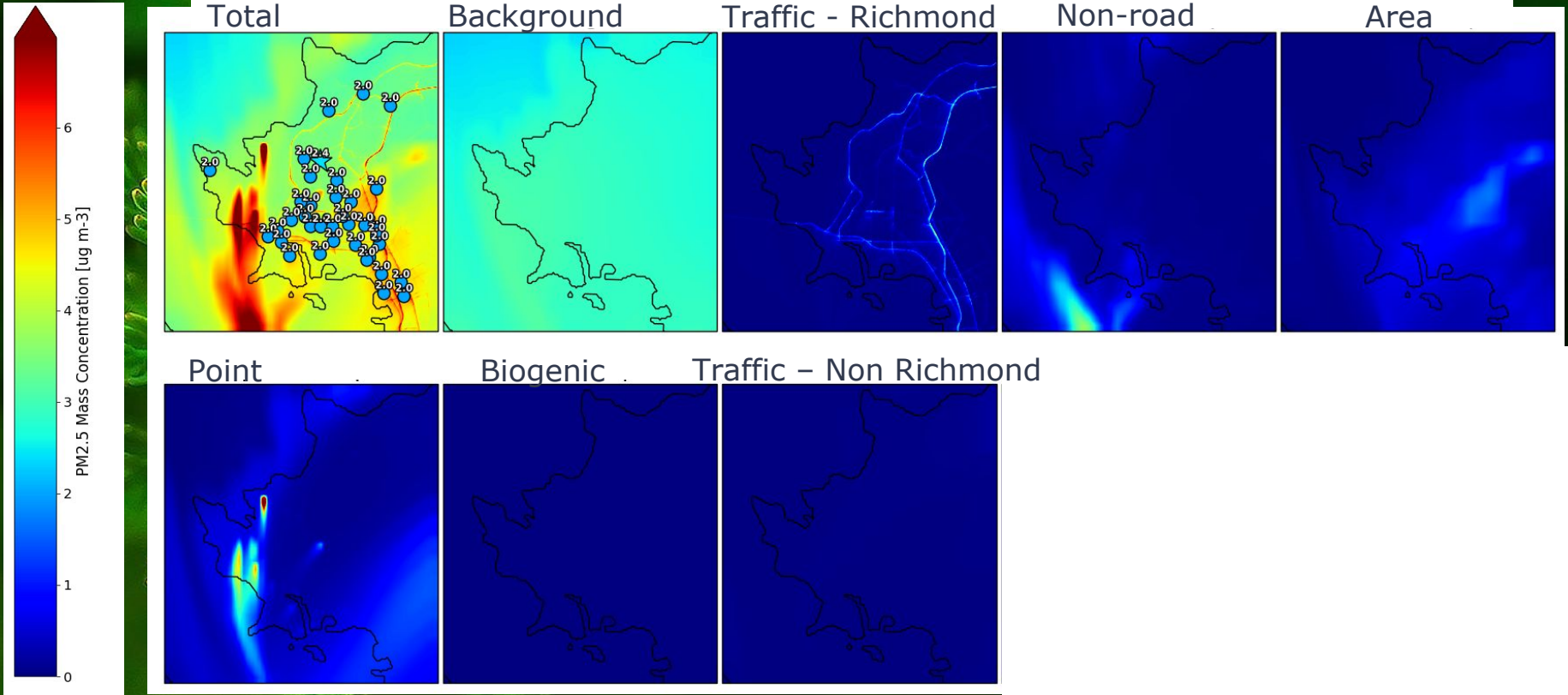
Shair models and layers multiple environmental variables to contextualize air pollution

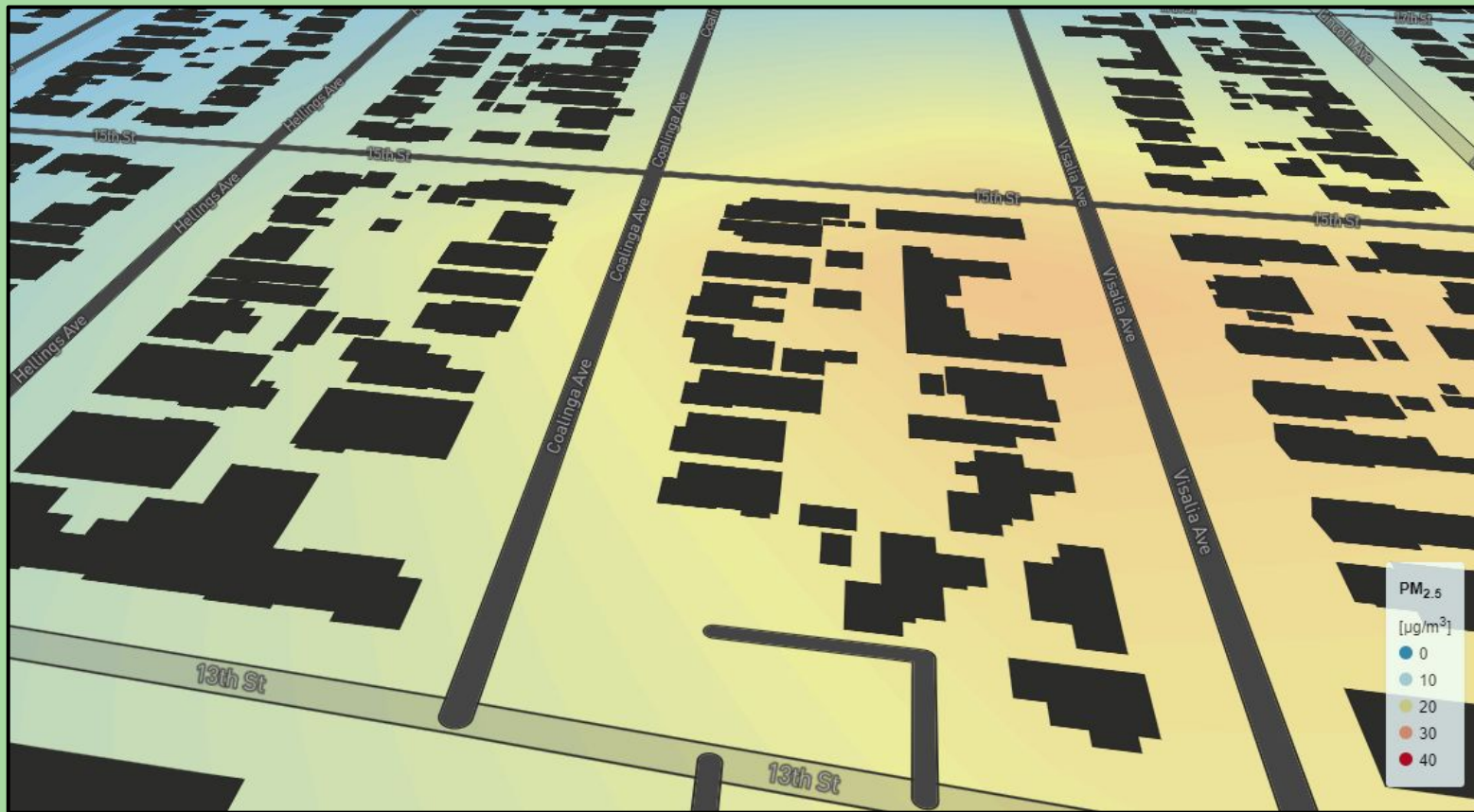


Coming Soon -
BAAQMD San Pablo
Monitoring RoofTOP

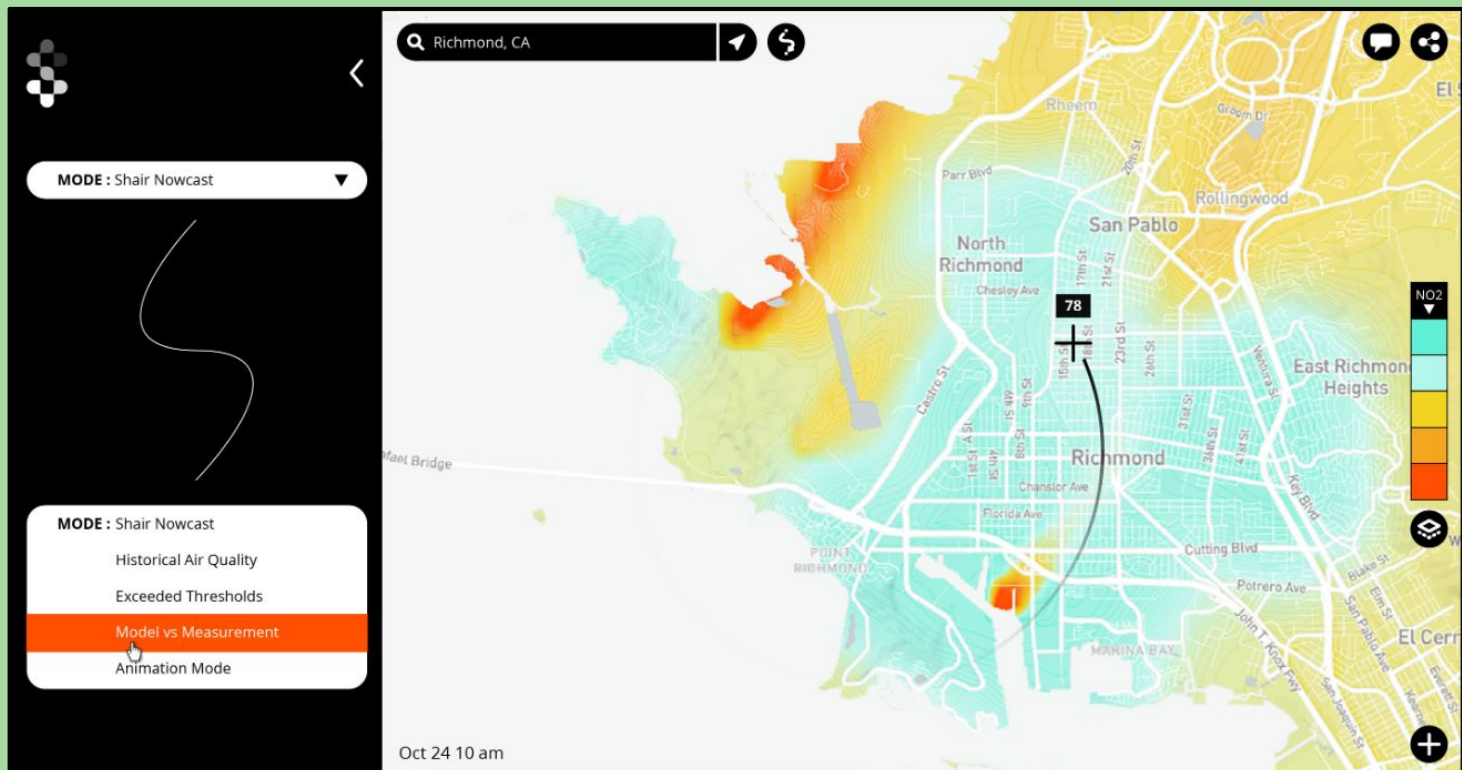
HOW SHAIR WORKS

SHAIR SOURCE CONTRIBUTIONS





More granular spatial and temporal data than ever before



The center of strategic planning

- ~ Real-time, accessible information
- ~ Locate and identify hotspots
- ~ Track trends and effectiveness of strategies over time
- ~ Share information and notify when levels reach a particular threshold

PHASE II

~Workforce Development transitions from sensor installation to filter sample collection~

~SHAIR Model directs sample collection identifying airborne compounds of concern~



The Air Rangers Van will
Collect Gravimetrically
Speciated Samples of
airborne metals



Lab verified results helping
us all to utilize hyper-local
data for decision-making





RICHMOND - SAN PABLO
COMMUNITY **PATH TO**
CLEAN AIR

