

# East Oakland Community Emission Reduction Plan (CERP) Community Steering Committee Meeting #9

June 8, 2023

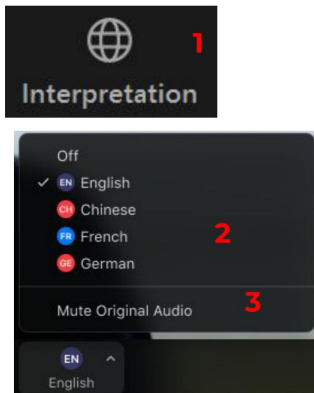


**BAY AREA AIR QUALITY  
MANAGEMENT DISTRICT**

COMMUNITIES  
FOR A BETTER  
ENVIRONMENT  
established 1978

# Interpretation Instructions

Windows | macOS



## ZOOM - Select Language Channel

### ENGLISH

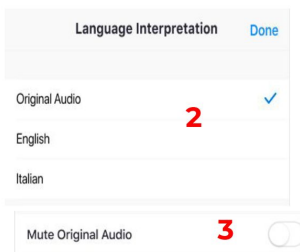


1. In your meeting/webinar controls, click Interpretation.
2. Select the language that you would like to hear: English.
3. Closed caption: please turn on if you need it.

### SPANISH

1. En los controles de la reunión o el seminario web, haga clic en Interpretación.
2. Haga clic en el idioma que desee escuchar: español (Spanish).
3. (Opcional) Para escuchar solo el idioma interpretado, haga clic en Silenciar audio original

Android | iOS



# Welcome

Lujain Al-Saleh and Esther Goolsby, CBE  
Co-Chairs Aiyahna Johnson and Charles Reed

# Agenda

- **Welcome, Interpretation, Agenda** (10 mins; 6:00-6:09 PM)
- **Youth Co-Chair Position – Mykela Patton** (15 mins; 6:10-6:24PM)
- **Community Vision and Principles** (15 mins; 6:25-6:39 PM)
- **Overview of Strategy Roadmap** (12.5 mins; 6:40-6:52 PM)
- **Oakland General Plan Update and Environmental Justice Element** (12.5 mins; 6:52- 7:04 PM)
- **Break** (5 mins; 7:05-7:09 PM)
- **CERP Boundary Update** (35 mins; 7:10-7:44 PM)
- **East Oakland Environmental Justice (EJ) Announcements and Updates** (15 mins; 7:45-7:59 PM)
- **Next Steps and Close out** (1 min; 8:00 PM)

## Initial Meeting Agreements or Notes for Participation

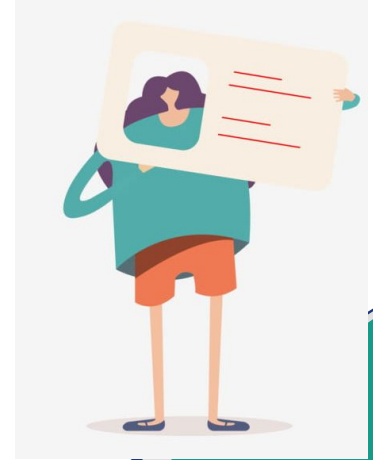
- One mic, one voice: use Raised Hand function under Reactions at the bottom of your screen
- Grace for ourselves and one another.
- Take care of yourself (Stretch, drink water and breathe)
- Community building on Zoom: use Chat and the Reaction emojis to inspire and encourage one another
- For any questions throughout the meeting: please use the Zoom Chat. CBE and BAAQMD staff will be responding to your questions.

# COMMUNITY BUILDING

Type into Chat:

- Name, Pronouns, affiliated organizations

CSC members, please raise hand if you are not able to type into chat and we will have you speak aloud.



# Updates

- 
- Extension Letter was sent to CARB!
  - Please inform us if you will be absent for future meetings
  - Reminder to submit your Form 700
  - CSC Member resignation submitted on May 30th
  - Please let us know what health information you would like to hear from Alameda County Public Health for a future presentation

# Timeline





# Youth Co-Chair Position – Mykela Patton Statement and Vote

Aiyahnna, Charles, and Lujain

# APPROVED by the CSC: Roles & Responsibilities of Steering Committee Co-Chairs

- Provide CSC leadership and guidance along with CBE staff
  - 1-2 orientation meetings with Air District & CBE staff & Just Cities
- Help plan CSC agendas, facilitate breakout sessions and discussions
  - Meet multiple times per month with Air District & CBE staff to prepare for CSC meetings (including agendas) (about 5 hours of meetings per month *in addition* to monthly CSC meetings)
- Provide direction for Air District & CBE to develop Community Emissions Reduction Plan
- If you miss 2 consecutive Co-Chair meetings, another Co-Chair will be selected.



Additional stipend of \$75 per/hr for each Co-chair to compensate for participation in meetings

---

# Mykela Patton Statement

---

# Roll Call Vote



# CERP Community Vision and Principles

Aiyahnna and Charles

# Draft Vision Statement

We seek to create a future East Oakland that includes **health, accountability, transparency, and justice**. Our vision includes healthy and clean air, streets, schools, industries, and parks. In this vision, industry and other polluters are held **accountable for their actions**, and are **committed to reducing the harm they have caused** to impacted and neglected East Oakland neighborhoods. Government agencies are **accountable to us and transparent in their actions** by enforcing health-protective laws and **collaborating** with us to remove existing pollution and future pollution sources from our neighborhoods. We prioritize **justice and equity** in our community by working to end structural racism, such as redlining, and to create a more equitable society where everyone benefits from progress and environmental justice. Ultimately, we envision a future where **transparency, trust, and mutual responsibility** is realized, and where every resident can live, work, and play in a healthy and sustainable East Oakland.

# Draft Principles Statement

The East Oakland Community Steering Committee is committed to these Principles as a foundation for our work together and building an East Oakland Community Emissions Reduction Plan (CERP) that expresses:

- 1. Justice and Equity:** We believe in the [Principles of Environmental Justice](#), our right to raise our children in a healthy environment, and support those who have been harmed by pollution in East Oakland. We seek equitable investment in communities and respect for East Oakland neighborhood identity and culture. We recognize what we do now affects future generations.
- 2. Collaboration and Communication:** We are stronger when we work together. Our partners include all members of the East Oakland community, government agencies, and industry. The CERP is a community-driven decision making process. We are working together to define equity and build a cleaner and healthier future for all.

# Draft Principles Statement Continued

- 3. Information Sharing and Transparency:** We are committed to building trust and understanding through education, transparency, and information sharing. We value the different experiences and perspectives of our fellow community members. To build our CERP, we strive to have clear communication about timelines, resources, and logistics that are effectively communicated and relayed back to community members.
- 4. Accountability and Solutions:** We believe in holding individuals, government, and industries accountable for their actions. By promoting transparency and mutual responsibility, we can move towards our shared goals and a CERP that addresses community concerns and identifies strategies that reduce pollution in East Oakland.



# Reminder of the Development Process

1. Small group activity at CSC Meeting #7 documented in a [Jamboard](#)
2. Co-chairs and Co-lead small group met to develop draft Vision and Principles
  - a. Identified most common themes from the Jamboard exercise
  - b. Wrote and edited a draft Vision & Principles for CSC review and comment
3. Draft Vision Statement and Principles presented at CSC #8
4. Deadline for CSC members to provide comments and suggested edits was Sunday, May 21.

**Questions?**

A decorative graphic in the bottom right corner of the slide. It consists of a dark blue diagonal line starting from the bottom left and extending towards the top right. Below this line is a thin, light grey diagonal line. The area below the grey line is filled with a solid teal color, forming a triangular shape that points towards the top right.

# ROLL CALL VOTE

Do you approve of the CERP Vision Statement and Principles?

- a. Yes
- b. No

# Overview of Strategy Development

Lujain Al-Saleh, CBE

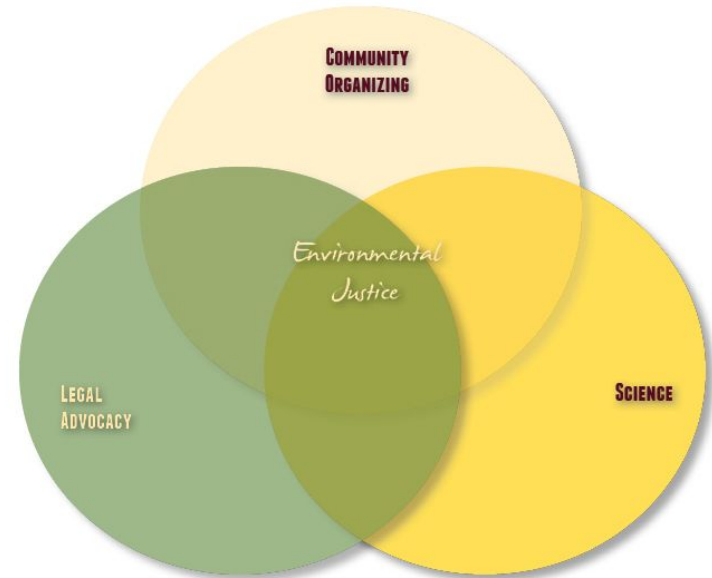
# Outline

1. How Did We Get Here?
2. Strategy Focused Approach
3. Strategy Road Map
4. Questions & Comments
5. Next Steps



# How Did We Get Here?

- Since the early 2000s, community-based campaigns at CBE have driven community-based mapping projects and studies in East Oakland
- **2008 - 2010:**
  - Multiple studies were conducted to address:
    1. Cumulative impacts of pollution
    2. Environmental justice issues
    3. Structural gaps in municipal and regulatory agencies



# Pre-AB 617/CERP Planning Phase

- **Summer 2021**
  - CBE and the Air District held initial conversations about forming a partnership and launching a CERP process in East Oakland, including:
    - **Pre-CERP Phase work**
      - Air quality concerns
      - Sources of pollution
      - Identify existing data and gaps
    - **Design of the Community Steering Committee**
      - Outreach and recruitment

# Pre-AB 617/CERP Planning Phase

- **Winter 2021 - Spring 2022**
  - Discussed the need for a “**strategy-first**” approach
    - This means that the Air District will dedicate resources to proactively **characterize** and **assess** high-priority emission sources as identified by CBE, local community partners, and community members





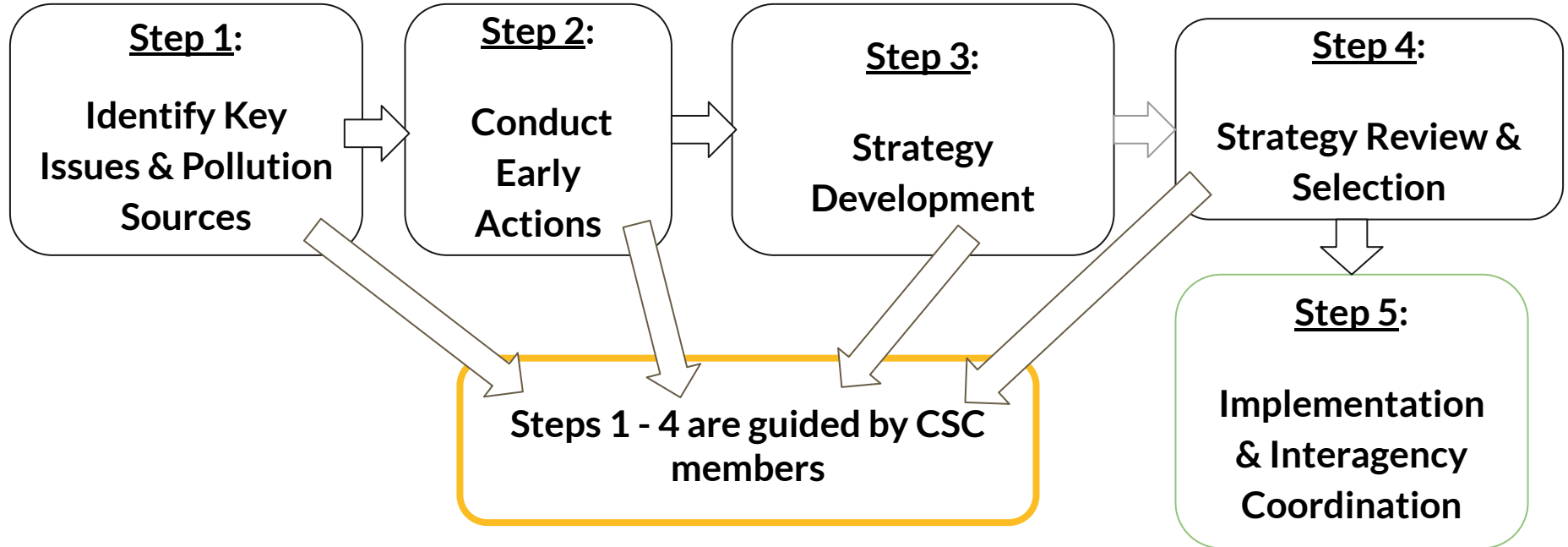
# Introduction to Strategy-Focused Approach

- **Organize & focus** on known sources of pollution in East Oakland
  - Sources & concerns identified by community members starting in 2008
- **Highlight** concerns raised by community voices & lived experiences
- **Advocate** for a set of actions & strategies to address each pollution concern & the associated impacts



CBE members demonstrate how to monitor air quality at AB&I during a Land Use and Built Environment Tour of East Oakland.

# Outline of Strategy Road Map



# What are Problem Statements & Early Actions?

- **Problem Statements**

- Identify a specific facility and/or pollution concern
- Directly informs Early Actions
- **Examples:** AB&I Foundry, Argent Materials, Crematorium (98th Ave), Gallagher & Burk, Sterling Environmental, Oakland International Airport Expansion, and R&A Trucking

- **Early Actions**

- Address a problem statement and high-priority emission sources
- Implement before the CERP is approved in June 2024
- Collaborate early with agencies, the CSC, CBOs & other local partners & stakeholders

# What are Strategies?

- **Strategies**

- Long-term actions developed through the CERP process
- Include clear goals & metrics for achieving & measuring emissions reduction
- Drafted by the CSC and potentially adapted from other existing AB 617 strategies, community planning documents (e.g. Oakland General Plan)
- Selection determined by the CSC & adopted in the CERP

# Questions?

What more do you want to hear about during Kim Ryan's (CBE AB 617 Researcher) presentation?

If you have additional questions or comments after this meeting, please email your questions to Lujain at [lujain@cbeval.org](mailto:lujain@cbeval.org)

# Next Steps

- Questions from today will be shared with Kim Ryan, CBE's AB 617 Researcher, who will provide responses in the coming weeks
- In the next CSC meeting on July 13th, Kim will present a more detailed presentation about strategy development and the Strategy Road Map

# Oakland General Plan Update and Environmental Justice Element

Khalilha Haynes, City of Oakland

# Oakland 2045 General Plan Update (GPU)

Environmental Justice  
and Safety Elements



OAKLAND 2045  
GENERAL PLAN

June 8, 2023  
East Oakland CERP Community  
Steering Committee



# EJ Element Overview



OAKLAND 2045  
GENERAL PLAN

Oakland 2045

## Oakland Environmental Justice Element

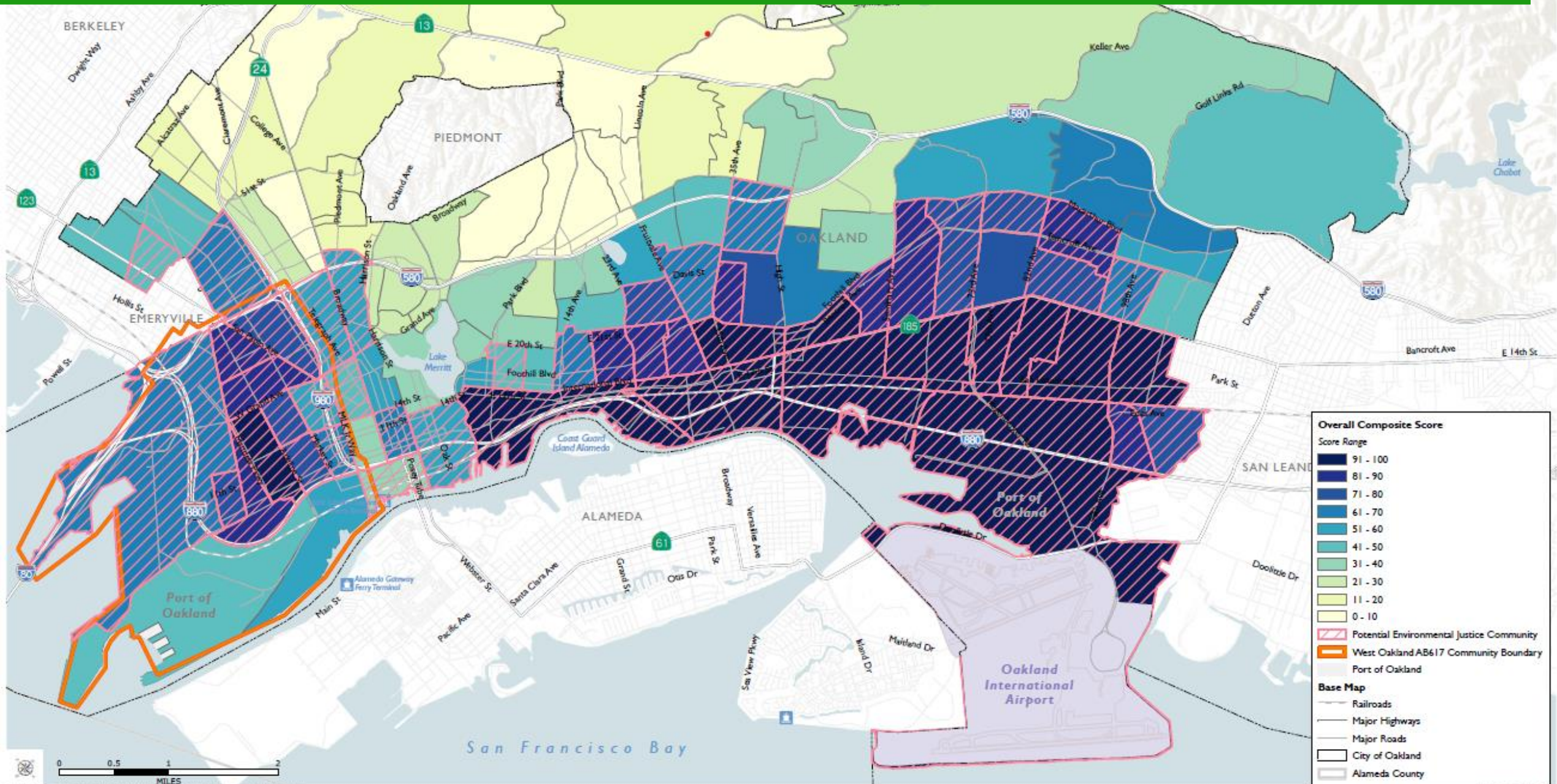
PUBLIC REVIEW DRAFT  
March 2023

**Goals, policies, and actions** that must:

1. Identify EJ communities
2. Reduce health risks in EJ communities;
3. Promote community engagement in the public decision-making process; &
4. Prioritize improvements and programs that meet the needs of EJ communities.



# Environmental Justice Communities Map





# EJ Element Goal 1

Reduce pollution, mitigate the impacts of pollution on existing sensitive land uses, and eliminate associated public health disparities.

**19**  
policies

**12**  
actions



# Policies and Actions – Land Use

## Policies

**EJ-1.1 Toxic Air Contaminants.** Reduce the public’s exposure to toxic air contaminants through appropriate land use and transportation strategies, particularly in Environmental Justice Communities and other areas most burdened by air pollution, as identified in Figure EJ-12.

**EJ-1.3 Industrial Uses Near Sensitive Land Uses.** Ensure that heavy industrial uses are adequately buffered from residential areas, schools, and other sensitive land uses. In new developments, require adequate mitigation of air contaminant exposure and vegetative barriers near large stationary and mobile sources of air pollution.

**EJ-1.4 Performance Standards.** Develop zoning standards applicable to new industrial and commercial developments in order to minimize or avoid the potential for adverse effects related to air quality, noise, or safety on adjacent existing residential uses and Environmental Justice Communities. This could include expansion of the S-19 Health and Safety Protection Combining Zone to include air quality effects.

**EJ-1.5 Regulate Polluting Uses.** Develop more stringent permitting standards and limit the number of variances approved for new, high-intensity, industrial or commercial land uses near sensitive uses in Environmental Justice Communities. See also Policy SAF-5.1.

**EJ-1.6 Enhanced Enforcement.** Prioritize code enforcement to address illegal land uses and activities that cause pollution and are hazardous to health in EJ Communities.

# Policies and Actions – Land Use

## Actions

**EJ-A.1** Amend the planning code to **reduce impact of industrial and truck-related businesses** on residential communities

**EJ-A.5 Study the feasibility of an amortization ordinance**, which allows the City to identify and prioritize nonconforming land uses (which could include existing polluting industries) to phase out over time. The study should recommend an implementation plan that includes criteria to determine which industries to amortize. Criteria could include total cost of land and improvements; cost of moving and reestablishing the use elsewhere in the city; whether the use is significantly non-conforming; compatibility with existing land use patterns and densities; and possible threat to public health, safety, or welfare.

**EJ-A.6 Prioritize and implement vegetative buffer projects**, including those between industrial land and sensitive land uses, as identified in specific plans and community plans, including EONI and WOCAP.

**EJ-A.7** As part of the LUTE update in Phase 2, **evaluate residential/industrial conflicts, especially in areas such as West and East Oakland**, and evaluate measures, including limiting additional residential development in high pollution areas and ensuring adequate buffering between industrial and residential land uses through land use designations.

# Discussion

# Upcoming Opportunities

- **Public Review Period:** March 24 – June 22, 2023
  - Download drafts to review: [EJ](#), [Safety](#) (or view in person at Central Library circulation desk)
  - Email feedback to [generalplan@oaklandca.gov](mailto:generalplan@oaklandca.gov).
  - Comment directly on the drafts via interactive Konveio pages ([EJ Konveio](#), [Safety Konveio](#))
  - Participate in community events posted on our [website](#).
- **Community Workshops / Pop-Ups on EJ and Safety Elements:**
  - June 3, East Oakland Futures Fest, 11am-6pm
  - June 6, virtual, 6pm-7:30pm
  - June 14, Central Library, 6pm-7:30pm
- Revised Elements: August-September 2023
- Hearings: Fall 2023

*More info on past and upcoming events:*  
<https://www.oaklandca.gov/topics/meetings-and-events>







**Thank You**



# CERP Boundary Update

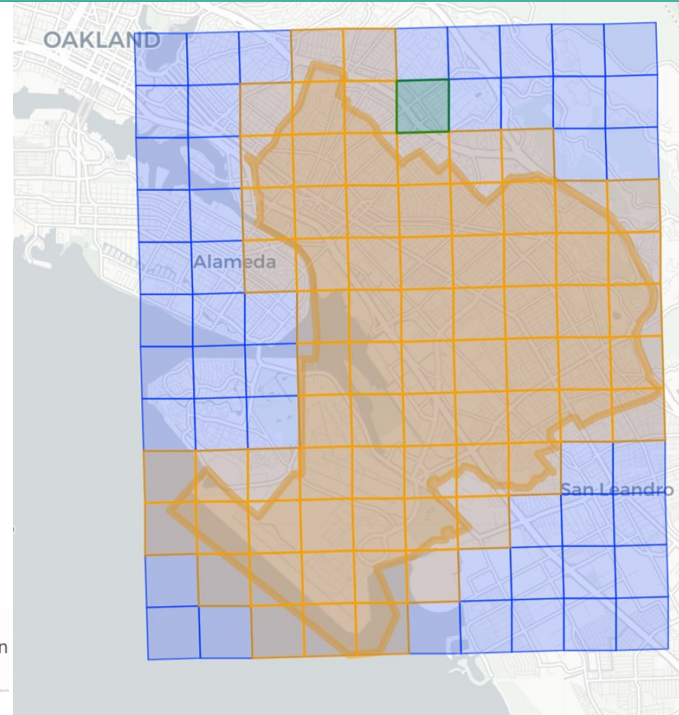
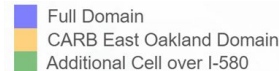
Alesia Hsiao & Steve Reid, BAAQMD

# CERP Boundary Recap

- CERP Community Boundary is the area where the community's lived experiences, perspectives, and land use information will be collected and described and where future Steering Committee members will be selected from. It is a requirement by CARB.
- CERP Emissions Inventory Boundary is the area where all sources are identified, technical information is developed, and where emissions reduction strategies will be developed, including actions at local, regional, and state levels.

# Emissions Inventory and Boundary

- Draft Emissions Inventory is the first step of the technical assessment.
- Air District staff can prepare a draft emissions inventory based on CERP Emissions Inventory Boundary and submit to Steering Committee for review.
- Additional sources that fall outside of the Emissions Inventory Boundary can also be evaluated later.





# Questions?

Are you ready for the draft emissions inventory to be prepared based on the CERP Emissions Inventory Boundary?

# CERP Boundary Activity Recap

- Solicited feedback from Steering Committee on the CERP Community Boundary and CERP Emissions Inventory Boundary at April's Steering Committee Meeting #8 and by email.
- Received additional feedback from Steering Committee in between meetings.

# CERP Boundary Activity Recap

- **Steering Committee identified **pollution sources** inside the CERP Emissions Boundary.**
  - R&A Trucking Company
  - Pick-n-Pull
  - WM - Alameda County Dumping
  - Sterling Environmental Corporation
  - Oyster Bay Regional Shoreline
  - East Bay Crematory
  - Trash around Arroyo
  - Sobrante Park
  - Zero Waste Energy @ Davis
  - Rancho San Antonio
- **Steering Committee identified **community assets and areas** outside the CERP Community Boundary.**
  - Rancho San Antonio and San Antonio Park Field
  - Gwen Jackson Park
  - Highland Hospital
  - North area along the I-580 and Coolidge Avenue

# Continuing the CERP Boundaries Activity

**Small Group Breakout Discussion** in shared [Googlemap](#)

- For the CERP Community Boundary, identify **community assets or areas** that may fall outside of the Boundary.
- For the CERP Community Boundary, identify **areas** that should be removed.

# Next Steps

- Co-chairs, CBE and Air District staff will synthesize Steering Committee ideas from today into CERP Community Boundary.
- If ready, at the July's CSC #10 meeting, CSC members will vote on the approval of the CERP Community Boundary.



# East Oakland Environmental Justice Announcements and Updates

Co-Chairs Aiyahna Johnson and Charles Reed

# Feedback on Meeting & Next Steps

Fill out the post-meeting survey:

- English: <https://forms.gle/B2SYLBNg6aUorF5u6>
- Spanish: <https://forms.gle/Du8m9thM85jyCy7p7>

Fill out the In-person/ Hybrid Meeting Accessibility Poll

- English: <https://forms.gle/3q6EVTVZMXkxA62R8>
- Spanish: <https://forms.gle/2VFfpxino9XzfZeU9>

Next Meeting will be held **Thursday, July 13th, 2023**

**Thank You!**

**See You Soon!!**