



AB 617:

A Community Centered Program





Simultaneous Interpretation

Para escuchar el taller en el idioma de su elección, deberá usar un teléfono separado para llamar a la línea de conferencia de interpretación.

**Línea de conferencia en español:
1-888-489-0410**

如要用您選擇的語言聆聽討論會內容，
您需要用另一支電話撥打會議口譯專線。

粵語會議專線：
1-888-489-0411

Para marinig ang Workshop sa wika na napili ninyo, kailangan ninyong gumamit ng hiwalay na telepono, at ang matawagan ang linya para sa pagsasalin ng kumperensiya.

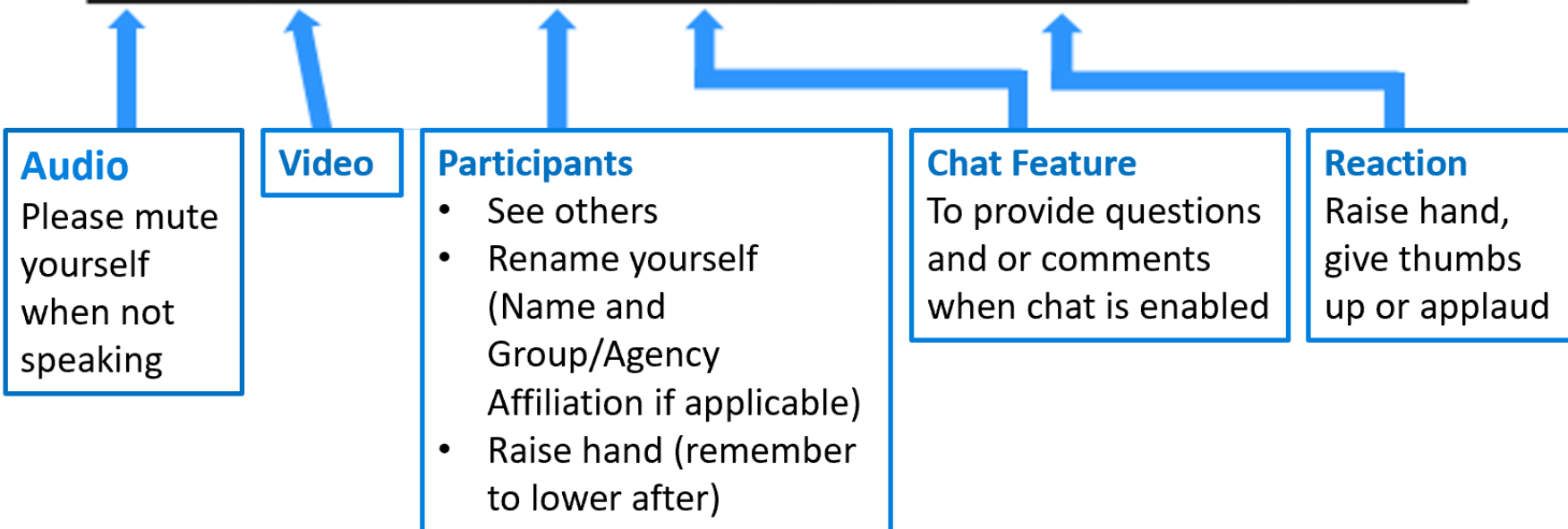
**Linya ng Telepono para sa Pagsasalin
ng Kumperensiya sa Tagalog:
1-888-489-0412**

Zoom Instructions

Note: The Air District will be recording this public workshop

How to Use 

Black menu bar at top or bottom of screen:



Cómo utilizar

Barra de menú negra en la parte superior o inferior de la pantalla



Audio

Por favor, silénciese cuando no hable

Video

Participantes

- Ver otros
- Cambie su nombre (nombre / afiliación de la agencia, si corresponde)
- Levantar la mano (recuerde bajar después)

Característica de chat

Para proporcionar preguntas o comentarios cuando el chat está habilitado

Reacción

Levanta la mano, levanta el pulgar o aplaude

Virtual Participation Principles

Principios de la participación virtual

- **One** person speaks at a time.
- Be **respectful** of one another's opinions.
- Please **mute** yourself when not speaking.
- **Share video** so we can stay visually connected.
- Technology happens - please be **flexible and patient**.
- **Una** persona habla a la vez.
- **Respete** las opiniones de las otras personas.
- Por favor **silencie** su micrófono cuando no esté hablando.
- **Comparta su video** para poder mantenernos conectados visualmente.
- La tecnología a veces falla - por favor sea **flexible y paciente**.

Welcome!

Veronica Eady

Senior Deputy Executive Officer

Santa Clara County Supervisor Cindy Chavez, District 2

Chair, Board of Directors, Bay Area Air Quality Management District

Alameda County Supervisor Nate Miley, District 4

Board of Directors, Bay Area Air Quality Management District

Agenda

- Welcome
- Community Voices
- AB 617 Program
- Nomination
- Community Perspective
- Discussion
- Stretch Break
- World Cafés

Bay Area Air Quality Management District

August 12, 2021





Community Video

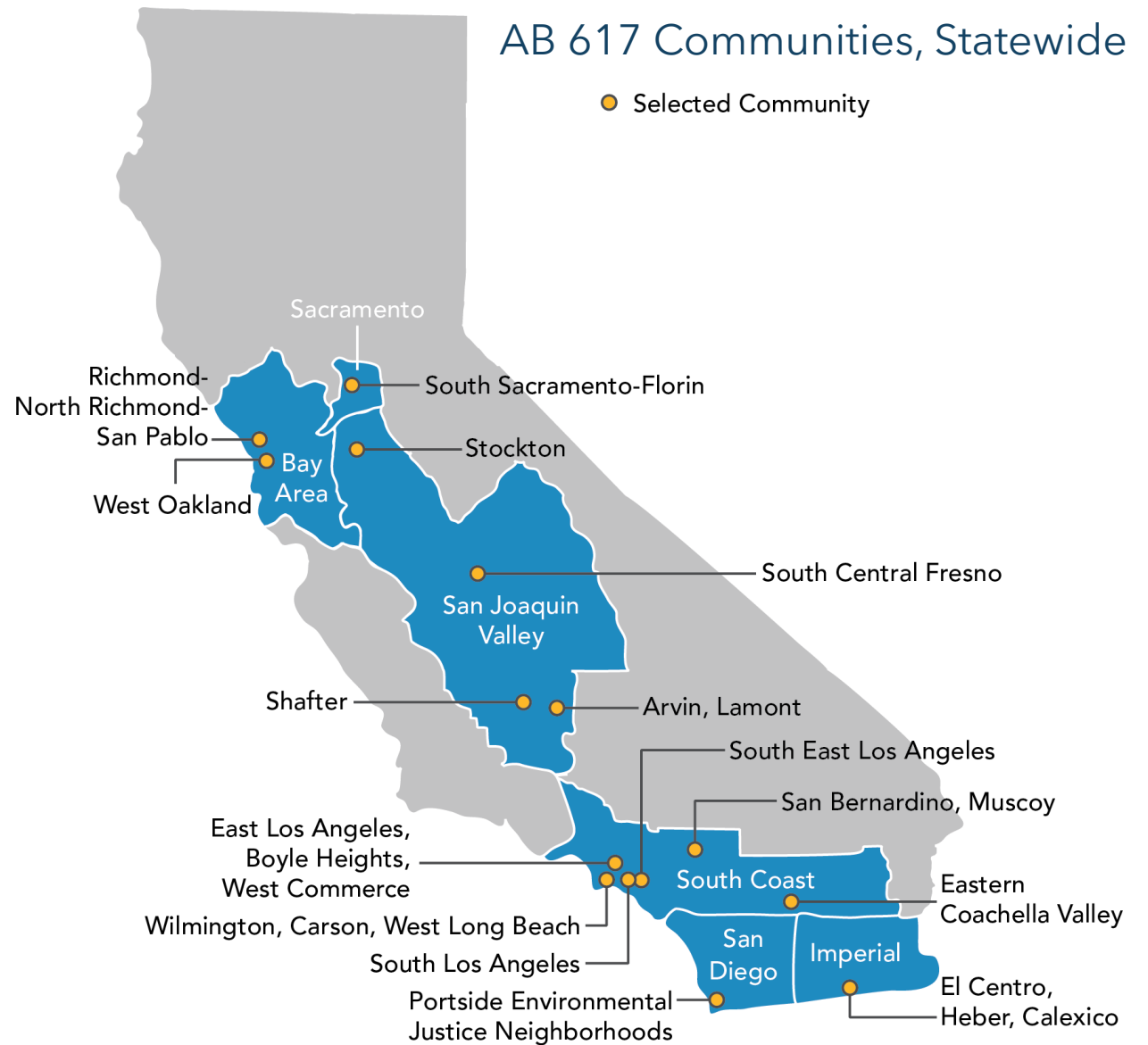


Program Plan

Greg Nudd
Deputy Air Pollution Control Officer

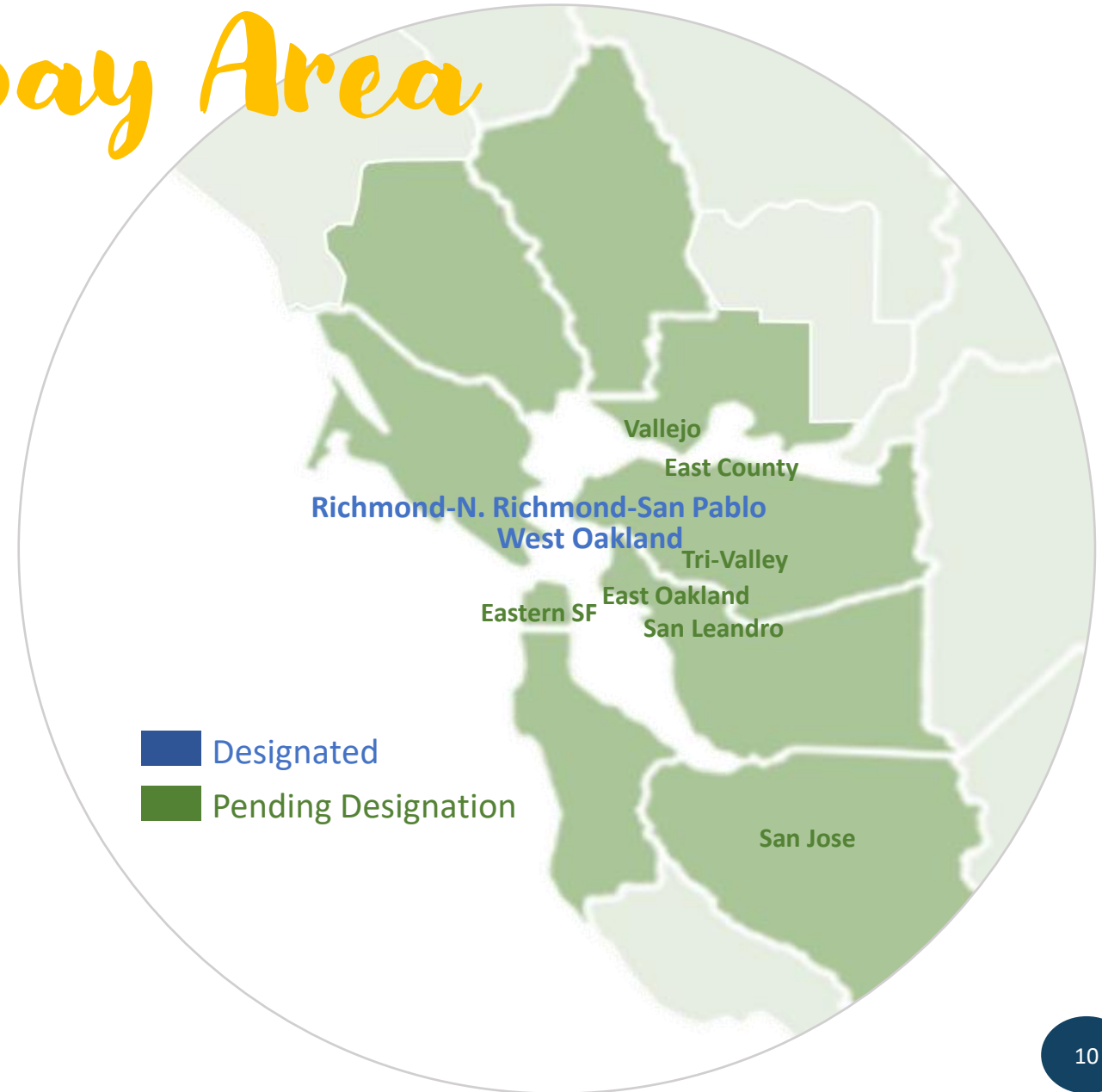
About AB 617

- Responds to history of environmental injustice in low-income, communities of color.
- Partner with community to address higher levels of air pollution in historically disadvantaged communities.
- Address exposure to harmful air pollutants in impacted communities.



AB 617 in the Bay Area

- Regional air quality has improved significantly; there are still significant inequities in exposure.
- Air pollution sources, e.g., freeways, ports, and polluting industry are often located in low-income communities of color.
- Two communities have been designated by the state for plan development.
- Program designed to benefit all impacted communities.



Community Centered

Build community knowledge about air quality, best practices. Build Air District capacity to work in community.

Gather what we know about community and air quality. Improve what we know.

Track progress on strategies. Report progress on strategies. Track and report on progress of entire program.

Implement emission reduction strategies and enforcement measures.

Work with community to tell story about community. Perform root cause analysis to ensure "right" problems addressed.

Set community goals and targets. Select emission reduction strategies and enforcement measures.

Form and support community decision making partnership. Develop committee charter and community engagement plan.



What's in the program?

AB 617 Program						
Build Shared Capacity	Understand Community	Share Community Story	Support Community Decision Making	Plan Solutions	Take Action	Evaluate Progress
Direct Community Support	About Community	Accessible Community Materials	Form Steering Committee	Community Goals and Targets	New Rules on Sources Impacting Community	Track Progress
Foundations in Air Quality	Lived Experiences	Define Issues	Committee Meetings	Strategies	Implemented Enforcement Measures	Report Annual Progress
Best Practices	Air Pollution	Root Cause	Committee Charter	Enforcement Measures	Incentives to Improve Local Air Quality	Evaluate Overall Program
Staff Training	Existing Efforts		Community Engagement Plan		Additional Strategies	
Trust Building			Maintain Partnership			

Implementation

West Oakland Implementation

Build Shared Capacity	Understand Community	Share Community Story	Support Community Decision Making	Plan Solutions	Take Action	Evaluate Progress
Direct Community Support	About Community	Accessible Community Materials	Form Steering Committee	Community Goals and Targets	New Rules on Sources Impacting Community	Track Progress
Foundations in Air Quality	Lived Experiences	Define Issues	Committee Meetings	Strategies	Implemented Enforcement Measures	Report Annual Progress
Best Practices	Air Pollution	Root Cause	Committee Charter	Enforcement Measures	Incentives to Improve Local Air Quality	Evaluate Overall Program
Staff Training	Existing Efforts		Community Engagement Plan		Additional Strategies	
Trust Building			Maintain Partnership			

- Unplanned for FYE22
- Completed
- FYE22/Ongoing

Implementation

Richmond-North Richmond-San Pablo

Build Shared Capacity	Understand Community	Share Community Story	Support Community Decision Making	Plan Solutions	Take Action	Evaluate Progress
Direct Community Support	About Community	Accessible Community Materials	Form Steering Committee	Community Goals and Targets	New Rules on Sources Impacting Community	Track Progress
Foundations in Air Quality	Lived Experiences	Define Issues	Committee Meetings	Strategies	Implemented Enforcement Measures	Report Annual Progress
Best Practices	Air Pollution	Root Cause	Committee Charter	Enforcement Measures	Incentives to Improve Local Air Quality	Evaluate Overall Program
Staff Training	Existing Efforts		Community Engagement Plan		Additional Strategies	
Trust Building			Maintain Partnership			

- Unplanned for FYE22
- Completed
- FYE22/Ongoing



Implementation

All Pending Communities						
Build Shared Capacity	Understand Community	Share Community Story	Support Community Decision Making	Plan Solutions	Take Action	Evaluate Progress
Direct Community Support	About Community	Accessible Community Materials	Form Steering Committee	Community Goals and Targets	New Rules on Sources Impacting Community	Track Progress
Foundations in Air Quality	Lived Experiences	Define Issues	Committee Meetings	Strategies	Implemented Enforcement Measures	Report Annual Progress
Best Practices	Air Pollution	Root Cause	Committee Charter	Enforcement Measures	Incentives to Improve Local Air Quality	Evaluate Overall Program
Staff Training	Existing Efforts		Community Engagement Plan		Additional Strategies	
Trust Building			Maintain Partnership			

- Unplanned for FYE22
- Completed
- FYE22/Ongoing



Specific Activity Examples

Build Shared Capacity

- Capacity building grants
- Training on air quality through Bay Air Center
- Land use best practices
- Train Air District staff on environmental justice and equitable community engagement
- Build relationships

Understand Community

- Preliminary boundary
- Community description
- Known community concerns
- Culture, history and strengths
- Emissions inventory
- Air quality measurement data
- Health risks from air pollution

Plan Solutions

- Regulatory strategies
- Enforcement measures
- New incentive programs

Take Action

- New and/or amended rule for stationary sources
- Enforcement measures
- New incentive programs

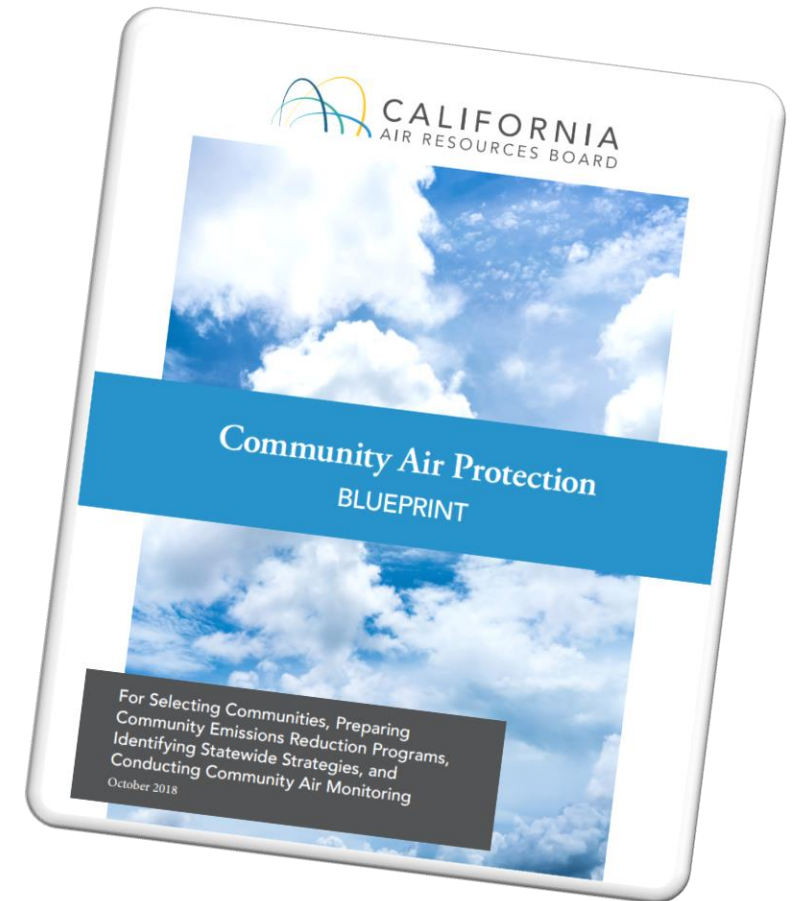


Nomination

Veronica Eady
Senior Deputy Executive Officer

Nomination Process

- Required by state to continue receiving full program funding
- Needs to follow state nomination process
- Community nomination stems from Air District “high priority recommendations” submitted to state in 2018
- Community-readiness is a significant driver for next nomination



Nomination: East Oakland

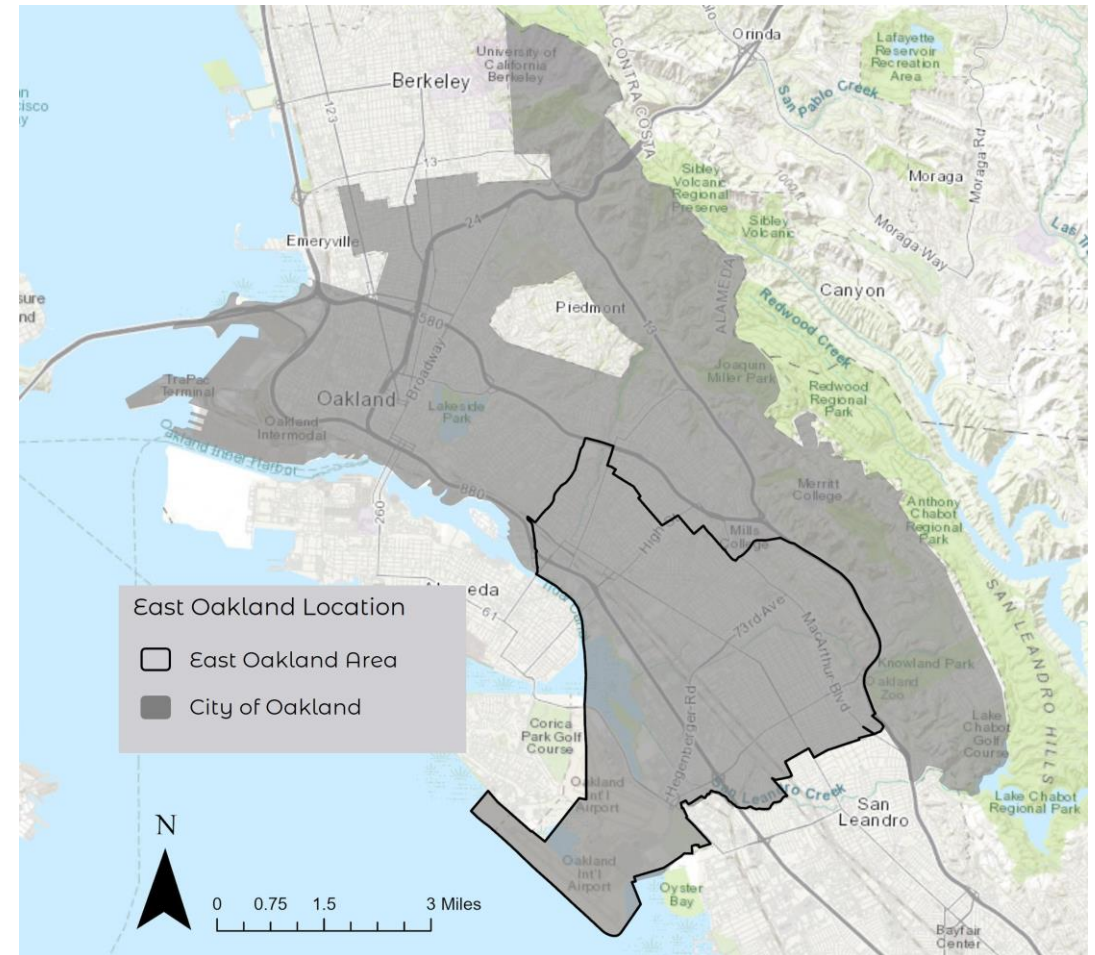
- Community advocates for selection every year
- High levels of air pollution and health burdens
- Low-income, community of color with history of environmental injustice
- Decades of building community capacity and leadership development
- Existing inter-neighborhood coalition and collaboration



Source: The BlackHour.com, CC By 2.0

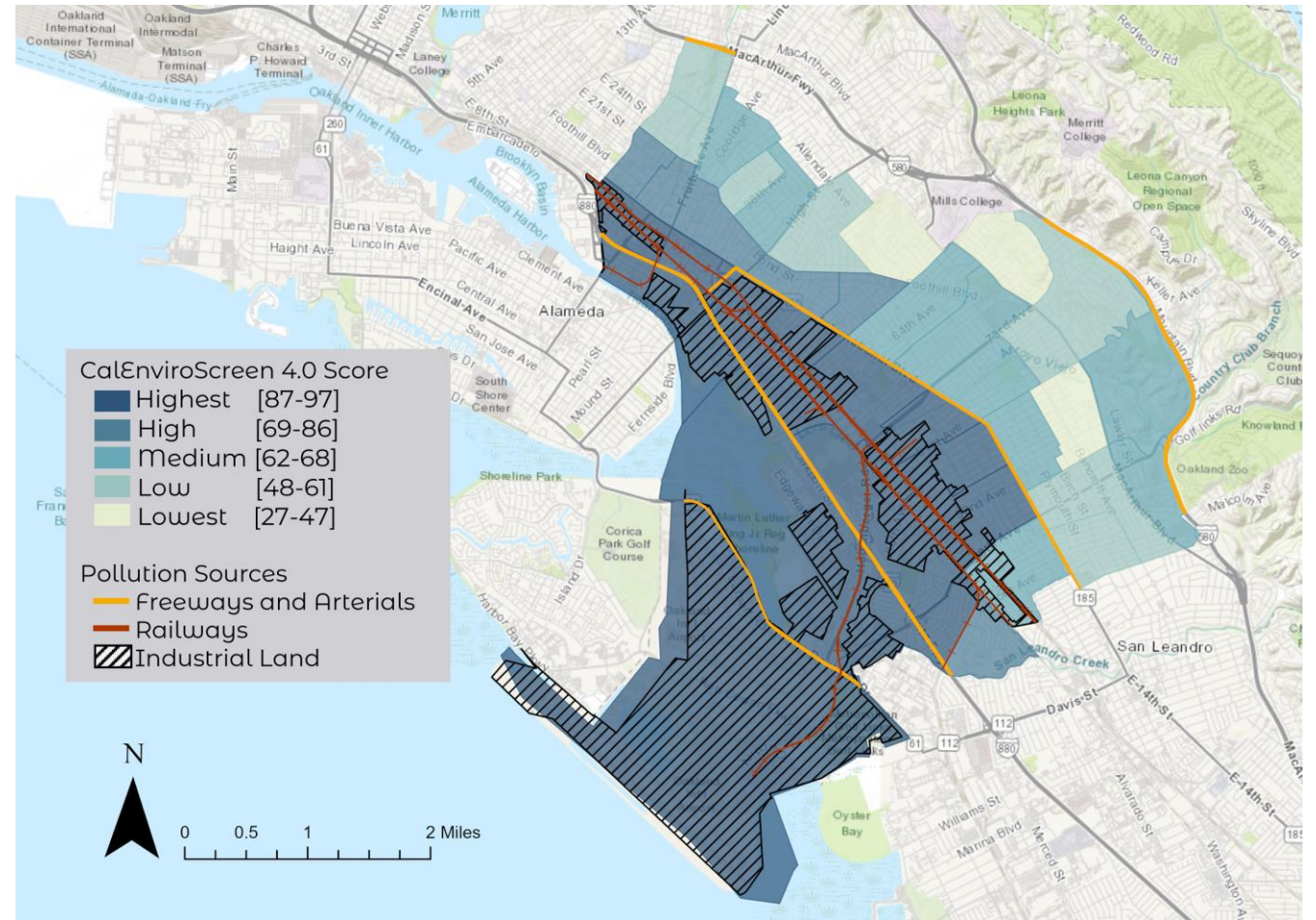
Preliminary Boundary

- Includes census tracts that are in top 30% of pollution burden statewide (CalEnviroScreen)
- Reflects East Oakland Neighborhood Initiative area
- Aligns with City's East Oakland planning areas and County's Public Health regions



East Oakland Air Pollution

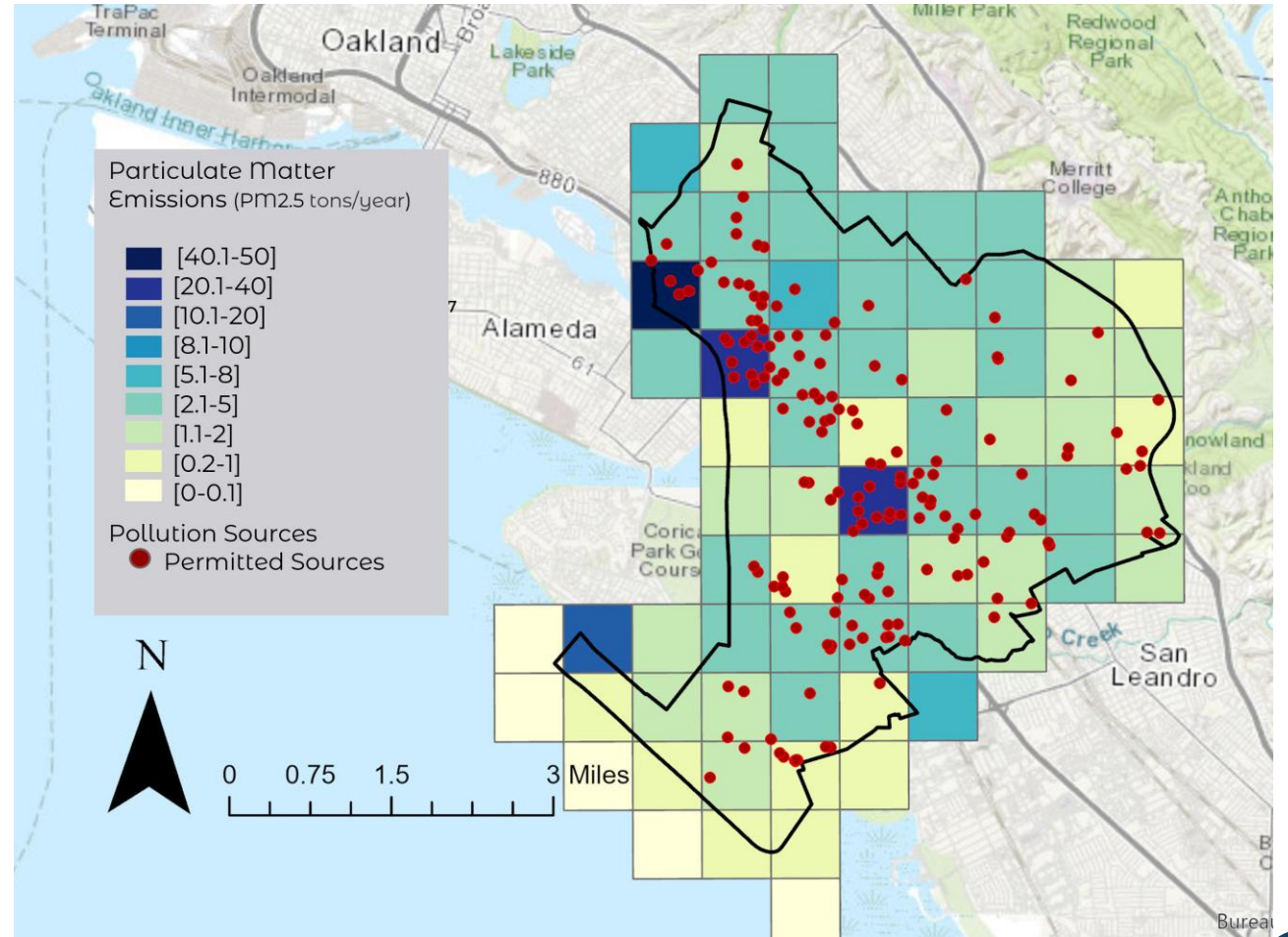
- Much of East Oakland experiences high levels of pollution
- Major goods movement and transportation corridor
- Large areas adjacent to industry and truck magnet businesses



Areas in East Oakland with High Pollution Burden, CalEnviroScreen 4.0

Sources of Air Pollution

- Stationary sources:
AB&I Foundry, concrete manufacturing, food processing
- Mobile sources:
Freeways, airport, rail and truck routes, ships
- Area sources:
Residential fuel combustion, commercial cooking

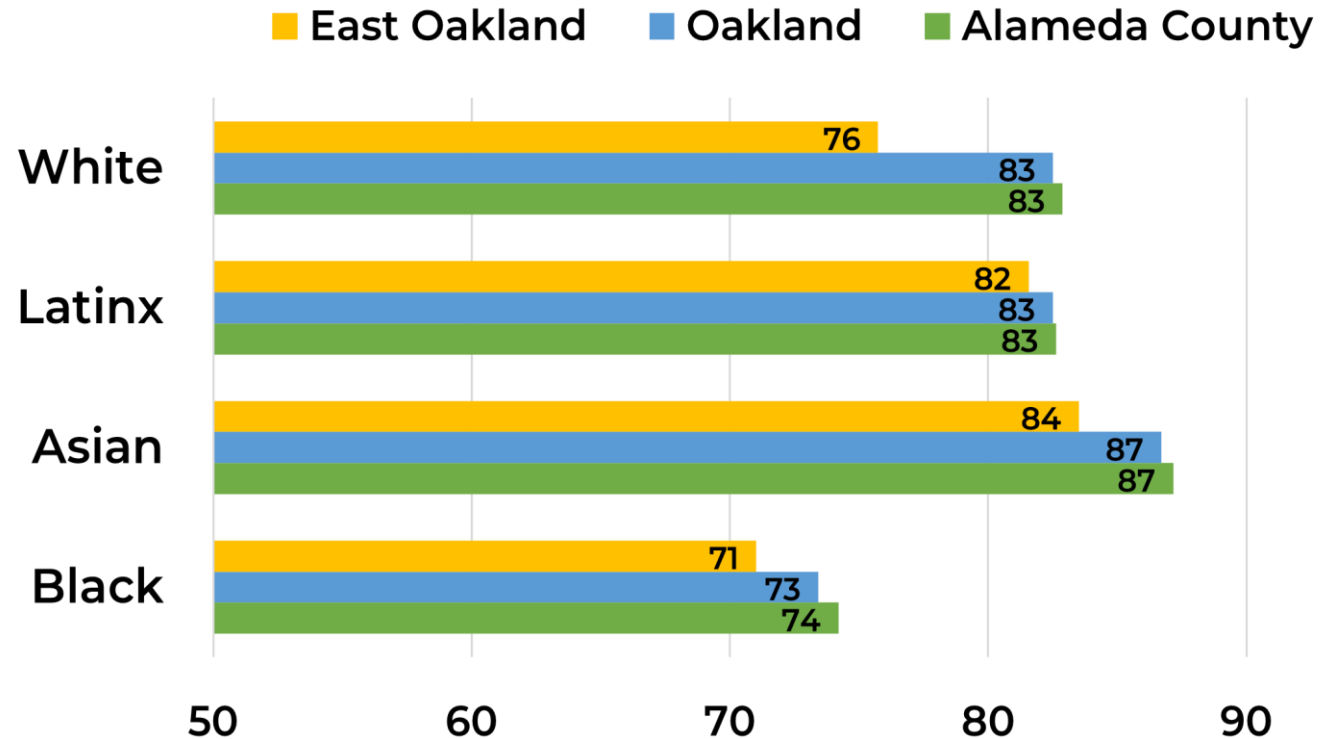


Areas in East Oakland with high PM2.5 emissions (tons/year), BAAQMD

Disparate Health Outcomes

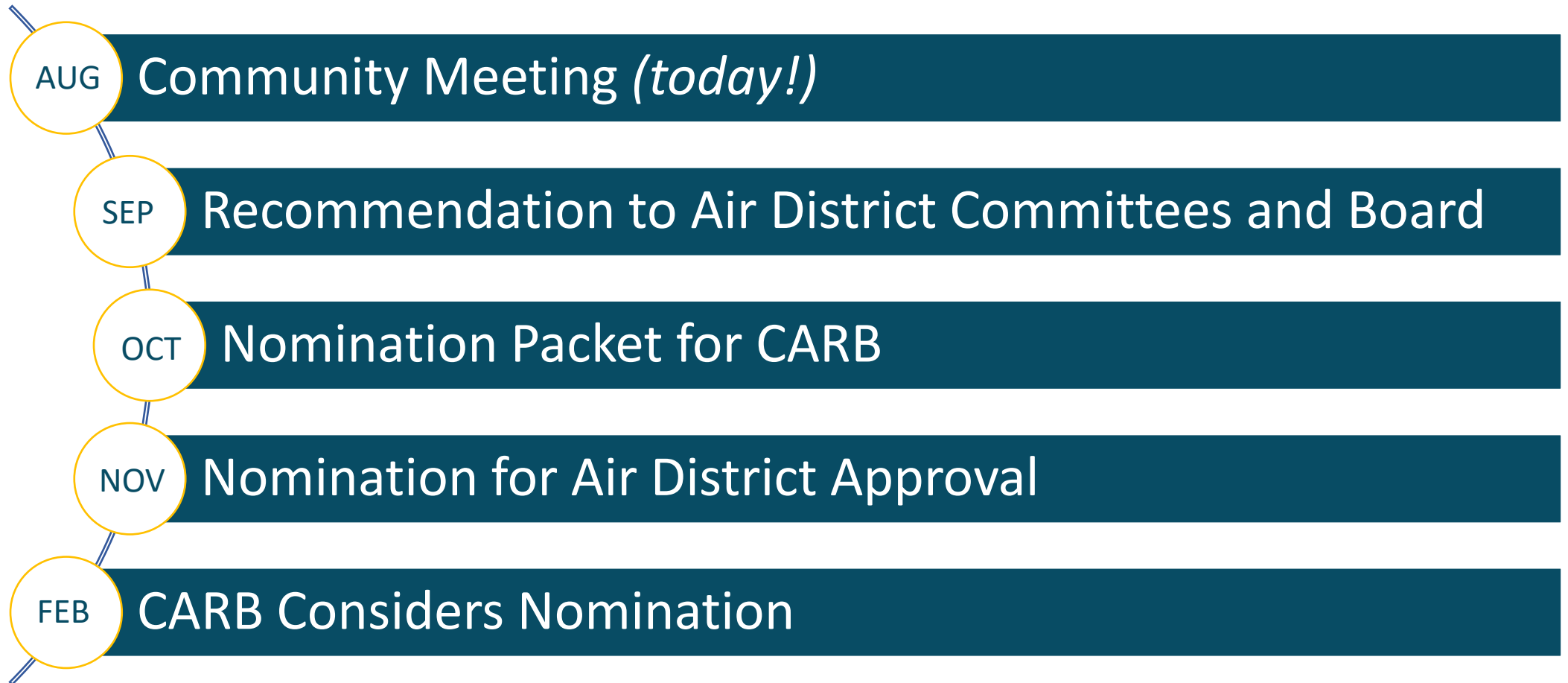
- Lower life expectancy, especially for Black East Oaklanders
- Black East Oaklanders experience higher rates of mortality from lung cancer, heart disease, and stroke than Oakland and Alameda County residents.

Life Expectancy at Birth



Alameda County Public Health Department - CAPE, with data from Alameda County vital statistics files. (2016-2020 data)

Designation Timeline





Community Perspective

Susan Goolsby

Communities for a Better Environment





Community Perspective

Mykela Patton

Communities for a Better Environment



Community Perspective

Esther Goolsby
Communities for a Better Environment



Community Perspective

Ms. Cecilia Cunningham
Communities for a Better Environment



Community Perspective

Angela Pineda
New Voices are Rising



Community Perspective

Ms. Margaret Gordon

West Oakland Environmental Indicators Project



Community Perspective

Tony Kelly

Bayview Hunters Point Community Advocates



Community Perspective

Alfredo Angulo

Path to Clean Air in Richmond-North Richmond-San Pablo
CERP Steering Committee Co-Chair





Discussion

Veronica Eady
Senior Deputy Executive Officer



World Café Slides



Program Plan...

World Cafe

Program Plan

01

SHARE
INFORMATION
ABOUT PROGRAM
AND HEAR YOUR
REACTIONS

02

LEARN HOW YOU
WOULD LIKE TO
ENGAGE IN
PROGRAM

03

IDENTIFY WAYS TO
IMPROVE
PROGRAM IN
FUTURE

Program Plan

Build community knowledge about air quality, best practices. Build Air District capacity to work in community.

Track progress on strategies. Report progress on strategies. Track and report on progress of entire program.

Implement emission reduction strategies and enforcement measures.

Set community goals and targets. Select emission reduction strategies and enforcement measures.



Gather what we know about community and air quality. Improve what we know.

Work with community to tell story about community. Perform root cause analysis to ensure "right" problems addressed.

Form and support community decision making partnership. Develop committee charter and community engagement plan.

Program Plan Discussion

- **Via Chat:** Which **element** most excites you? In other words, which would you most like to participate?
- What are your **immediate reactions** to the program plan?
- What would your **community need** to co-lead one or more of the program elements?
- Is there anything **missing** that could be included in the next iteration of the program?



Getting Started...

World Cafe

Getting Started

01

HEAR YOUR IDEAS
ON HOW TO GET
STARTED

02

SHARE OUR IDEAS
ON HOW TO GET
STARTED

03

IDENTIFY
ADDITIONAL WAYS
TO GET STARTED

Getting Started...

ABOUT COMMUNITY

- Preliminary community boundary
- Community description

LIVED EXPERIENCE

- Known community concerns
- Community culture, history and strengths

AIR POLLUTION

- Emissions inventory
- Pollution measurement data
- Health risks from air pollution

EXISTING EFFORTS

- Compliance and enforcement “at a glance”
- Regulatory setting
- Incentives
- Local plans and policies

....with understanding community

Getting Started Discussion

- What does **air quality** mean to you?
- What information do you have about your community's air quality **concerns**?
- What information do you need to **better understand** air quality in your community?
- Any other information needed?



Capacity Building...

World Cafe

Capacity Building

01

SHARE
INFORMATION
AND HEAR YOUR
REACTIONS

02

LEARN ABOUT THE
CAPACITY
BUILDING YOU
WANT

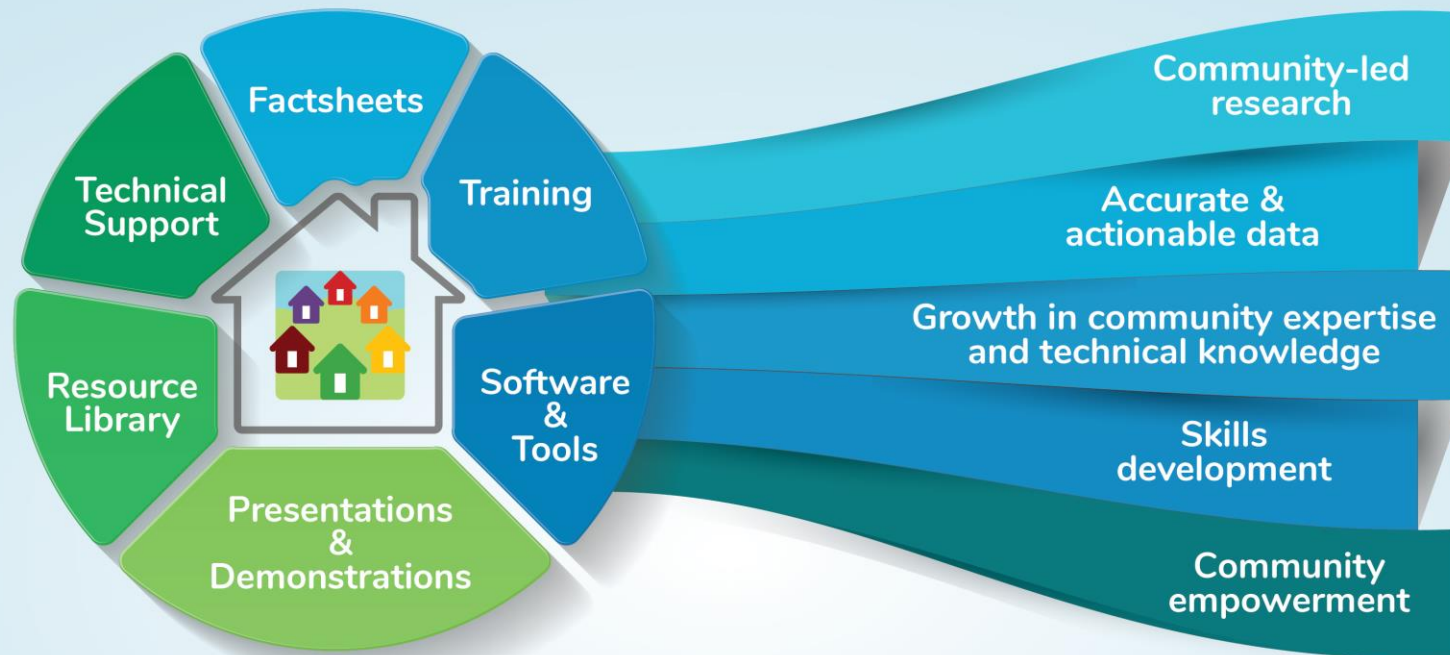
03

IDENTIFY WAYS TO
ENSURE
ACCESSIBILITY AND
ACCESS

Capacity Building



Services and Community Benefits



For more information, contact bayaircenter@baaqmd.gov

Capacity Building

Coming Soon!

James Cary Smith Community Grant

- Up to \$100,000 per organization, up to three years
- Funds to increase local participation in improving community environmental health
- Learn more during optional webinars on August 31 and Sept. 16
- Applications accepted through **October 1 at 5:00PM**
- More info: www.baaqmd.gov/communitygrants
- Questions? Email communitygrants@baaqmd.gov

Capacity Building Discussion

- **Chat:** In a few words, what does **building capacity** mean to you?
- What **resources would be useful** for you and your community?
- What can the Air District do to **ensure resources are accessible** to you and your community?

Next Steps



Implement West Oakland community action plan

Develop Community action plan in Richmond-North Richmond-San Pablo

Nominate East Oakland for community action plan

Provide James Cary Smith Community Grant Funding

Continue Building shared capacity and understanding of pending communities





Workshop Evaluation



The Air District Wants Your Feedback!

¡El Distrito de Aire Quiere Sus Impresiones!

<https://www.surveymonkey.com/r/HTRJ6W2>



Gracias!

Thank you!



Email: AB617info@baaqmd.gov for more information.