

**Bayview Hunters Point/  
Southeast San Francisco  
Community Emission Reduction Plan (CERP)  
Community Steering Committee #6**

**June 18, 2024  
Southeast Community Center,  
1500 Evans, San Francisco, CA**



# Welcome and Introductions

# Agenda

- Welcome and Introductions
- Questions and Answers
- Mapping Report Back
- Review Bayview Hunters Points/Southeast San Francisco Facilities List
- Blueprint 2.0 and the Elements of Community Emissions Reduction Plan
- Wrap up and Action Steps

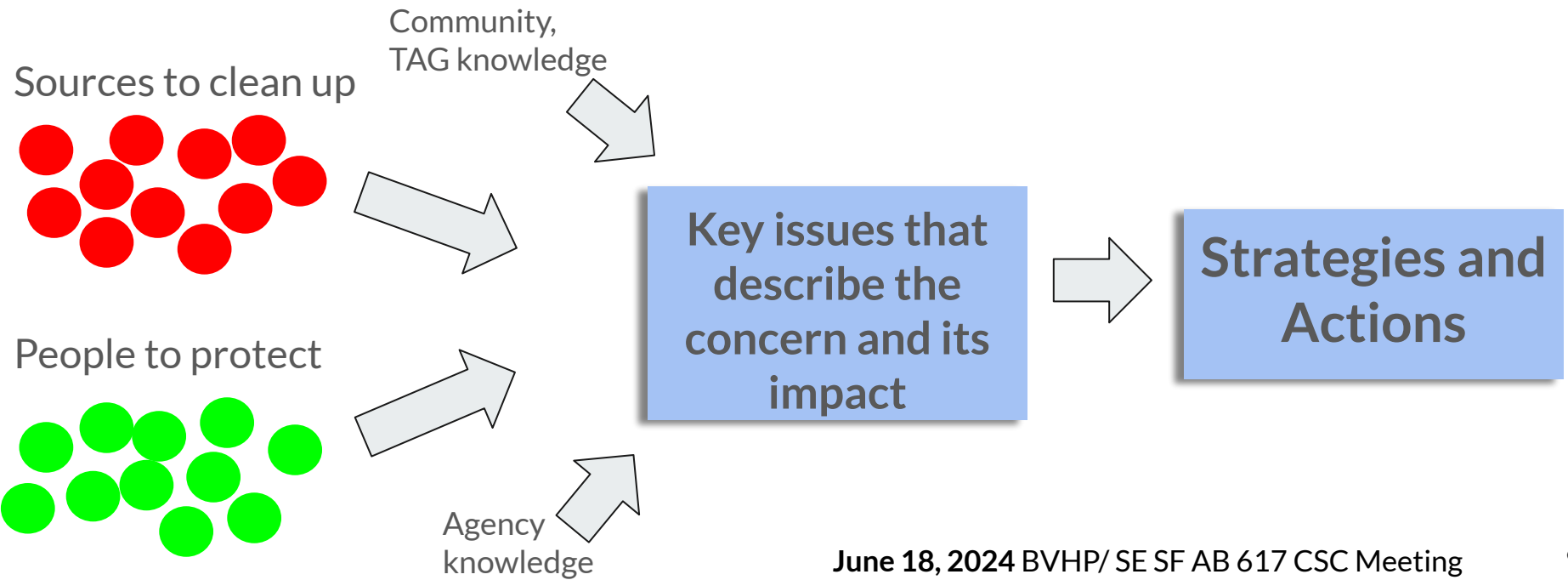
# Questions and Answers

[bit.ly/CERP-QA](https://bit.ly/CERP-QA)

# Mapping Report Back

Steve Reid, Assessment, Inventory  
and Modeling Division

# Intention of the Mapping Exercises



# A Look Back at April and May

## April: 4 community maps



June 18, 2024 BVHP/ SE SF AB 617 CSC Meeting

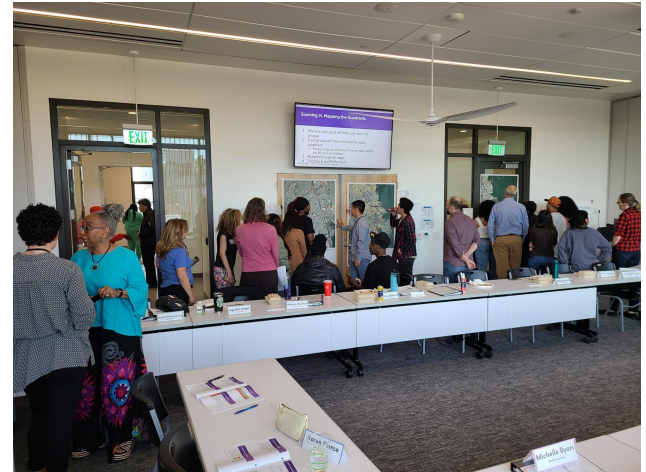


Source of  
Concern



Vulnerable  
Population

## May: 4 quadrant maps



# What do the numbers say?

Item	Number
Maps	8
Total sources of concern	155
Total vulnerable populations	151
Unique sources of concern	85
Unique vulnerable populations	98





# What showed up on multiple maps?

## *Some examples (not a complete list!)*

### Sources of Concern

---

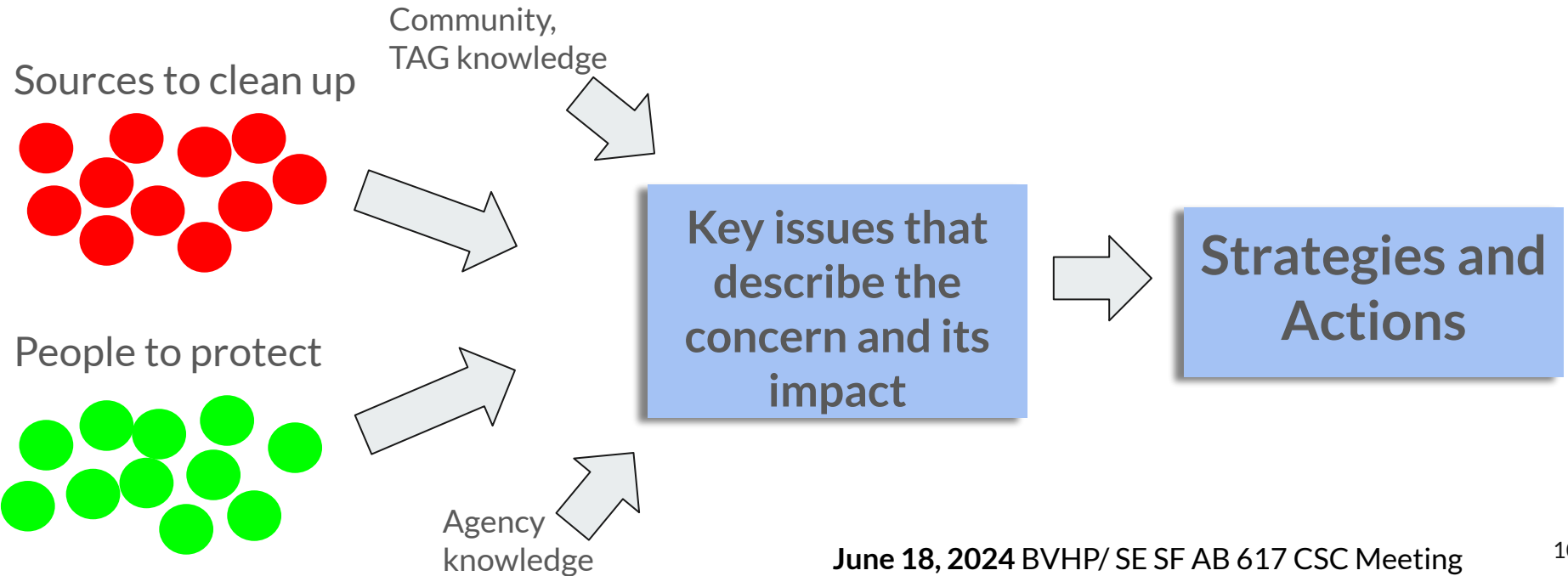
- Naval Shipyard
- Darling Industries
- I-101 and I-280 Freeways
- Southeast Treatment Center
- Recology
- Yosemite Slough

### Vulnerable Populations

---

- Alice Griffith Apartments
- MLK Park and Pool
- Unhoused populations
- Silver Terrace Athletic Fields
- Bret Harte Elementary School
- Dr. George Davis Senior Center

# How can we use this information?



# Introduce Bayview Hunters Points/Southeast San Francisco Facilities List

# Facility List Requested by the CSC

## *Some Background*

### Facilities List from April Meeting

List of Permitted Facilities Shown on the Community Map

Number	Business Name	Business Type
1	San Francisco South East Treatment Plant	GOVERNMENT
2	Lowpensky Moulding	INDUSTRY
3	Anchor Brewing LLC	FOOD PROCESSING/DINING
4	Fred Warden & Son	COMMERCIAL
5	Pan-Glo Services Inc	INDUSTRY
6	Four Mile Cleaners	DRY CLEANER
7	Masterpiece Artist Canvas	INDUSTRY
8	Sea Breeze Cleaners	DRY CLEANER
9	Darling International	FOOD PROCESSING/DINING
10	Pacific Gas and Electric Company	GAS STATION
11	Leland Cleaners	DRY CLEANER
12	Hans Art Automotive	AUTOBODY
13	Cornerstone Evangelical Baptist Church	COMMERCIAL
14	Anderson Enterprises Inc	AUTOBODY
15	Recology San Francisco	GOVERNMENT
16	San Francisco General Hospital	HOSPITAL
17	One Hour Cleaners	DRY CLEANER
18	Clean N Save Dry Cleaners	DRY CLEANER
19	D/D Auto Body Repair	AUTOBODY
20	Recology San Francisco Hazardous Waste Collection	GOVERNMENT
21	Alioto's Garage Inc	AUTOBODY
22	United States Mint at San Francisco	COMMERCIAL
23	Pacific Collision Care	AUTOBODY
24	Chilton Auto Body Industrial Inc	AUTOBODY
25	San Francisco Municipal Transit Agency	GOVERNMENT
26	Luxor Cab Company	AUTOBODY
27	Brizuela's Body Shop	AUTOBODY
28	Cole Cleaners	DRY CLEANER
29	Plant Architectural Woodwork	INDUSTRY
30	Twenty Tank Brewery	FOOD PROCESSING/DINING
31	San Francisco Municipal Railway	GOVERNMENT

*What was missing?*



- Unpermitted/exempt facilities
- Facilities with active permit applications
- Facilities with expired permits or other compliance issues
- Facilities with complaints or violations over the past 3 years
- Brownfield sites

# Facility List Requested by the CSC

## *Data Gathering Process*

- Started from the list of facilities distributed at the April CSC meeting and flagged on the original 4 maps
- Added other facilities identified by the community during the April and May mapping exercises
- Began working with the District's Engineering and Compliance & Enforcement Divisions to categorize the facilities and add information on exemptions, compliance issues, etc.

# Facility List Requested by the CSC

## *What we have so far*

### **Unpermitted Facilities**

- Facilities with active permit applications
- Facilities with specific exemptions from permitting requirements
- Any other unpermitted facilities from the mapping exercises

### **Permitted Facilities**

- Facilities with expired permits or other compliance issues
- Facilities that are permitted and in compliance

# Group Discussion

# Air Quality Fundamental Videos

**BLACK  
LATINO  
NATIVE AMERICAN  
PACIFIC ISLANDER**

**89%**  
OF THE POPULATION  
IN MOST IMPACTED  
COMMUNITIES

CalEnviroScreen

The infographic features a stylized illustration of a community with houses, trees, and a road with a truck and a van. Below the road, there are industrial structures like oil pumps and storage tanks.

Helpful series of 2–5-minute videos on air pollution, health effects and types of emission sources.

[ww2.arb.ca.gov/air-quality-fundamentals](http://ww2.arb.ca.gov/air-quality-fundamentals)

Climate change - Climate change refers to long-term shifts in temperatures and...

**What can the government do about it?**

The thumbnail shows a cityscape with cars and trucks on a road, with a grey sky and smokestacks in the background.

Climate change - Climate change refers to long-term shifts in temperatures and...

**air pollutants**

The thumbnail shows a busy highway with various vehicles, including cars, trucks, and a bus, with a grey sky and smokestacks in the background.

**Evaluating health effects**

**Acute = Short Term**

**Acute and Chronic**

**Chronic = Long Term**

The thumbnail features three stick figures: one standing, one sitting, and one in a wheelchair, each with a text box below them. The background is a simple room with a window and a light fixture.

Types of Emissions Sources

EMISSION SOURCE CATEGORIES

- STATIONARY
- AREA
- MOBILE

Watch on YouTube

The thumbnail shows a truck on a road with smoke coming from its tailpipe. The background is a simple landscape with a grey sky.

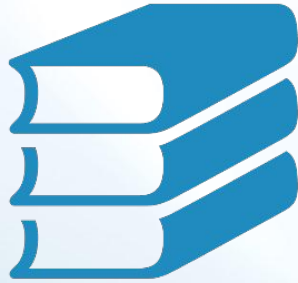




# Community Air Protection Program Blueprint 2.0

Bayview Hunters Point / Southeast San Francisco  
Community Steering Committee  
Meeting #6 June 18, 2024

# Blueprint 2.0 Responds to Statutes and Program Experience

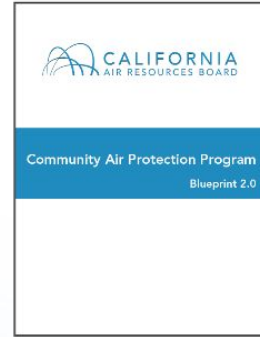


**AB 617 (2017)**

**AB 197 (2016)**

**AB 1749 (2022)**

Statutes



**Blueprint 2.0**

Statewide Strategy  
& Implementation  
Guidance

# Community Air Protection Program Blueprint 2.0

## Part One

### Statewide Strategy

- Vision for racial equity and environmental justice
- Goals
- Guiding principles of the Program
- Actions



## Part Two

### Implementation Guidance

- Roles, requirements, partnerships
- Transparency and accountability
- Funding
- CERP development, implementation, and tracking



## Appx

### Appendices

- Appendix A: Glossary
- Appendix B: CERP Checklist

Criteria	
<b>Health-Based Air Quality Actions</b>	<input type="checkbox"/>
Develop actions to reduce negative health impacts by: <ul style="list-style-type: none"> <li>• Reducing emissions of, and exposure to, toxic air contaminants that contribute to the cumulative exposure burden within the community.</li> <li>• Reducing emissions of, and exposure to, local sources of PM<sub>2.5</sub> that contribute to the cumulative exposure burden within the community.</li> </ul>	<input type="checkbox"/>
<b>Community Steering Committee</b>	<input type="checkbox"/>
Provide documentation on the community steering committee: <ul style="list-style-type: none"> <li>• Membership, including community representation.</li> <li>• Charter that covers the following topics:               <ul style="list-style-type: none"> <li>○ CAC objectives.</li> <li>○ Roles and responsibilities.</li> </ul> </li> </ul>	<input type="checkbox"/>

# Community Steering Committee

## Community Consultation written into the Law

Health and Safety Code, Section 44391.2,  
subdivision (c)(2)

"...the district encompassing any location selected pursuant to this subdivision shall adopt, in consultation with the state board, individuals, community-based organizations, affected sources, and local governmental bodies in the affected community, a community emissions reduction program to achieve emissions reductions for the location selected using cost-effective measures identified pursuant to paragraph (4) of subdivision (b)."

## Community Steering Committee

Purpose				
 Identify & prioritize air pollution issues	 Guide actions for: <ul style="list-style-type: none"><li>• Community air monitoring</li><li>• Emissions reduction program</li></ul>	 Define community & its boundaries	 Develop approaches & assist with community outreach	 Track progress
Who should/will be part of it?				
 Residents & community leaders	 Community organizations	 Agencies, e.g. local land use, public health, etc.	 Local business owners or workers & affected sources	 Others

# Required CERP elements

**Final**

public and CARB staff. CARB encourages air districts to address the required elements in a concise manner using plain language.

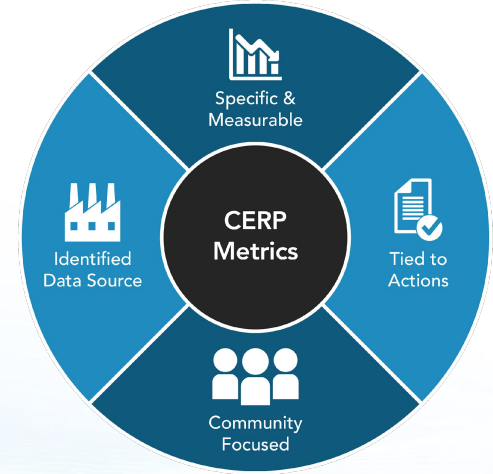
Table B-1 Checklist for Community Emissions Reduction Program Evaluation

Criteria	<input checked="" type="checkbox"/>
<b>Health-Based Air Quality Actions</b>	
Develop actions to reduce negative health impacts by: <ul style="list-style-type: none"> <li>Reducing emissions of, and exposure to, toxic air contaminants that contribute to the cumulative exposure burden within the community.</li> <li>Reducing emissions of, and exposure to, local sources of PM<sub>2.5</sub> that contribute to the cumulative exposure burden within the community.</li> </ul>	<input type="checkbox"/>
<b>Community Steering Committee</b>	
Provide documentation on the community steering committee: <ul style="list-style-type: none"> <li>Membership, including core community representation.</li> <li>Charter that covers the following topics:               <ul style="list-style-type: none"> <li>CSC objectives.</li> <li>Roles and responsibilities.</li> <li>Time, term expectations, stipends (CARB guidance).</li> <li>Eligibility, recruitment, and on-boarding procedures.</li> <li>Meeting frequency.</li> <li>Meeting dates, times, and locations to ensure accessibility/participation.</li> <li>Use of interpretation services at CSC meetings and in broader public outreach efforts.</li> <li>Use of facilitation services.</li> <li>Expectations for the timing and method of communications such as distributing information/data, meeting announcements and agendas, and specifying the expected deadlines for distribution in advance of events/activities.</li> <li>A decision-making process, including whether consensus, majority vote, supermajority, or any other method will be used to approve an item.</li> </ul> </li> </ul>	<input type="checkbox"/>

October 2023      Final: Community Air Protection Blueprint 2.0      148

- Health-Based Air Quality Actions
- Document CSC activity, community engagement, and community profile
- Technical Foundation – emissions inventory
- Emissions and exposure reduction Targets, Actions, and Metrics
- Implementation schedule – achievable in 5 years
- Enforcement plan

# CERP Actions CERP Metrics



# We want to hear from you!

CARB – Community liaison  
Michelle Byars (279) 208-7983  
[Michelle.Byars@arb.ca.gov](mailto:Michelle.Byars@arb.ca.gov)

Community Air Protection  
Program  
[CommunityAir@arb.ca.gov](mailto:CommunityAir@arb.ca.gov)



# Wrap up, Action Steps, & Announcements



# Feedback on Meeting & Next Steps for the CSC

Please fill out the post-meeting survey form.

Next Meeting will be **July 16, 2024**

It is important that you register for each meeting so that we can make any required accommodations.

**Thank You!**  
**See You on July 16, 2024!!**



June 18, 2024 BVHP/ SE SF AB 617 CSC Meeting