

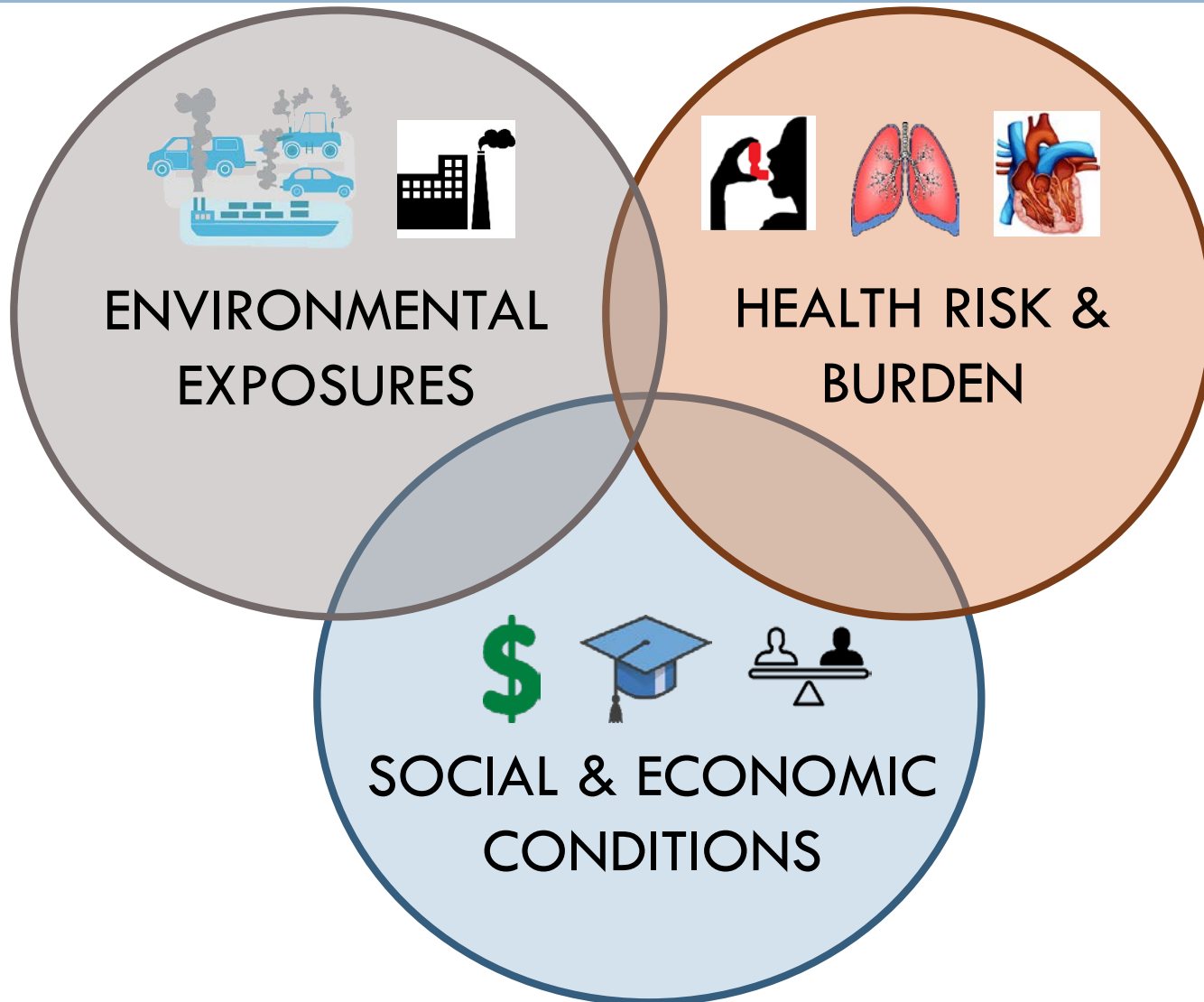
AIR POLLUTION & HEALTH IMPACTS

AB 617 COMMUNITY MEETING
DUBLIN, CA
May 10, 2018



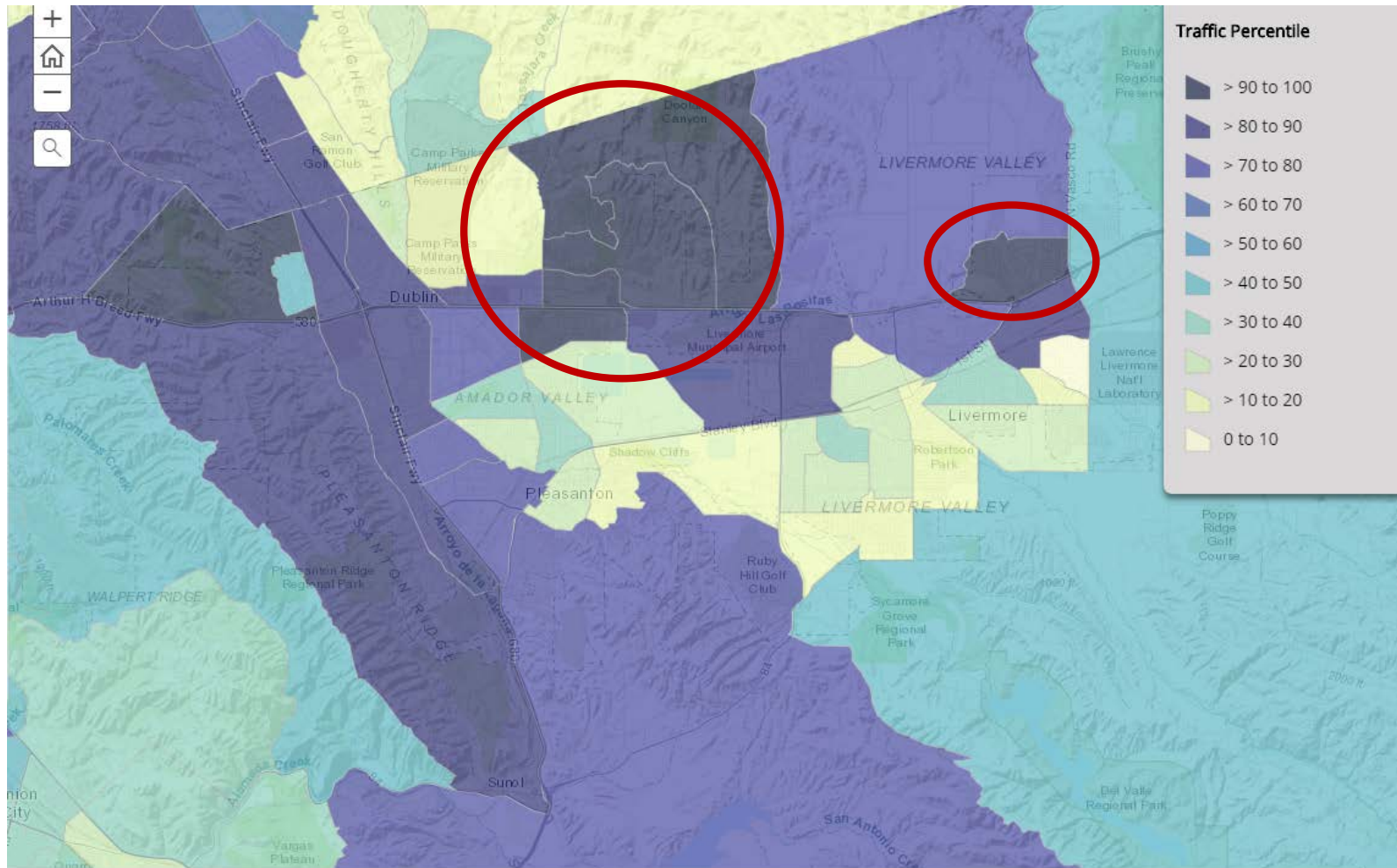
Sandi Gálvez
Director, Health Equity, Policy, & Planning

What puts people at risk of health impacts from air pollution?



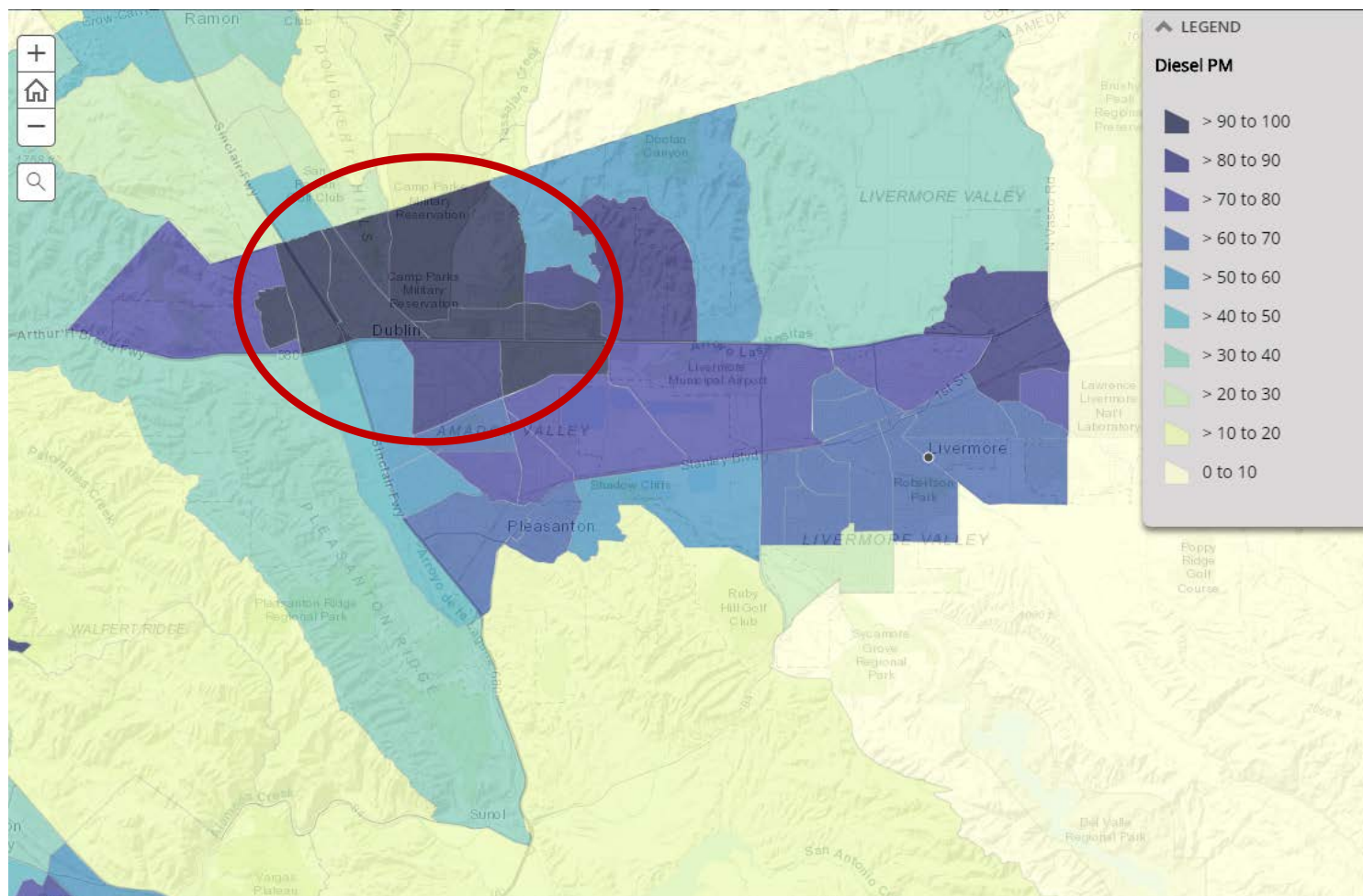
Traffic density is especially high in parts of Dublin, Pleasanton, and Livermore.

Statewide Traffic Density Percentile



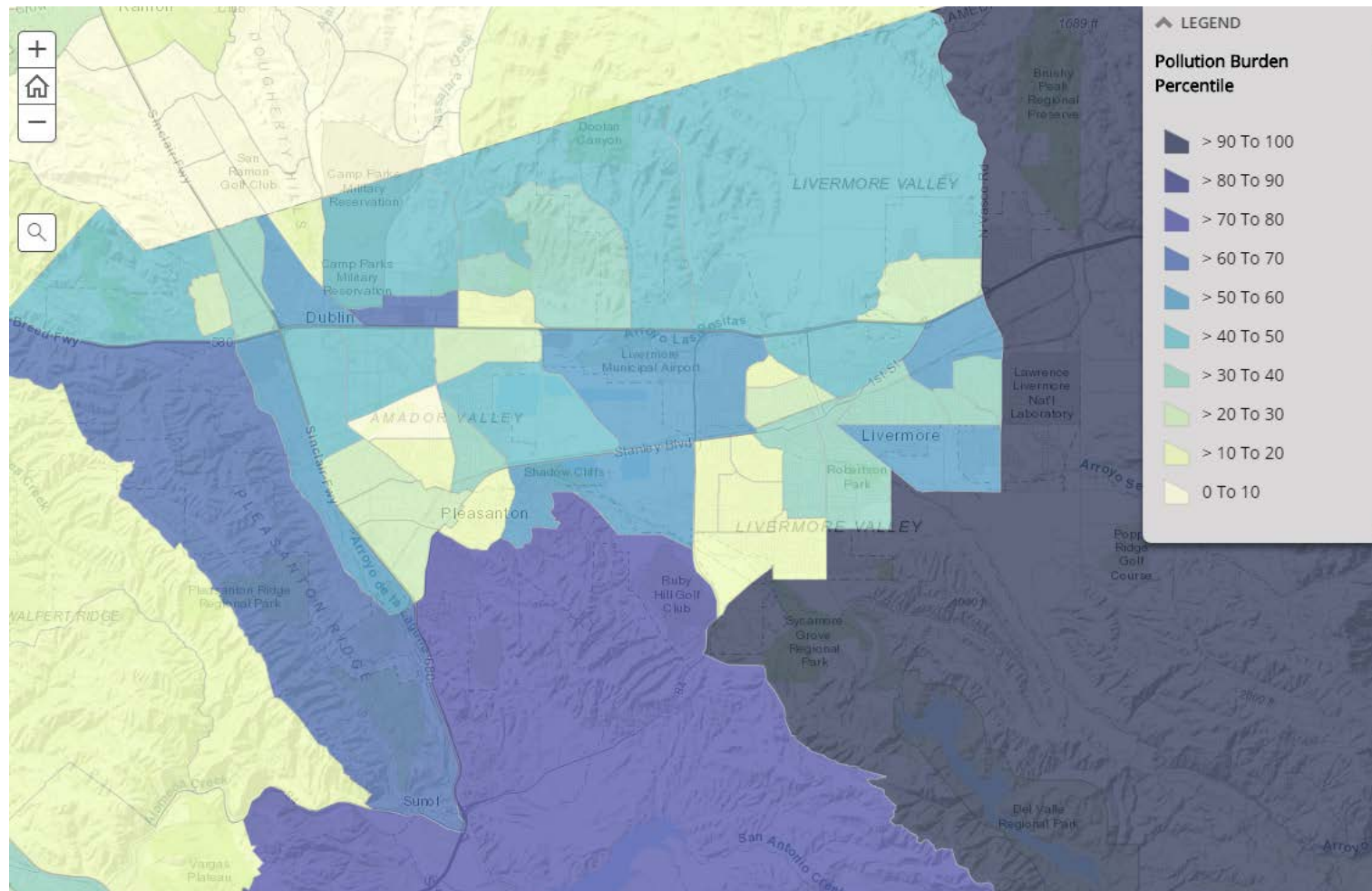
Diesel particulate matter emissions are reported to be especially high in parts of Dublin and Pleasanton.

Statewide Diesel PM Percentile



Especially high overall pollution burden is reported in far eastern parts of Livermore.

Statewide Pollution Burden Percentile

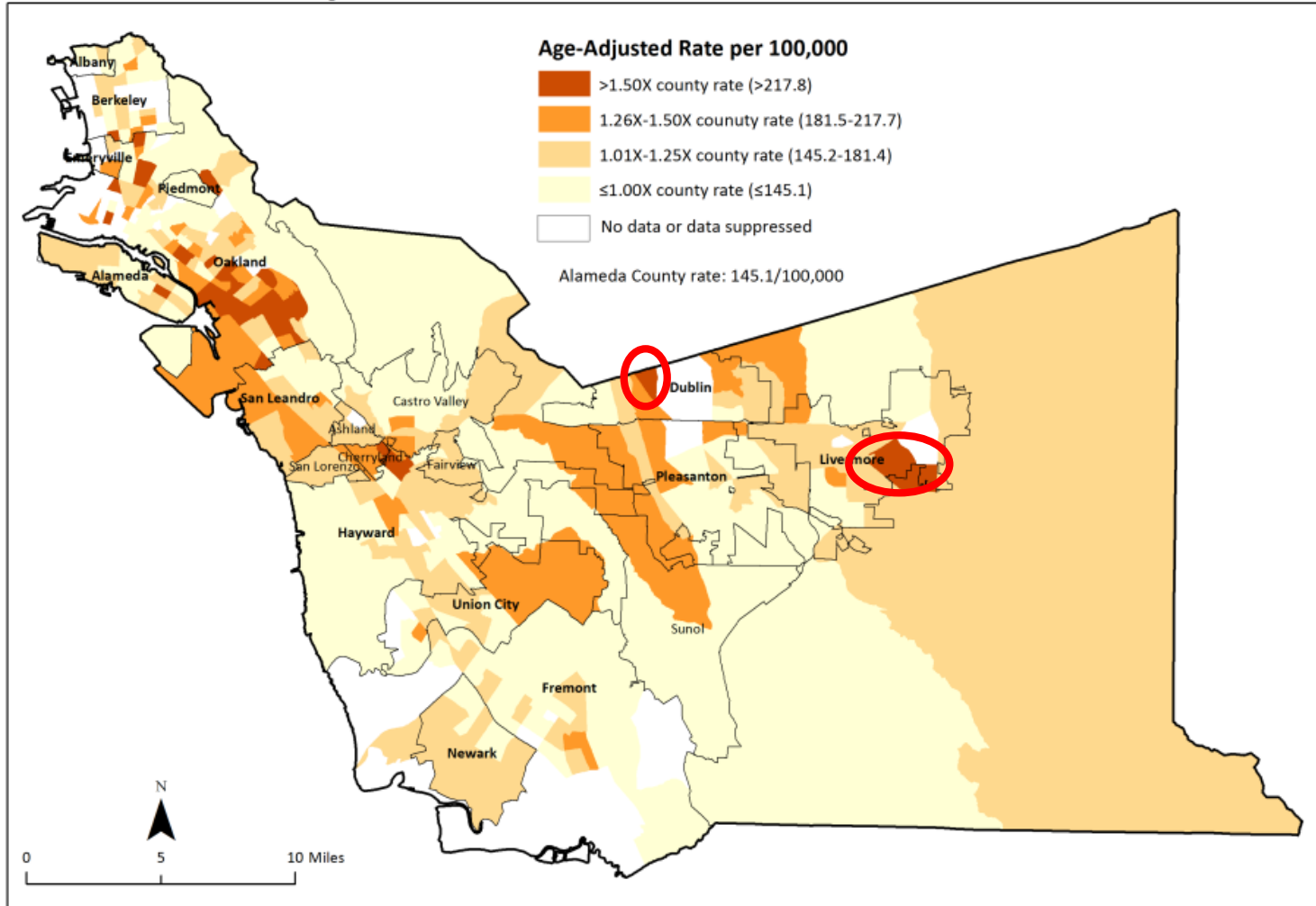


Cancer, heart disease, stroke and chronic lower respiratory disease are among top 5 leading causes of death in Tri-Valley.

	Leading Causes of Death in Tri-Valley	Percentage of all deaths
➔	Cancer	27%
➔	Heart Disease	19%
	Alzheimers Disease	7%
➔	Stroke	6%
➔	Chronic Lower Respiratory Disease	6%

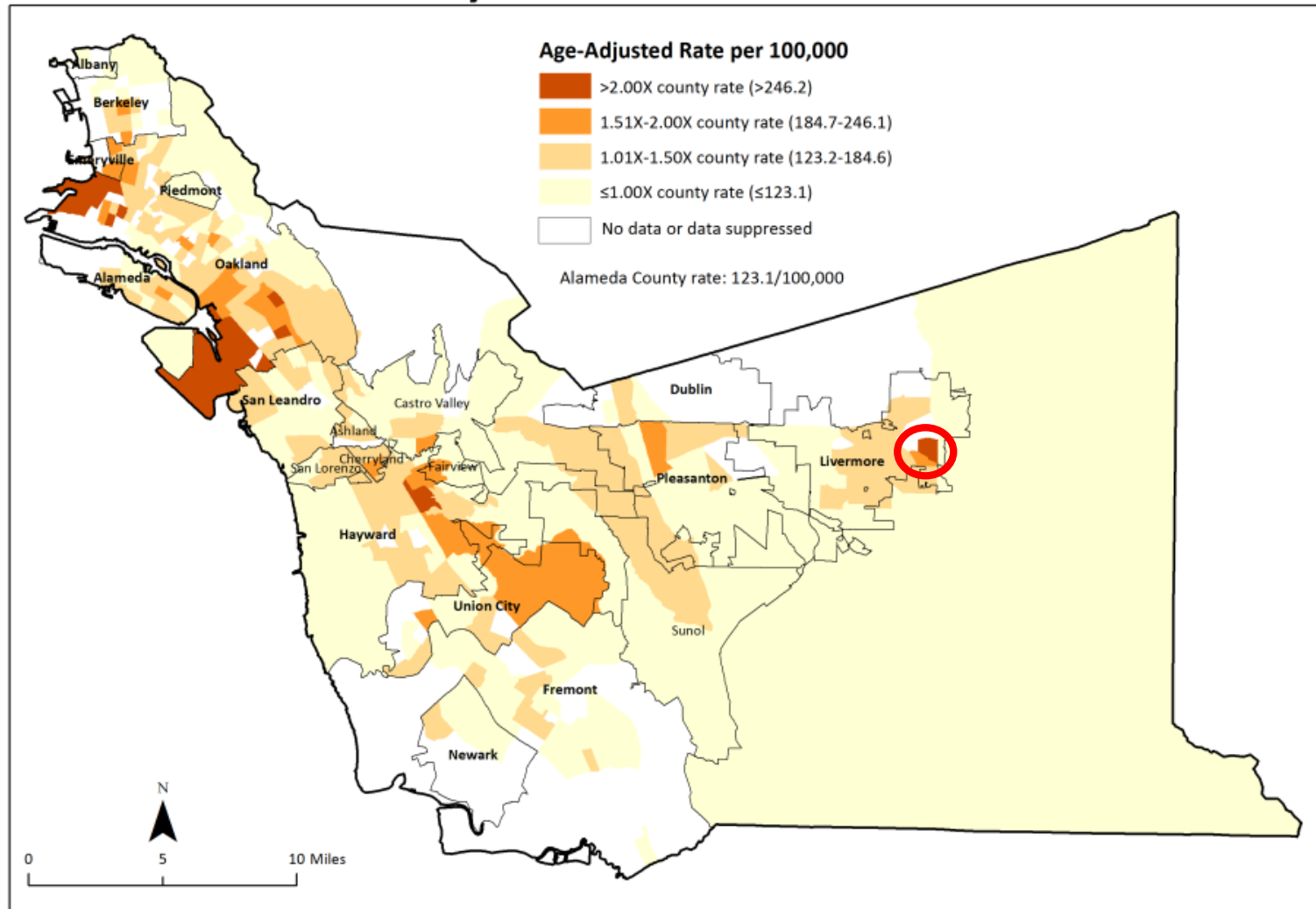
Cancer death rates are especially high in parts of Livermore and Dublin.

Cancer Mortality



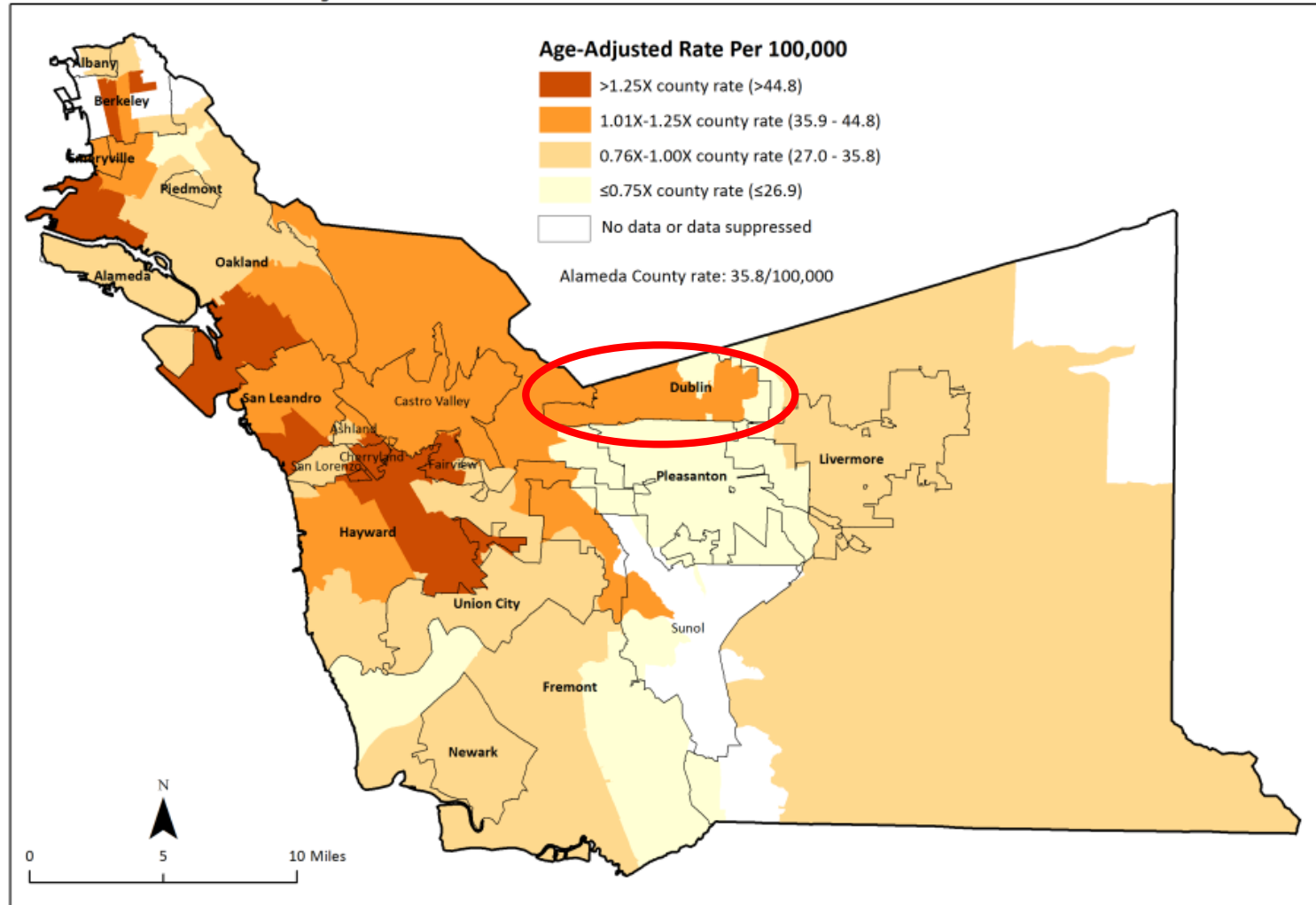
Heart disease death rates are notably high in part of Livermore.

Heart Disease Mortality



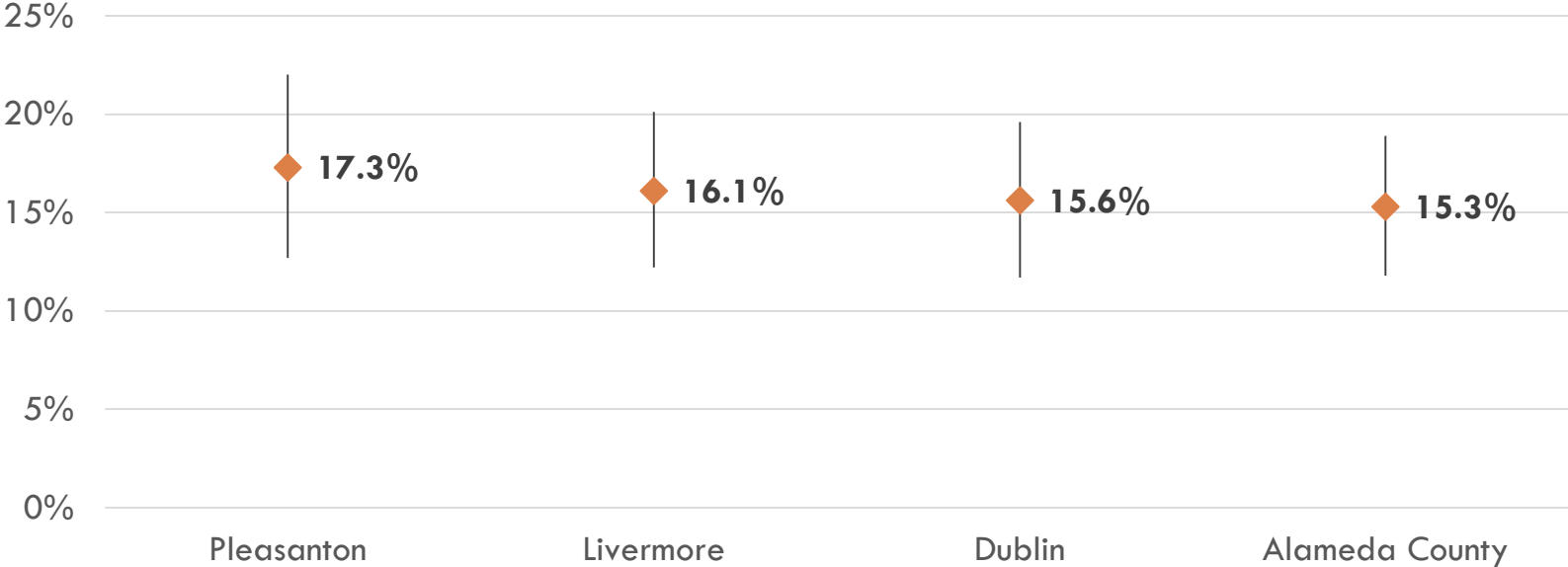
Within the Tri-Valley, stroke mortality is relatively high in Dublin.

Stroke Mortality



Reported adult asthma prevalence in Tri-Valley cities is higher than the county rate, but not significantly higher.

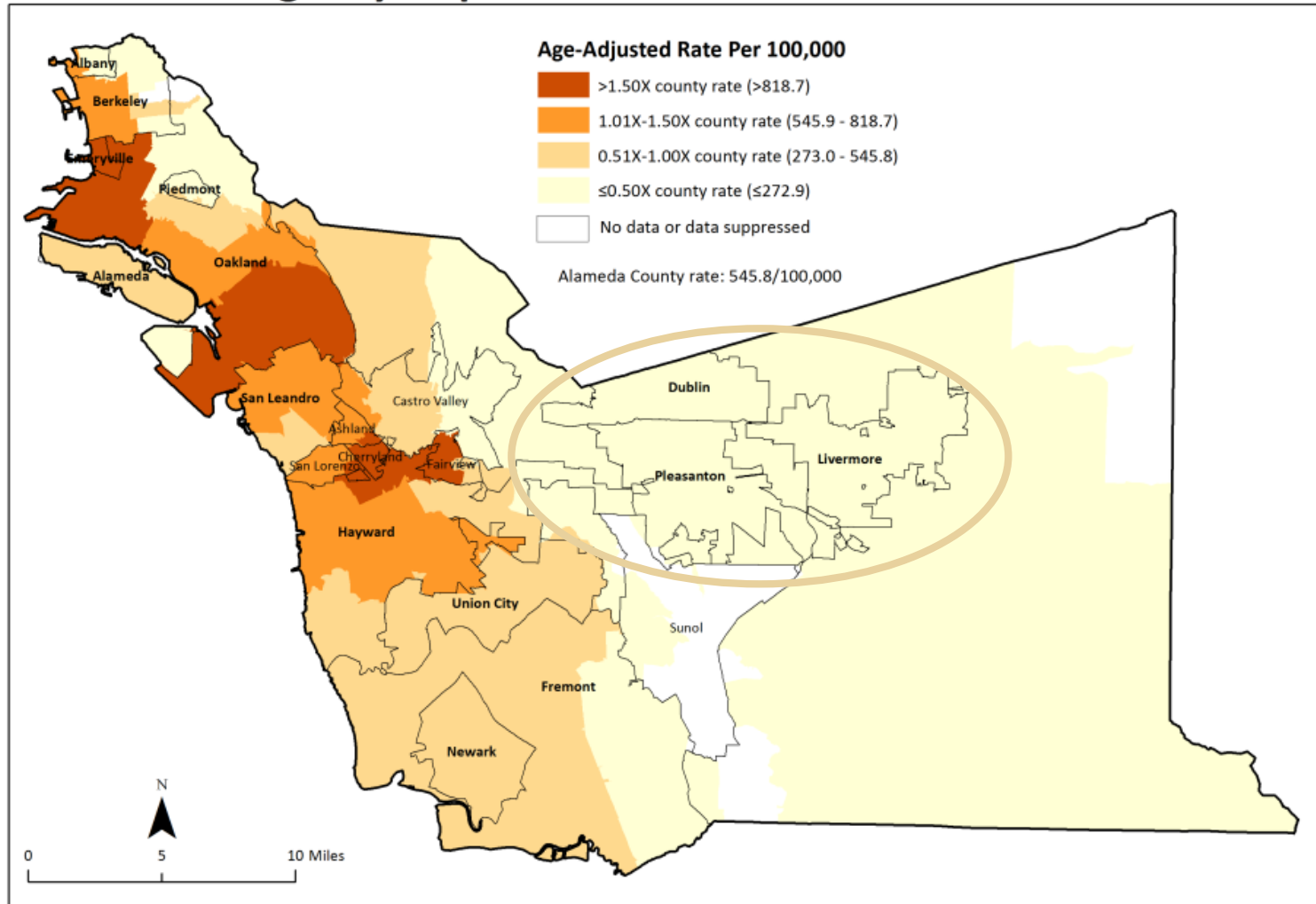
Percentage of Adults Ever Diagnosed with Asthma
with upper and lower bounds of 95% confidence interval



Source: CA Health Interview Survey, Neighborhood Edition, 2014

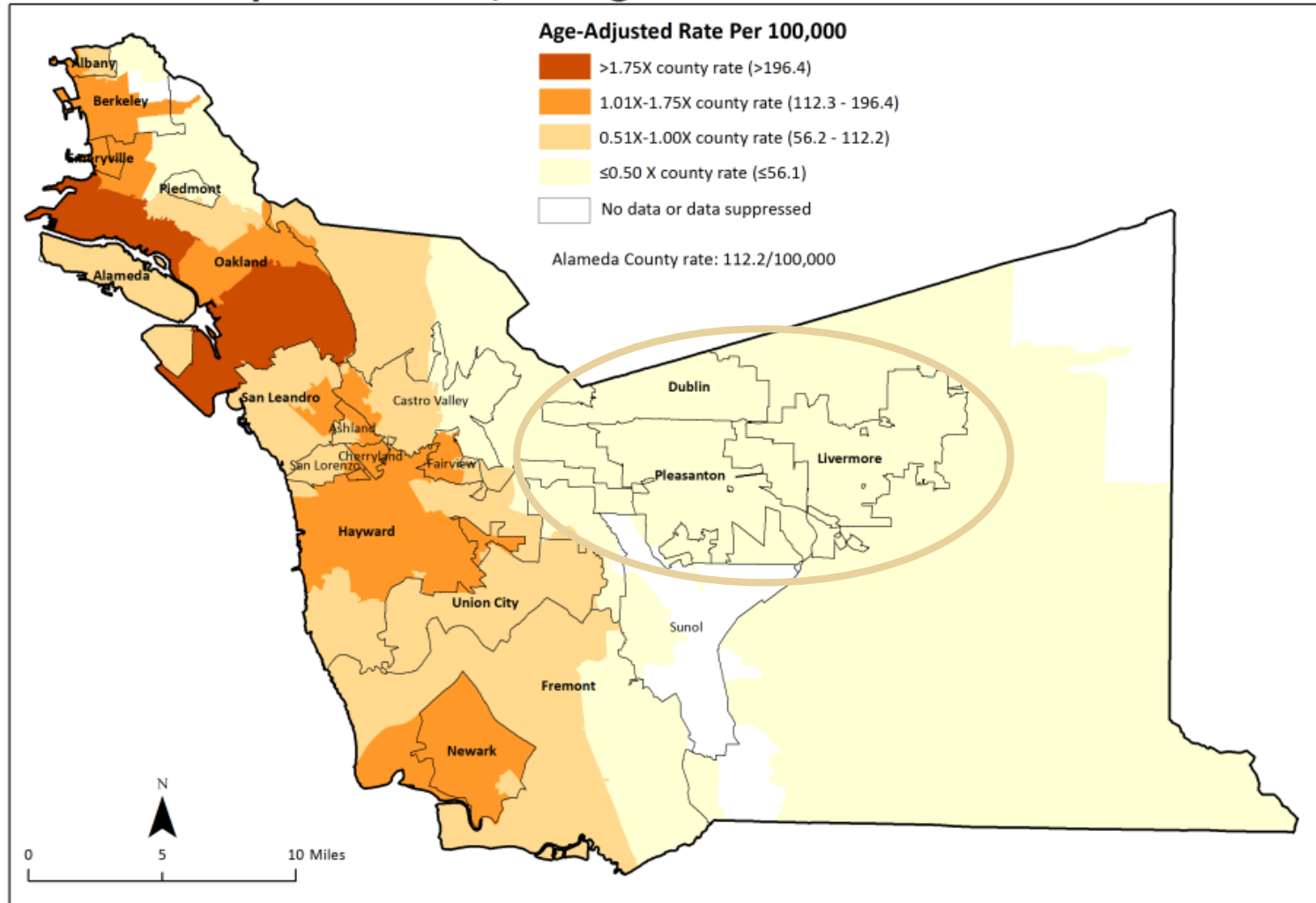
Rates of asthma emergency department visits are relatively low in the Tri-Valley.

Asthma Emergency Department Visits

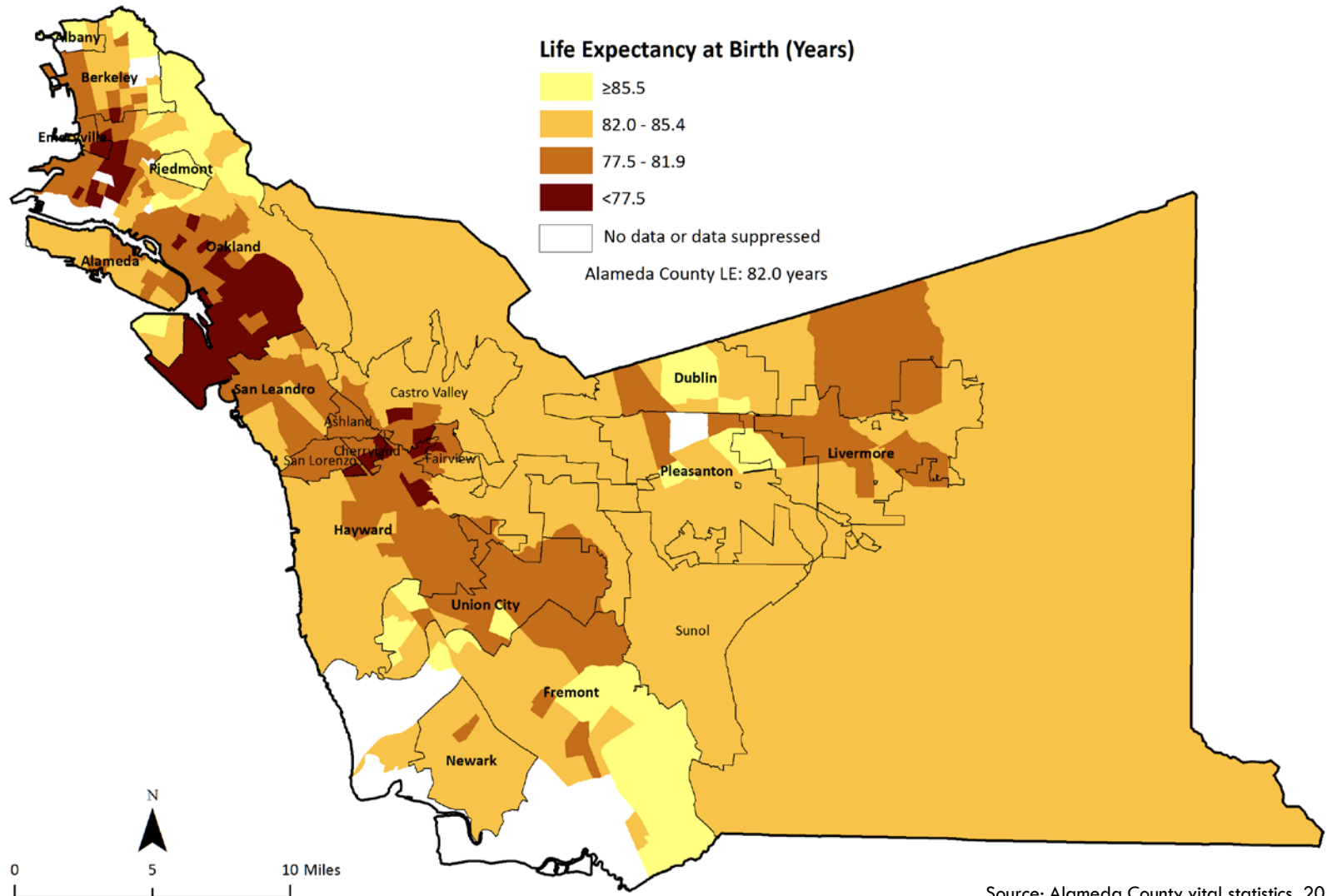


Asthma hospitalization rates are also relatively low.

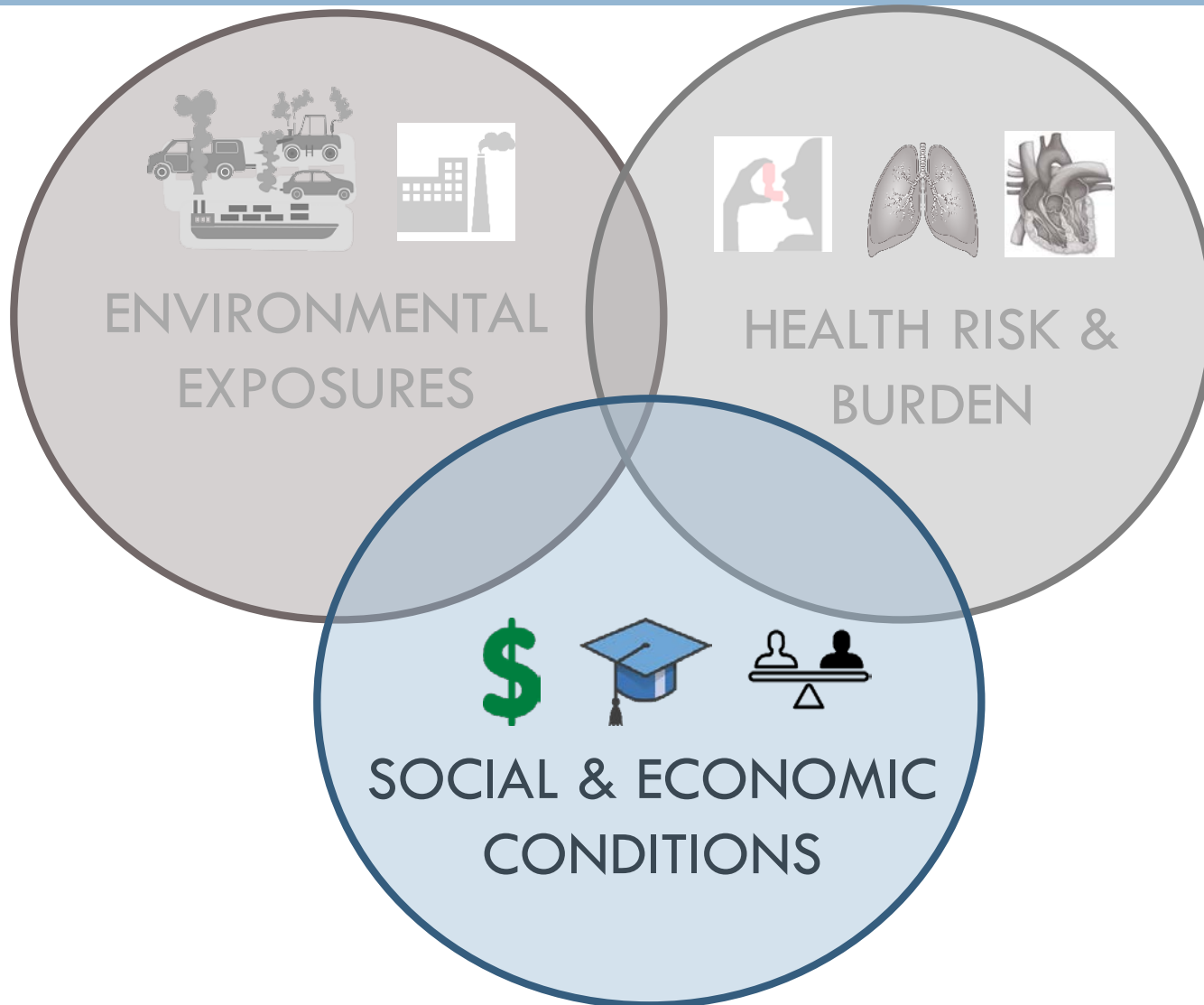
Asthma Hospitalizations, All Ages



Compared to other parts of the county, the Tri-Valley has relatively longer life expectancy.
But life expectancy within the region varies.

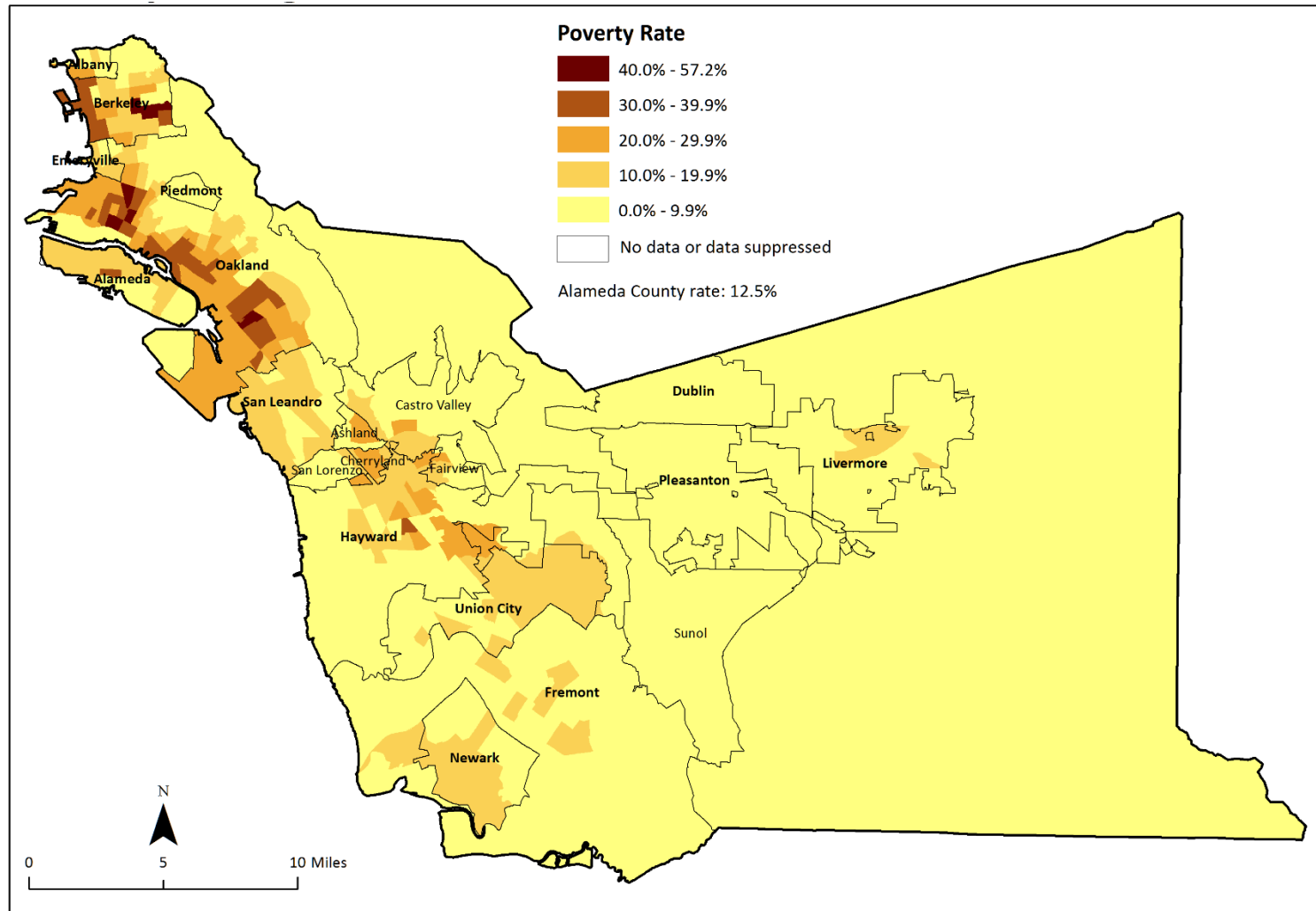


Social and economic conditions powerfully impact health.
Not all communities have the resources they need to be healthy.



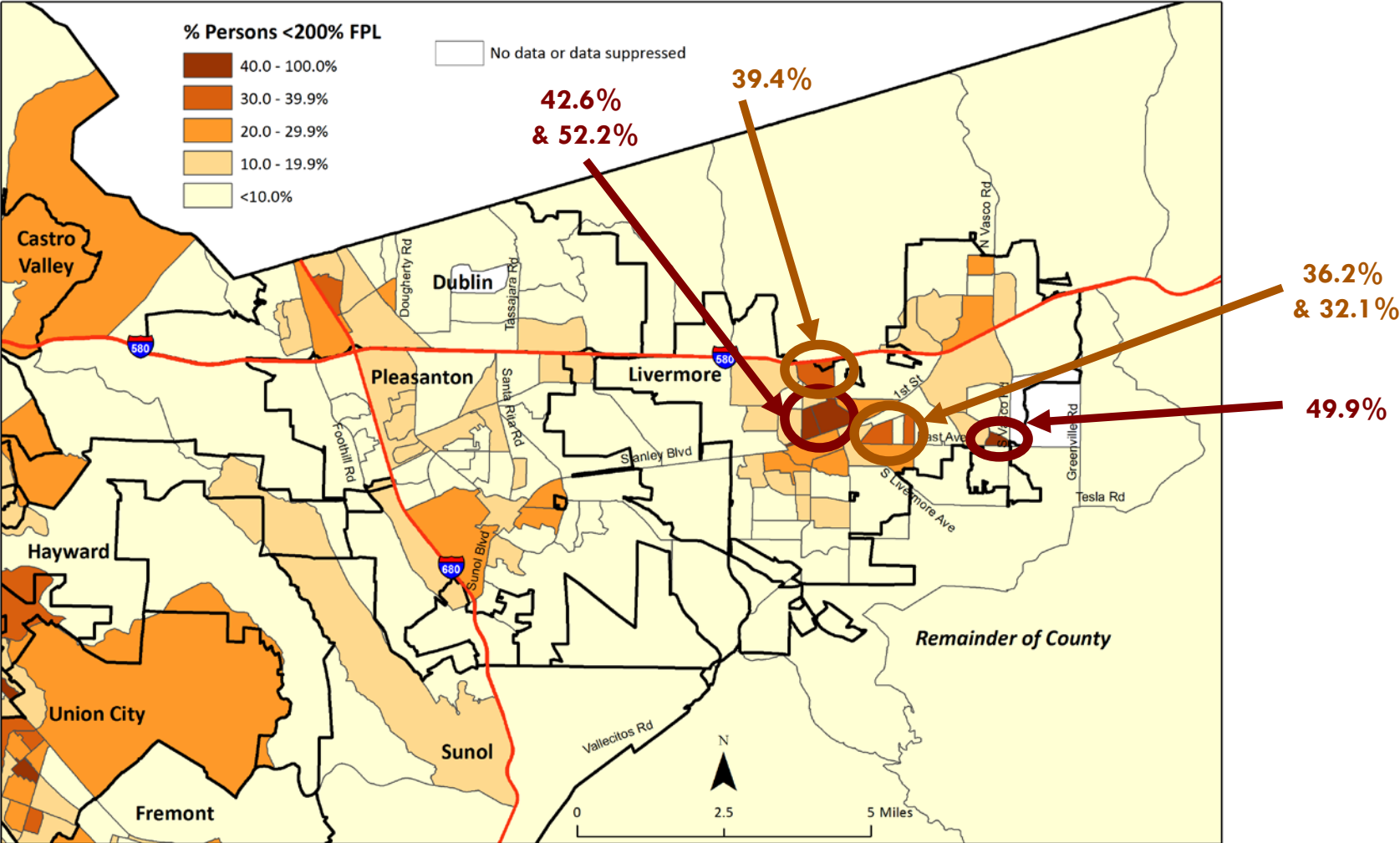
Overall levels of poverty in the Tri-Valley are relatively lower than seen county-wide.

Poverty Rate by Census Tract



There are some pocket areas of need within Livermore.

Percentage of Population under 200% of Federal Poverty Line



Source: CAPE, with data from American Community Survey 2016 5-year files.

AB 617 provides opportunities to reduce air pollution emissions and yield multiple health benefits in most impacted communities.



Thank you!

For questions or more info, please contact us:



Sandi Gálvez

Director, Health Equity, Policy, & Planning

sandi.galvez@acgov.org

Anna Lee

Local Policy Coordinator, Place Matters

anna.lee@acgov.org

Tammy Lee

Community Epidemiologist

tammy.lee@acgov.org