

# Improving Neighborhood Air Quality





1

Air Quality  
and Health

2

What is  
AB 617?

3

Select  
Communities  
for Action

4

Resources to  
Improve Air  
Quality



1  
Air Quality  
and Health

**Air  
Pollutants**



emission rates  
types of emissions



**Ambient  
Concentration**



types of pollutants  
topography  
wind patterns



**Exposure  
and Dose**



breathing rate  
location  
time



**Health  
Effects**



dose  
susceptibility

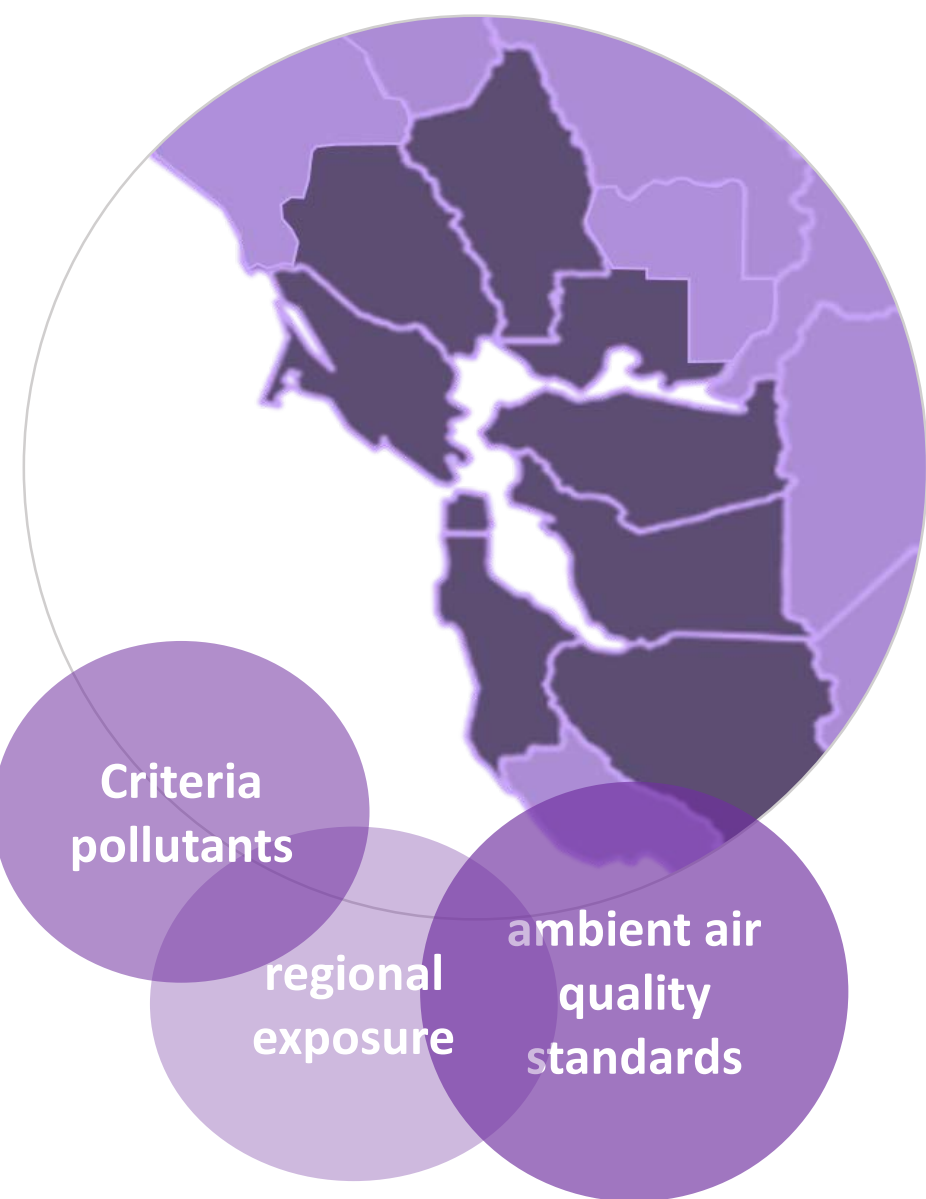


1

Air Quality and Health

# Community

## Regional



## Facility



2

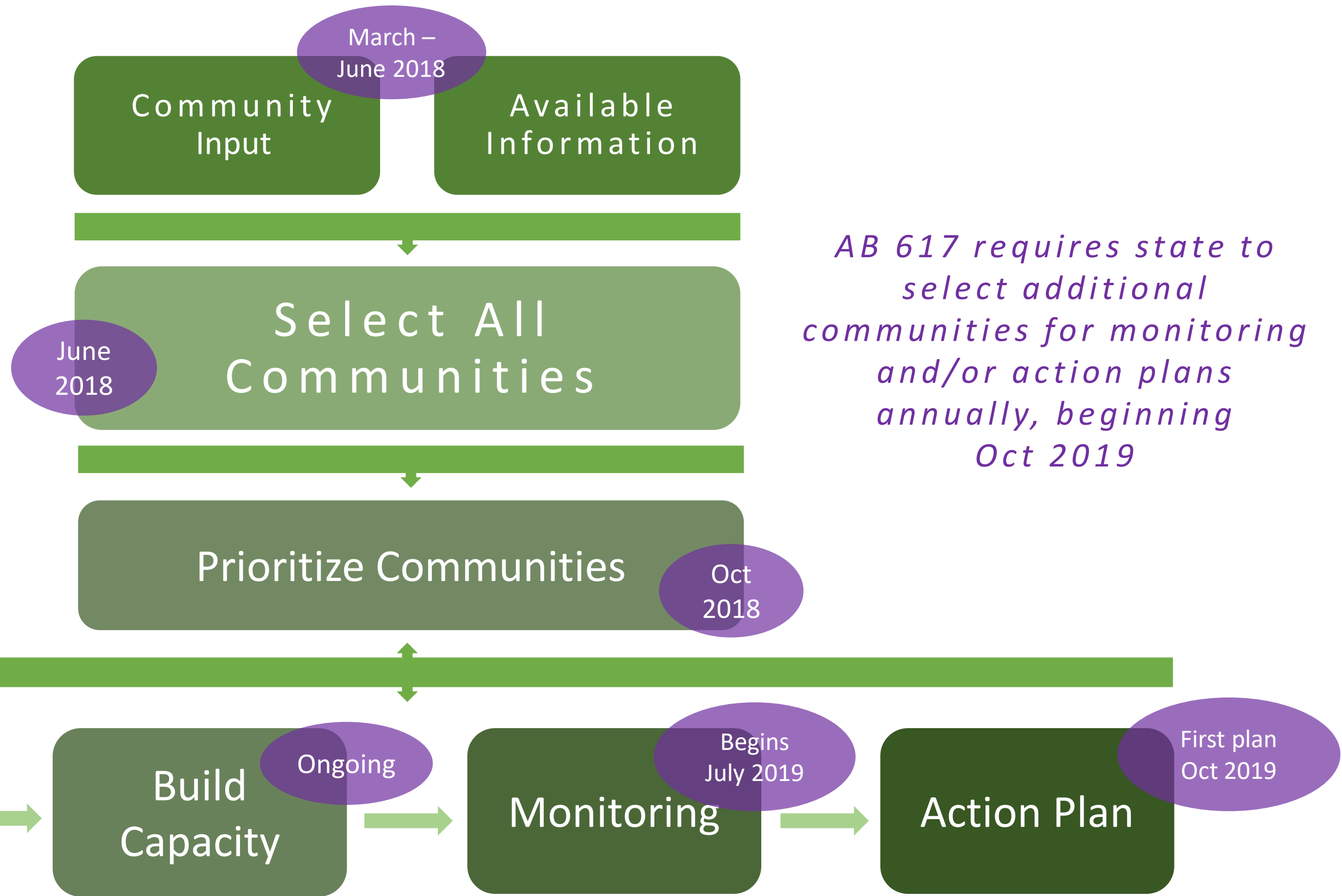
What is  
AB 617?

# Program Goals

- Community Participation
- Eliminate Air Quality Disparities
- Reduce Health Burdens
- Continuous Evaluation and Improvement



2  
What is AB 617?





3

Select  
Communities  
for Action

*Under AB 617, the state requires districts to work with communities to select all areas in the region that have a “**high cumulative exposure burden**” and then **prioritize** areas for community monitoring and/or actions plans over the next 6 years.*



3

Select  
Communities  
for Action

## Criteria Used to Select *All Areas* with High Air Pollution Impacts

### CARE

High pollutants

fine particles

toxics

ozone

Mortality

Cancer risk

ER visits and  
hospitalizations  
due to air  
pollution

### Health and Vulnerability

Life expectancy

Low birth weight

Diesel exhaust

Traffic

Socioeconomic factors

Education

Housing costs

Access to transportation

### Large Sources

Oil refineries

Cement plants

Chemical plants

Marine ports

Airports

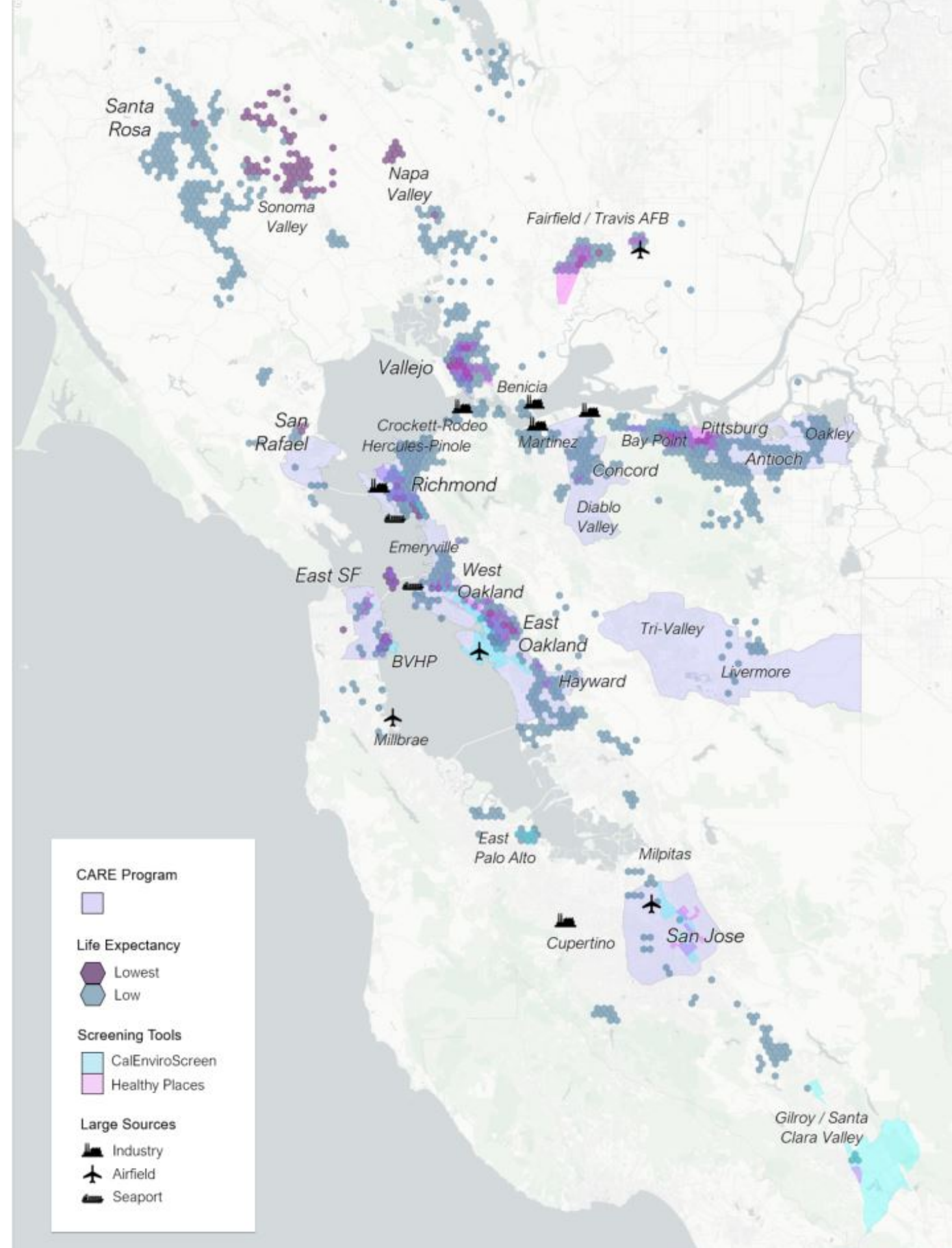


3

Select Communities for Action

# Recommendations

- CARE
- Areas with large sources
- Areas with health and pollution impacts
- Areas with low life expectancy



3

Select Communities for Action

Local View

Power plants

Organics recovery and waste facilities

Airport

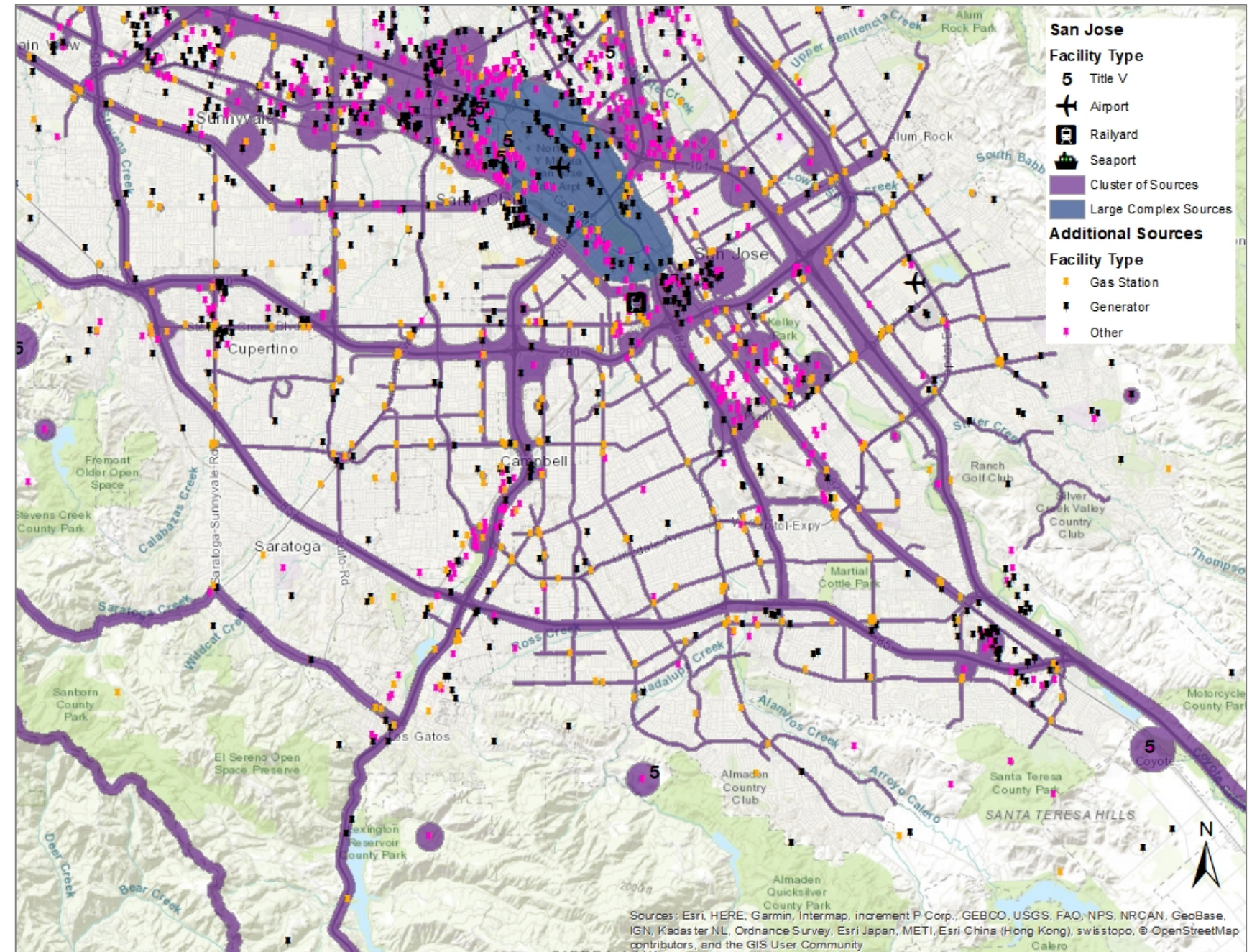
Quarries

Cement and asphalt plants

Organic liquids storage and distribution

Construction and agricultural equipment

Freeways, roadways and rail



3

Select Communities for Action

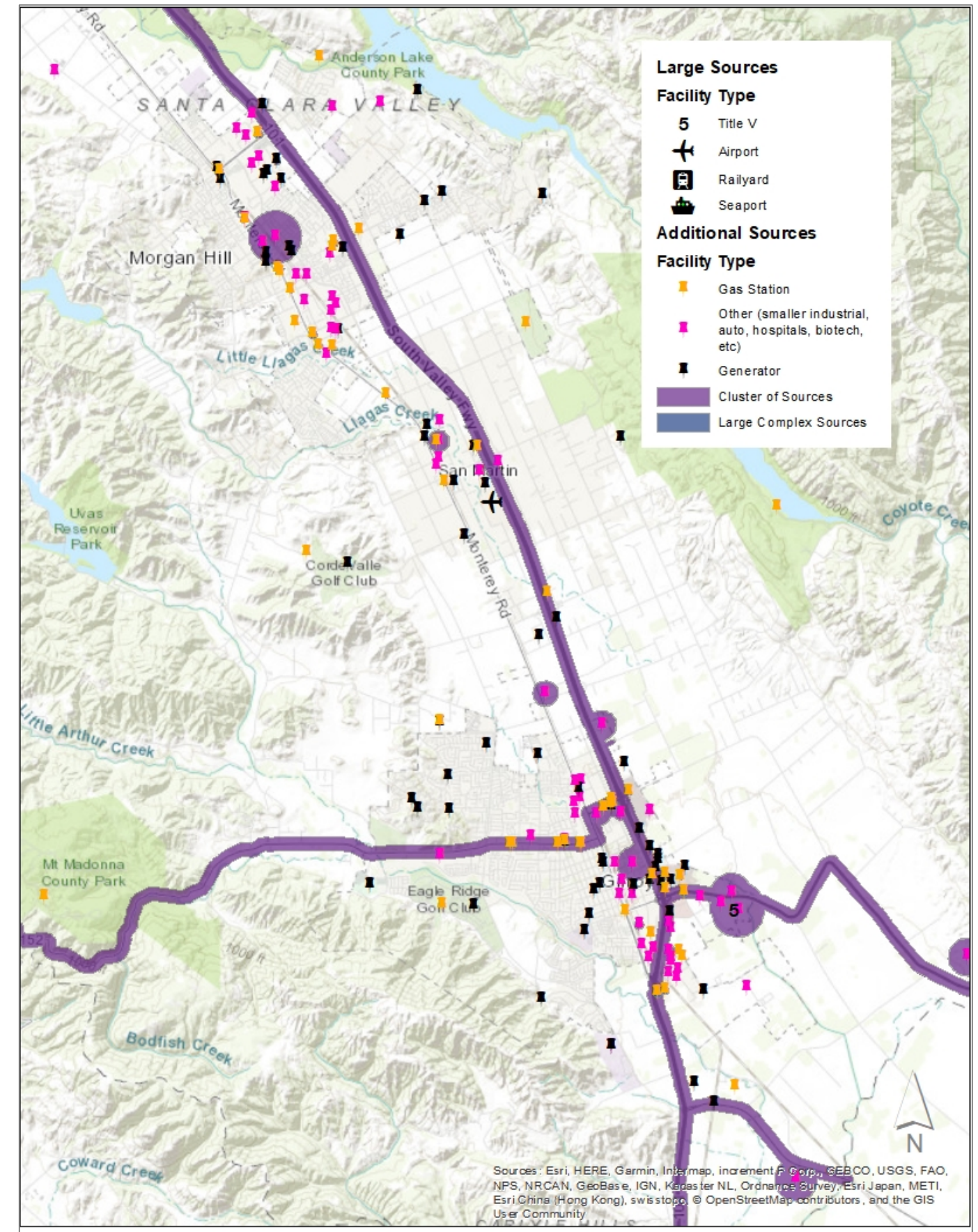
# Local View

Waste facilities

Power plant

Agriculture sources and equipment

Freeways and roadways



3

Select  
Communities  
for Action

## How should we select communities for action?

### Air Quality

Fine particles  
Toxics

### Health

Life expectancy  
Lung disease  
Heart disease

### Other Ideas

?

4

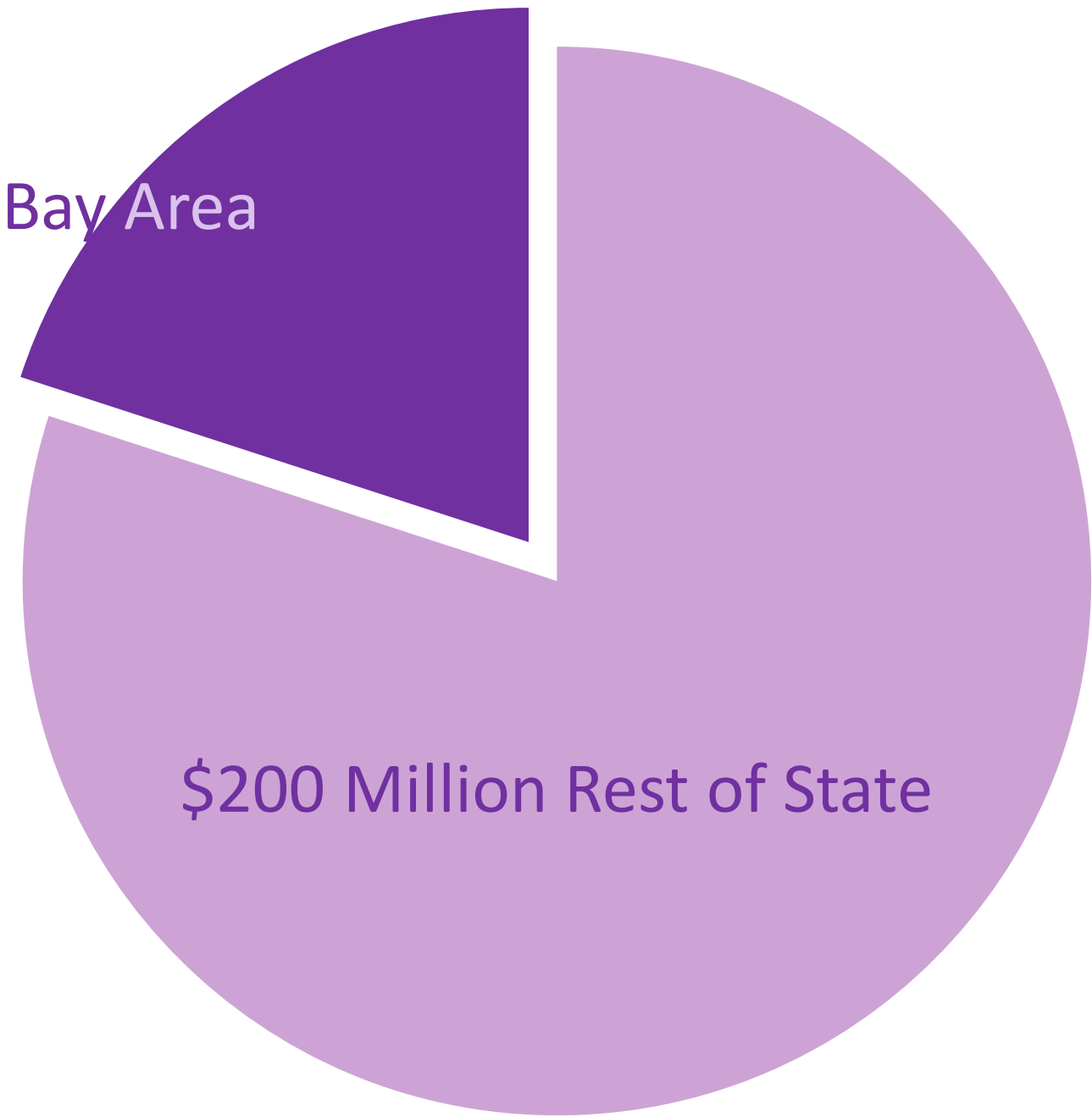
Resources  
to Improve  
Air Quality

# Clean Technology Grants

- Trucks
- Buses
- Locomotives
- Construction Equipment
- Agriculture Equipment

\$50 Million to Bay Area

\$200 Million Rest of State



*Where should future money focus?*



# Feedback

- Overall support for community selection
- Improve Air District permitting process
- Prevent increased air pollution in overburdened communities
- Provide grants to communities to do community outreach
- Challenge what is acceptable air pollution
- Be transparent, open, and accountable

The background of the slide is a light blue color with several large, white, semi-transparent question marks scattered across it. In the top-left corner, there is a small yellow speech bubble icon with three horizontal lines inside.

How should we prioritize areas for action?

What other pollution or exposure reduction projects should we fund?





How should we  
select communities for years 2-5?

Map it!  
Where should we focus?  
Where are sources of pollution?

# Interactive Stations

How concerned are you about the  
air pollution caused by  
various equipment types?

What does success  
look like?