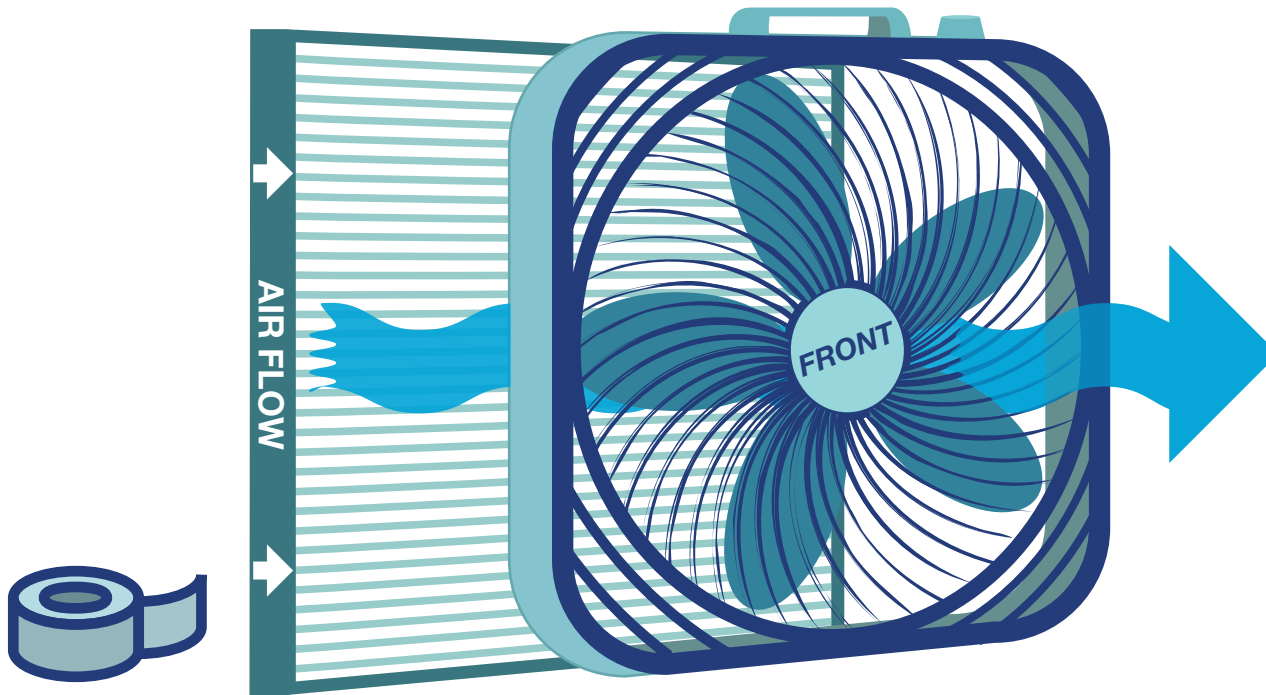


# DIY AIR CLEANER TO REDUCE WILDFIRE SMOKE INDOORS

## MATERIALS



- Duct tape
- 20"x20" air filter (MERV 13 rating)
- 20"x20" box fan (certified fan with UL or ETL marking, 2012 model or newer)

## ASSEMBLY

1. Check the filter for the direction of air flow, marked on side of filter.
2. Attach filter to back of box fan using duct tape to create a seal between fan and filter.
3. Run fan for 30 minutes to 1 hour to filter air in a standard size room. Do not run for too long or overnight, as this may cause overheating. Do not leave unattended.
4. Replace filters when dirty.

View the "How to Make an Emergency DIY Air Filter" video.  
<https://www.youtube.com/watch?v=XSNHdiEMGbA>